

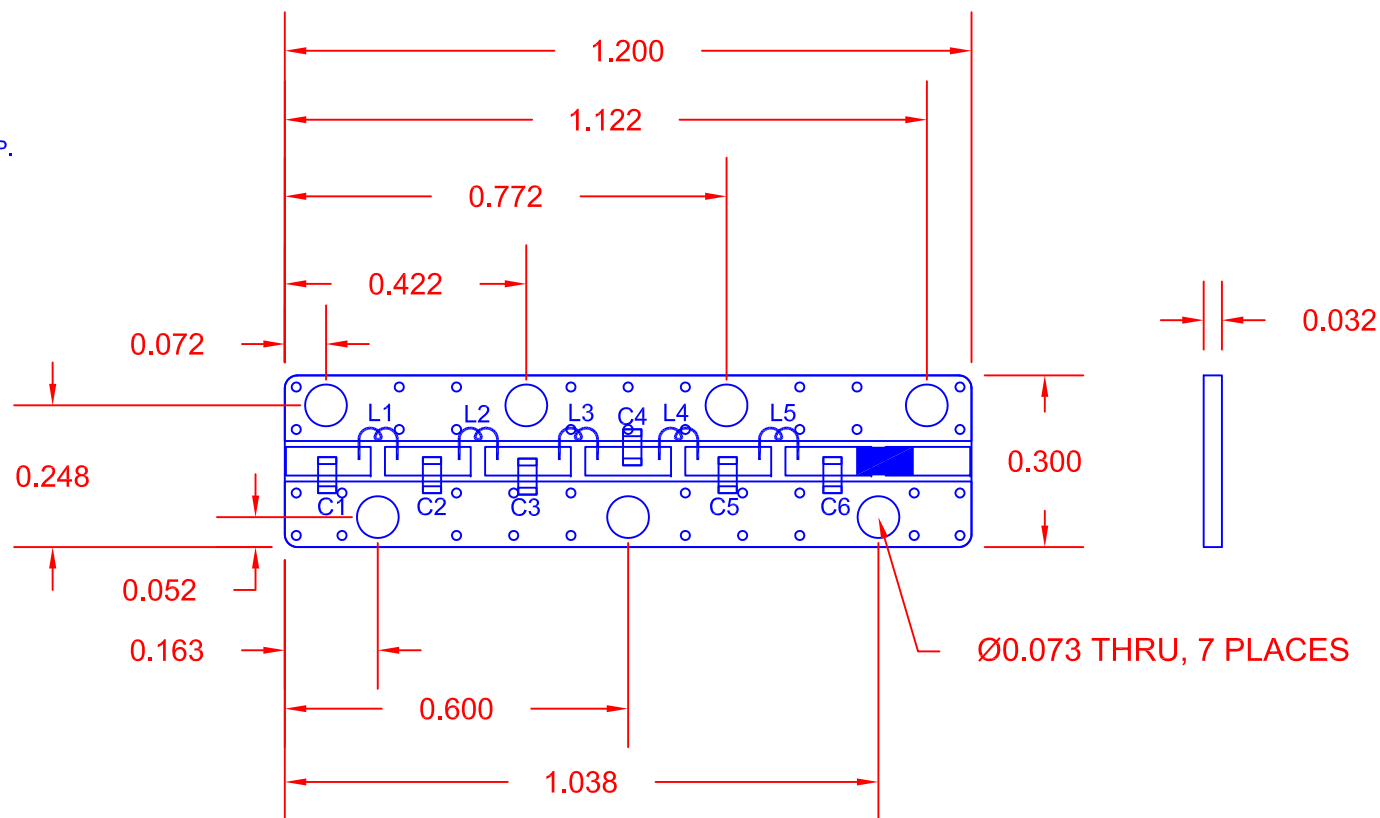
**DESCRIPTION:**

PMI model number LP3900M-SM-CD-MLL is a Lowpass filter. This filter offers very high Q with broadband performance and very low loss, and is ideal for eliminating broadband harmonics.

REVISIONS				
ZONE	REV.	DESCRIPTION	DATE	APPROVED
	A	ORIGINAL RELEASE	9/12/12	

**SPECIFICATIONS:**

- CUTOFF FREQUENCY: 3900 MHz
- VSWR IN THE PASS BAND: 1.5:1 TYP.
- INSERTION LOSS (PASSBAND): 2.25 dB TYP.
- REJECTION AT 6200 MHz: 60 dB TYP.
- REJECTION AT 8000 MHz: 65 dB TYP.
- REJECTION AT 12000 MHz: 65 dB TYP.
- BACKSIDE COPPER
- SIZE 1.200" (L) x 0.300" (W) x 0.032" (H)



**ENVIRONMENTAL RATINGS:**

- TEMPERATURE: -55°C TO +85°C (OPERATING)  
-65°C TO +125°C (STORAGE)

NOTE: THE ABOVE SPECIFICATIONS ARE SUBJECT TO CHANGE OR REVISION

ALL DIMENSIONS ARE IN INCHES  
TOLERANCES:  
X.XX ±0.020  
X.XXX ±0.005

**PLANAR MONOLITHICS INDUSTRIES, INC.**

7311-F GROVE ROAD  
FREDERICK, MARYLAND 21704 USA  
TEL: 301-662-5019 FAX: 301-662-1731  
WEBSITE: [www.pmi-rf.com](http://www.pmi-rf.com)  
E-MAIL: [sales@pmi-rf.com](mailto:sales@pmi-rf.com)  
ISO 9001:2008 CERTIFIED



APPROVALS		DATE	TITLE		
DRAWN <b>DPD</b>		3/12/12	OUTLINE DRAWING LP3900M-SM-CD-MLL		
CHECKED			SIZE A	FSCM NO. 05XQ0	DWG NO. 27016231
ISSUED			SCALE N:S		REV. A
					SHEET 1 OF 1