

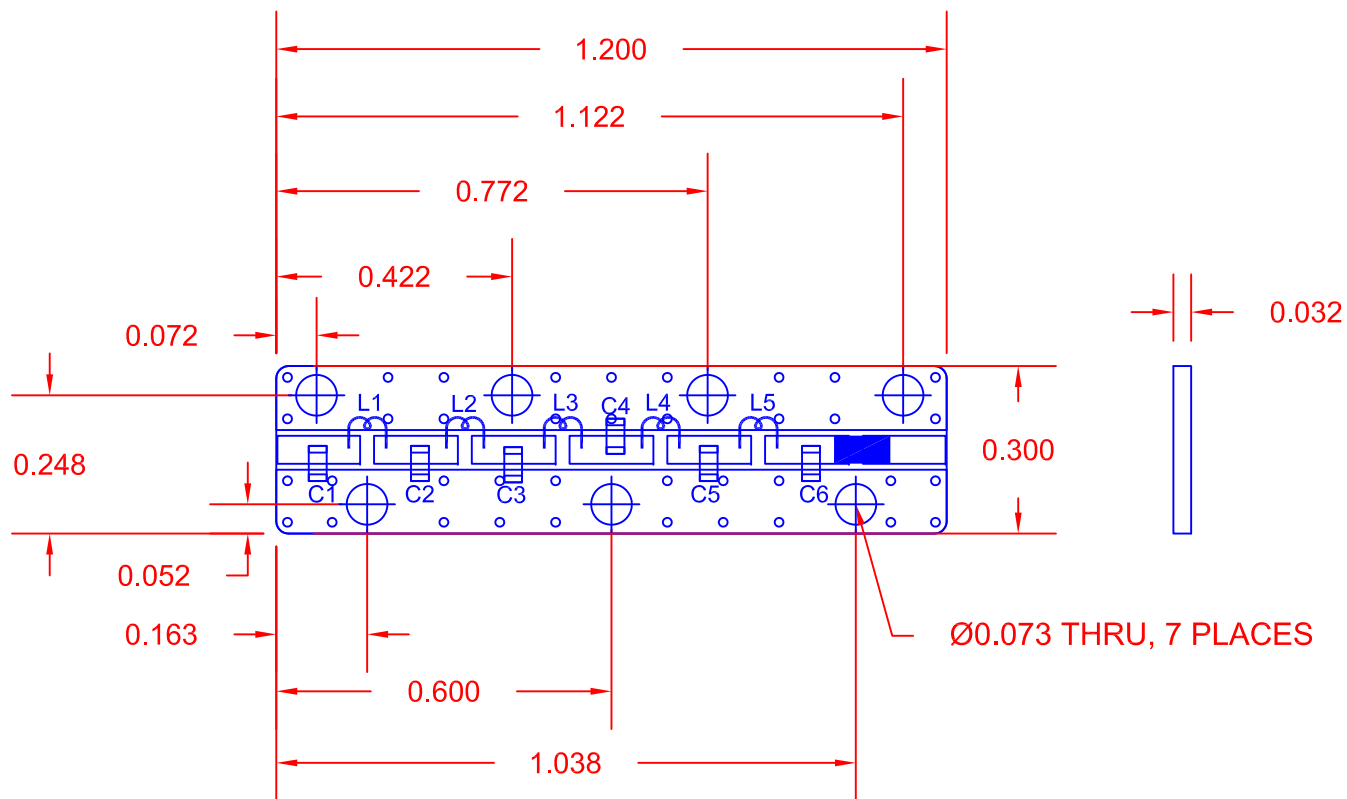
DESCRIPTION:

PMI model number LP4500M-SM-CD-MLL is a Lowpass filter. This filter offers very high Q with broadband performance and very low loss, and is ideal for eliminating broadband harmonics.

REVISIONS				
ZONE	REV.	DESCRIPTION	DATE	APPROVED
	A	ORIGINAL RELEASE	3/12/12	

SPECIFICATIONS:

- CUTOFF FREQUENCY: 4500 MHz
- VSWR IN THE PASS BAND: 1.5:1 TYP.
- INSERTION LOSS (PASSBAND): 2.25 dB TYP.
- REJECTION AT 7400 MHz: 60 dB TYP.
- REJECTION AT 8000 MHz: 65 dB TYP.
- REJECTION AT 12000 MHz: 65 dB TYP.
- BACKSIDE COPPER
- SIZE: 1.200" (L) x 0.300" (W) x 0.032" (H)



ENVIRONMENTAL RATINGS:

- TEMPERATURE: -55°C TO +85°C (OPERATING)
..... -65°C TO +125°C (STORAGE)

NOTE: THE ABOVE SPECIFICATIONS ARE SUBJECT TO CHANGE OR REVISION

ALL DIMENSIONS ARE IN INCHES
TOLERANCES:
X.XX ±0.020
X.XXX ±0.005

PLANAR MONOLITHICS INDUSTRIES, INC.

7311-F GROVE ROAD
FREDERICK, MARYLAND 21704 USA
TEL: 301-662-5019 FAX: 301-662-1731
WEBSITE: www.pmi-rf.com
E-MAIL: sales@pmi-rf.com
ISO 9001:2008 CERTIFIED



APPROVALS		DATE	TITLE		
DRAWN DPD		3/12/12	OUTLINE DRAWING LP4500M-SM-CD-MLL		
CHECKED			SIZE A	FSCM NO. 05XQ0	DWG NO. 27016236
ISSUED			SCALE N:S		REV. A
					SHEET 1 OF 1