

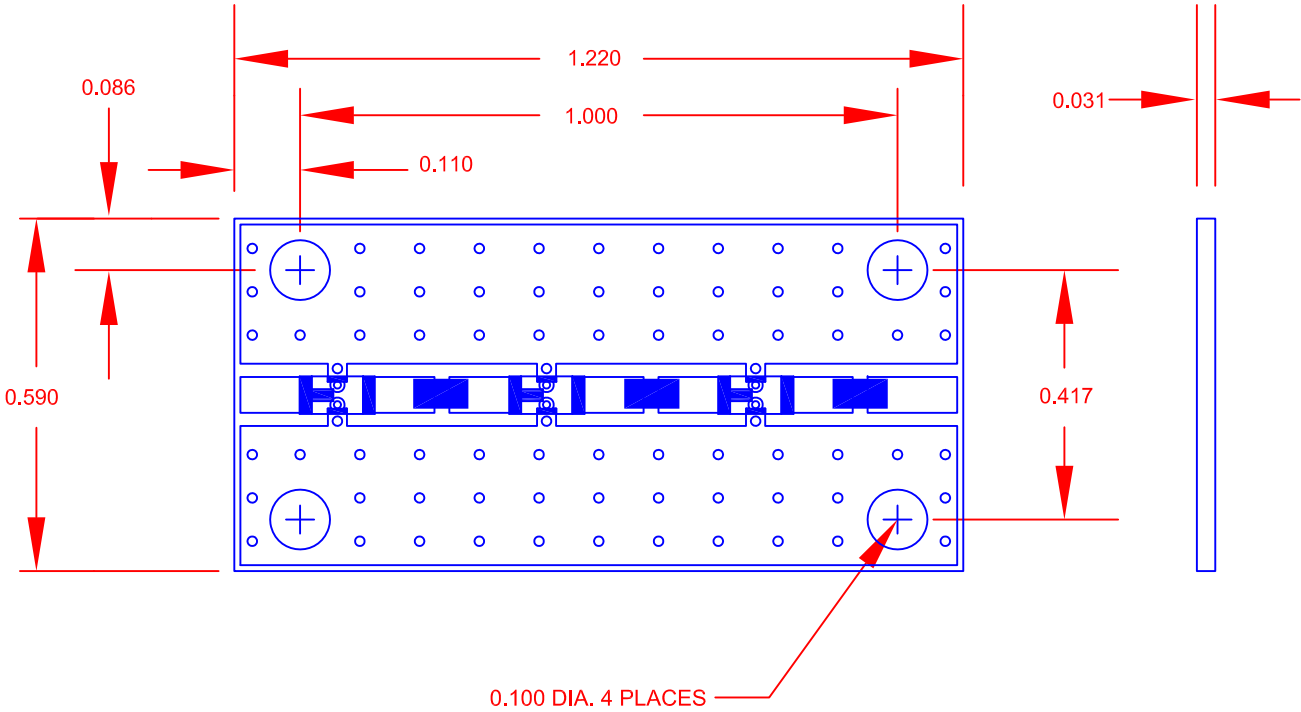
REVISIONS				
ZONE	REV.	DESCRIPTION	DATE	APPROVED
	A	ORIGINAL RELEASE	8/26/11	

DESCRIPTION:

PMI model number LP6200M-CD-MLL is a Lowpass filter.
This filter offers very high Q with broadband performance
and very low loss, and is ideal for eliminating broadband harmonics.

SPECIFICATIONS:

- CUTOFF FREQUENCY: 6200 MHz
- VSWR IN THE PASS BAND: 1.5:1 TYP.
- INSERTION LOSS (PASSBAND): 2.25 dB TYP.
- REJECTION AT 7500 MHz: 60 dB TYP.
- REJECTION AT 10000 MHz: 65 dB TYP.
- REJECTION AT 12000 MHz: 65 dB TYP.
- BACKSIDE COPPER
- SIZE 1.220" (L) x 0.590" (W) x 0.031" (H)




ENVIRONMENTAL RATINGS:

- TEMPERATURE: -55°C TO +85°C (OPERATING)
-65°C TO +125°C (STORAGE)

NOTE: THE ABOVE SPECIFICATIONS ARE SUBJECT TO CHANGE OR REVISION

ALL DIMENSIONS ARE IN INCHES
TOLERANCES:
X.XX ±0.010
X.XXX ±0.005

PART NO.		 PLANAR MONOLITHICS INDUSTRIES 5715 INDUSTRY LANE UNIT 11 FREDERICK, MARYLAND		
APPROVALS	DATE	TITLE		
DRAWN	NJA	8/26/11		
CHECKED		OUTLINE DRAWING LP6200M-CD-MLL		
ISSUED		SIZE	FSCM NO.	DWG NO.
		A	05XQ0	27014561
		SCALE	N/A	SHEET 1 OF 1
				REV. A