

**DESCRIPTION:**

PMI MODEL P16T-100M20G-100-T-RS422-DEC IS A SINGLE POLE 16 THROW SOLID STATE ABSORPTIVE SWITCH OPERATING OVER THE 100 MHz TO 20 GHz FREQUENCY RANGE. THIS MODEL OFFERS AN INSERTION LOSS OF 8.5 dB WHILE MAINTAINING AN ISOLATION OF 70 dB.

**SPECIFICATIONS:**

- FREQUENCY RANGE:..... 0.1 TO 20 GHz
- INSERTION LOSS:..... 8.5 dB MAX
- VSWR (IN/OUT):..... 2.5:1 MAX
- VSWR (OFF):..... 2.5:1 MAX
- ISOLATION:..... 70 dB MIN, 0.1-1 GHz  
80 dB MIN, 1-20 GHz
- INPUT POWER:..... 20 dBm CW Max
- SWITCHING SPEED:..... 100 ns MAX
- DC VOLTAGE :..... 5 V @ 1100 mA  
-12 V @ 720 mA
- CONTROL:..... RS-422/485 LOGIC SEE LOGIC TABLE
- CONNECTORS:..... SMA FEMALE
- FINISH:..... PAINTED BLUE/ CONFORMAL COATED  
MOUNTING SURFACE GOLD PLATED
- SIZE:..... 8.00" X 3.00" X 0.67"
- WEIGHT:..... 2 LBS

J18			
PIN	FUNCTION	PIN	FUNCTION
1	CTRL 1+	9	N/C
2	CTRL 1-	10	+5 VDC
3	CTRL 2+	11	GND
4	CTRL 2-	12	GND
5	CTRL 3+	13	-12 VDC
6	CTRL 3-	14	N/C
7	CTRL 4+	15	N/C
8	CTRL 4-		

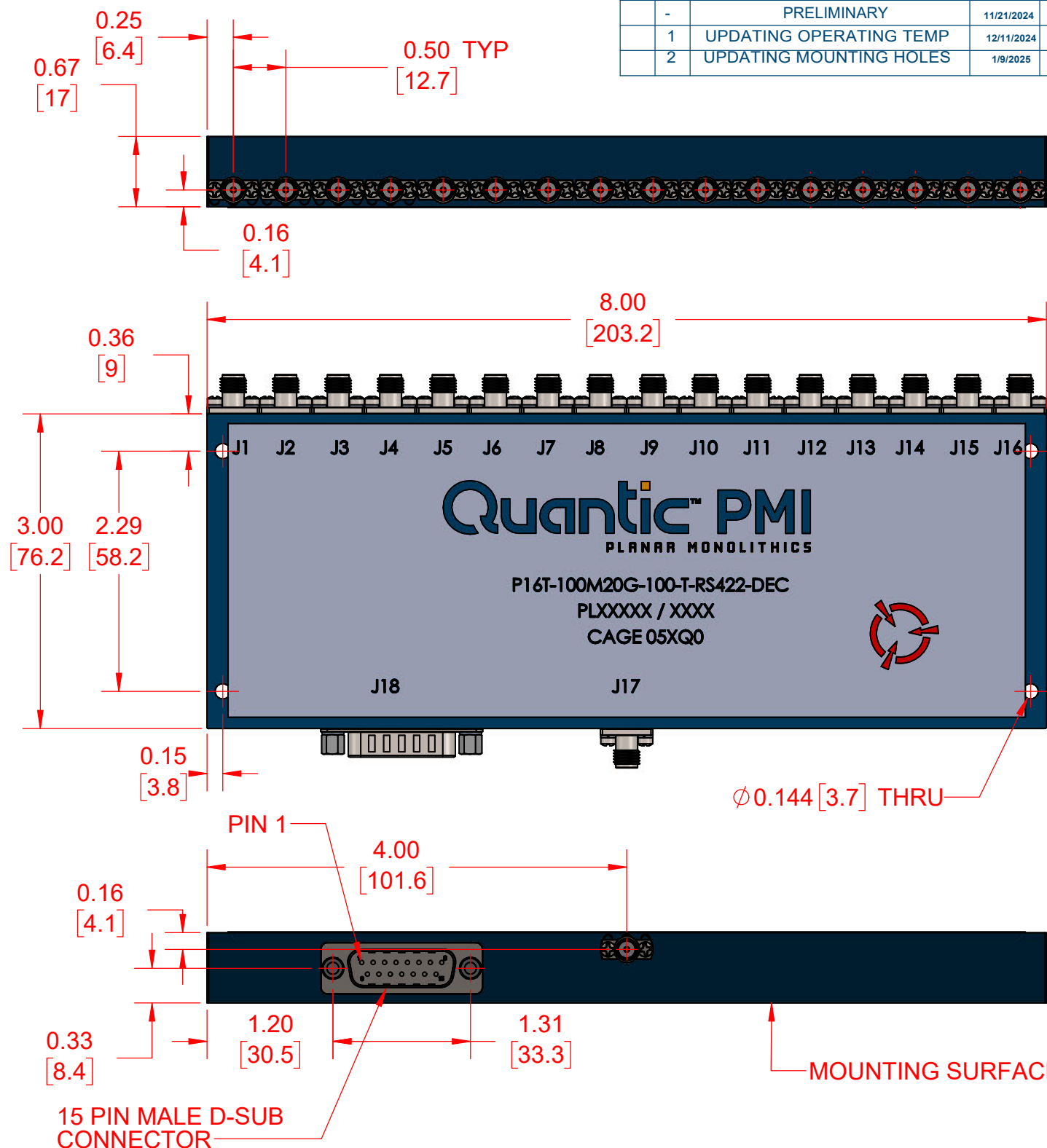
LOGIC TABLE				
C1	C2	C3	C4	CONNECTOR
C1<C1-	C2<C2-	C3<C3-	C4<C4-	J1
C1<C1-	C2<C2-	C3<C3-	C4>C4-	J2
C1<C1-	C2<C2-	C3>C3-	C4<C4-	J3
C1<C1-	C2>C2-	C3>C3-	C4>C4-	J4
C1+<C1-	C2+<C2-	C3+<C3-	C4+<C4-	J5
C1+<C1-	C2+<C2-	C3+<C3-	C4+>C4-	J6
C1+<C1-	C2+>C2-	C3+>C3-	C4+<C4-	J7
C1+<C1-	C2+>C2-	C3+>C3-	C4+>C4-	J8
C1+>C1-	C2+<C2-	C3+<C3-	C4+<C4-	J9
C1+>C1-	C2+<C2-	C3+<C3-	C4+>C4-	J10
C1+>C1-	C2+>C2-	C3+>C3-	C4+<C4-	J11
C1+>C1-	C2+>C2-	C3+>C3-	C4+>C4-	J12
C1+>C1-	C2+>C2-	C3+<C3-	C4+<C4-	J13
C1+>C1-	C2+>C2-	C3+<C3-	C4+>C4-	J14
C1+>C1-	C2+>C2-	C3+>C3-	C4+<C4-	J15
C1+>C1-	C2+>C2-	C3+>C3-	C4+>C4-	J16

**ENVIRONMENTAL RATINGS:**

- TEMPERATURE:..... -54°C TO +85°C (OPERATING)  
-65°C TO +125°C (STORAGE)
- HUMIDITY:..... MIL-STD-202, METHOD 103B COND. B
- SHOCK:..... MIL-STD-202, METHOD 213B COND. B
- VIBRATION:..... MIL-STD-202, METHOD 204D COND. B
- ALTITUDE:..... MIL-STD-202, METHOD 105C COND. B
- TEMPERATURE CYCLE:..... MIL-STD-202, METHOD 107 COND. A

NOTE: SPECIFICATIONS WILL VARY OVER TEMPERATURE  
NOTE: THE ABOVE SPECIFICATIONS ARE SUBJECT TO CHANGE OR REVISION

ZONE	REV.	DESCRIPTION	DATE	APPROVED
	-	PRELIMINARY	11/21/2024	
	1	UPDATING OPERATING TEMP	12/11/2024	
	2	UPDATING MOUNTING HOLES	1/9/2025	



**PMI CONFIDENTIAL AND PROPRIETARY**

UNLESS OTHERWISE SPECIFIED DIMENSIONS ARE IN INCHES TOLERANCES ARE:		PART NO.		 7309-A GROVE ROAD FREDERICK MARYLAND 21704 USA TEL: (301) 862-5019, FAX: (301) 652-1731 WEB: WWW.QUANTICPMI.COM, EMAIL: SALES@QUANTICPMI.COM ISO 9001 CERTIFIED	
FRACTIONS ±	DECIMALS .XX ± 0.010 .XXX ± 0.005	ANGLES ±			
MATERIAL:		APPROVALS	DATE	TITLE	
FINISH:		DRAWN	11/21/2024	OUTLINE	
NEXT ASSY		REDRAWN		P16T-100M20G-100-T-RS422-DEC	
USED ON		ISSUED		SIZE	FSCM NO.
APPLICATION				B	05XQ0
				DWG NO.	REV.
				PRELIMINARY	2
				SCALE 1:1	SHEET 1 OF 1