

**DESCRIPTION:**

THE MODEL P1T-200M18G-80-T-SFF-RL-PTB IS A PORTABLE HIGH SPEED, SINGLE POLE, SINGLE THROW, ABSORPTIVE SWITCH CAPABLE OF SWITCHING WITHIN 30ns. THE FREQUENCY RANGE IS 0.2 TO 18.0 GHz AND THIS SWITCH HAS OVER 80dB OF ISOLATION. THIS SWITCH FEATURES AN ON/OFF SWITCH THAT IS LOCATED ON THE FRONT PANEL. THIS UNIT OPERATES ON 220 to 230 VAC AND IS SUPPLIED WITH A 6 FOOT STANDARD EU 2-PRONG STYLE POWER CORD.

**SPECIFICATIONS:**

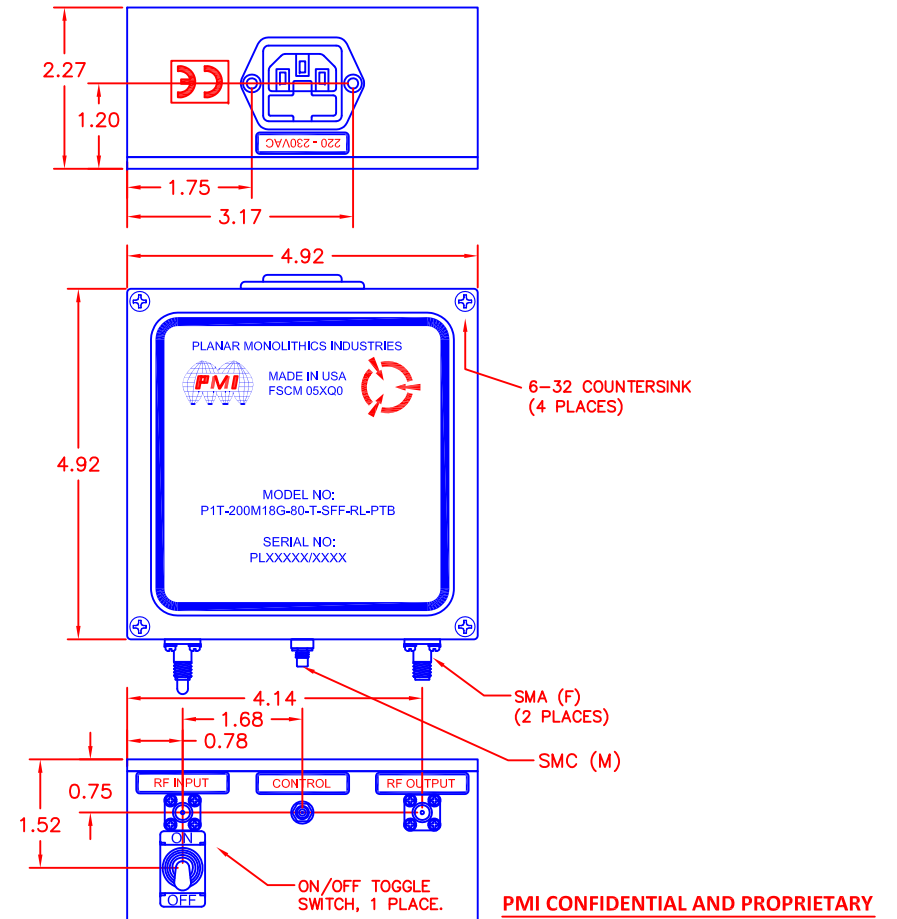
- FREQUENCY: \_\_\_\_\_ 0.2 TO 18.0 GHz
- ON INSERTION LOSS: \_\_\_\_\_ 3.5 dB MAXIMUM
- ISOLATION: \_\_\_\_\_ 80 dB MINIMUM
- POWER HANDLING WITHOUT DEGRADATION: \_\_\_\_\_ +27 dBm
- TEMPERATURE RANGE: \_\_\_\_\_ -20°C TO +80°C
- RISE TIME: \_\_\_\_\_ 10 ns MAXIMUM
- FALL TIME: \_\_\_\_\_ 10 ns MAXIMUM
- ON TIME: \_\_\_\_\_ 30 ns MAXIMUM
- OFF TIME: \_\_\_\_\_ 20 ns MAXIMUM
- TTL OR TTLS CONTROL: \_\_\_\_\_ LOGIC "1" (+2 V TO +5 V) SWITCH ON  
LOGIC "0" (-0.3 V TO +0.8 V) SWITCH OFF
- EXTERNAL RF CONNECTORS: \_\_\_\_\_ SMA FEMALE
- EXTERNAL CONTROL CONNECTORS: \_\_\_\_\_ SMC TYPE
- AC VOLTAGE SUPPLY: \_\_\_\_\_ 220 - 230 VAC  
\*SUPPLIED WITH FUSE AND 6 FOOT STANDARD EU 2-PRONG STYLE POWER CORD
- SIZE: \_\_\_\_\_ (L) 4.92" X (W) 4.92" X (H) 2.26"
- FINISH: \_\_\_\_\_ BLUE POWDER COATED

**ENVIRONMENTAL RATINGS:**

- TEMPERATURE: \_\_\_\_\_ -20°C TO +80°C (OPERATING)  
-65°C TO +125°C (STORAGE)
- HUMIDITY: \_\_\_\_\_ MIL-STD-202F, METHOD 103B COND. B
- SHOCK: \_\_\_\_\_ MIL-STD-202F, METHOD 213B COND. B
- VIBRATION: \_\_\_\_\_ MIL-STD-202F, METHOD 204D COND. B
- ALTITUDE: \_\_\_\_\_ MIL-STD-202F, METHOD 105C COND. B
- TEMPERATURE CYCLE: \_\_\_\_\_ MIL-STD-202F, METHOD 107D COND. A

NOTE: THE ABOVE SPECIFICATIONS ARE SUBJECT TO CHANGE OR REVISION

REVISIONS				
ZONE	REV.	DESCRIPTION	DATE	APPROVED
	-	PRELIMINARY	07/19/17	



PMI CONFIDENTIAL AND PROPRIETARY

**PLANAR MONOLITHICS INDUSTRIES, INC.**

7311-F GROVE ROAD  
 FREDERICK, MARYLAND 21704 USA  
 TEL: 301-662-5019 FAX: 301-662-1731  
 WEBSITE: [www.pmi-rf.com](http://www.pmi-rf.com)  
 E-MAIL: [sales@pmi-rf.com](mailto:sales@pmi-rf.com)  
 ISO 9001 CERTIFIED



APPROVALS		DATE	TITLE		
DRAWN	<i>B. Thomas</i>	5/9/16	PRODUCT FEATURE		
REDRAWN	<i>EMF</i>	07/19/17	P1T-200M18G-80-T-SFF-RL-PTB		
ISSUED			SIZE	FSCM NO.	DWG NO.
			A	05XQ0	PRELIMINARY
			SCALE	N:S	SHEET 1 OF 1

ALL DIMENSIONS ARE IN INCHES  
 TOLERANCES:  
 X.XX ±0.020  
 X.XXX ±0.010