

DESCRIPTION

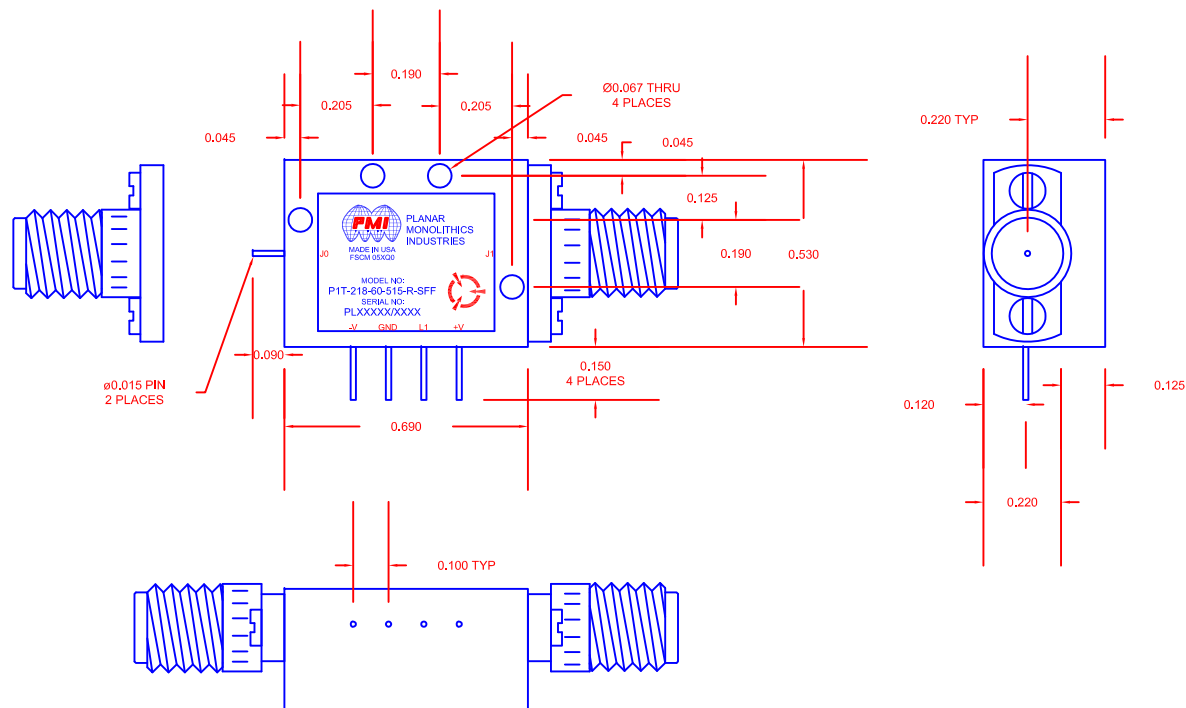
PMI MODEL NO. P1T-218-60-515-R-SFF IS A SINGLE POLE, SINGLE THROW, REFLECTIVE SWITCH OPERATING OVER THE FREQUENCY RANGE OF 2.0 TO 18.0 GHz. IT HAS A MINIMUM ISOLATION OF 60 dB AND A MAXIMUM INSERTION LOSS OF 1.8 dB. THIS MODEL IS OUTFITTED WITH SMA FEMALE CONNECTORS.

| REVISIONS | | | | |
|-----------|------|-------------|-----------|----------|
| ZONE | REV. | DESCRIPTION | DATE | APPROVED |
| | - | PRELIMINARY | 6/18/2021 | |
| | | | | |
| | | | | |

SPECIFICATIONS

- FREQUENCY RANGE: ----- 2.0 TO 18.0 GHz
- INTERFACE: ----- TTL (1: OFF, 0: ON)
- ISOLATION: ----- 60 dB MIN
- INSERTION LOSS: ----- 1.8 dB MAX
- SWITCHING TIME: ----- 30 ns MAX
- VSWR: ----- 1.9:1 MAX
- IMPEDANCE: ----- 50 OHMS
- RF INPUT POWER: ----- 1W CW / 2W PEAK MAX
- SUPPLY VOLTAGES: ----- +5 V
-15 V
- SUPPLY CURRENT: ----- +65 mA MAX
-65 mA MAX
- CONNECTORS: ----- SMA FEMALE
- FINISH: ----- GOLD PLATED

MECHANICAL OUTLINE



ENVIRONMENTAL RATINGS

- TEMPERATURE: ----- -30 °C TO +95 °C (OPERATING)
-55 °C TO +125 °C (STORAGE)
- VIBRATION: ----- RANDOM: 20 - 500 Hz
SPECTRAL DENSITY: 0.01g²/Hz
RMS: 2.2 g
- MECHANICAL SHOCK: ----- PEAK: 100 g
DURATION: 4 ms, HALFSINE
- HUMIDITY: ----- 90%
- PRESSURE: ----- OPERATION: 0.6 - 1.4 BAR
STORAGE: 0.3 - 1.4 BAR
VARIATION: ±0.5 BAR
- CORROSION: ----- RESISTANT AGAINST SEAWATER
- MTBF: ----- 200,000 h
- EMC: ----- NO RADIATION

ALL DIMENSIONS
ARE IN INCHES [mm]
TOLERANCES:
X.XX ±0.020
X.XXX ±0.010

PMI CONFIDENTIAL AND PROPRIETARY

NOTE: SPECIFICATIONS WILL VARY OVER OPERATING TEMPERATURE

NOTE: THE ABOVE SPECIFICATIONS ARE SUBJECT TO CHANGE OR REVISION

PLANAR MONOLITHICS INDUSTRIES, INC.

7311-F GROVE ROAD

FREDERICK, MARYLAND 21704 USA

TEL: (301)-662-5019, FAX: (301)-662-1731

WEB: www.pmi-rf.com, EMAIL: sales@pmi-rf.com

ISO 9001 CERTIFIED



| APPROVALS | | DATE | TITLE | | | REV. |
|---------------------|--|-----------|---|-------------------|------------------------|------|
| DRAWN <i>JPH</i> | | 6/18/2021 | PRODUCT FEATURE P1T-218-60-515-R-SFF | | | - |
| REDRAWN | | | SIZE A | FSCM NO. 05XQ0 | DWG NO. PRELIMINARY | |
| ISSUED | | | SCALE N:S | SHEET 1 OF 1 | | |