

**TYPICAL CHARACTERISTICS
ON
P1T-2G18G-60-R-55-SFF**

PLANAR MONOLITHICS INDUSTRIES MODEL NUMBER P1T-2G18G-60-R-55-SFF IS A SINGLE POLE REFLECTIVE SWITCH OPERATING OVER THE FREQUENCY RANGE OF 2.0 TO 18.0 GHz. IT HAS A MINIMUM ISOLATION OF 60 dB AND A MAXIMUM INSERTION LOSS OF 2 dB. THIS MODEL IS OUTFITTED WITH SMA FEMALE CONNECTORS.



Reported By S Azhar
Tested By S Azhar
Date Oct 10th 2024

**TYPICAL CHARACTERISTICS
ON
P1T-2G18G-60-R-55-SFF**

PRODUCT FEATURE

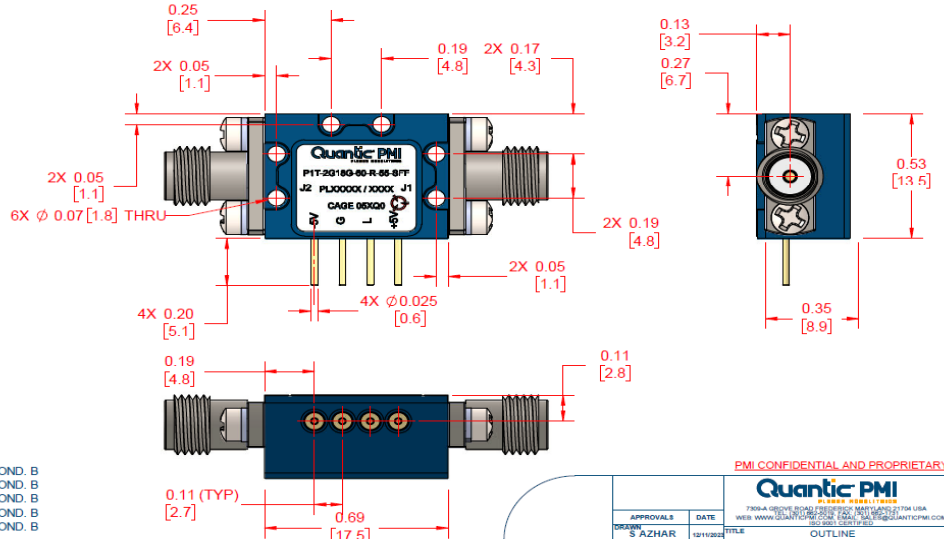
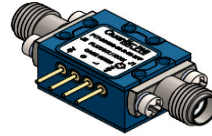
DESCRIPTION:

PLANAR MONOLITHICS INDUSTRIES MODEL NUMBER P1T-2G18G-60-R-55-SFF IS A SINGLE POLE REFLECTIVE SWITCH OPERATING OVER THE FREQUENCY RANGE OF 2.0 TO 18.0 GHz. IT HAS A MINIMUM ISOLATION OF 60 dB AND A MAXIMUM INSERTION LOSS OF 2 dB. THIS MODEL IS OUTFITTED WITH SMA FEMALE CONNECTORS.

SPECIFICATIONS:

- FREQUENCY RANGE:..... 2.0 TO 18.0 GHz
- INSERTION LOSS:..... 2.0 dB MAX
- ISOLATION:..... 60 dB MIN
- VSWR:..... 2.0:1 MAX
- SWITCHING SPEED:..... 25 ns MAX
- SUPPLY VOLTAGES :..... +5V @ 65 mA Max, -5V @ 65 mA MAX
- CONNECTORS:..... SMA FEMALE (FIELD REPLACABLE)
- FINISH:..... PAINTED BLUE
- INTERFACE:..... TTL (SEE TRUTH TABLE)

TRUTH TABLE	
L	OUTPUT
"1"	L
"0"	ISO



ENVIRONMENTAL RATINGS:

- TEMPERATURE:..... -54°C TO +85°C (OPERATING)
..... -60°C TO +125°C (STORAGE)
- HUMIDITY:..... MIL-STD-202, METHOD 103B COND. B
- MECHANICAL SHOCK:..... MIL-STD-202, METHOD 213B COND. B
- VIBRATION:..... MIL-STD-202, METHOD 204D COND. B
- ALTITUDE:..... MIL-STD-202, METHOD 105C COND. B
- TEMPERATURE CYCLE:..... MIL-STD-202, METHOD 105C COND. B

NOTE: SPECIFICATIONS WILL VARY OVER TEMPERATURE
NOTE: THE ABOVE SPECIFICATIONS ARE SUBJECT TO CHANGE OR REVISION

ZONE	REV.	DESCRIPTION	DATE	APPROVED
	A1	ORIGINAL RELEASE	12/11/2021	

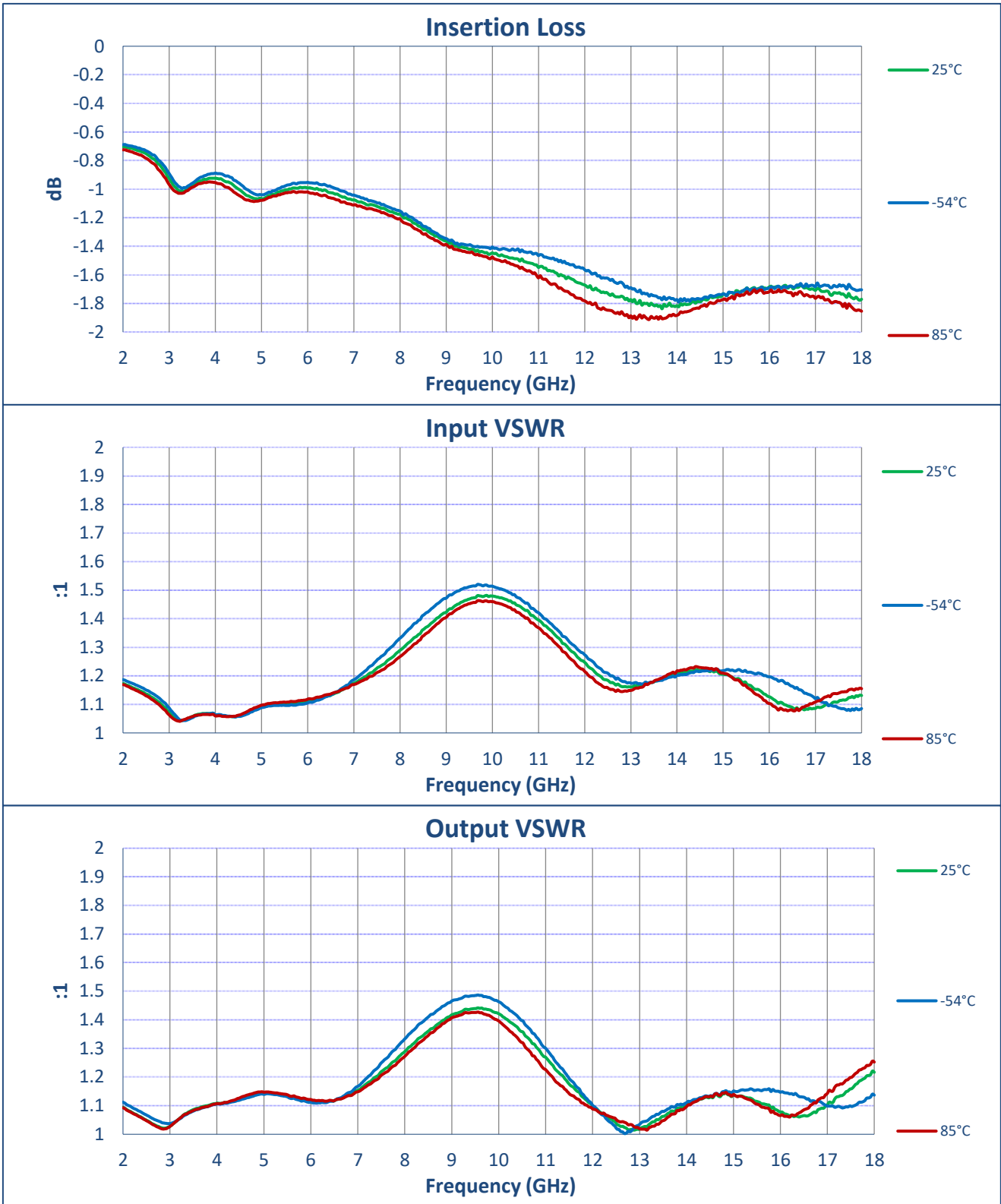
PMI CONFIDENTIAL AND PROPRIETARY

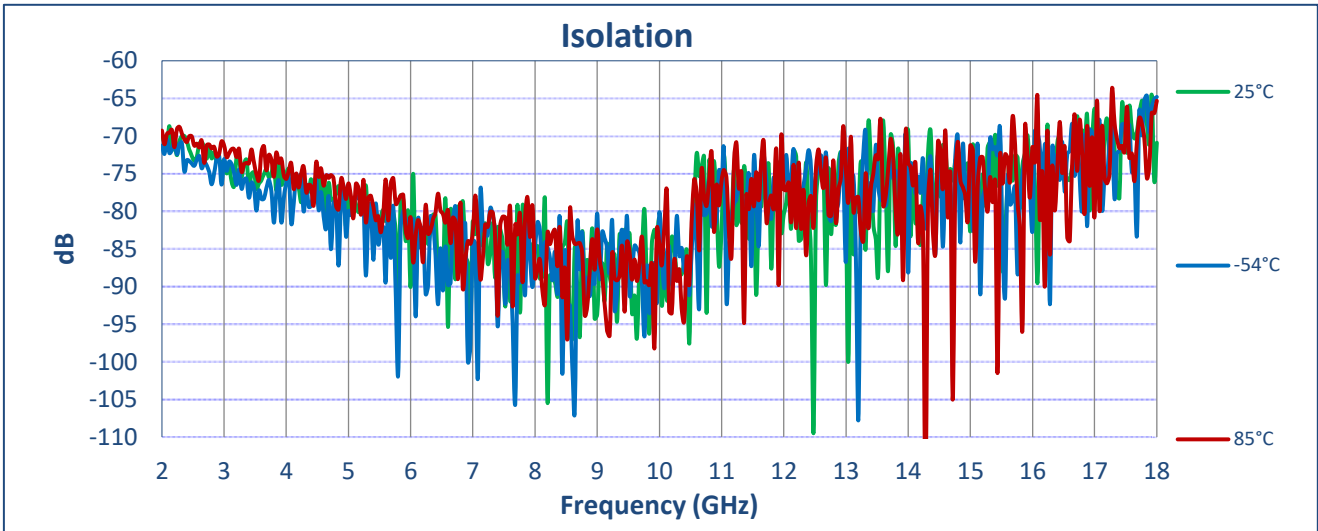
APPROVALS		DATE	TITLE	
DESIGN	S. AZHAR	12/11/2021	OUTLINE	
REDESIGN			P1T-2G18G-60-R-55-SFF	
SIZE	B	FORM NO.	DWG NO.	REV.
		05XQQ	27047420	A1
SCALE 3:1		SHEET 1 OF 1		

**TYPICAL CHARACTERISTICS
ON
P1T-2G18G-60-R-55-SFF**

TEST DATA

TEST ITEM	PARAMETERS	SPECIFIED VALUE	TEST RESULTS		
			25°C	-54°C	85°C
1	Frequency Range	2 GHz to 18 GHz	2 GHz to 18 GHz		
2	Insertion Loss	2 dB Max.	1.84 dB	1.79 dB	1.91 dB
3	Isolation	60 dB Min.	64.5 dB	64.7 dB	63.8 dB
4	VSWR: In/Out	2:1 Max.	1.48:1 In 1.44:1 Out	1.52:1 In 1.49:1 Out	1.46:1 In 1.43:1 Out
5	Switching Speed Max	25 ns Max.	On: 18.3 ns Off: 23.2 ns		
6	Power Supply	5 V @ 65 mA Max. -5 V @ 65 mA Max.	5 V @ 18 mA -5 V @ 20 mA	5 V @ 17 mA -5 V @ 19 mA	5 V @ 18 mA -5 V @ 20 mA





Switching Speed Off



RF - YELLOW
TTL - GREEN

Off Time: 23.247 ns

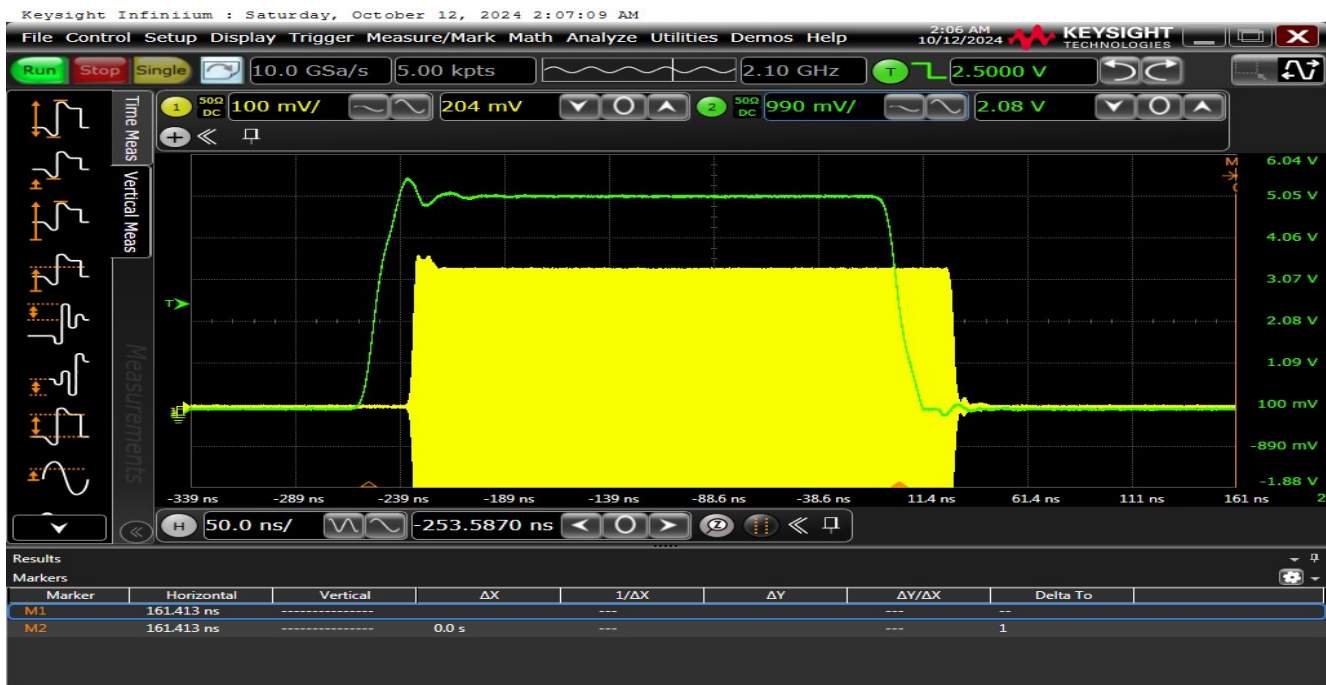
Switching Speed On



RF - YELLOW
TTL - GREEN

On Time: 18.309 ns

Full Pulse



RF - YELLOW
TTL - GREEN

7309-A Grove Road Frederick, MD 21704 USA Phone: (301)662-5019 Fax: (301)662-1731
Email: sales@pmi-rf.com

**TYPICAL CHARACTERISTICS
ON
P1T-2G18G-60-R-55-SFF**

Transient On



TRANSIENT - YELLOW
TTL - GREEN

Transient: 1.25 V

Transient off



TRANSIENT - YELLOW
TTL - GREEN

Transient: 1.00 V