

## DESCRIPTION

PMI MODEL NUMBER: P2T-9D25G-80-R-SFF-3W IS A SINGLE POLE, TWO THROW REFLECTIVE PIN DIODE SWITCH THAT OPERATES OVER A SINGLE FREQUENCY RANGE OF 9.25GHz ± 30MHz. THIS MODEL HAS A MAXIMUM INSERTION LOSS OF 1.2dB AND A MINIMUM ISOLATION SPECIFICATION OF 80dB. IT OPERATES AT 34dBm CW MAXIMUM, OR +33dBm, 2 MICROSECOND PULSE WIDTH (PW), AND 8KHz OPERATING.

## SPECIFICATIONS

- FREQUENCY RANGE: 9.25GHz ± 30MHz
- INSERTION LOSS: 1.2dB MAX
- ISOLATION: 80dB MIN
- VSWR: 1.5:1 MAX
- RISE/FALL TIME: 10ns MAX
- SWITCHING TIME: 20ns MAX
- INPUT POWER: +34dBm CW MAX, OR  
+33dBm PEAK, 2us PW,  
8KHz (OPERATING)
- DC SUPPLY: +12VDC @ 45mA  
-12VDC @ 15mA
- CONTROL LOGIC: INDEPENDENT 2 LINE TTL  
"0" = ISOLATION  
"1" = INSERTION LOSS
- SIZE: (L) 1.5" X (W) 1.5" (H) 0.4"
- FINISH: GRAY EPOXY POLIMIDE COATING  
IAW MIL-C-22750, TYPE I OVER EPOXY  
POLIMIDE PRIMER IAW MIL-P-23377,  
TYPE I, CLASS 1 OR 3.

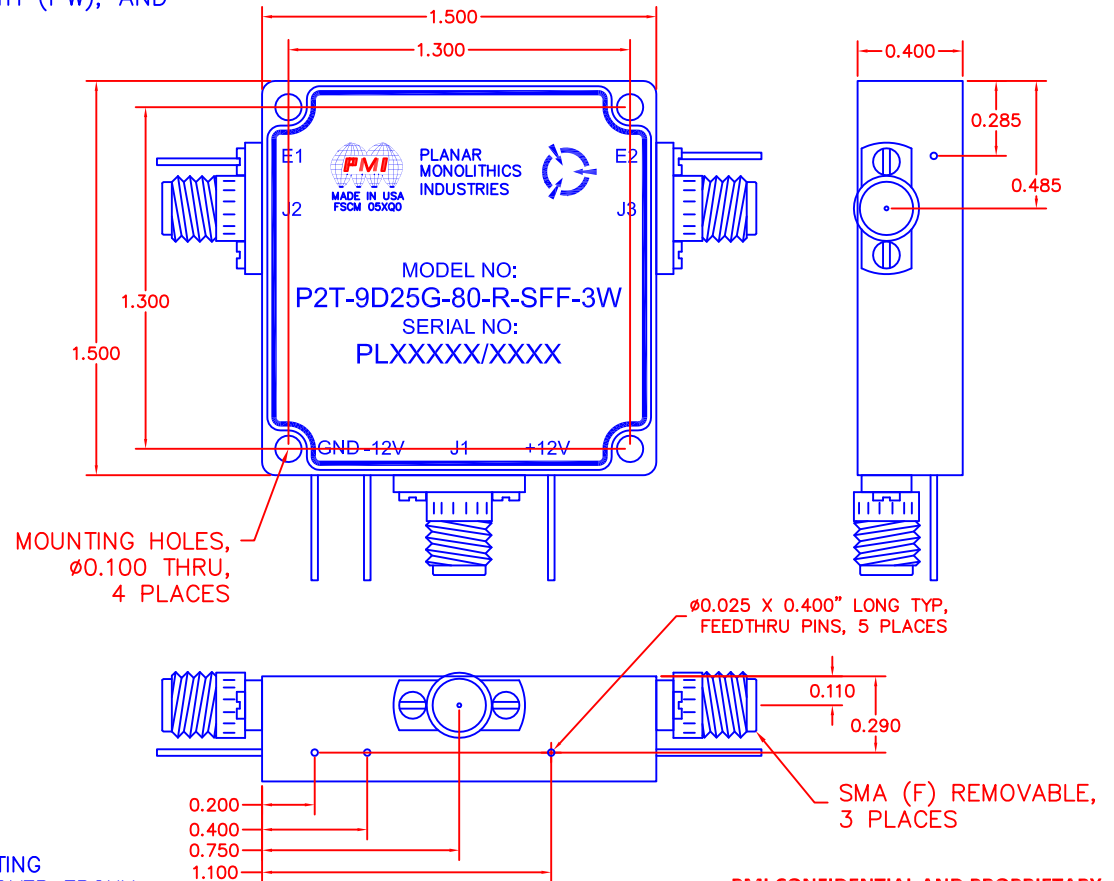
## ENVIRONMENTAL RATINGS:

- TEMPERATURE: -40°C TO +85°C (OPERATING)  
-65°C TO +125°C (STORAGE)
- HUMIDITY: MIL-STD-202F, METHOD 103B COND. B
- SHOCK: MIL-STD-202F, METHOD 213B COND. B
- VIBRATION: MIL-STD-202F, METHOD 204D COND. B
- ALTITUDE: MIL-STD-202F, METHOD 105C COND. B
- TEMPERATURE CYCLE: MIL-STD-202F, METHOD 107 COND. A

NOTE: THE ABOVE SPECIFICATIONS ARE SUBJECT TO CHANGE OR REVISION

REVISIONS				
ZONE	REV.	DESCRIPTION	DATE	APPROVED
	1	ORIGINAL RELEASE	08/22/13	
	A1	ECN # 14-0017	02/07/14	

## MECHANICAL OUTLINE



PMI CONFIDENTIAL AND PROPRIETARY

## PLANAR MONOLITHICS INDUSTRIES, INC.

7311-F GROVE ROAD  
FREDERICK, MARYLAND 21704 USA  
TEL: 301-662-5019 FAX: 301-662-1731  
WEBSITE: [www.pmi-rf.com](http://www.pmi-rf.com)  
E-MAIL: [sales@pmi-rf.com](mailto:sales@pmi-rf.com)  
ISO 9001 CERTIFIED



ALL DIMENSIONS ARE IN INCHES  
TOLERANCES:  
X.XX ±0.020  
X.XXX ±0.010

APPROVALS		DATE	TITLE			
DRAWN <i>fk</i>		08/22/13	PRODUCT FEATURE			
CHECKED			P2T-9D25G-80-R-SFF-3W			
ISSUED			SIZE	FSCM NO.	DWG NO.	REV.
			A	05XQ0	27020141	A1
			SCALE	N: S	SHEET	1 OF 1