

## DESCRIPTION

PMI MODEL P2T-10M6G-35-R-5V-SFF-HIP100W IS A REFLECTIVE, SINGLE POLE, TWO THROW PIN DIODE SWITCH THAT OPERATES OVER THE 10 MHz TO 6000 MHz FREQUENCY RANGE. THIS MODEL IS CAPABLE OF HANDLING AN INPUT POWER LEVEL OF 100 WATTS CW WHILE PROVIDING SWITCHING SPEEDS OF <100 ns AND REQUIRES A SINGLE +5 VDC SUPPLY. THIS MODEL INCORPORATES A TTL COMPATIBLE DRIVER FOR EASY SYSTEM INTEGRATION.

## SPECIFICATIONS

- FREQUENCY RANGE: 10 TO 6000 MHz
- ISOLATION: 35 dB TYPICAL, 25 dB MINIMUM
- INSERTION LOSS: 2.0 dB TYPICAL,
- VSWR IN/OUT: 2.0:1 TYPICAL
- OPERATING INPUT POWER: 100 WATTS CW MAXIMUM (NOT TO BE SWITCHED ANY HIGHER THAN 50 kHz [PRI])
- RF SWITCHING SPEED: 100 ns TYPICAL (50% TTL TO 10% / 90% RF)
- IMPEDANCE: 50 OHMS
- DC VOLTAGE: +5 V @ 45 mA TYPICAL
- CONTROL SIGNAL: TTL LOGIC (SEE LOGIC TABLE)
- CONNECTORS: SMA(F) - REMOVABLE
- CONTROL CONNECTORS: SOLDER PINS
- FINISH: EPOXY PAINTED BLUE BOTTOM SIDE TO BE UNPAINTED (SILVER PLATED)

## ENVIRONMENTAL RATINGS

- TEMPERATURE: -54 °C TO +85 °C (OPERATING)  
-55 °C TO +125 °C (STORAGE)
- SHOCK: MIL-STD-202F, METHOD 213B COND. B
- VIBRATION: MIL-STD-202F, METHOD 204D COND. B
- ALTITUDE: MIL-STD-202F, METHOD 105C COND. B
- TEMPERATURE CYCLE: MIL-STD-202F, METHOD 107D

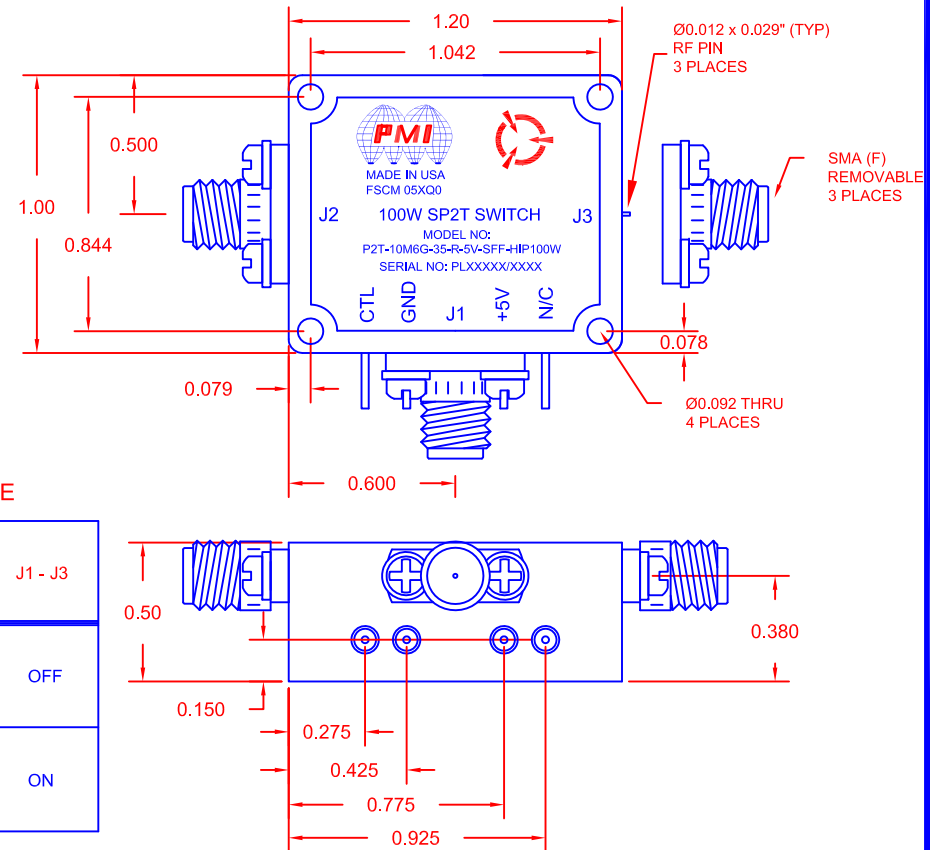
NOTE: SPECIFICATIONS WILL VARY OVER OPERATING TEMPERATURE  
NOTE: THE ABOVE SPECIFICATIONS ARE SUBJECT TO CHANGE OR REVISION

ALL DIMENSIONS ARE IN INCHES  
TOLERANCES:  
X.XX ±0.020  
X.XXX ±0.010

**PMI CONFIDENTIAL AND PROPRIETARY**

REVISIONS				
ZONE	REV.	DESCRIPTION	DATE	APPROVED
	-	PRELIMINARY	06/17/15	JCM

## MECHANICAL OUTLINE



## LOGIC TABLE

CTL	J1 - J2	J1 - J3
0	ON	OFF
1	OFF	ON

**PLANAR MONOLITHICS INDUSTRIES, INC.**  
7311-F GROVE ROAD  
FREDERICK, MARYLAND 21704 USA  
TEL: (301)-662-5019, FAX: (301)-662-1731  
WEB: www.pmi-rf.com, EMAIL: sales@pmi-rf.com  
ISO 9001 CERTIFIED



APPROVALS		DATE	TITLE			
DRAWN <i>K. MASON</i>		06/17/15	PRODUCT FEATURE P2T-10M6G-35-R-5V-SFF-HIP100W			
CHECKED			SIZE A	FSCM NO. 05XQ0	DWG NO. PRELIMINARY	REV. -
ISSUED			SCALE N:S	SHEET 1 OF 1		