

DESCRIPTION

PMI MODEL P4T-100M40G-90-T-512-292FF IS AN ABSORPTIVE, SINGLE POLE, FOUR THROW PIN DIODE SWITCH THAT OPERATES OVER THE 0.1 GHz TO 40 GHz FREQUENCY RANGE. THIS MODEL INCORPORATES A TTL COMPATIBLE DRIVER FOR EASY SYSTEM INTEGRATION.

SPECIFICATIONS

- FREQUENCY RANGE: 0.1 TO 40 GHz
- ISOLATION: 100dB Goal (0.1 to 18 GHz)
90dB Goal (18 to 26.5 GHz)
85dB Goal (26.5 to 40 GHz)
- INSERTION LOSS: 6dB Typ (0.1 to 18 GHz)
8dB Typ (18 to 26.5 GHz)
10dB Typ (26.5 to 40 GHz)
- VSWR: 2.5:1 Goal, 2.75:1 Max
- OPERATING INPUT POWER: +20 dBm CW MAX
- RF SWITCHING SPEED: 100ns Max
- DC VOLTAGE: +5V @ 200 mA MAX
-12V @ 100 mA MAX
- CONTROL SIGNAL: 2 BIT DECODED TTL
SEE LOGIC TABLE
- CONNECTORS IN/OUT: 2.92mm FEMALE CONNECTORS
- CONTROL: SOLDER PINS
- SIZE: (L)2.0" X (W)1.0" X (H)0.4"
- FINISH: GOLD PLATED

LOGIC TABLE		
2 BIT DECODER		
E1	E2	FUNCTION
0	0	J1-J2 "Low Loss"
0	1	J1-J3 "Low Loss"
1	0	J1-J4 "Low Loss"
1	1	J1-J5 "Low Loss"

ENVIRONMENTAL RATINGS

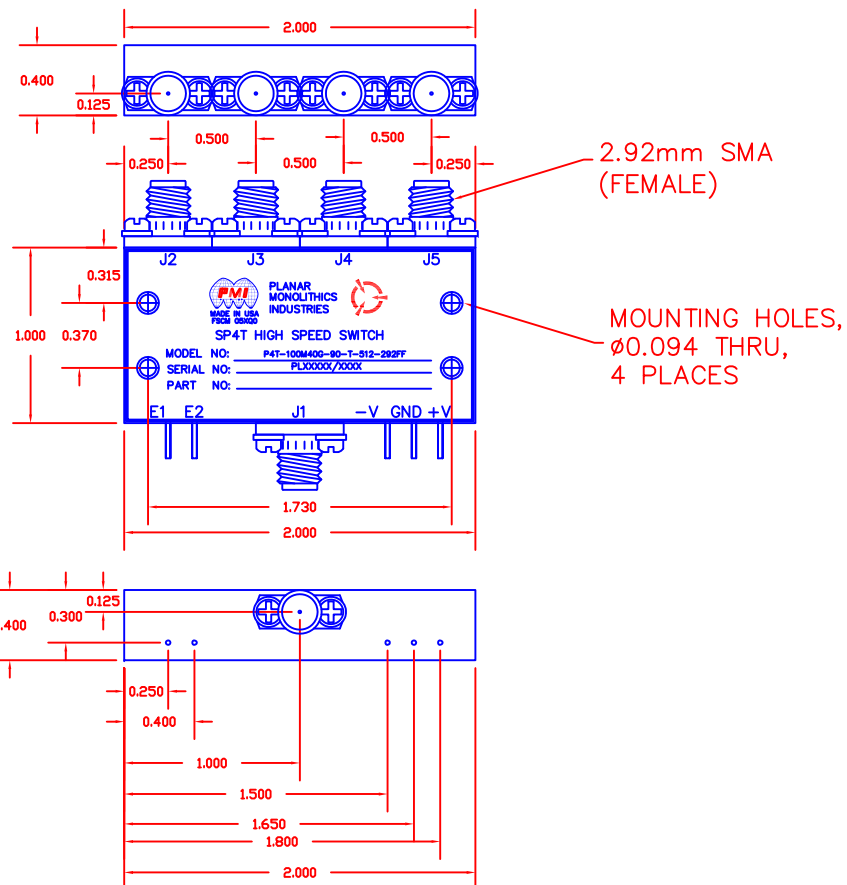
- TEMPERATURE: -40°C TO +85°C (OPERATING)
-55°C TO +125°C (STORAGE)
- HUMIDITY: MIL-STD-202F, METHOD 103B COND. B
- SHOCK: MIL-STD-202F, METHOD 213B COND. B
- VIBRATION: MIL-STD-202F, METHOD 204D COND. B
- ALTITUDE: MIL-STD-202F, METHOD 105C COND. B
- SALT FOG: MIL-STD-202F, METHOD 107D COND. A
- FUNGUS: MIL-STD-810C, METHOD 508.2
- TEMPERATURE CYCLE: MIL-STD-202F, METHOD 107

NOTE: SPECIFICATIONS WILL VARY OVER OPERATING TEMPERATURE
NOTE: THE ABOVE SPECIFICATIONS ARE SUBJECT TO CHANGE OR REVISION

ALL DIMENSIONS ARE IN INCHES
TOLERANCES:
X.XX ±0.020
X.XXX ±0.010

REVISIONS				
ZONE	REV.	DESCRIPTION	DATE	APPROVED
	A1	ORIGINAL RELEASE	2/18/13	
	A2	ECN # 13-0168	09/25/13	

MECHANICAL OUTLINE



PMI CONFIDENTIAL AND PROPRIETARY

PLANAR MONOLITHICS INDUSTRIES, INC.

7311-F GROVE ROAD
FREDERICK, MARYLAND 21704 USA
TEL: 301-662-5019 FAX: 301-662-1731
WEBSITE: www.pmi-rf.com
E-MAIL: sales@pmi-rf.com
ISO 9001 CERTIFIED



APPROVALS		DATE	TITLE			
DRAWN <i>afk</i>		02/18/13	PRODUCT FEATURE P4T-100M40G-90-T-512-292FF			
CHECKED			SIZE	FSCM NO.	DWG NO.	REV.
ISSUED			A	05XQ0	27018041	A2
			SCALE	N: S		SHEET 1 OF 1