

DESCRIPTION

PMI MODEL: P4T-500M2G-50-R-SFF-IND IS A 500MHZ TO 2.0GHZ, SINGLE POLE FOUR THROW, REFLECTIVE SWITCH WITH LOW INSERTION LOSS, HIGH ISOLATION AND WITH INTEGRATED TTL DRIVER.

SPECIFICATIONS

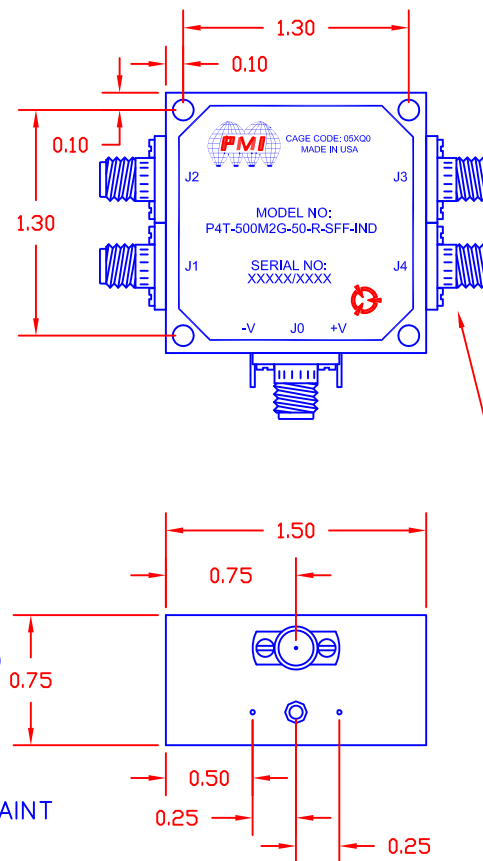
- FREQUENCY RANGE: 500MHz to 2.0GHz
- INSERTION LOSS: 2.5dB Max.
within 0.5dB amplitude tracking for all output ports.
- ISOLATION: 50dB Min.
- VSWR: 2.0:1 Max.
- SURVIVAL POWER (AT J0): 1W CW or 75W Peak (1usec PW) Max.
- OPERATING POWER: +20dBm CW Max.
- SWITCHING SPEED: 2us Max.
- POWER SUPPLY: + 5V +/-5% @ 200 mA Max.
-12 to 15V @ 60mA Max
- CONTROL: Independent TTL Control
3.2mA sink current max. at Logic "0" and 750uA max. source current at Logic "1" input voltage.
Logic "0" - ON (Insertion Loss State)
Logic "1" - OFF (Isolation Loss State)
All Logic Line are Pulled High "1"
- SIZE: (L) 1.5" X (W) 1.5" X (H) 0.75"
- FINISH: BLUE EPOXY PAINT
MOUNTING SURFACE TO BE FREE OF PAINT

Note 1: One switch arm to be "ON" (Low Loss State) at all times.
Note 2: No "HOT" switching when maximum survival power is present.

ENVIRONMENTAL RATINGS

- TEMPERATURE: -55°C TO + 85°C (OPERATING)
-65°C TO +125°C (STORAGE)
- HUMIDITY: MIL-STD-202C, METHOD 103B COND. B (96 HRS at 95%)
- SHOCK: MIL-STD-202C, METHOD 213B COND. B (75G, 6msec)
- VIBRATION: MIL-STD-202C, METHOD 204A COND. B
- TEMPERATURE CYCLE: MIL-STD-202C, METHOD 102 COND. A (5 Cycles)

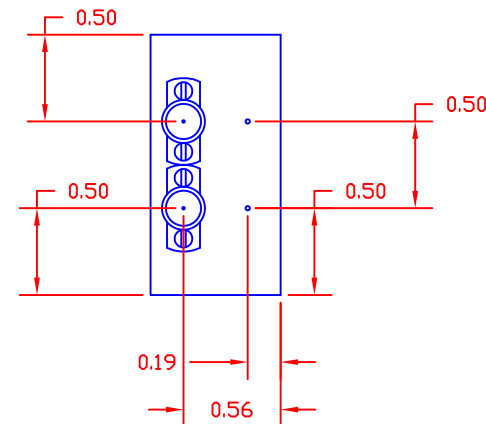
NOTE: SPECIFICATIONS WILL VARY OVER OPERATING TEMPERATURE
NOTE: THE ABOVE SPECIFICATIONS ARE SUBJECT TO CHANGE OR REVISION



SMA (F) CONNECTORS
(5 PLACES)

REVISIONS				
ZONE	REV.	DESCRIPTION	DATE	APPROVED
	-	PRELIMINARY	10/16/14	J.M.

MECHANICAL OUTLINE



PROPRIETARY & CONFIDENTIAL

PLANAR MONOLITHICS INDUSTRIES, INC.

7311-F GROVE ROAD
FREDERICK, MARYLAND 21704 USA
TEL: 301-662-5019 FAX: 301-662-1731
WEBSITE: www.pmi-rf.com
E-MAIL: sales@pmi-rf.com
ISO 9001 CERTIFIED



APPROVALS		DATE	TITLE		
DRAWN <i>K. MASON</i>		10/16/14	PRODUCT FEATURE P4T-500M2G-50-R-SFF-IND		
CHECKED			SIZE A	FSCM NO. 05XQ0	DWG NO. PRELIMINARY
ISSUED			SCALE N: S		REV. -
					SHEET 1 OF 1

ALL DIMENSIONS ARE IN INCHES
TOLERANCES:
X.XX ±0.020
X.XXX ±0.010