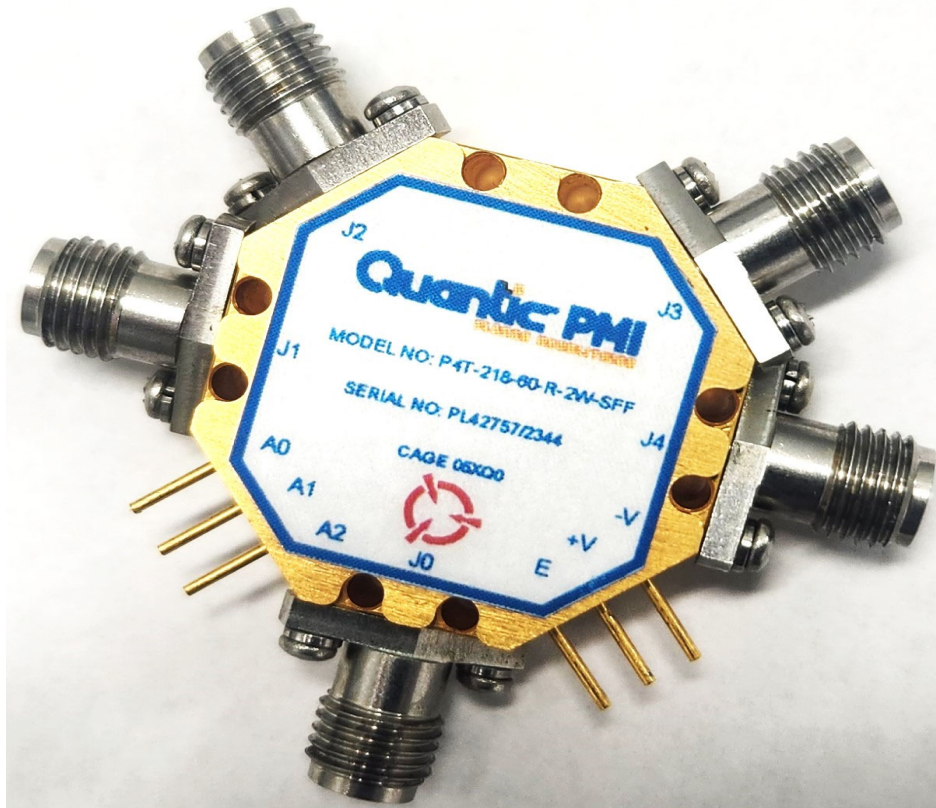


**TYPICAL CHARACTERISTICS  
ON  
P4T-218-60-R-2W-SFF**

**PMI MODEL NUMBER P4T-218-60-R-2W-SFF IS A SINGLE POLE, FOUR THROW REFLECTIVE SWITCH DESIGNED TO OPERATE OVER THE 2 GHz TO 18 GHz FREQUENCY RANGE. THIS MODEL IS DESIGNED TO MAINTAIN LOW INSERTION LOSS, HIGH ISOLATION, FAST SWITCHING SPEED, AND 2 WATT PEAK POWER HANDLING.**



**Reported By** Shane O'Neill  
**AUTHOR** Noor Azhar  
**DATE** November 08 2

7309-A Grove Road Frederick, MD 21704 USA Phone: (301)662-5019 Fax: (301)662-1731  
Email: sales@quanticpmi.com

**TYPICAL CHARACTERISTICS  
ON  
P4T-218-60-R-2W-SFF  
PRODUCT FEATURE**

**DESCRIPTION:**

PMI MODEL NUMBER P4T-218-60-R-2W-SFF IS A SINGLE POLE, FOUR THROW REFLECTIVE SWITCH DESIGNED TO OPERATE OVER THE 2 GHz TO 18 GHz FREQUENCY RANGE. THIS MODEL IS DESIGNED TO MAINTAIN LOW INSERTION LOSS, HIGH ISOLATION, FAST SWITCHING SPEED, AND 2 WATT PEAK POWER HANDLING.

**SPECIFICATIONS:**

- FREQUENCY RANGE:..... 2 TO 18 GHz
- INSERTION LOSS:..... 3.2dB MAXIMUM
- ISOLATION:..... 60dB MINIMUM
- VSWR:..... 2.0:1 MAXIMUM
- SPEED:..... 100ns MAXIMUM
- CONTROL:..... TTL LOGIC
- POWER INPUT (OPERATING):..... 1W CW MAXIMUM, 2W PEAK MAXIMUM
- POWER SUPPLY :..... +5V TO +15V @ 95mA NOMINAL  
-5V TO -15V @ 65mA NOMINAL
- RF CONNECTORS:..... SMA FEMALE
- DC CONNECTORS:..... SOLDER PINS
- FINISH:..... GOLD PLATED

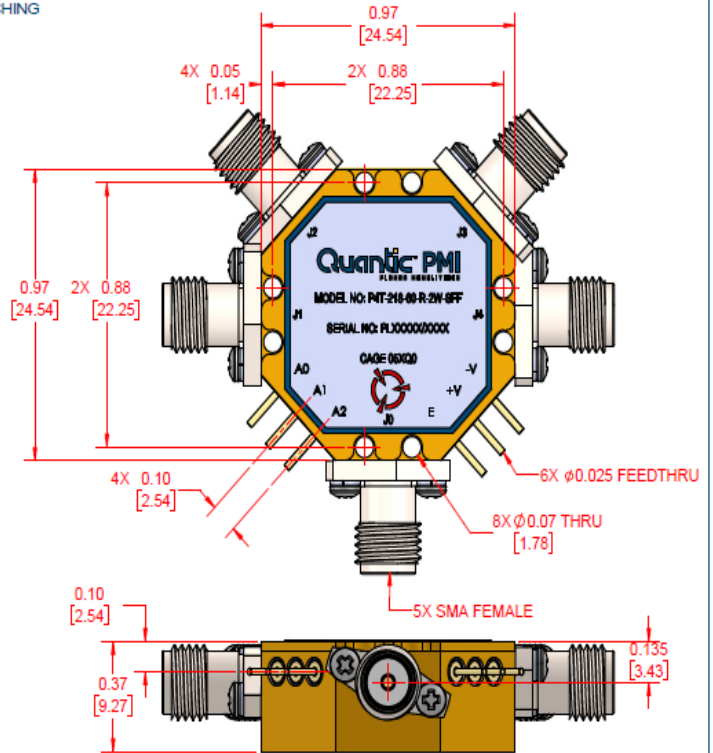
TTL LOGIC CONTROL TABLE							
A0	A1	A2	E	J0-J1	J0-J2	J0-J3	J0-J4
1	0	0	1	I.L.	ISO	ISO	ISO
0	1	0	1	ISO	I.L.	ISO	ISO
0	0	1	1	ISO	ISO	I.L.	ISO
1	0	1	1	ISO	ISO	ISO	I.L.
X	X	X	0	ISO	ISO	ISO	ISO

**ENVIRONMENTAL RATINGS:**

- TEMPERATURE:..... -40°C TO +85°C (OPERATING)  
-55°C TO +125°C (STORAGE)
- HUMIDITY:..... MIL-STD-202, METHOD 103B COND. B
- SHOCK:..... MIL-STD-202, METHOD 213B COND. B
- VIBRATION:..... MIL-STD-202, METHOD 204D COND. B
- ALTITUDE:..... MIL-STD-202, METHOD 105C COND. B
- TEMPERATURE CYCLE:..... MIL-STD-202, METHOD 107D COND. A

NOTE: SPECIFICATIONS WILL VARY OVER TEMPERATURE  
NOTE: THE ABOVE SPECIFICATIONS ARE SUBJECT TO CHANGE OR REVISION

CONF	REV	DESCRIPTION	DATE	APPROVED
	A1	ORIGINAL RELEASE	01/19/08	



PMI CONFIDENTIAL AND PROPRIETARY

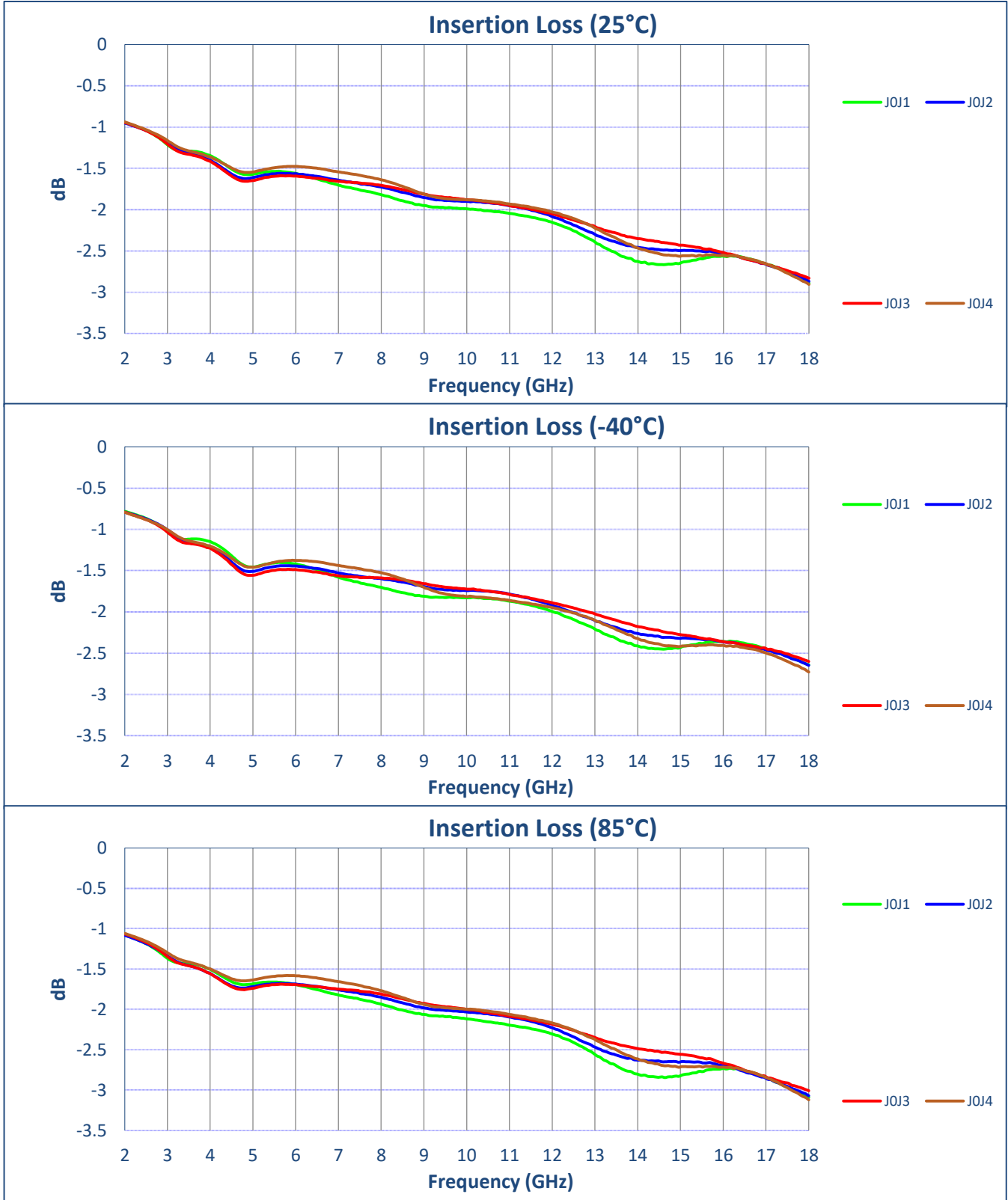
APPROVALS		DATE	TITLE	
DESIGNED BY	S AZHAR	01/19/08	OUTLINE	
DESIGNED BY			ITEM	ITEM NO.
			B	DSXQ0
			REV. NO.	27046680
			REV.	A1
SCALE 3:1			SHEET 1 OF 1	

**TYPICAL CHARACTERISTICS  
ON  
P4T-218-60-R-2W-SFF**

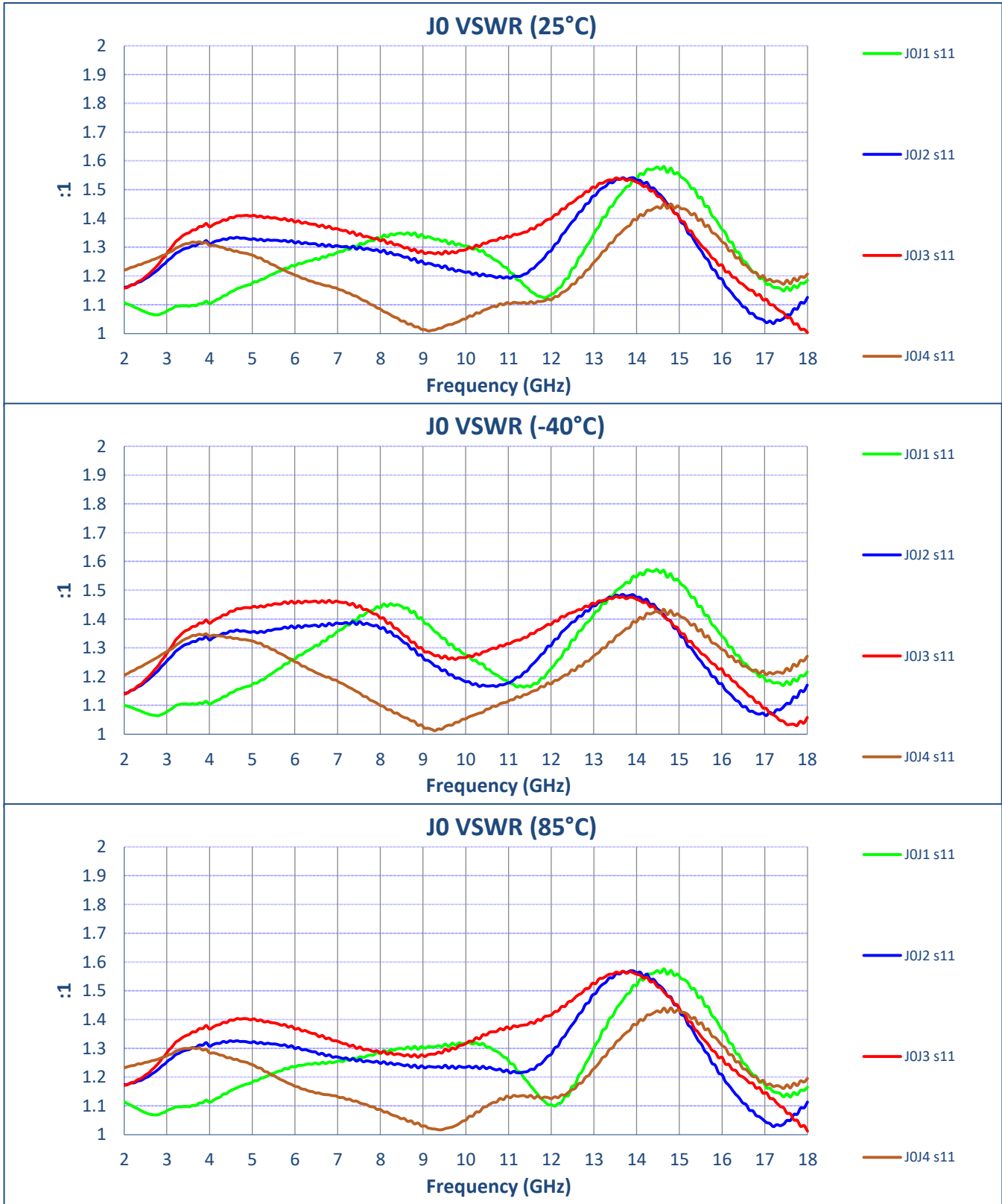
**TEST DATA**

TEST ITEM	PARAMETERS	SPECIFIED VALUE	TEST RESULTS		
			25°C	-40°C	85°C
1	Frequency Range	2 GHz to 18 GHz	2 GHz to 18 GHz	2 GHz to 18 GHz	2 GHz to 18 GHz
2	Insertion Loss	3.2 dB Max.	2.91 dB	2.73 dB	3.12 dB
3	Isolation	60 dB Min.	70.4 dB	70.4 dB	70.4 dB
4	VSWR: In/Out	2:1 Max.	1.58:1 In 1.61:1 Out	1.57:1 In 1.6:1 Out	1.58:1 In 1.63:1 Out
5	Switching Speed Max	100 ns Max.	65 ns	65 ns	65 ns
6	Operating Power	1 Watts CW Max 2 Watts Peak Max	1 Watts CW 2 Watts Peak	1 Watts CW 2 Watts Peak	1 Watts CW 2 Watts Peak
7	Power Supply	5 to 15 V @ 95 mA -5 to -15 V @ 65 mA	+5 to 15V @ 66mA -5 to 15V @ 14mA	+5 to 15V @ 65mA -5 to 15V @ 13mA	+5 to 15V @ 67mA -5 to 15V @ 15mA

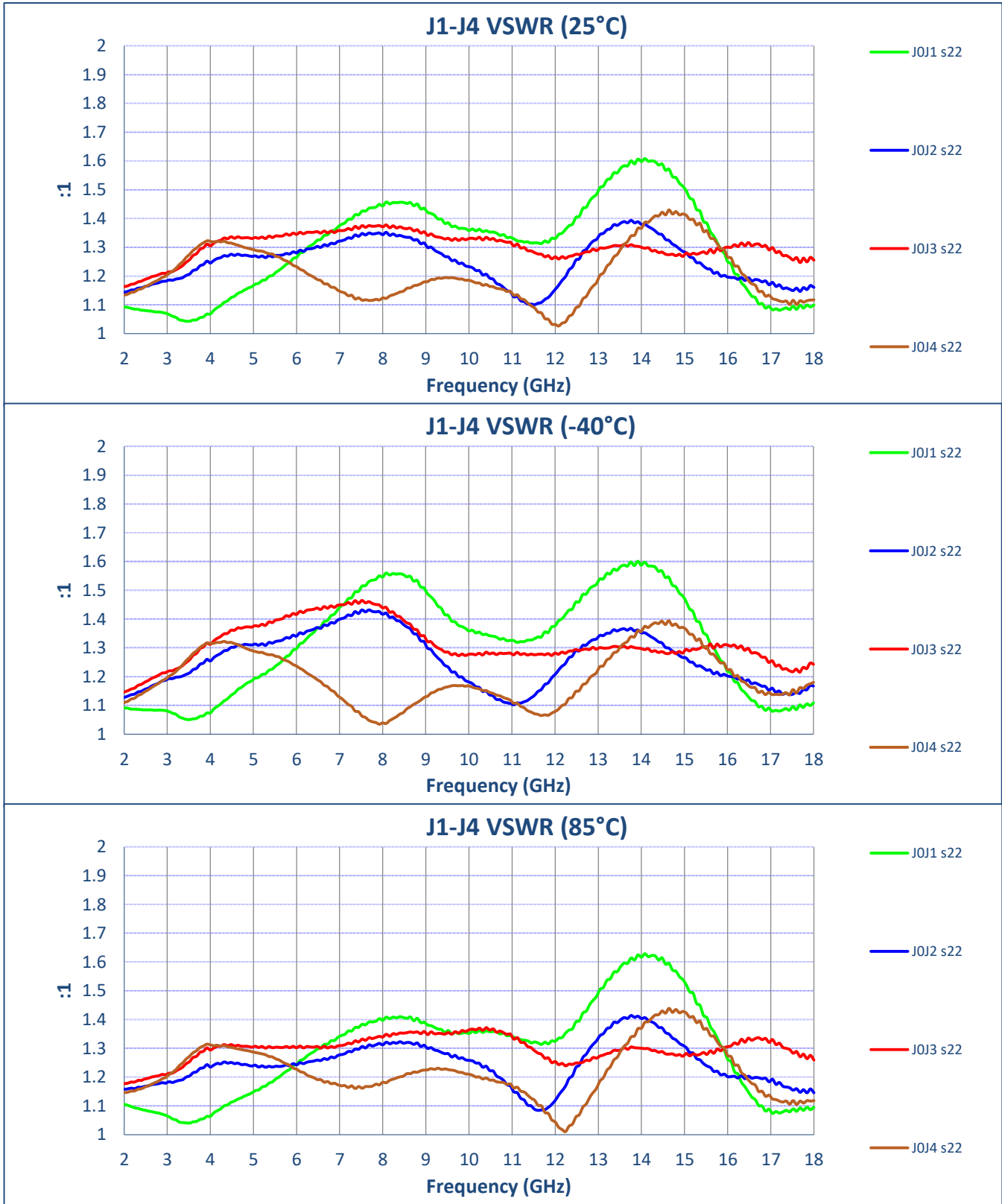
**TYPICAL CHARACTERISTICS  
ON  
P4T-218-60-R-2W-SFF**



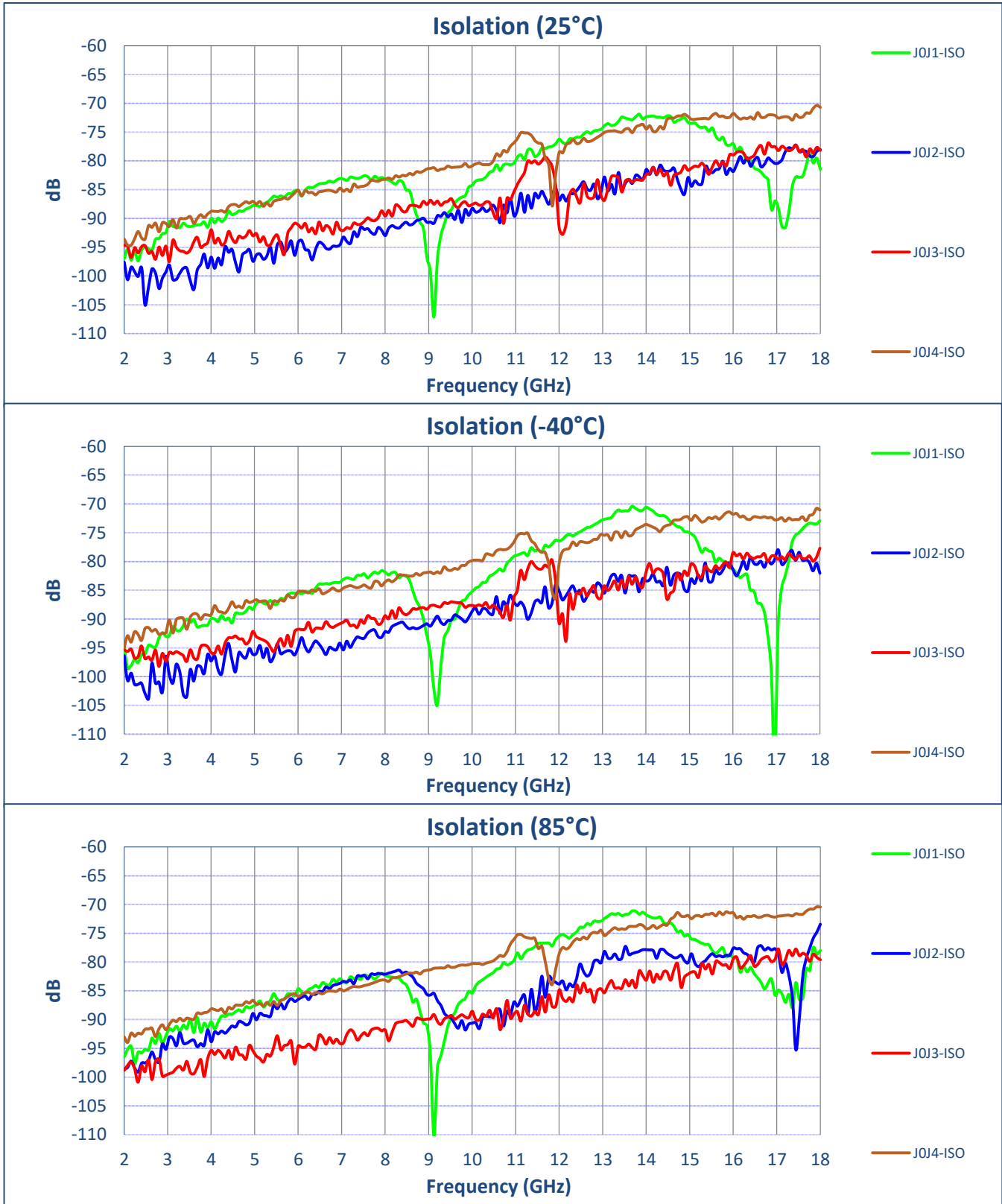
**TYPICAL CHARACTERISTICS  
ON  
P4T-218-60-R-2W-SFF**



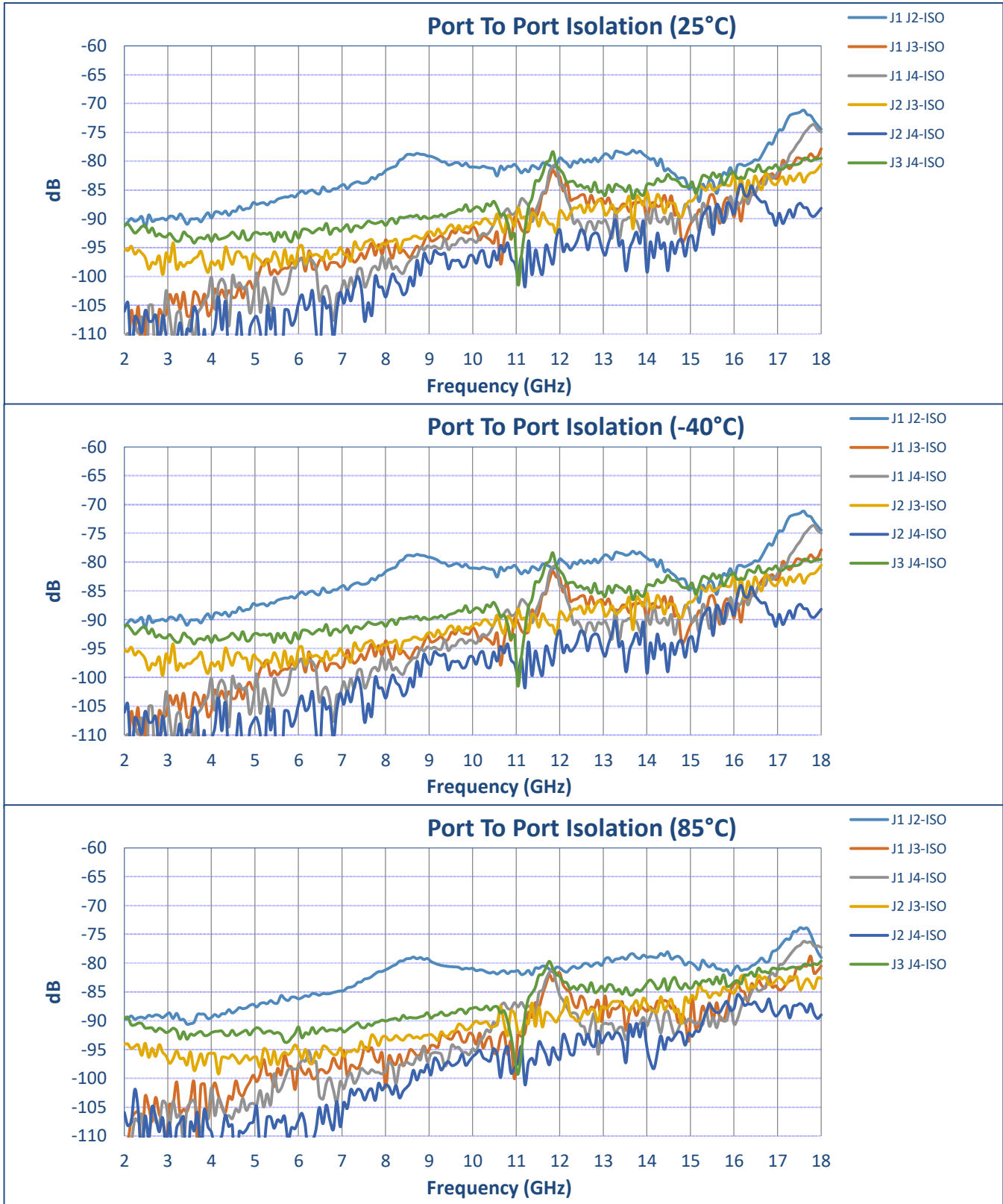
**TYPICAL CHARACTERISTICS  
ON  
P4T-218-60-R-2W-SFF**



**TYPICAL CHARACTERISTICS  
 ON  
 P4T-218-60-R-2W-SFF**

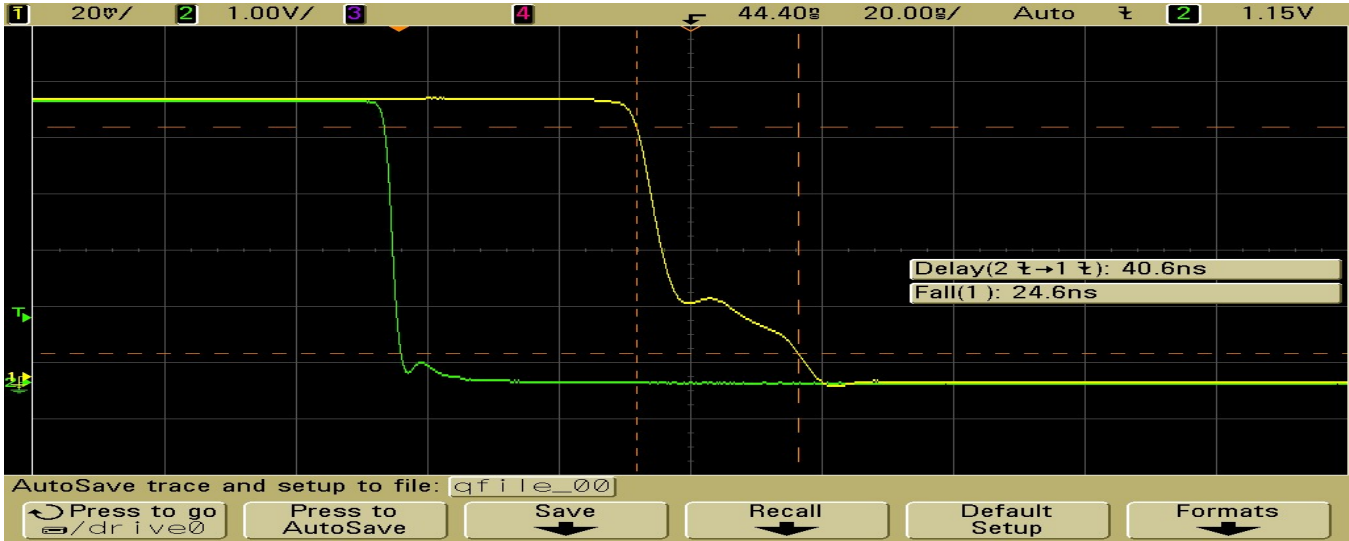


**TYPICAL CHARACTERISTICS  
ON  
P4T-218-60-R-2W-SFF**

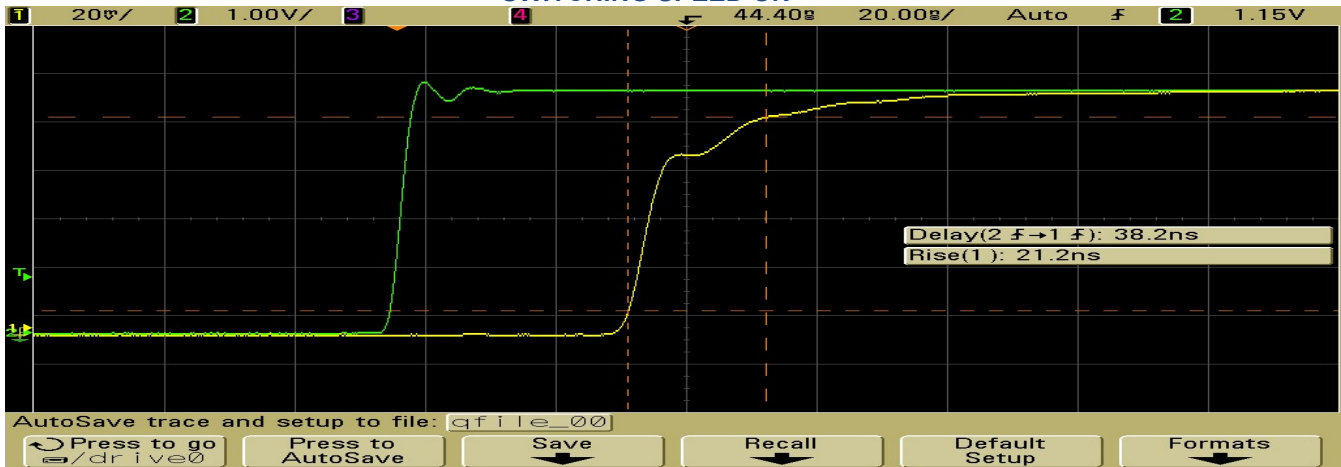


**TYPICAL CHARACTERISTICS  
ON  
P4T-218-60-R-2W-SFF**

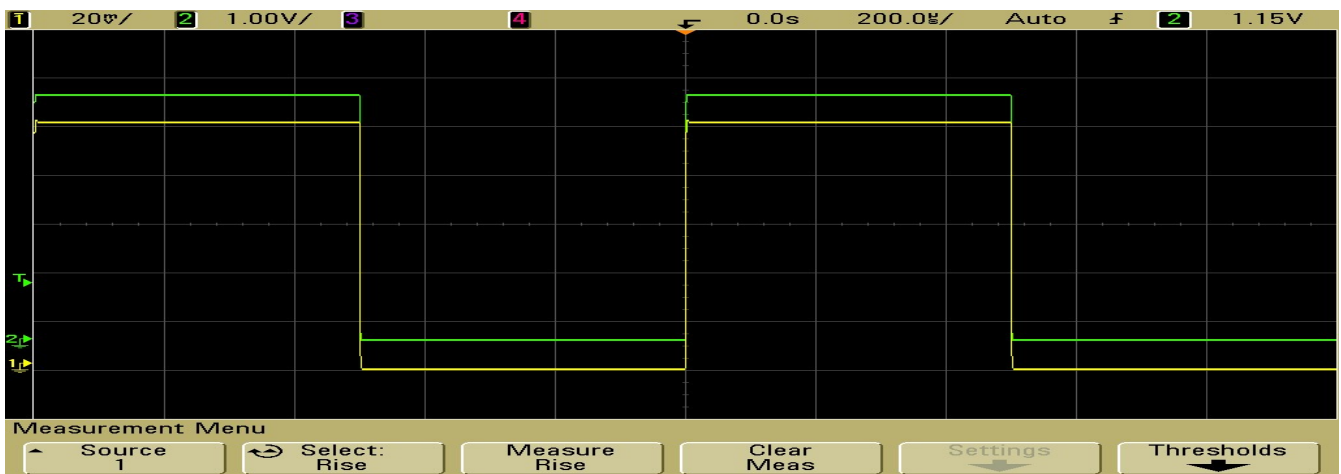
**SWITCHING SPEED OFF**



**SWITCHING SPEED ON**

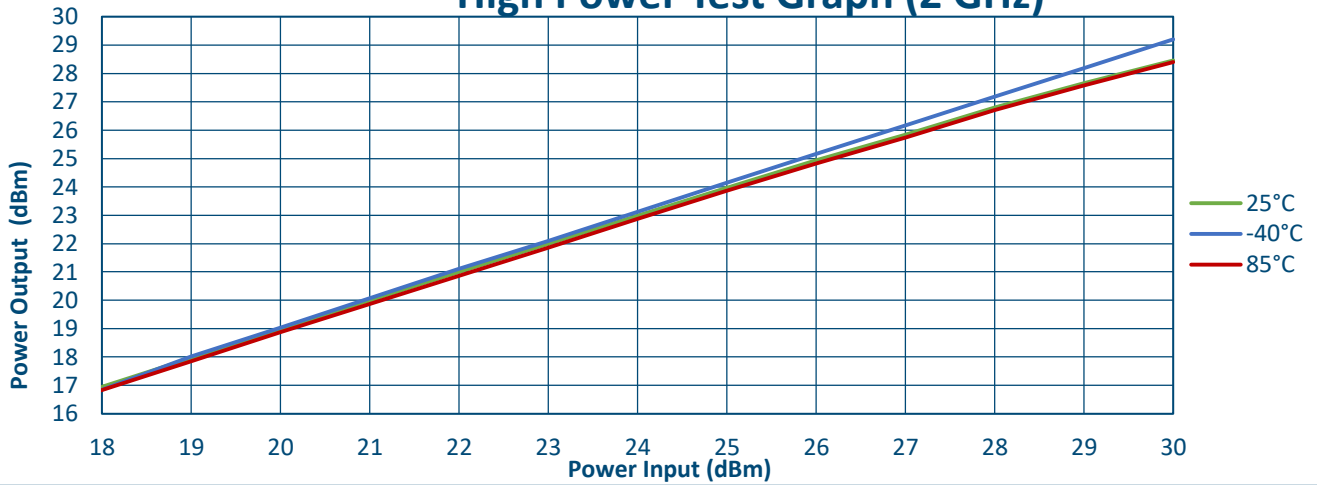


**FULL PULSE**

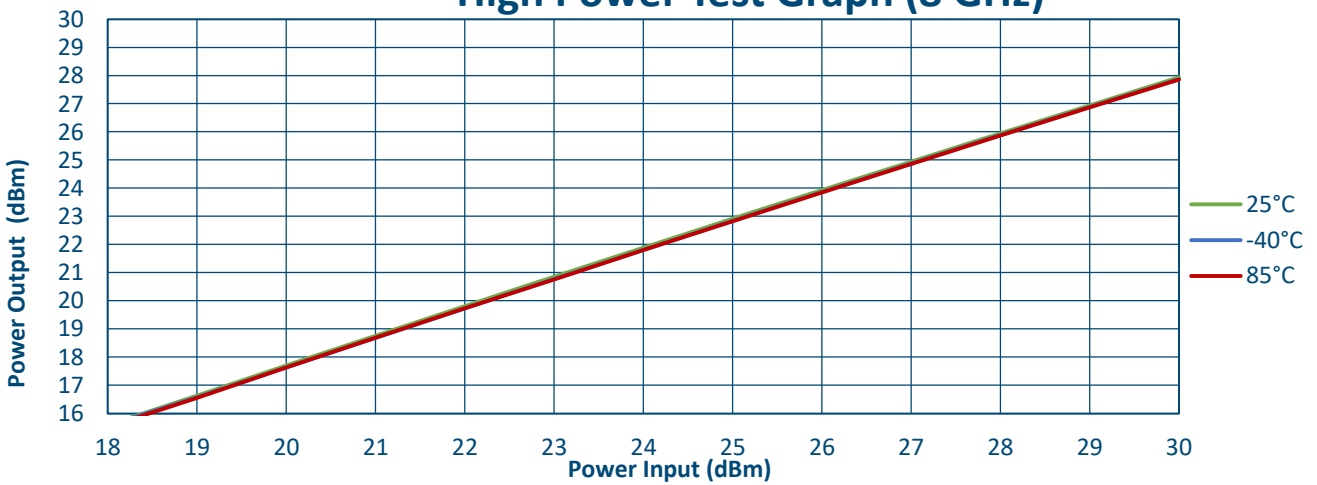


7309-A Grove Road Frederick, MD 21704 USA Phone: (301)662-5019 Fax: (301)662-1731  
Email: sales@pmi-rf.com

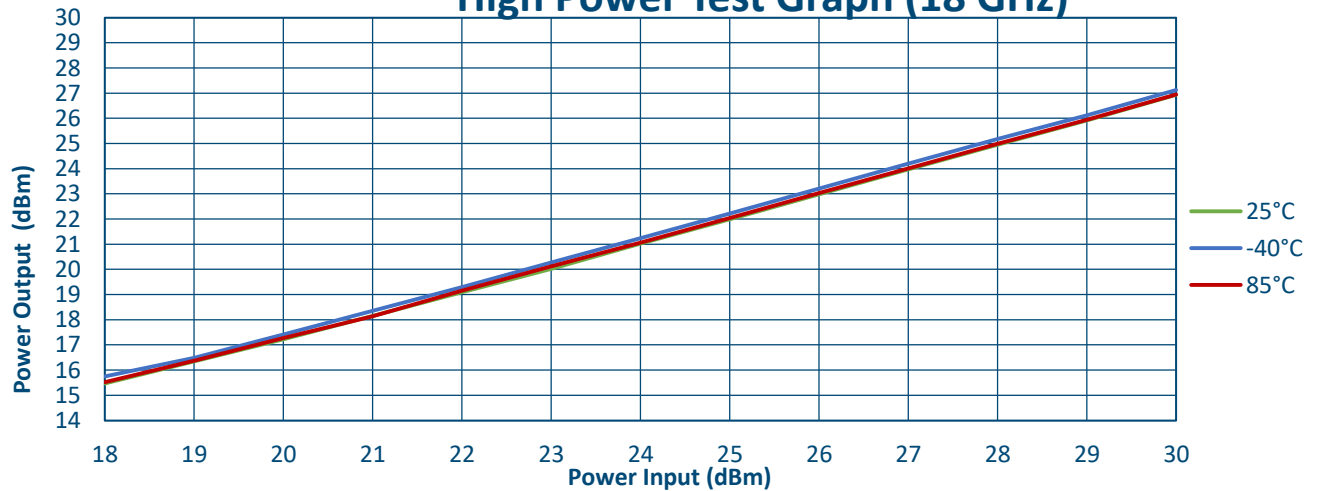
**High Power Test Graph (2 GHz)**



**High Power Test Graph (8 GHz)**



**High Power Test Graph (18 GHz)**



+33 dBm Input Pulsed 10us PW, 50% Duty Cycle

