

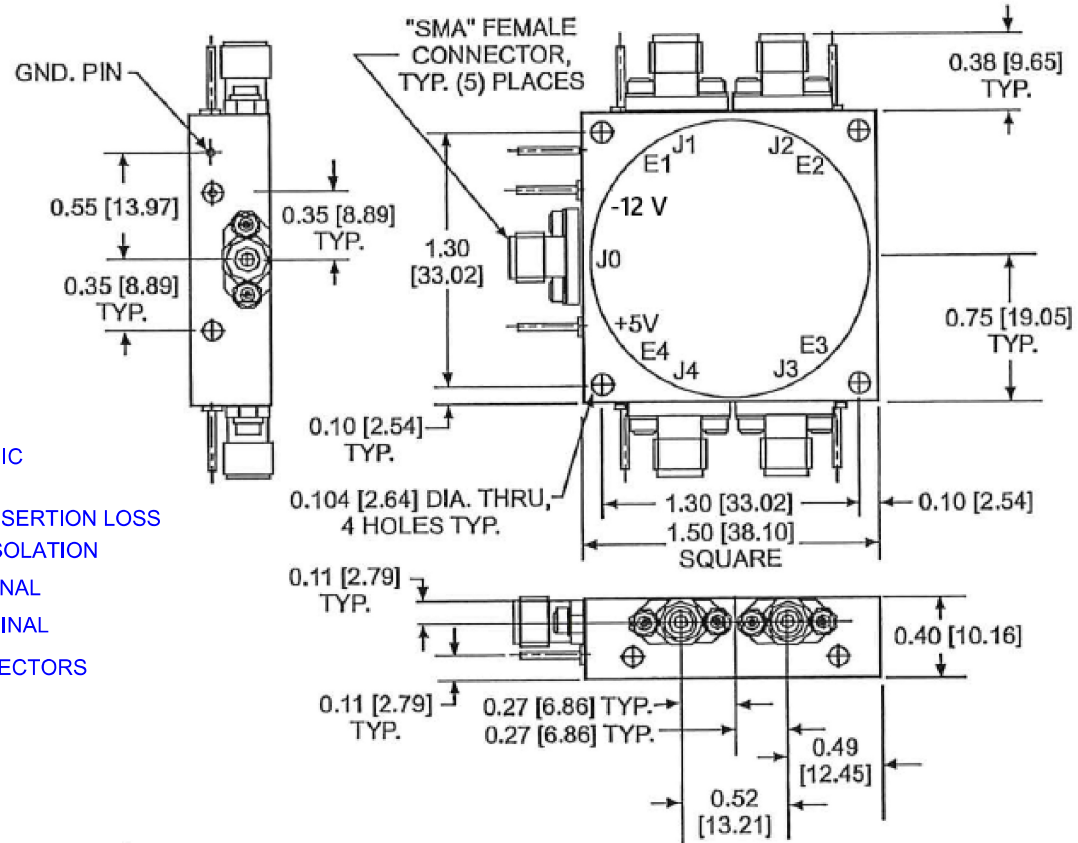
DESCRIPTION:

PMI MODEL NUMBER P4T-4G12G-65-T-SFF IS A SINGLE POLE, FOUR THROW ABSORPTIVE SWITCH DESIGNED TO OPERATE OVER THE 4 GHz TO 12 GHz FREQUENCY RANGE. THIS MODEL IS DESIGNED TO MAINTAIN LOW INSERTION LOSS, HIGH ISOLATION, AND FAST SWITCHING SPEED.

REVISIONS				
ZONE	REV.	DESCRIPTION	DATE	APPROVED
	-	PRELIMINARY	02/21/25	

SPECIFICATIONS:

- **FREQUENCY:** 4 GHz TO 12 GHz
- **INSERTION LOSS:** 2.7 dB MAXIMUM
- **ISOLATION:** 65 dB MINIMUM
- **VSWR:** 1.8:1 MAXIMUM
- **SPEED:** 150 ns TYPICAL
180 ns MAXIMUM
- **RISE/FALL TIME:** 20 ns TYPICAL
- **CONTROL:** TTL CONTROL LOGIC
NON-INVERTING
LOGIC 0 (LOW) = INSERTION LOSS
LOGIC 1 (HIGH) = ISOLATION
- **POWER SUPPLY:** +5V @ 110 mA NOMINAL
-12V @ 110 mA NOMINAL
- **RF CONNECTORS:** SMA FEMALE CONNECTORS
- **FINISH:** PAINTED BLUE



ENVIRONMENTAL RATINGS

- **TEMPERATURE:** -40°C TO +85°C (OPERATING)
-55°C TO +125°C (STORAGE)
- **HUMIDITY** MIL-STD-202, METHOD 103B COND. B
- **SHOCK** MIL-STD-202, METHOD 213B COND. B
- **VIBRATION** MIL-STD-202, METHOD 204D COND. B
- **ALTITUDE** MIL-STD-202, METHOD 105C COND. B
- **TEMPERATURE CYCLE** MIL-STD-202, METHOD 107D COND. B

PMI CONFIDENTIAL AND PROPRIETARY

PLANAR MONOLITHICS INDUSTRIES, INC.

7309-A GROVE ROAD
 FREDERICK, MARYLAND 21704 USA
 TEL: 301-662-5019 FAX: 301-662-1731
 WEBSITE: www.quantipmi.com
 E-MAIL: sales@quantipmi.com
 ISO 9001 CERTIFIED



NOTE: SPECIFICATIONS WILL VARY OVER OPERATING TEMPERATURE
 NOTE: THE ABOVE SPECIFICATIONS ARE SUBJECT TO CHANGE OR REVISION

ALL DIMENSIONS ARE IN INCHES
 TOLERANCES:
 X.XX ±0.020
 X.XXX ±0.010
 WEIGHT: 2.75 oz.

APPROVALS		DATE	TITLE		
DRAWN AG		02/21/25	PRODUCT FEATURE P4T-4G12G-65-T-SFF		
CHECKED			SIZE A	FSCM NO. 05XQ0	DWG NO. PRELIMINARY
ISSUED			SCALE N:S		SHEET 1 OF 1