

Description:

Integrated RF module that contains an input limiter, limiting amplifier, and output fixed attenuator which is designed for Military and Industrial applications. This module is supplied in a SMA connectorized housing.

This model provides the following performance.

Specifications:

Frequency Range: 1.0 to 12.0 GHz
Input Power: -61 to +15 dBm
Output Power: 10 dBm Min
+/-2.0 dB (over input power range) Nominal
Noise Figure: 8 dB Typ.
Spurious Rejection: -60 dBc Typ.
Harmonic Rejection: -10 dBc Typ.
VSWR Input/Output: 2.0:1 Max.
DC Voltage Supply: +12 to +15 VDC
DC Current Draw: 550 mA Typ.
Connectors: Diameter 0.015" - RF Pins
Finish: Gold Plated

Features:

Internal Voltage Regulation
Unconditional Stability

Available Options:

Various Package types
Various Connector types
Temperature Compensation
Hermetic Sealing
Gain and Phase Matching
MIL-STD-883 Screening Available

Environmental Ratings:

Temperature: -55 to +85 Deg. C (Operating)
-55 to +125 Deg. C (Storage)
Humidity: MIL-STD-202F, METHOD 103B COND B.
Shock: MIL-STD-202F, METHOD 213B COND B.
Altitude: MIL-STD-202F, METHOD 105C COND B.
Temperature Cycle: MIL-STD-202F, METHOD 107D COND A

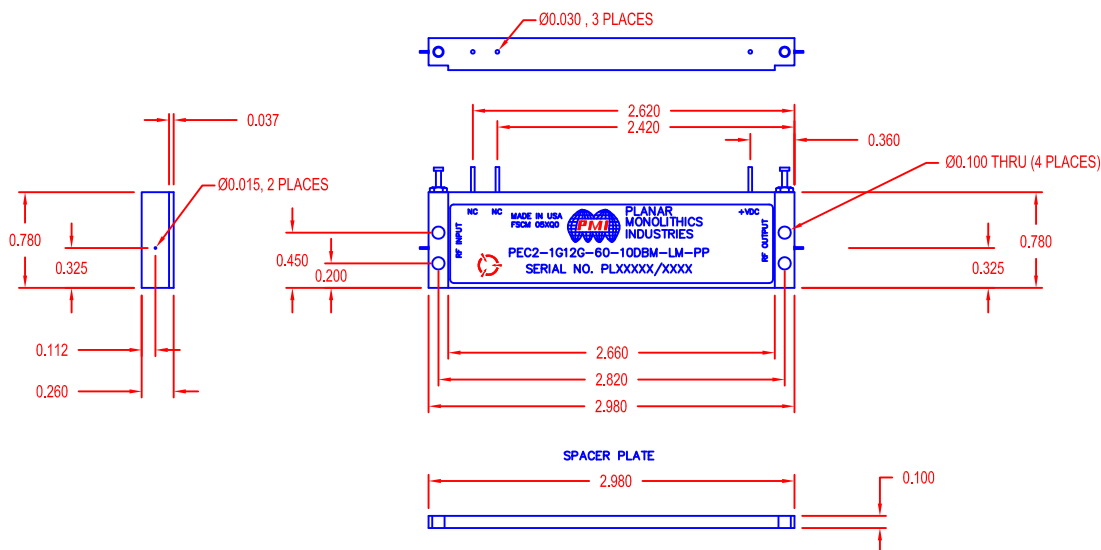
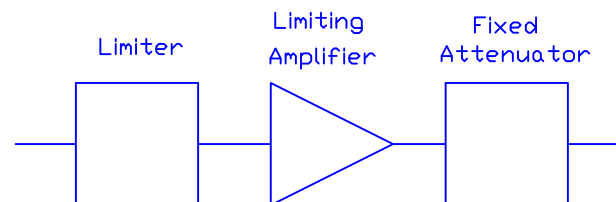
Note: The above specifications are subject to change or revision.

ALL DIMENSIONS ARE IN INCHES
TOLERANCES:
X.XX ±0.020
X.XXX ±0.010

REVISIONS				
ZONE	REV.	DESCRIPTION	DATE	APPROVED
	-	PRELIMINARY	4/13/22	

MECHANICAL OUTLINE

Functional Block Diagram



PMI CONFIDENTIAL AND PROPRIETARY

PLANAR MONOLITHICS INDUSTRIES, INC.

7311-F GROVE ROAD
FREDERICK, MARYLAND 21704 USA
TEL: 301-662-5019 FAX: 301-662-1731
WEBSITE: www.pmi-rf.com
E-MAIL: sales@pmi-rf.com
ISO 9001 CERTIFIED



APPROVALS		DATE		TITLE			
DRAWN		4/13/22		PRODUCT FEATURE			
REDRAWN				PEC2-1G12G-60-10DBM-LM-PP			
ISSUED				SIZE	FSCM NO.	DWG NO.	REV.
				A	05XQ0	PRELIMINARY	-
				SCALE	N: S	SHEET	1 OF 1