

PMI MODEL NUMBER PEC-1D575G-1AFS-SFF IS A MULTI-FUNCTION MODULE THAT PROVIDES AMPLIFICATION AND FILTERING WITHIN THE GPS L1 FREQUENCY BAND OF 1575.42MHZ. THIS MODEL PROVIDES TWO INPUT CHANNELS AND IS SWITCHABLE TO A COMMON OUTPUT. THIS MODULE WAS DESIGNED TO HANDLE EXPOSURE TO EXTREME ENVIRONMENTAL CONDITIONS INCLUDING AIRBORNE AND ROCKET ENVIRONMENTS.

REVISIONS				
ZONE	REV.	DESCRIPTION	DATE	APPROVED
	A1	ORIGINAL RELEASE	1/21/09	
	B1	Updated To Cust. # 38687 Rev A	3/14/11	
	C1	ECN # 13-0099	07/31/13	

SPECIFICATIONS:

OPERATION FREQUENCY:.....1575.42MHZ

SMALL SIGNAL GAIN 0dB Nominal

NOISE FIGURE..... 1.8dB Typ.

INPUT POWER FOR 1dB COMPRESSION -25dBm Typ.

MAXIMUM INPUT POWER 0dBm CW

VSWR 2.0:1 Max.

FILTER REJECTION @ 1228MHZ & 1800MHZ -65dBc Min.

PORT TO PORT SWITCH ISOLATION 40dB Min.

SWITCHING SPEED 200 nsec Max.

TTL CONTROL

"LOW" LV ANTENNA TO Rx

"HIGH" TOWER ANTENNA TO Rx

DC POWER 160 mA @ +15Vdc
±1Vdc Max.

SEALING HERMETIC

FINISH GRAY PAINT (BOTTOM GOLD PLATED)

ENVIRONMENTAL RATINGS

TEMPERATURE-55°C TO +85°C (OPERATING)
-65°C TO +125°C (STORAGE)

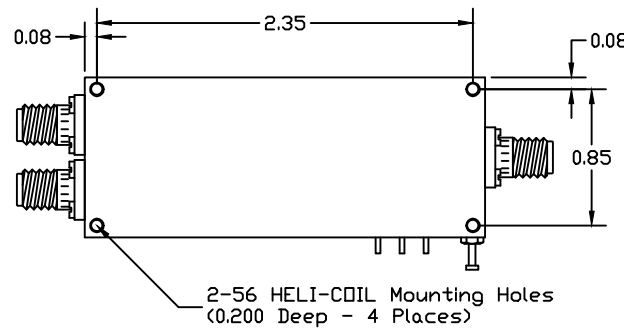
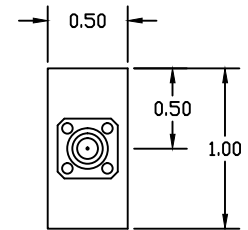
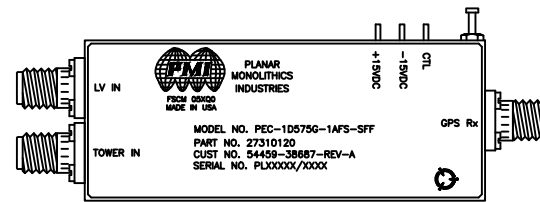
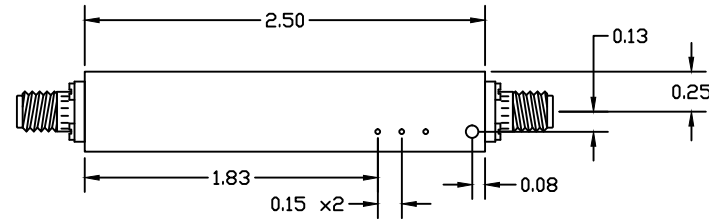
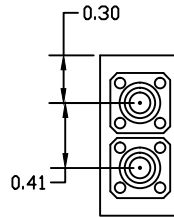
HUMIDITY MIL-STD-202F, METHOD 103B, COND. B

VIBRATION MIL-STD-883G, METHOD 2007, COND A

ACCELERATION CONSTANT ACCELERATION 10g IN Y1 AXIS HOLDING FOR 1 MIN.

TEMPERATURE CYCLE MIL-STD-883G, METHOD 1010, COND. B

BURN-IN 80 HOURS @ +85°C (DC POWER APPLIED)



PMI CONFIDENTIAL AND PROPRIETARY

PLANAR MONOLITHICS INDUSTRIES, INC.

5715 INDUSTRY LANE UNIT 11
FREDERICK, MARYLAND 21704 USA
TEL: 301-662-3819 FAX: 301-662-1731
WEBSITE: www.planarmonolithicsindustries.com
E-MAIL: sales@planarmonolithics.com

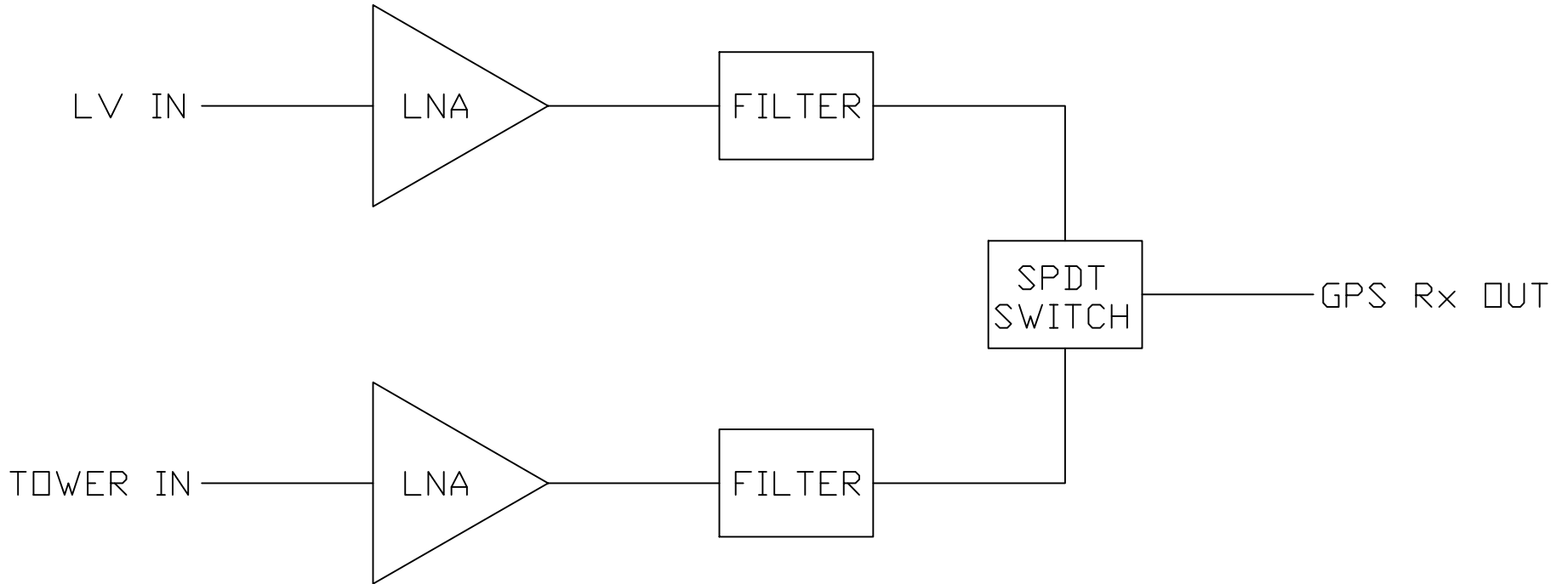


ALL DIMENSIONS ARE IN INCHES
TOLERANCES:
X.XX ±0.020
X.XXX ±0.010

APPROVALS		DATE	TITLE		
DRAWN <i>KM</i>		1/21/09	PRODUCT FEATURE PEC-1D575G-1AFS-SFF GPS MODULE L1 BAND		
CHECKED			SIZE A	FSCM NO. 05XQ0	DWG NO. 27010125-B
ISSUED			SCALE N:S		REV. C1
					SHEET 1 of 2

REVISIONS				
ZONE	REV.	DESCRIPTION	DATE	APPROVED
	A1	ORIGINAL RELEASE	1/21/09	
	B1	Updated To Cust. # 38687 Rev A	3/14/11	
	C1	ECN # 13-0099	07/31/13	

BLOCK DIAGRAM



PMI CONFIDENTIAL AND PROPRIETARY

PLANAR MONOLITHICS INDUSTRIES, INC.
 7311-F GROVE ROAD
 FREDERICK, MARYLAND 21704 USA
 TEL: 301-662-5019 FAX: 301-662-1731
 WEBSITE: www.pmi-rf.com
 E-MAIL: sales@pmi-rf.com
 ISO 9001:2000 CERTIFIED



ALL DIMENSIONS ARE IN INCHES
 TOLERANCES:
 X.XX ±0.020
 X.XXX ±0.010

APPROVALS		DATE	TITLE		
DRAWN		07/31/13	PRODUCT FEATURE		
CHECKED			PEC-1D575G-1AFS-SFF		
ISSUED			GPS MODULE L1 BAND		
SIZE	FSCM NO.	DWG NO.	REV.		
A	05XQ0	27010125-B	C1		
SCALE N:S			SHEET 2 OF 2		