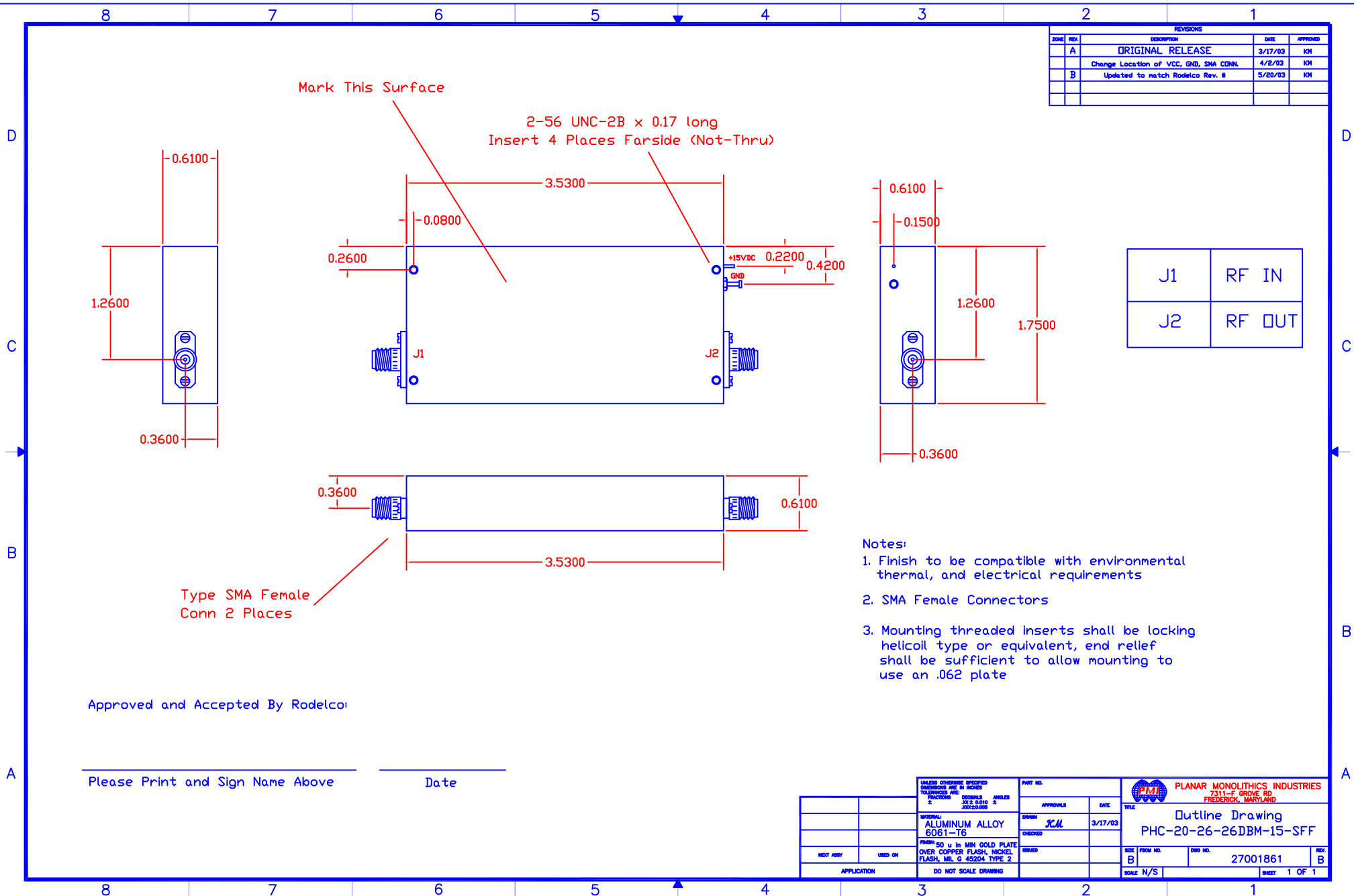


REVISIONS				
ZONE	REV.	DESCRIPTION	DATE	APPROVED
	A	ORIGINAL RELEASE	3/17/03	IKH
		Change Location of VCC, GND, SMA CONN.	4/2/03	IKH
	B	Updated to match Rodelco Rev. #	5/20/03	IKH

J1	RF IN
J2	RF OUT



- Notes:
1. Finish to be compatible with environmental thermal, and electrical requirements
  2. SMA Female Connectors
  3. Mounting threaded inserts shall be locking helicoil type or equivalent, end relief shall be sufficient to allow mounting to use an .062 plate

Approved and Accepted By Rodelco:

\_\_\_\_\_  
Please Print and Sign Name Above                      Date

UNLESS OTHERWISE SPECIFIED DIMENSIONS ARE IN INCHES TOLERANCES ARE: FRACTIONS DECIMALS ANGLES ± .005 ± .0010 ± .0050		PART NO.	PLANAR MONOLITHICS INDUSTRIES 7311-F GROVE RD FREDERICK, MARYLAND	
MATERIAL: ALUMINUM ALLOY 8061-T6	FINISH: 50 u in MIN GOLD PLATE OVER COPPER FLASH, NICKEL FLASH, MIL. G. 45204 TYPE 2	APPROVALS	DATE	TITLE
NEXT ASSY	USED ON	DESIGNED <i>SCM</i>	3/17/03	Outline Drawing PHC-20-26-26DBM-15-SFF
APPLICATION	DO NOT SCALE DRAWING	CHECKED		SIZE FROM NO. B
		REVISED		DWG NO. 27001861
				REV. B
				SCALE N/S
				SHEET 1 OF 1