



**SUMMARY TEST DATA
ON
P16T-100M50G-100-T-I**

PL21769/1743

Customer: _____ Tested By: A. Lopez / S. Palacio
SO No: _____ Temperature: +25°C
Model No: P16T-100M50G-100-T-I Date: 10/30/17
Serial No: PL21769/1743 Drawing No: 27630760 Rev: A2

TEST. ITEM NO	PARAMETERS	SPECIFIED VALUE	TEST RESULTS	QA QC
1	Frequency Range	0.1 to 50 GHz	0.1 to 50 GHz	PMI QA 2
2	Insertion Loss	6.5 dB Typ (0.1 to 18 GHz) 10.0 dB Typ (18 to 40 GHz) 20.0 dB Max (40 to 50 GHz)	12.5 dB 17.0 dB 20.0 dB (See Plot)	
3	In/Out VSWR	2.2:1 Typ (0.1 to 18 GHz) 2.5:1 Typ (18 to 40 GHz) 3.0:1 Typ (40 to 50 GHz)	2.5:1 3.0:1 3.5:1 (See Plot)	
4	Isolation	70 dB Typ (0.1 to 1 GHz) 100 dB Typ (1 to 18 GHz) 100 dB Typ (18 to 40 GHz) 80 dB Typ (40 to 50 GHz)	84 dB 92 dB 72 dB 61 dB (See Plot)	
5	Input Power	+20 dBm CW Max	Pass	
6	Switching Speed	100 ns Max	90 ns See Plot	
7	DC Supply	+5 VDC @ 800 mA Max -5 VDC @ 720 mA Max	+5 VDC @ 710 mA -5 VDC @ 680 mA	PMI QA 2

QA/QC Approval: _____

PMI
QA 2

Date: _____

10/30/17

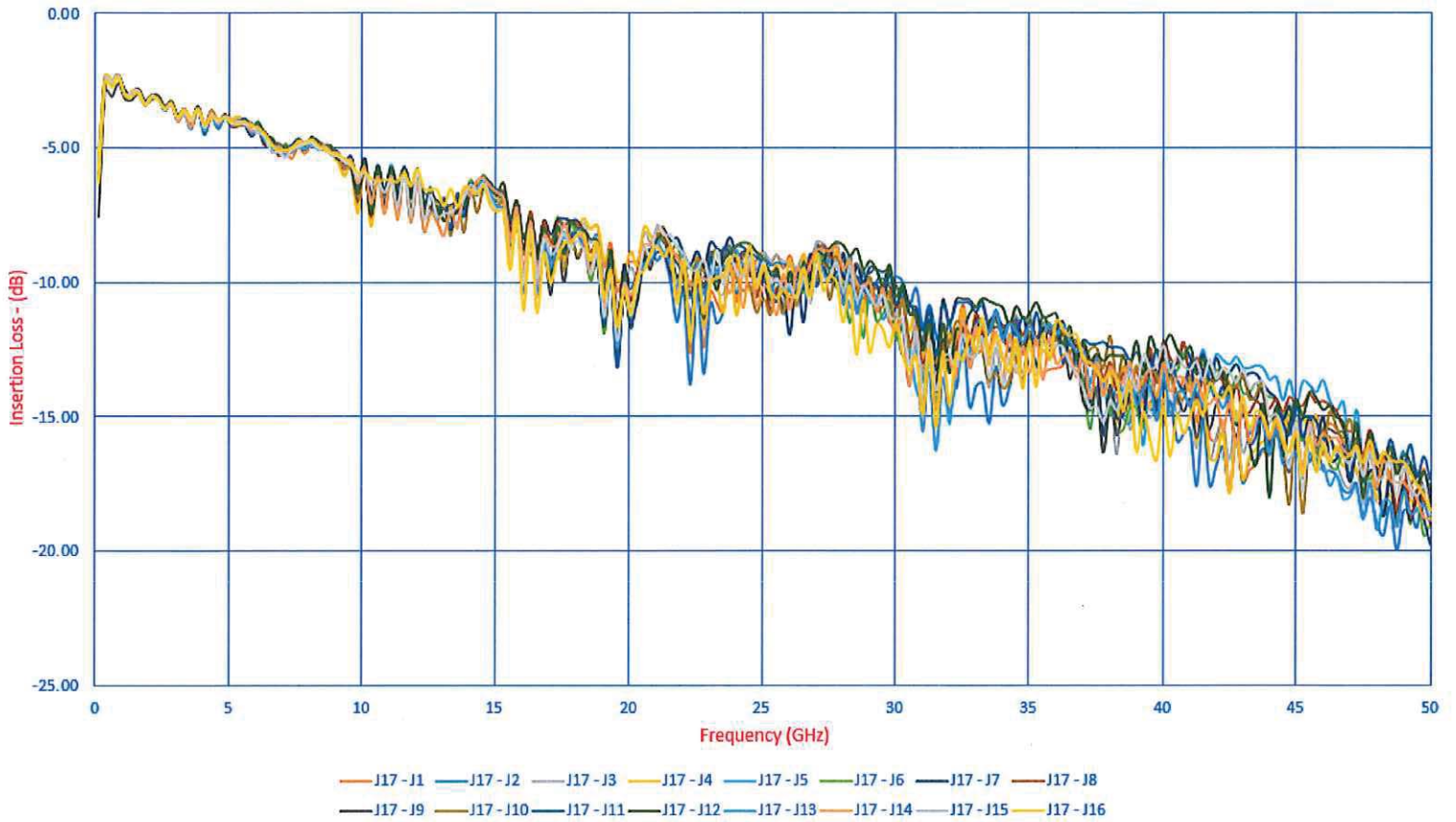
7311-F Grove Road Frederick, MD 21704 USA Phone: (301)662-5019 Fax: (301)662-1731
Email: sales@pmi-rf.com



**SUMMARY TEST DATA
ON
P16T-100M50G-100-T-I**

PL21769/1743

INSERTION LOSS vs FREQUENCY



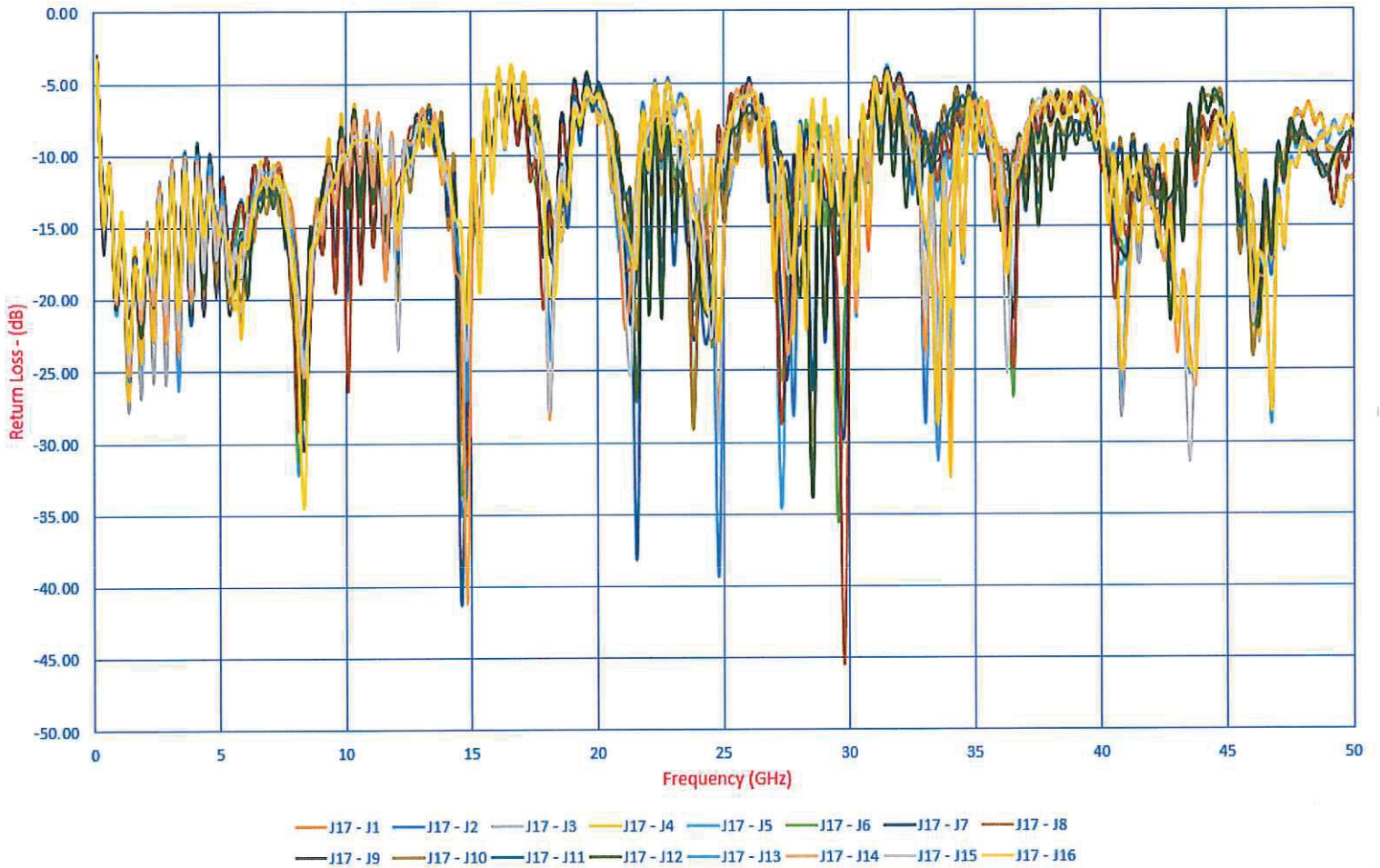
7311-F Grove Road Frederick, MD 21704 USA Phone: (301)662-5019 Fax: (301)662-1731
Email: sales@pmi-rf.com



**SUMMARY TEST DATA
ON
P16T-100M50G-100-T-I**

PL21769/1743

INPUT RETURN LOSS vs FREQUENCY

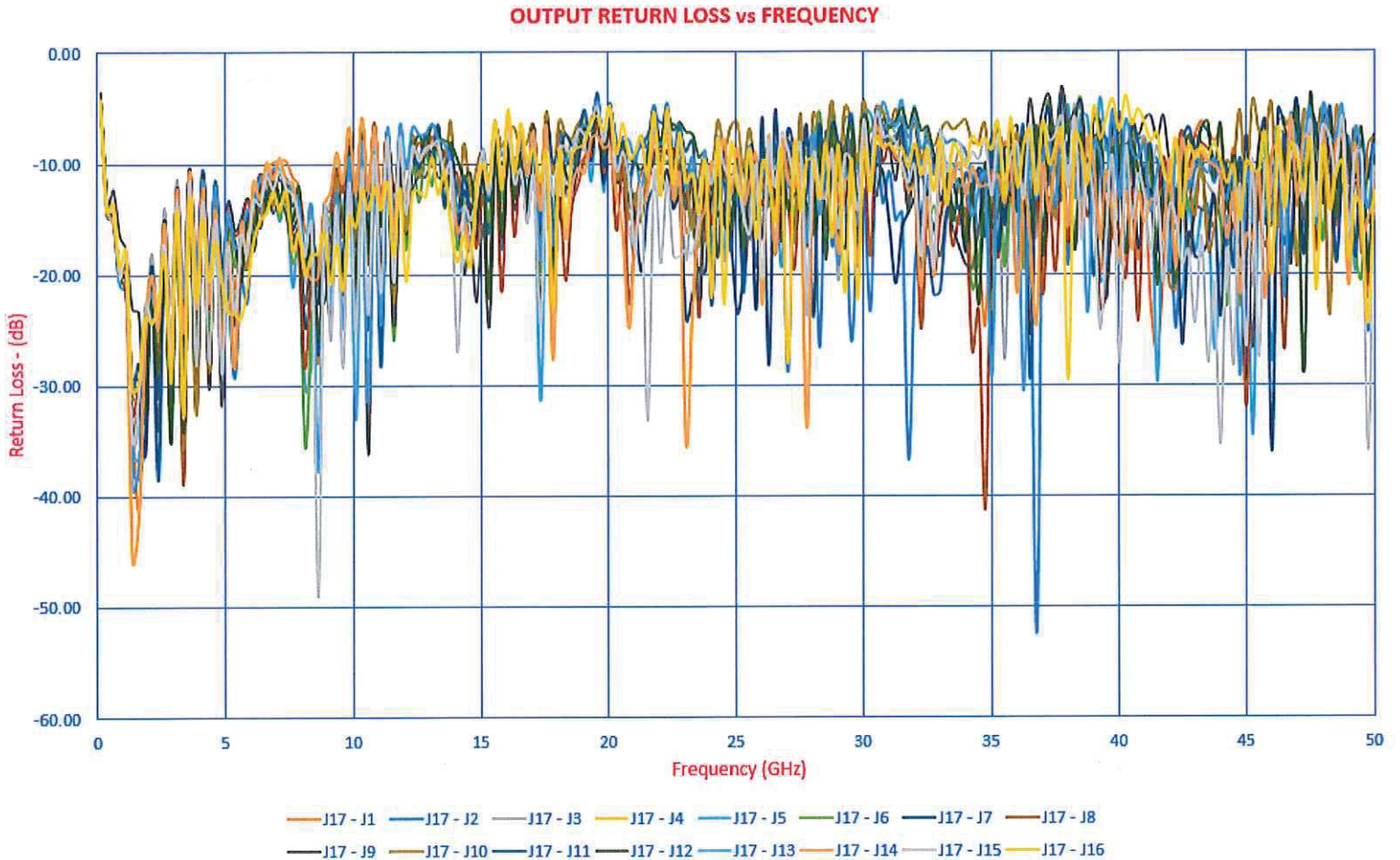


7311-F Grove Road Frederick, MD 21704 USA Phone: (301)662-5019 Fax: (301)662-1731
Email: sales@pmi-rf.com



**SUMMARY TEST DATA
ON
P16T-100M50G-100-T-I**

PL21769/1743

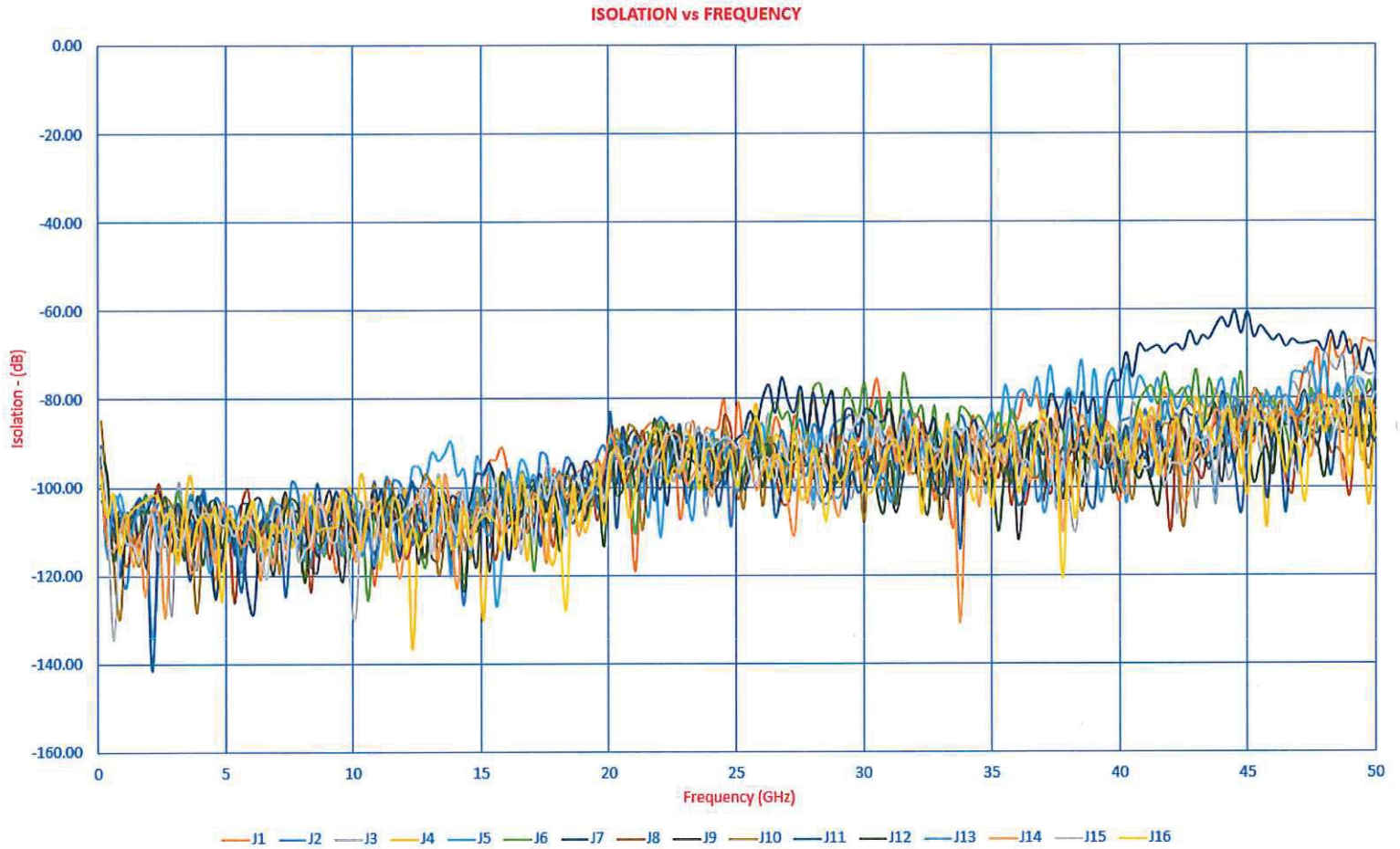


7311-F Grove Road Frederick, MD 21704 USA Phone: (301)662-5019 Fax: (301)662-1731
Email: sales@pmi-rf.com



**SUMMARY TEST DATA
ON
P16T-100M50G-100-T-I**

PL21769/1743



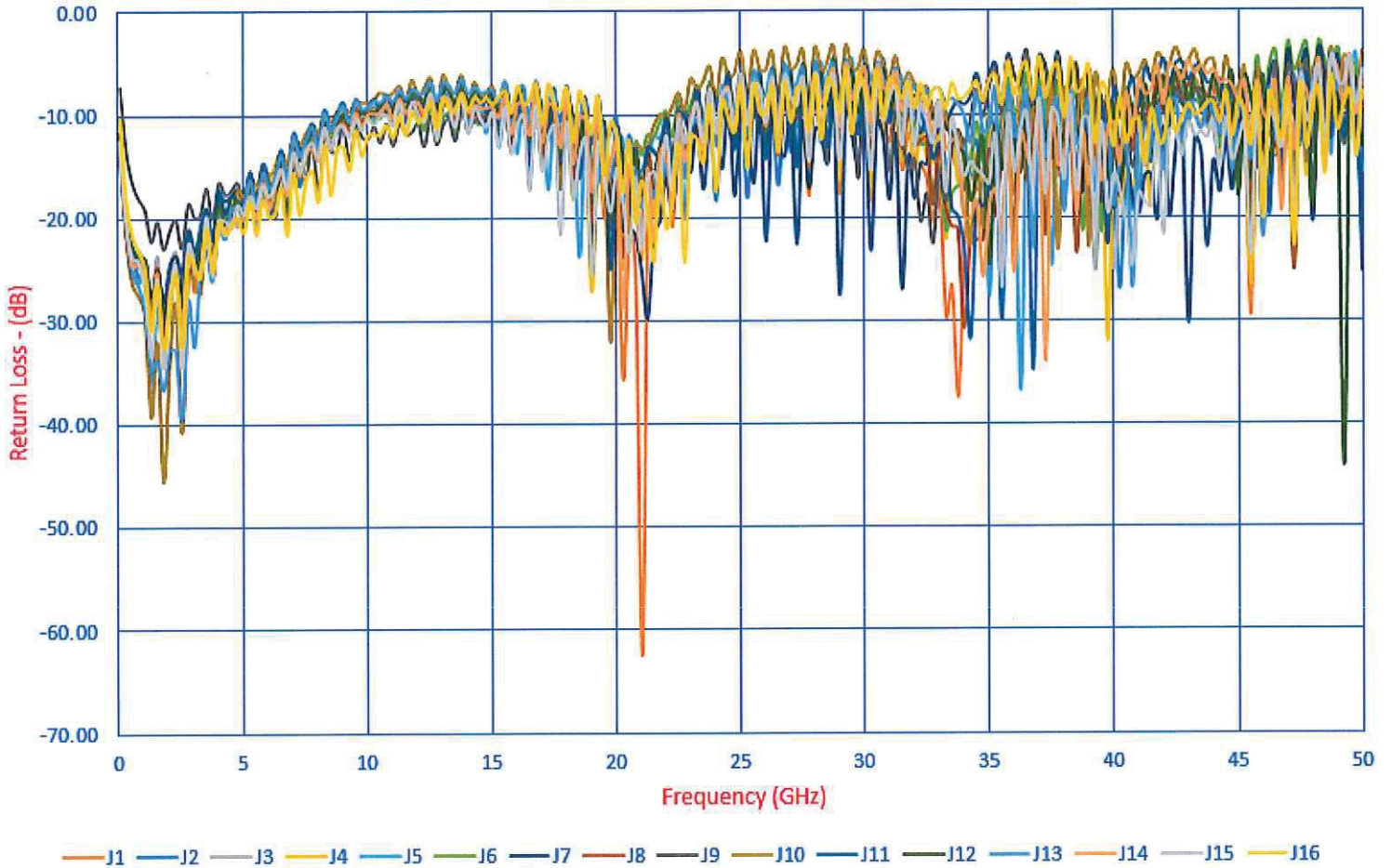
7311-F Grove Road Frederick, MD 21704 USA Phone: (301)662-5019 Fax: (301)662-1731
Email: sales@pmi-rf.com



**SUMMARY TEST DATA
ON
P16T-100M50G-100-T-I**

PL21769/1743

OFF RETURN LOSS vs FREQUENCY



7311-F Grove Road Frederick, MD 21704 USA Phone: (301)662-5019 Fax: (301)662-1731
Email: sales@pmi-rf.com



SUMMARY TEST DATA
ON
P16T-100M50G-100-T-I

PL21769/1743

Switching Speed
ON – 100ns per Div.



Green Trace = TTL Signal
Yellow Trace = RF Signal



**SUMMARY TEST DATA
ON
P16T-100M50G-100-T-I**

PL21769/1743

Switching Speed
OFF – 100ns per Div.



Green Trace = TTL Signal
Yellow Trace = RF Signal



SUMMARY TEST DATA
ON
P16T-100M50G-100-T-I

PL21769/1743

Switching Speed
Full Pulse – 200ns per Div.



Green Trace = TTL Signal
Yellow Trace = RF Signal



**SUMMARY TEST DATA
ON
P16T-100M50G-100-T-I**

PL21769/1743

Video Transients – 100ns & 200mV per Div.



Green Trace = TTL Signal
Blue Trace = Video Transients