



**SUMMARY TEST DATA  
ON  
P8T-0R518G-60-T-515-SFF-MSN**

Customer: \_\_\_\_\_  
SO No: \_\_\_\_\_  
Model No: **P8T-0R518G-60-T-515-SFF-MSN**  
Serial No: **PL22397/1814**

Tested By: **K. Mansfield**  
Temperature: **+25°C**  
Date: **10/31/2018**  
Drawing No: **27633940** Rev: **A1**

TEST ITEM NO.	PARAMETERS	SPECIFIED VALUE	TEST RESULTS	QA QC
1	Frequency Range:	0.5 GHz to 18 GHz	<b>0.5 GHz to 18 GHz</b>	
2	Insertion Loss:	4.5 dB	<b>4.5 dB (See Plot)</b>	
3	Isolation:	60 dB	<b>67.3 dB (See Plot)</b>	
4	VSWR:	2.0:1	<b>2:1 (See Plot)</b>	
5	Speed:	Rise: 10 ns Typ. 15 ns Max. Fall: 10 ns Typ. 15 ns Max. Delay ON: 75 ns Typ. 100 ns Max. Delay OFF: 75 ns Typ. 100 ns Max.	<b>Rise: 12.7ns Fall: 14.4ns Delay ON: 78.5ns Delay OFF: 44ns (See Typical Characteristics)</b>	
6	Power Input:	(CW) +20 dBm (Standard) +10 dBm (High Speed)	<b>Pass</b>	
7	Survival Power:	1 Watt CW, 10 Watts Peak 1 µsec	<b>Pass</b>	
8	Control:	Logic "0" = ON Logic "1" = OFF	<b>Pass</b>	
9	Power Supply:	+5 VDC @ 400 mA Max. -15 VDC @ 100 mA Max.	<b>283 mA 72 mA</b>	

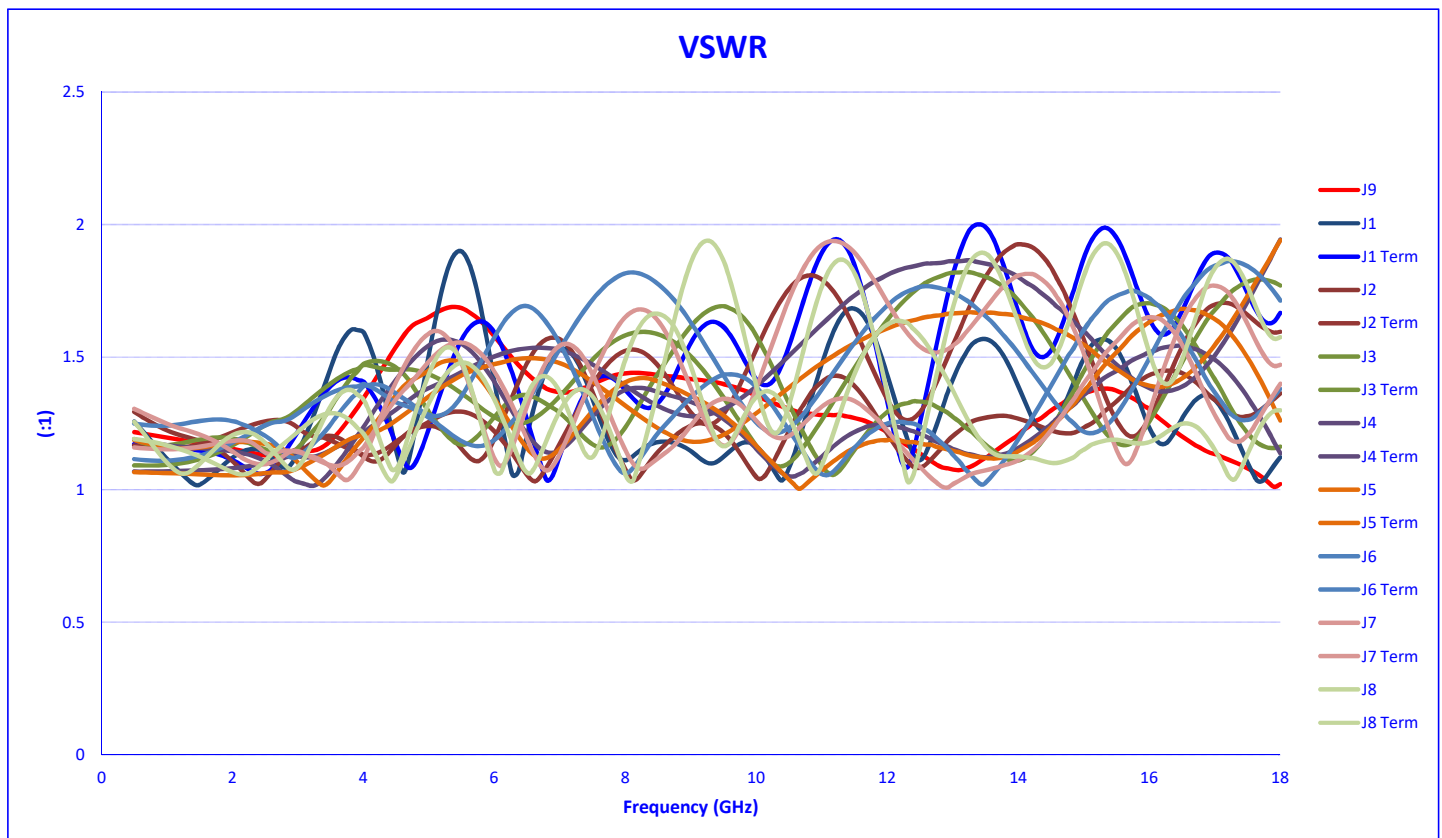
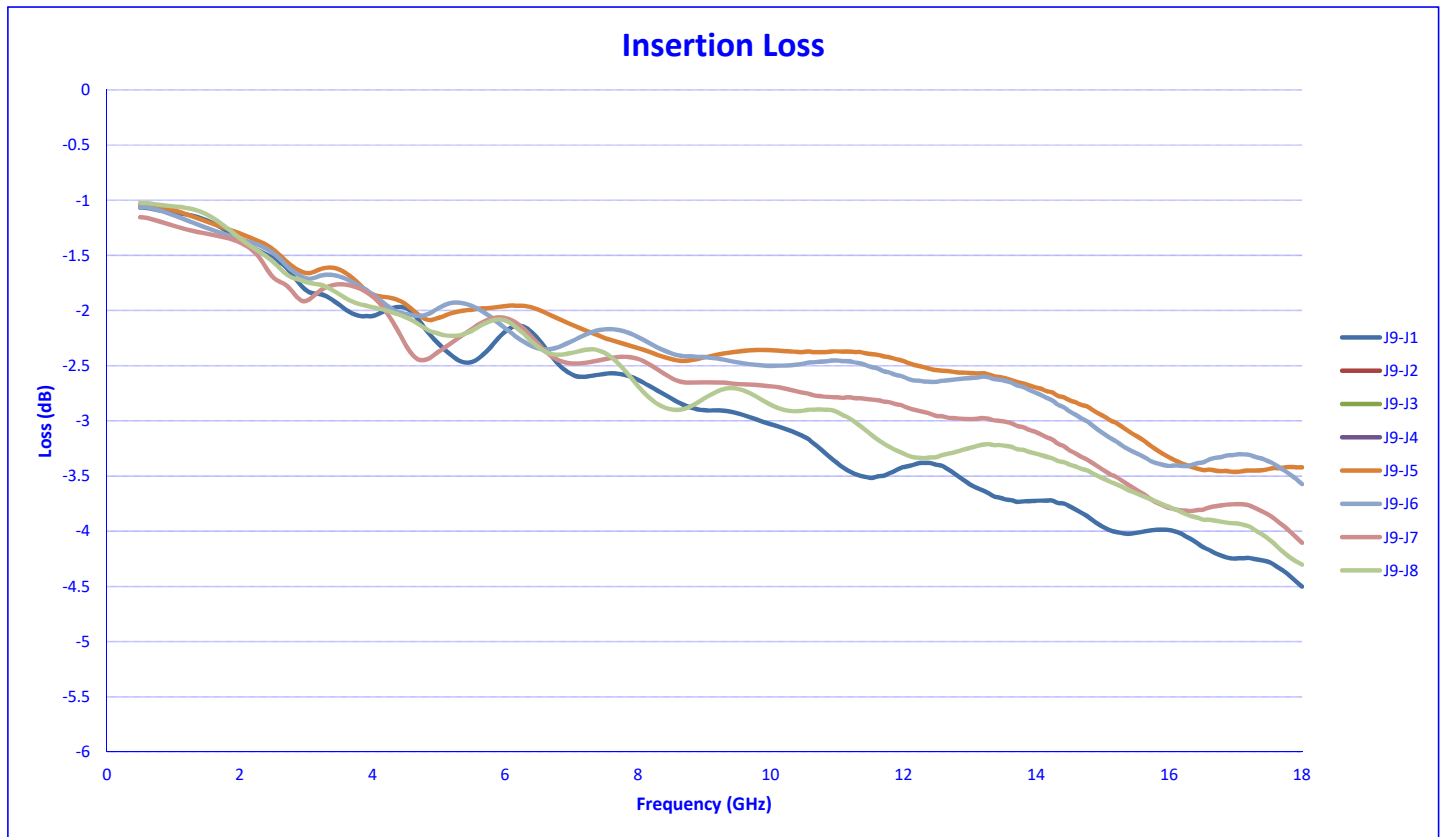
QA/QC Approval: \_\_\_\_\_

Date: \_\_\_\_\_



# SUMMARY TEST DATA ON P8T-0R518G-60-T-515-SFF-MSN

PL22397/1814





# SUMMARY TEST DATA ON P8T-0R518G-60-T-515-SFF-MSN

PL22397/1814

