



**SUMMARY TEST DATA
ON
P4T-10G40G-60-T-292FF**

Customer: _____
 SO No: _____
 Model No: P4T-10G40G-60-T-292FF
 Serial No: PL22486/1816

Tested By: L. McGraw
 Temperature: 25 Degrees C
 Date: 4/26/2018
 Drawing No: 27618748 Rev: A2

| TEST ITEM NO. | PARAMETERS | SPECIFIED VALUE | | | TEST RESULTS | QA QC |
|---------------|--------------------------|--|----|------------------|--|-------|
| 1 | Frequency Range: | 10 to 40 GHz | | | 10 to 40 GHz | |
| 2 | Insertion Loss: | 6.0 dB Max. | | | 5.7 dB (See Graph) | |
| 3 | Insertion Loss Flatness: | ±1.5 dB Over Full Band | | | ±1.5 dB (See Plot) | |
| 4 | Isolation: | 60 dB Min. | | | 64 dB (See Graph) | |
| 5 | VSWR: | 2.0:1 Max. | | | 2:1 In/Out 1.9:1 Out/Off (See Graph) | |
| 6 | Power Handling: | >200 mW CW (+23 dBm CW) | | | Pass (See Typical Characteristics) | |
| 7 | Switching Speed: | 10% to 90% <100 ns | | | Pass (See Typical Characteristics) | |
| 8 | DC Supply: | +5 VDC @ 100 mA Max. -5 VDC @ 100 mA Max. | | | 75 mA 43 mA | |
| 9 | Control Signal: | E1 | E2 | Function | Pass | |
| | | 0 | 0 | J1-J2 "Low Loss" | | |
| | | 0 | 1 | J1-J3 "Low Loss" | | |
| | | 1 | 0 | J1-J4 "Low Loss" | | |
| | | 1 | 1 | J1-J5 "Low Loss" | | |

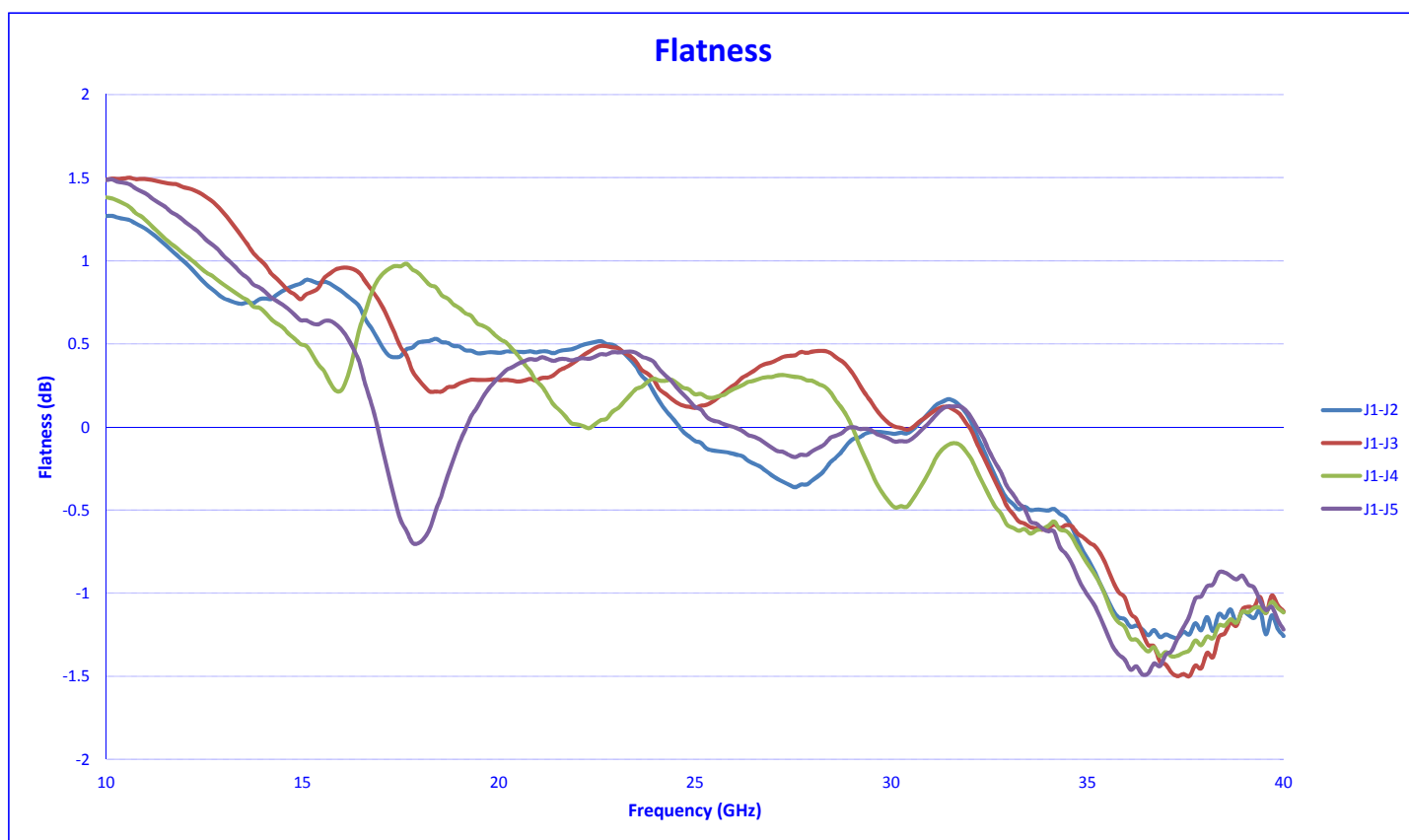
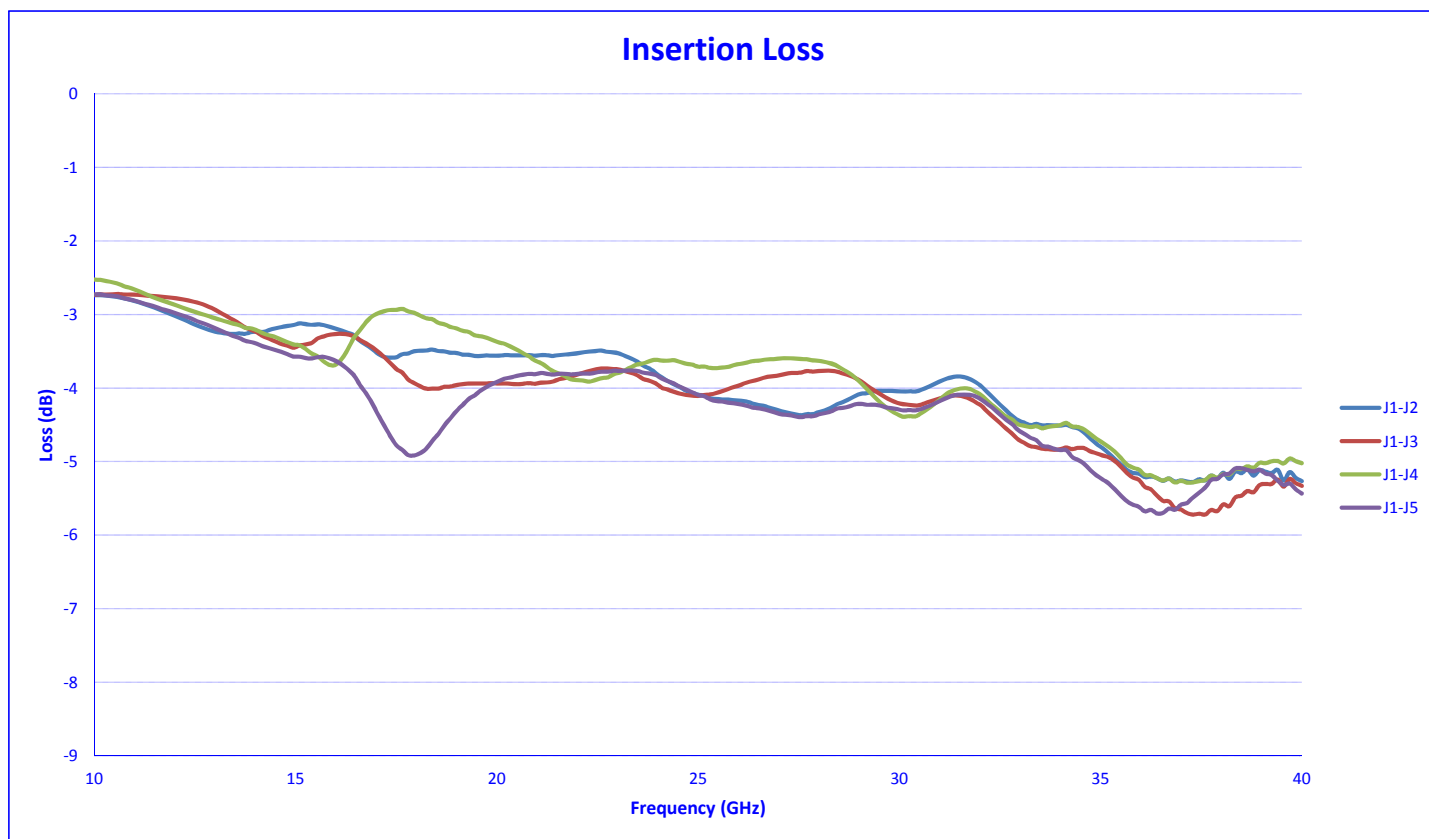
QA/QC Approval: _____

Date: _____



SUMMARY TEST DATA ON P4T-10G40G-60-T-292FF

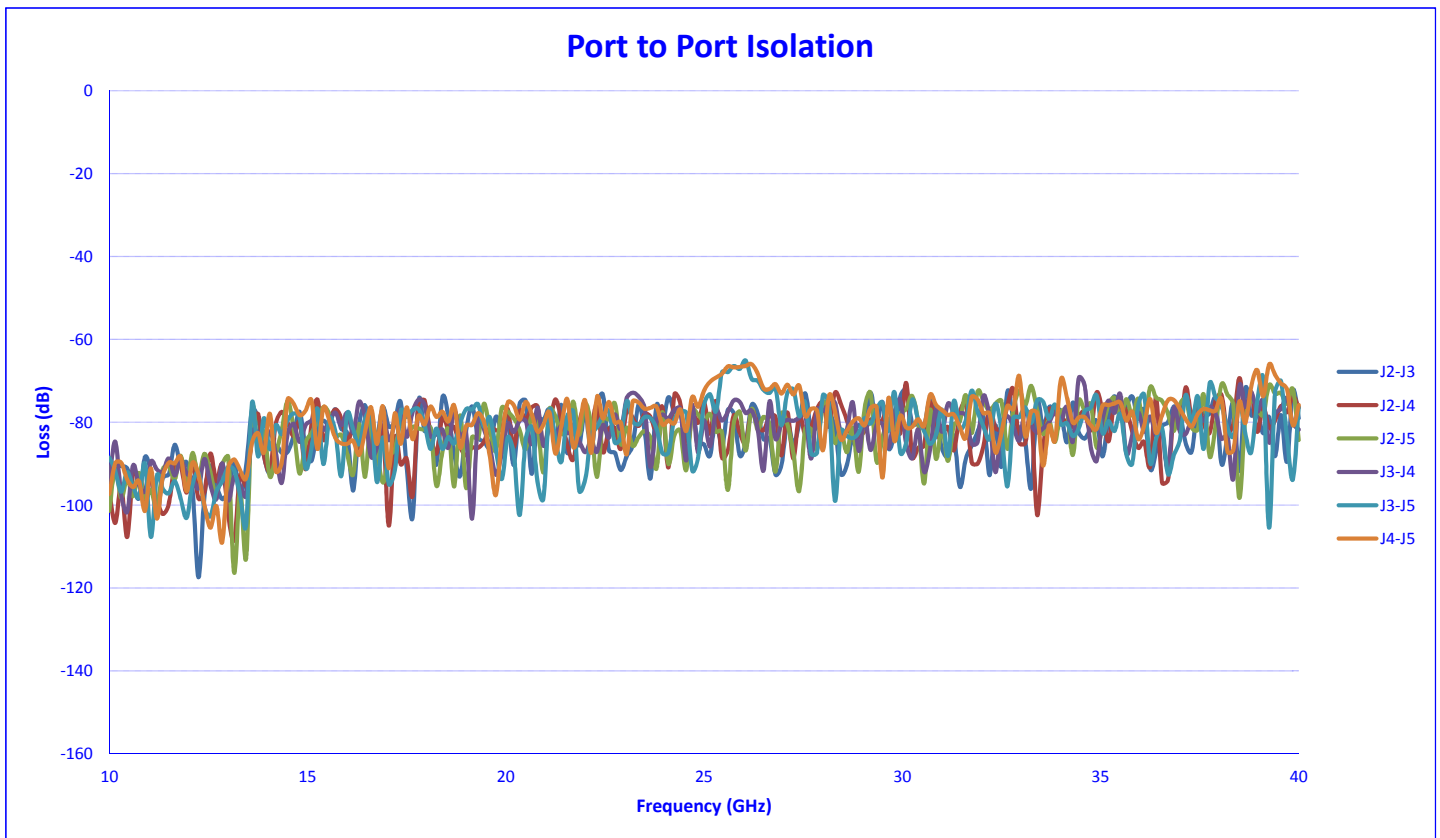
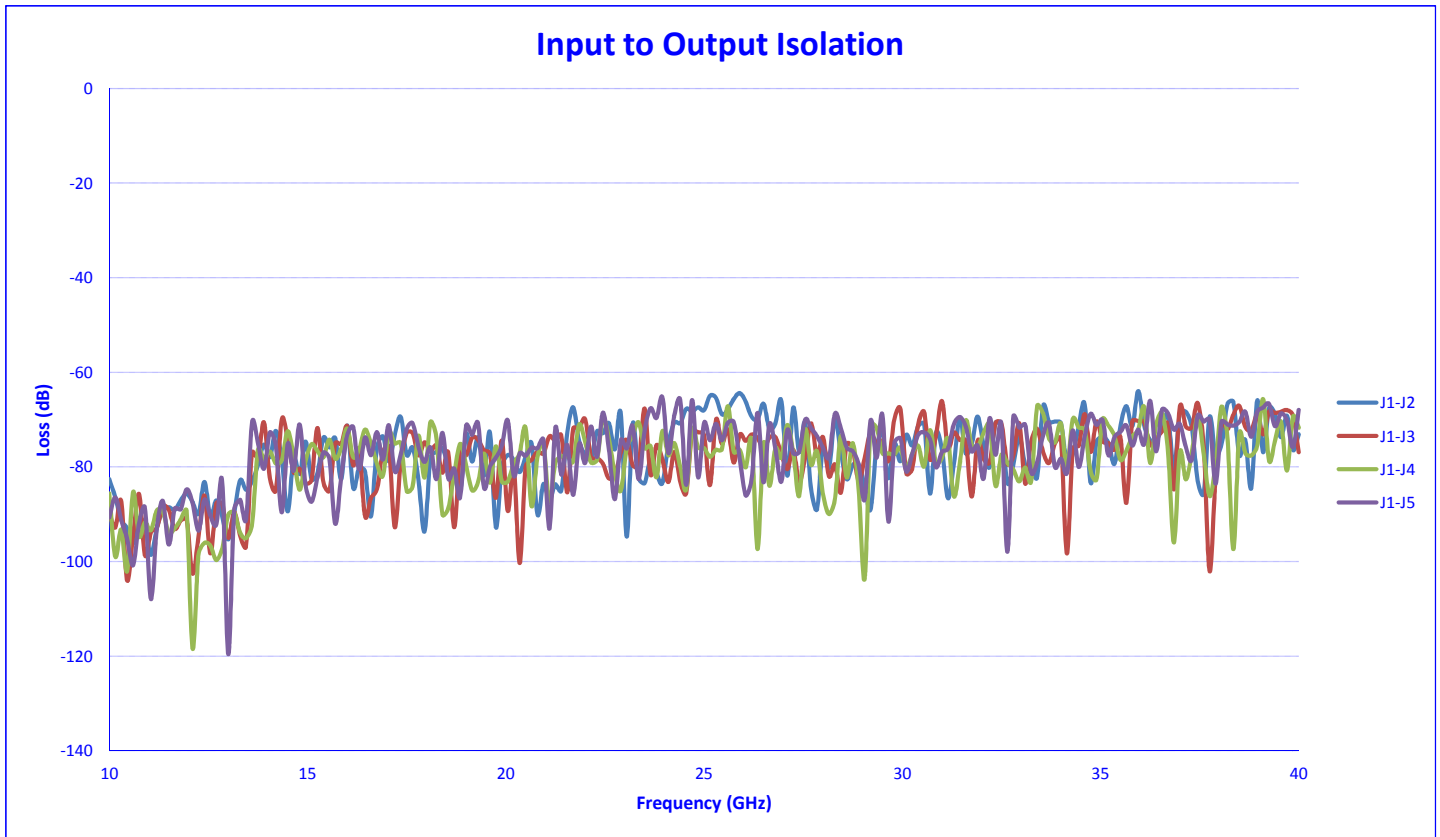
PL22486/1816





SUMMARY TEST DATA ON P4T-10G40G-60-T-292FF

PL22486/1816





SUMMARY TEST DATA ON P4T-10G40G-60-T-292FF

PL22486/1816

