



**TEMPERATURE TEST DATA
ON
PLO-9G-CD-1**

PL24000/1849

Customer: _____	Tested By: <u>E. Kretz & S. Palacio</u>
SO No: _____	Temperature: <u>+25°C</u>
Model No: <u>PLO-9G-CD-1</u>	Date: <u>1/2/19</u>
Serial No: <u>PL24000/1849</u>	Drawing No: <u>27622744</u> Rev: <u>A1</u>

TEST. ITEM NO	PARAMETERS	SPECIFIED VALUE	TEST RESULTS	QA QC	
1	Output Frequency (fo):	9.0GHz	9.0GHz	PMI QA1	
2	Output Power:	+21dBm Min +25dBm Max	+21.07 dBm (See Plot)		
3	Reference (fi):	100 ±0.01 MHz 0 ±3dBm	100 MHz		
4	VSWR:	< 1.5:1 (ALL PHASES)	1.4:1		
5	Spurious:	-60dBc Min	-94.51 dBc (See Plot)		
6	Harmonics:	-25dBc Min	-25.01 dBc (See Plot)		
7	Phase Noise:	20 log(fo/fi)+6dB Typ. @ 10KHz – 100KHz -100 dBc/Hz Min @ 100KHz -120 dBc/Hz Min @ 1MHz	-102.33 dBc @ 100KHz -120.44 dBc @ 1MHz (See Plots)		
8	Lock Alarm:	TTL "H" : Out Of Lock TTL "L" : Lock	PASS		
9	Primary Power:	+12 to +15.5 Vdc @ 500mA Max -12 to -15.5 Vdc @ 100mA Max	281 mA @ +12 to +15.5 Vdc 22 mA @ -12 to -15.5 Vdc		
10	Weight:	250g (10 oz) Max	3.3 oz		PMI QA1

QA/QC Approval: PMI QA1 Date: 1/2/19

7311-F Grove Road Frederick, MD 21704 USA Phone: (301)662-5019 Fax: (301)662-1731
Email: sales@pmi-rf.com

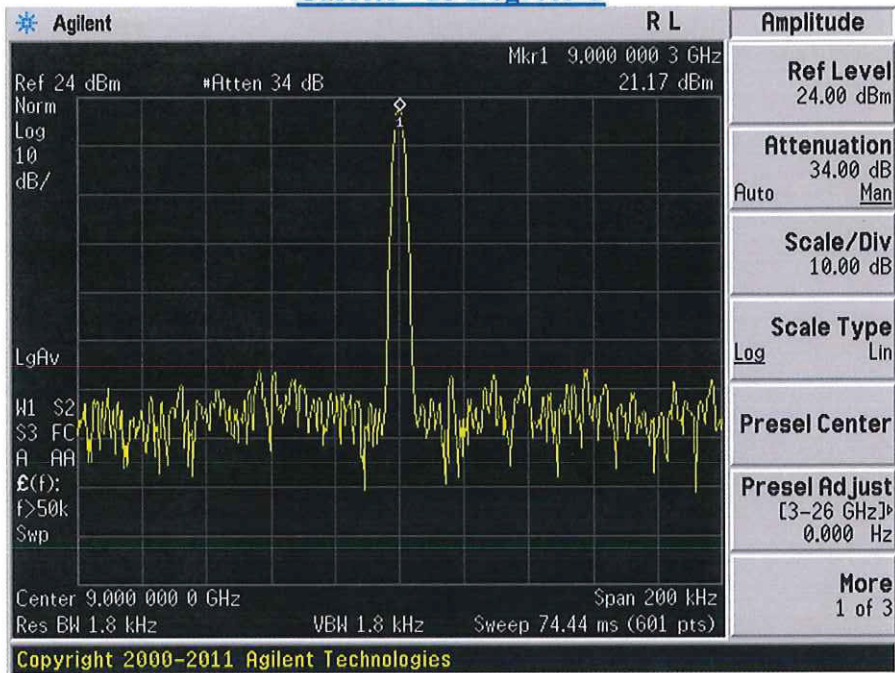


**TEMPERATURE TEST DATA
ON
PLO-9G-CD-1**

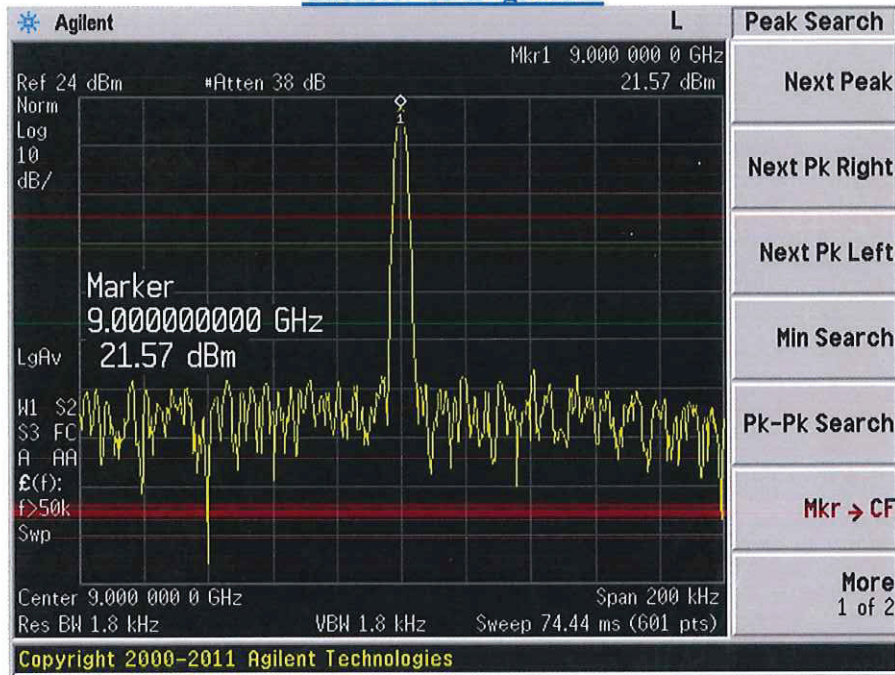
PL24000/1849



Carrier +25 Degrees C



Carrier -15 Degrees C



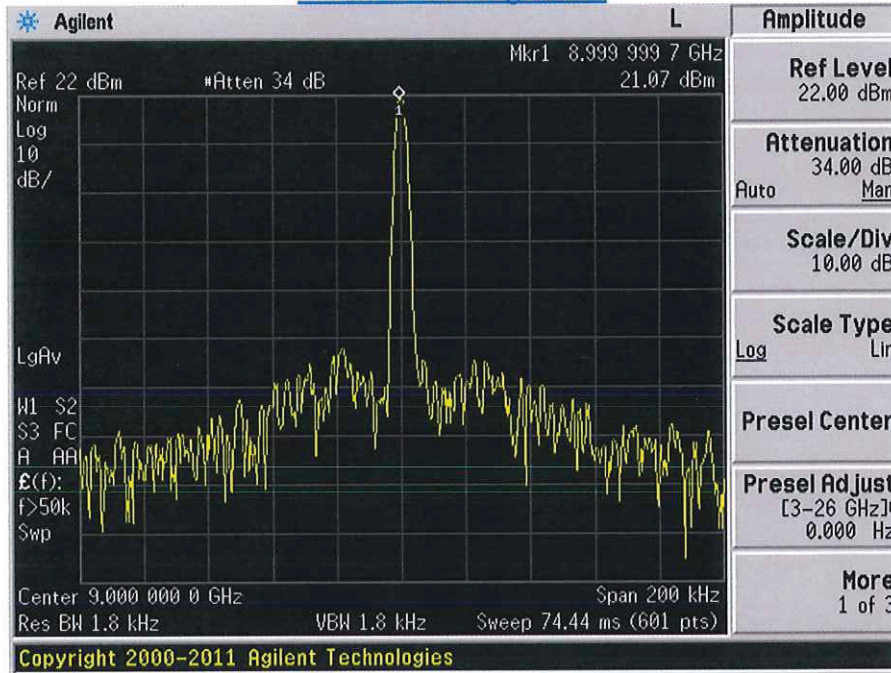


**TEMPERATURE TEST DATA
ON
PLO-9G-CD-1**

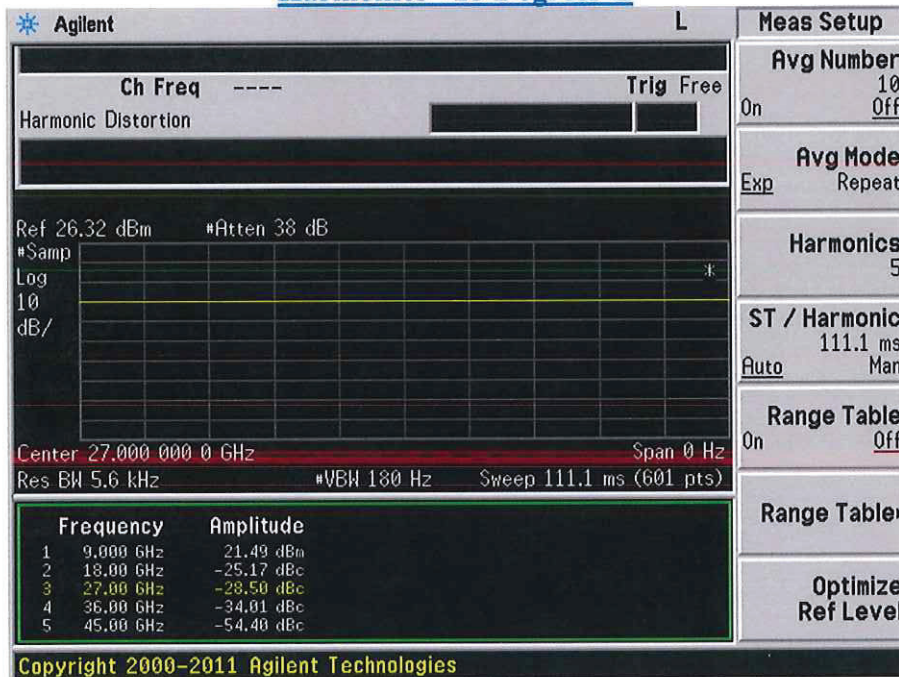
PL24000/1849



Carrier +85 Degrees C



Harmonics +25 Degrees C

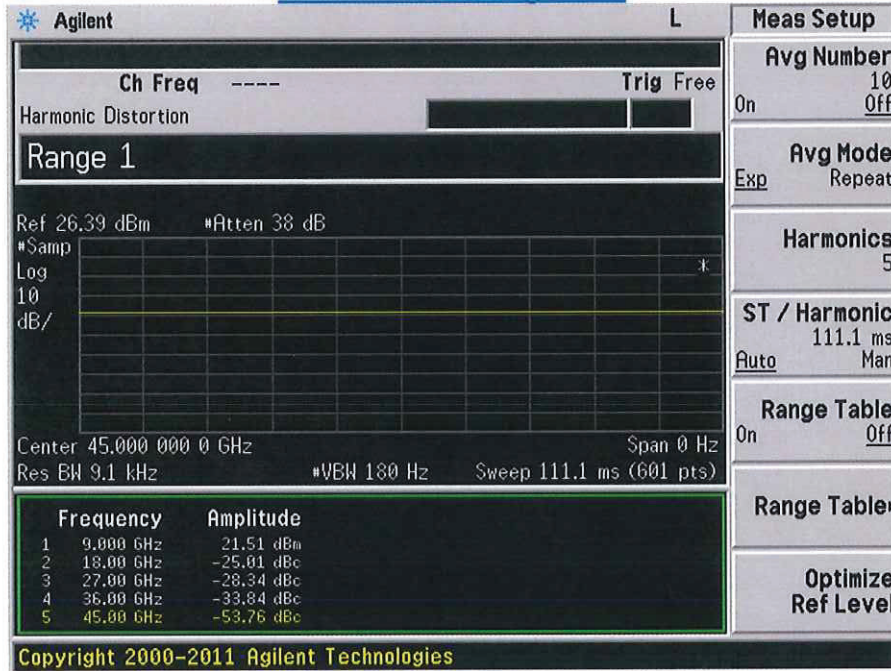




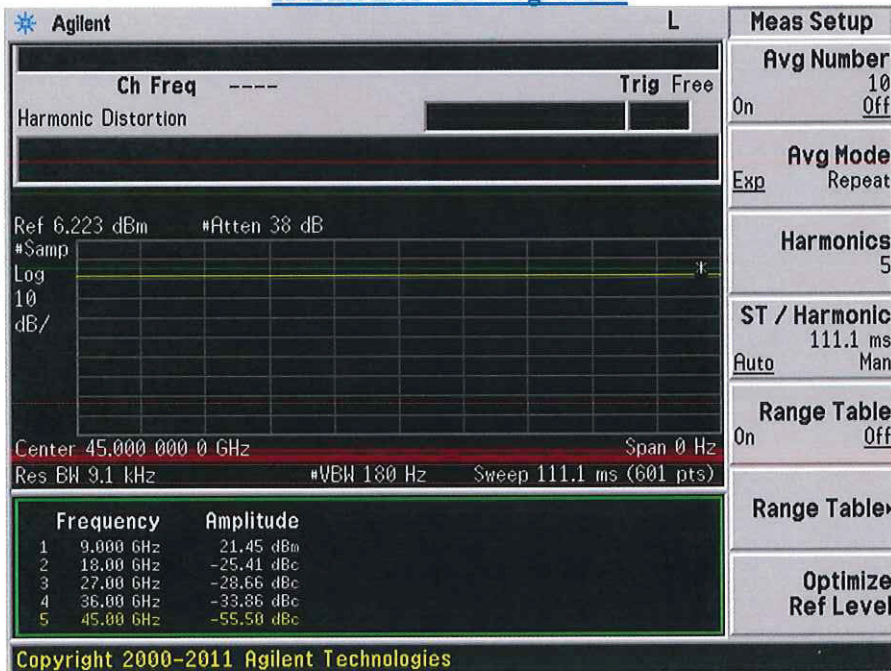
**TEMPERATURE TEST DATA
ON
PLO-9G-CD-1**

PL24000/1849

Harmonics -15 Degrees C



Harmonics +85 Degrees C

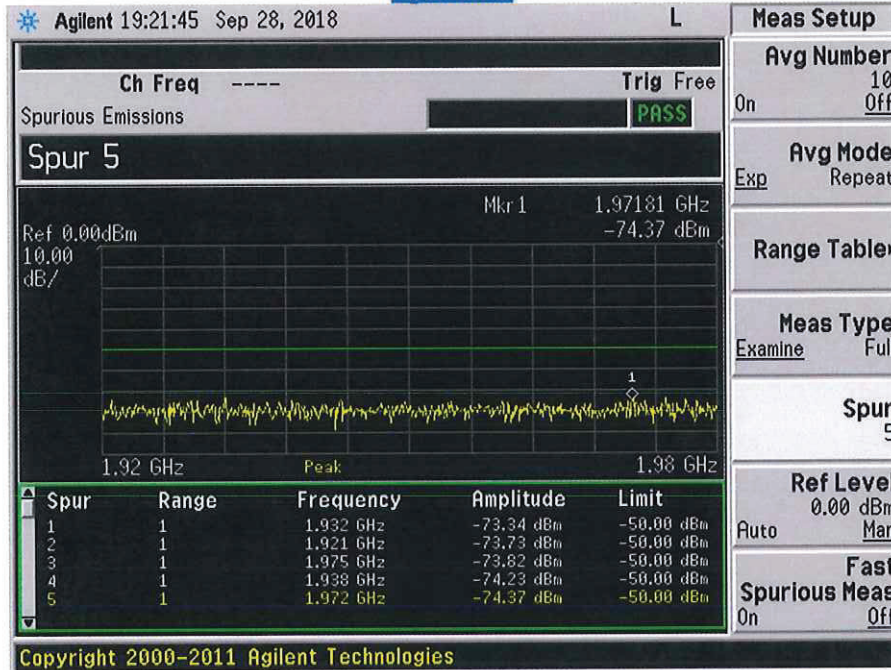




**TEMPERATURE TEST DATA
ON
PLO-9G-CD-1**

PL24000/1849

Spurious



Phase Noise

