



SUMMARY TEST DATA ON P4T-500M40G-60-T-55-292FF-SP Rev. B

Customer: _____
 SO No: _____
 Model No: P4T-500M40G-60-T-55-292FF-SP Rev. B
 Serial No: PL26433/1935

Tested By: A. Lopez
 Temperature: 25 Degrees C
 Date: 8/30/2019
 Drawing No: 26913624-B Rev: B2

| TEST ITEM NO. | PARAMETERS | SPECIFIED VALUE | TEST RESULTS | QA QC |
|---------------|--------------------|-----------------------------------------------------------------------------------|------------------------------------|------------|
| 1 | Frequency Range: | 0.5 - 40 GHz | 0.5 - 40 GHz | PMI QA1 |
| 2 | Isolation: | 60 dB Min | 69.6 dB See Plot | |
| 3 | Insertion Loss: | 8.0 dB Max | 5.18 dB See Plot | |
| 4 | VSWR: In/Out | 2.5:1 Max 2.0:1 Typ | 2.47 :1 See Plot | |
| 5 | Input Power | +20 dBm CW Max | Pass (See Typical Characteristics) | |
| 6 | Survival Power | 1 W Peak 1 μ s | Pass (See Typical Characteristics) | |
| 7 | RF Switching Speed | Rise: 15 ns Max Fall: 15 ns Max Delay On: 50 ns Max Delay Off: 50 ns Max | Pass (See Typical Characteristics) | |
| 8 | DC Supply: | +5 VDC @ 250 mA Max | 127 mA | |
| | | -5 VDC @ 100 mA Max | 67 mA | |

CONTROL SIGNAL

| E1 | E2 | Function |
|----|----|------------------|
| 0 | 0 | J1-J2 "Low Loss" |
| 0 | 1 | J1-J3 "Low Loss" |
| 1 | 0 | J1-J4 "Low Loss" |
| 1 | 1 | J1-J5 "Low Loss" |

QA/QC Approval: _____

PMI
QA1

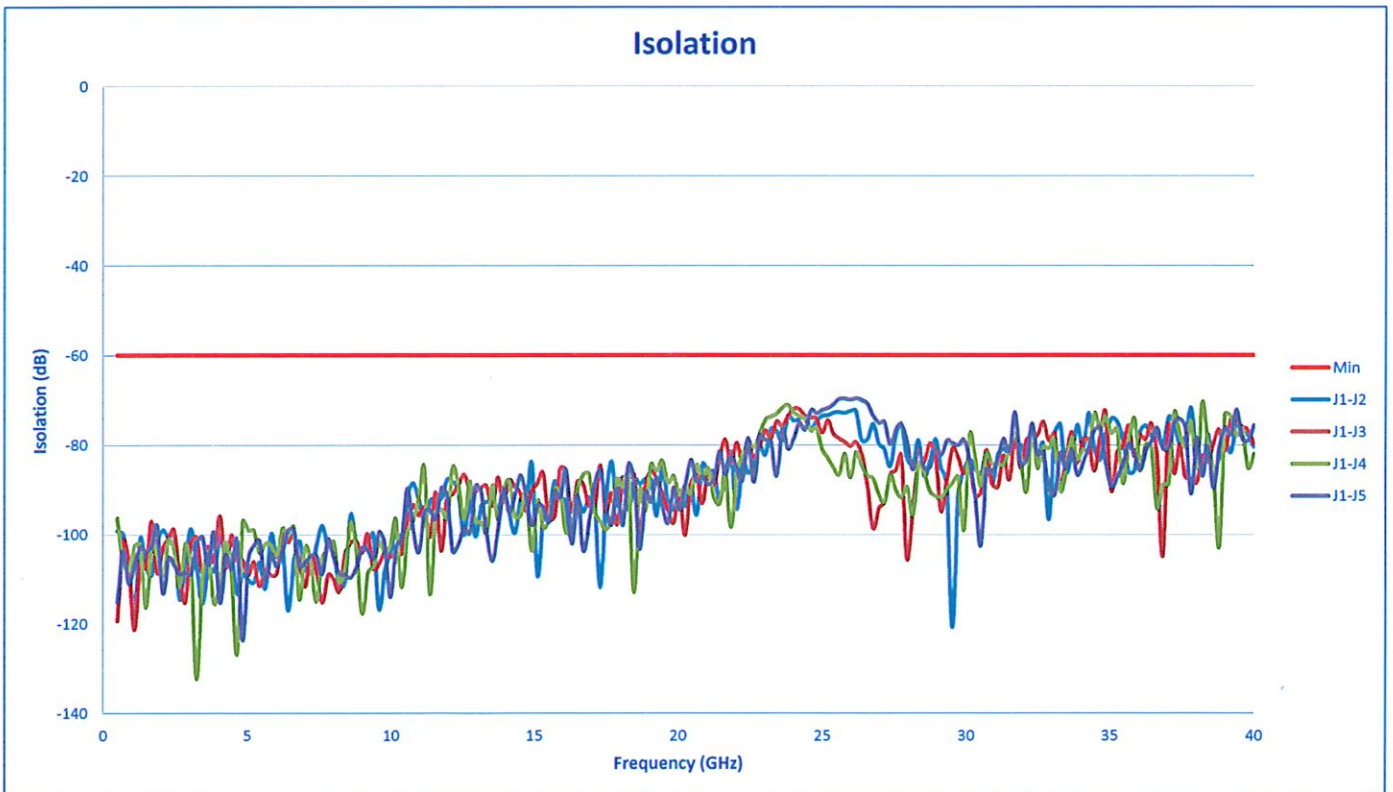
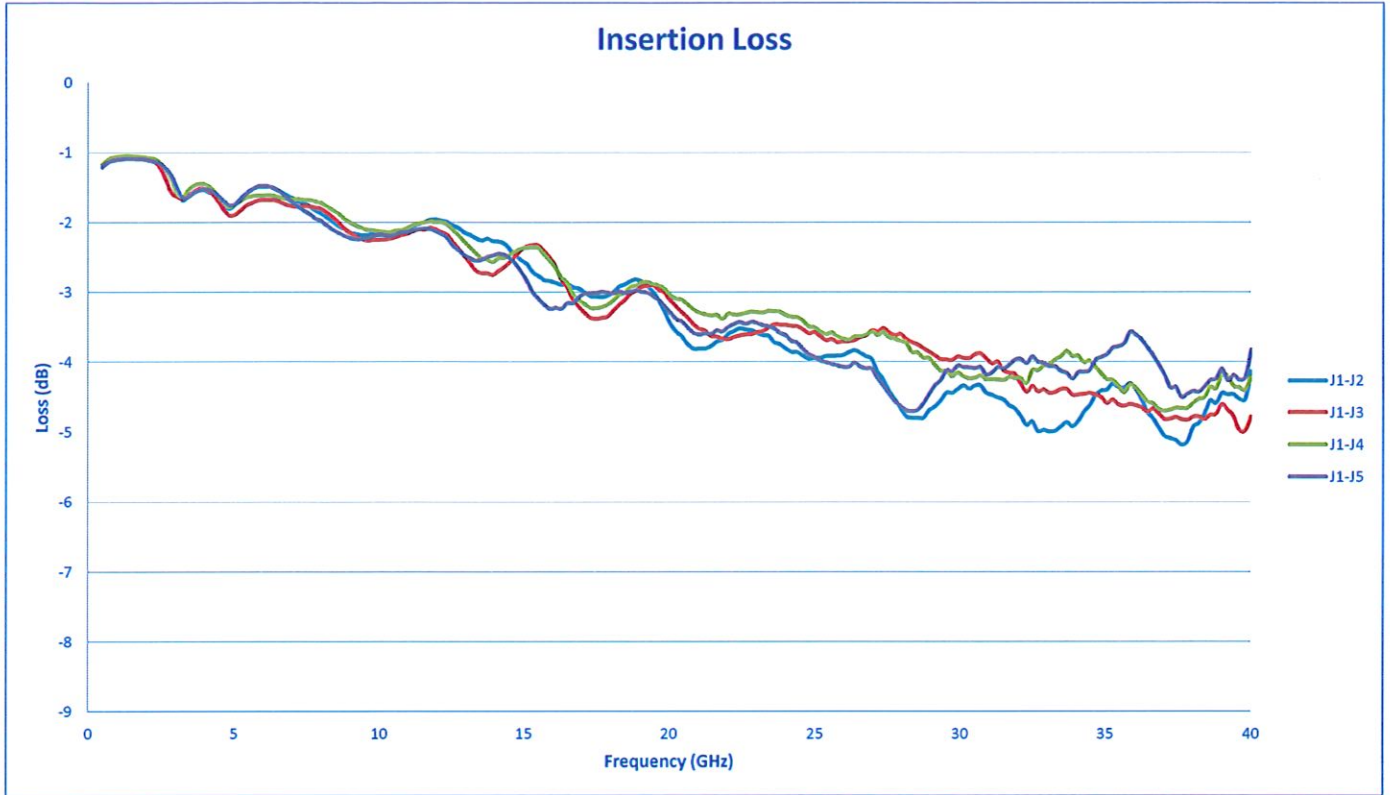
Date: _____

9/28/19



SUMMARY TEST DATA ON P4T-500M40G-60-T-55-292FF-SP Rev. B

PL26433/1935





SUMMARY TEST DATA ON P4T-500M40G-60-T-55-292FF-SP Rev. B

PL26433/1935

