



**SUMMARY TEST DATA
ON
P4T-500M40G-60-T-55-292FF-SP Rev. B**

Customer: _____
 SO No: _____
 Model No: P4T-500M40G-60-T-55-292FF-SP Rev. B
 Serial No: PL26937/1935

Tested By: A. Lopez
 Temperature: 25 Degrees C
 Date: 8/30/2019
 Drawing No: 26913624-B Rev: B2

TEST ITEM NO.	PARAMETERS	SPECIFIED VALUE	TEST RESULTS	QA QC
1	Frequency Range:	0.5 - 40 GHz	0.5 - 40 GHz	PMI QA 1
2	Isolation:	60 dB Min	63.9 dB See Plot	
3	Insertion Loss:	8.0 dB Max	5.86 dB See Plot	
4	VSWR: In/Out	2.5:1 Max 2.0:1 Typ	2.47 :1 See Plot	
5	Input Power	+20 dBm CW Max	Pass (See Typical Characteristics)	
6	Survival Power	1 W Peak 1 μ s	Pass (See Typical Characteristics)	
7	RF Switching Speed	Rise: 15 ns Max Fall: 15 ns Max Delay On: 50 ns Max Delay Off: 50 ns Max	Pass (See Typical Characteristics)	
8	DC Supply:	+5 VDC @ 250 mA Max -5 VDC @ 100 mA Max	127 mA 67 mA	

CONTROL SIGNAL

E1	E2	Function
0	0	J1-J2 "Low Loss"
0	1	J1-J3 "Low Loss"
1	0	J1-J4 "Low Loss"
1	1	J1-J5 "Low Loss"

QA/QC Approval: _____

PMI
QA 1

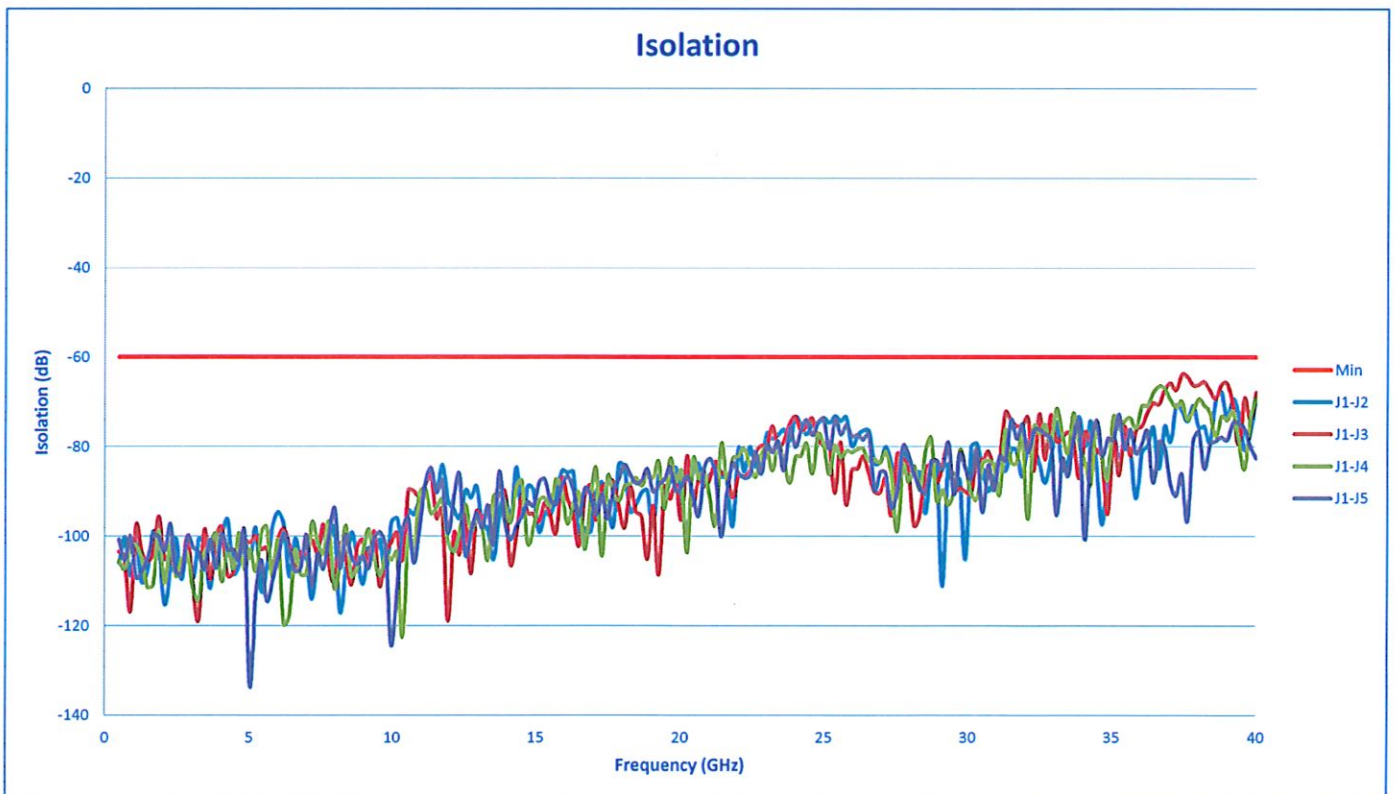
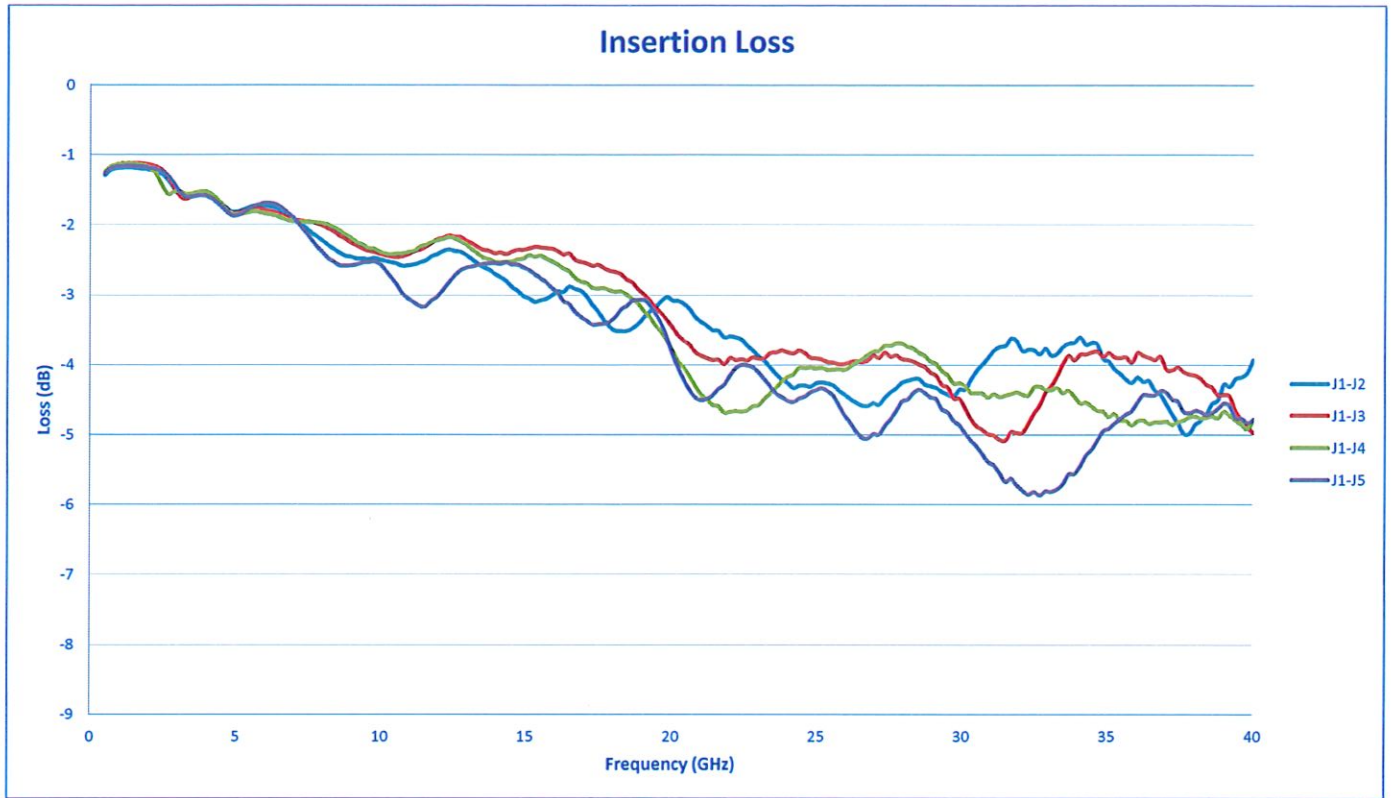
Date: _____

9/28/19



SUMMARY TEST DATA ON P4T-500M40G-60-T-55-292FF-SP Rev. B

PL26937/1935





SUMMARY TEST DATA ON P4T-500M40G-60-T-55-292FF-SP Rev. B

PL26937/1935

