



**SUMMARY TEST DATA  
ON  
P4T-500M40G-60-T-55-292FF-SP Rev. B**

Customer: \_\_\_\_\_  
 SO No: \_\_\_\_\_  
 Model No: P4T-500M40G-60-T-55-292FF-SP Rev. B  
 Serial No: PL26439/1935

Tested By: H. Gonzales  
 Temperature: 25 Degrees C  
 Date: 8/30/2019  
 Drawing No: 26913624-B      Rev: B2

TEST ITEM NO.	PARAMETERS	SPECIFIED VALUE	TEST RESULTS	QA QC
1	Frequency Range:	0.5 - 40 GHz	0.5 - 40 GHz	PMI QA 1
2	Isolation:	60 dB Min	64.1 dB See Plot	
3	Insertion Loss:	8.0 dB Max	6.31 dB See Plot	
4	VSWR: In/Out	2.5:1 Max 2.0:1 Typ	2.4 :1 See Plot	
5	Input Power	+20 dBm CW Max	Pass (See Typical Characteristics)	
6	Survival Power	1 W Peak 1 $\mu$ s	Pass (See Typical Characteristics)	
7	RF Switching Speed	Rise: 15 ns Max Fall: 15 ns Max Delay On: 50 ns Max Delay Off: 50 ns Max	Pass (See Typical Characteristics)	
8	DC Supply:	+5 VDC @ 250 mA Max -5 VDC @ 100 mA Max	127 mA 67 mA	

**CONTROL SIGNAL**

E1	E2	Function
0	0	J1-J2 "Low Loss"
0	1	J1-J3 "Low Loss"
1	0	J1-J4 "Low Loss"
1	1	J1-J5 "Low Loss"

QA/QC Approval: \_\_\_\_\_

PMI  
QA 1

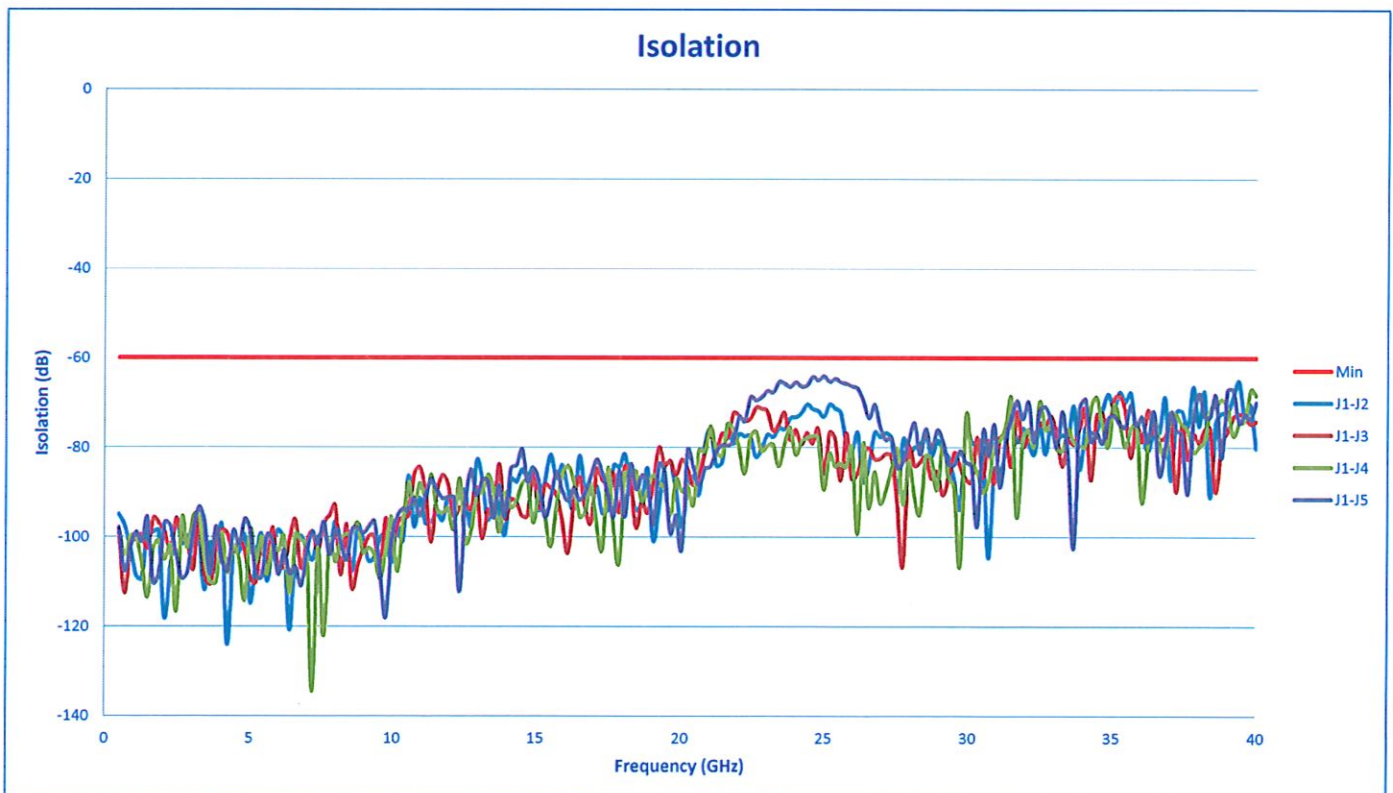
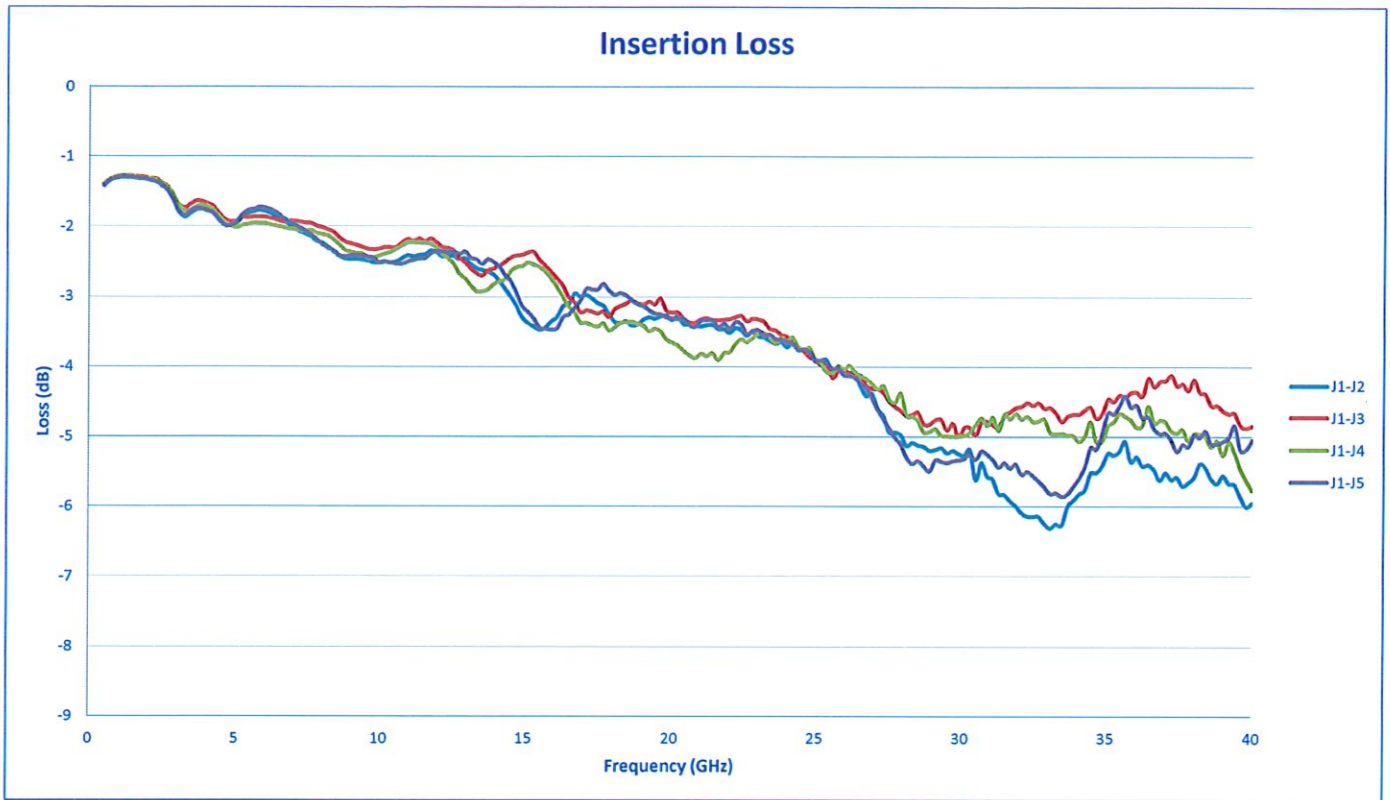
Date: \_\_\_\_\_

9/28/19



# SUMMARY TEST DATA ON P4T-500M40G-60-T-55-292FF-SP Rev. B

PL26439/1935





# SUMMARY TEST DATA ON P4T-500M40G-60-T-55-292FF-SP Rev. B

PL26439/1935

