



**SUMMARY TEST DATA
ON
PE2-60-1R018R0-4R5-22-12-SFF**

Customer: _____
 SO No: _____
 Model No: PE2-60-1R018R0-4R5-22-12-SFF
 Serial No: PL28045/2009

Tested By: A. Lopez
 Temperature: +25°C
 Date: 2/21/2020
 Drawing No: 26930090 A1

TEST. ITEM NO	PARAMETERS	SPECIFIED VALUE	Test Results			QA QC
			+25°C	-20°C	+70°C	
1	Frequency Range:	1.0 TO 18.0 GHz	1.0 TO 18.0 GHz	1.0 TO 18.0 GHz	1.0 TO 18.0 GHz	
2	Gain:	60 dB TYPICAL	64.48 dB See Graph	66.13 dB See Graph	62.59 dB See Graph	
3	Gain Flatness:	±3.0 dB Typ.	2.62 dB ± See Graph	2.05 dB ± See Graph	3.23 dB ± See Graph	
4	Noise Figure:	4.5 dB Typ. (*)	4.26 dB See Plot	4.26 dB See Plot	4.26 dB See Plot	
5	OP1dB:	22 dBm Min.	24.53 dBm See Graph	24.53 dBm See Graph	24.53 dBm See Graph	
6	VSWR Input/Output:	2.0:1 Max.	1.84 :1 See Graph	1.89 :1 See Graph	1.74 :1 See Graph	
7	DC Supply:	+12 to +15 VDC @ 650 mA Typ.	+12 to +15VDC @ 640mA	+12 to +15VDC @ 620mA	+12 to +15VDC @ 660mA	

QA/QC Approval: _____

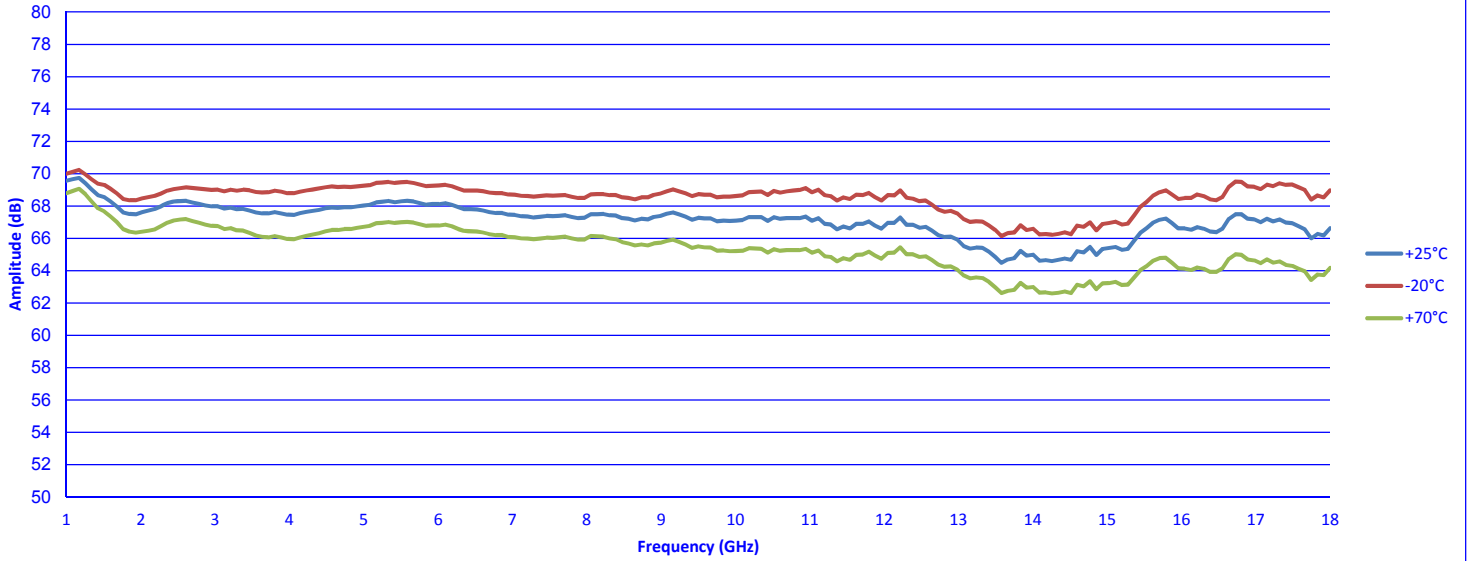
Date: _____



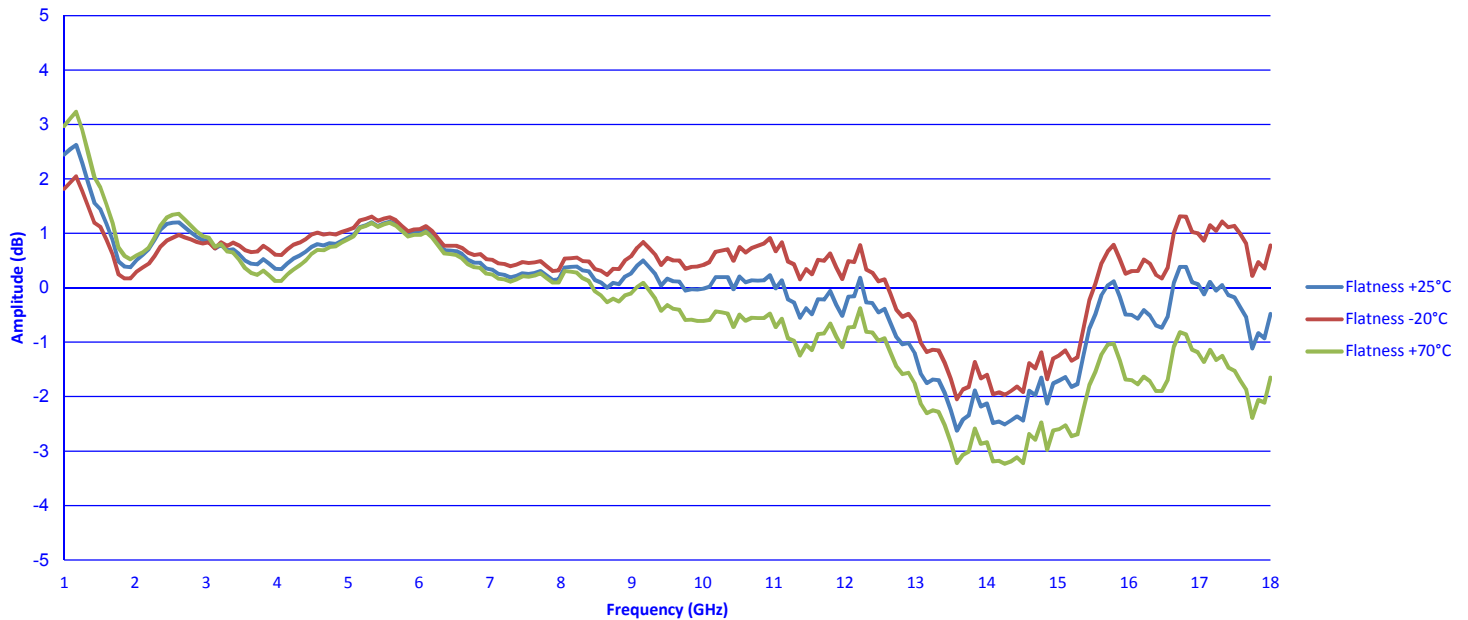
SUMMARY TEST DATA ON PE2-60-1R018R0-4R5-22-12-SFF

PL28045/2009

Gain



Gain Flatness

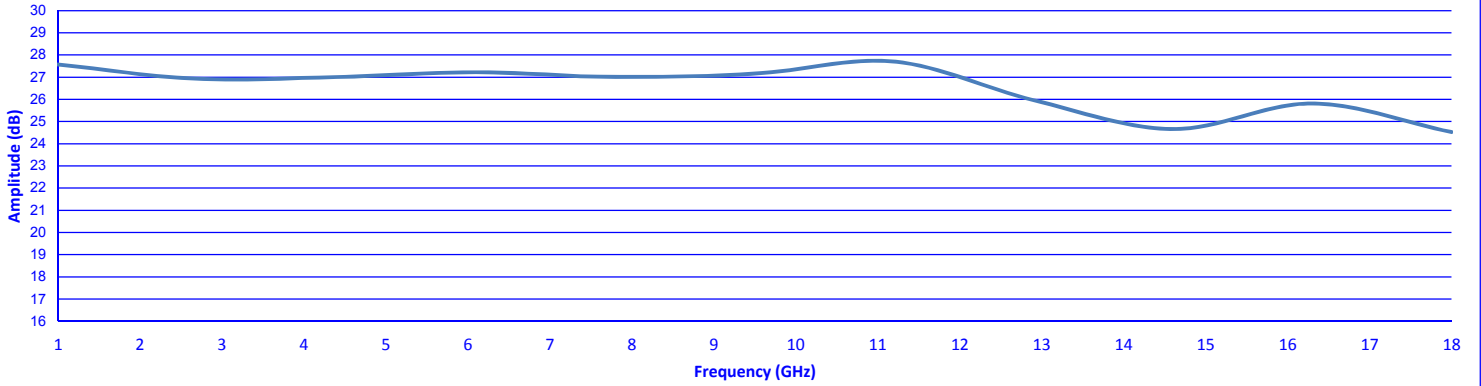




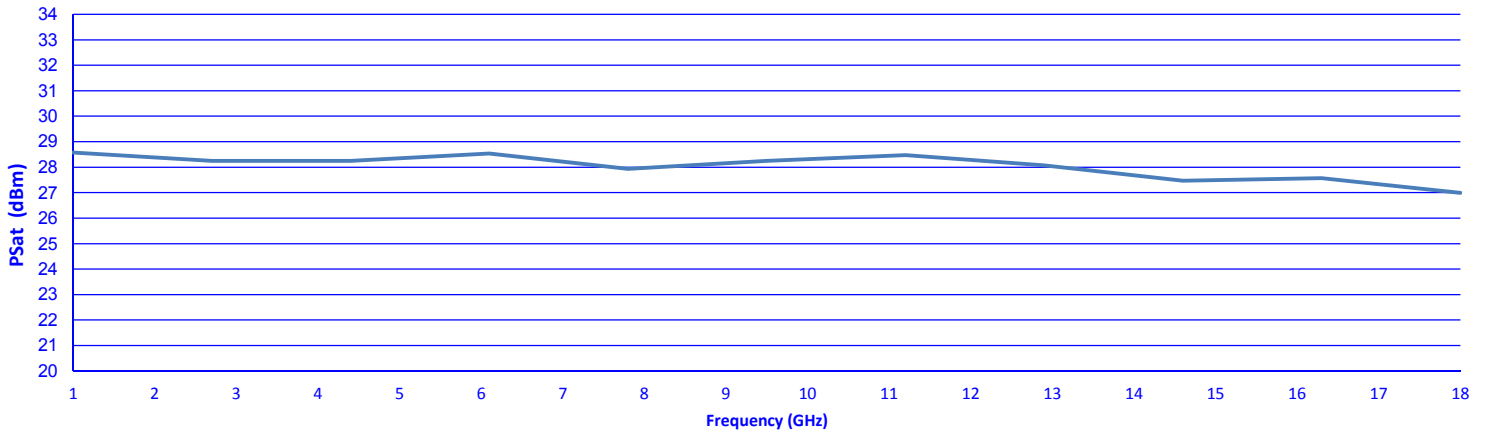
SUMMARY TEST DATA ON PE2-60-1R018R0-4R5-22-12-SFF

PL28045/2009

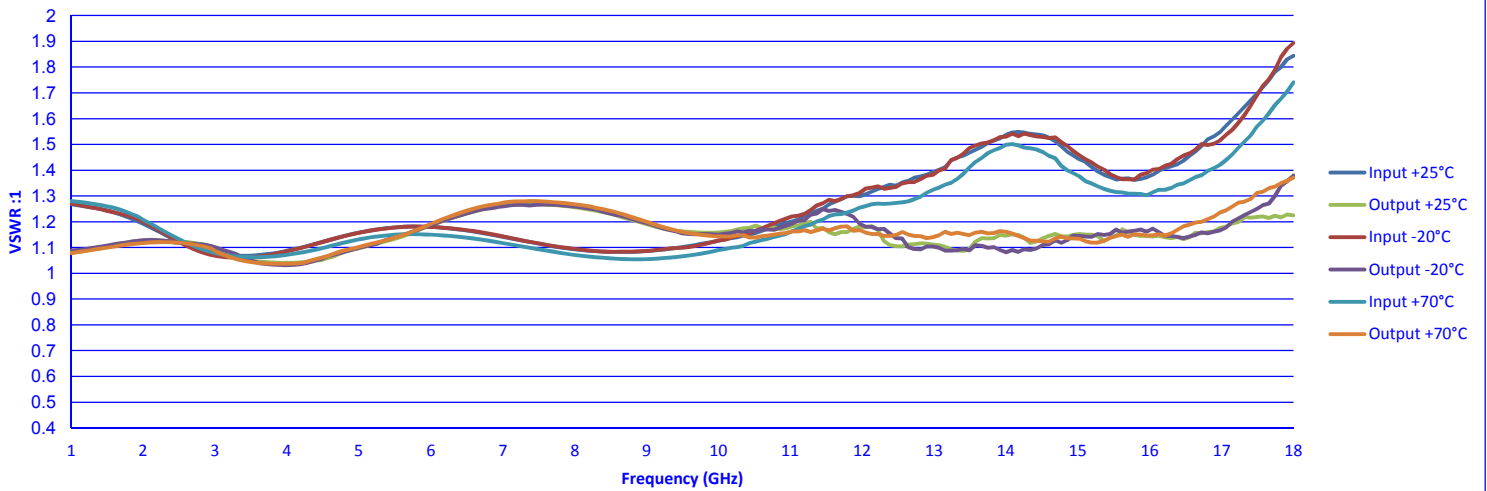
OP1dB



Frequency vs Psat



VSWR





SUMMARY TEST DATA ON PE2-60-1R018R0-4R5-22-12-SFF

Noise Figure

