



**SUMMARY TEST DATA
ON
P32T-0R5G18G-60-T-SFF-OPT0812**

Customer: _____
 SO No: _____
 Model No: P32T-0R5G18G-60-T-SFF-OPT0812
 Serial No: PL29956/2033

Tested By: L. McGraw
 Temperature: +25°C
 Date: 8/13/2020
 Drawing No: 27623123 Rev: A1

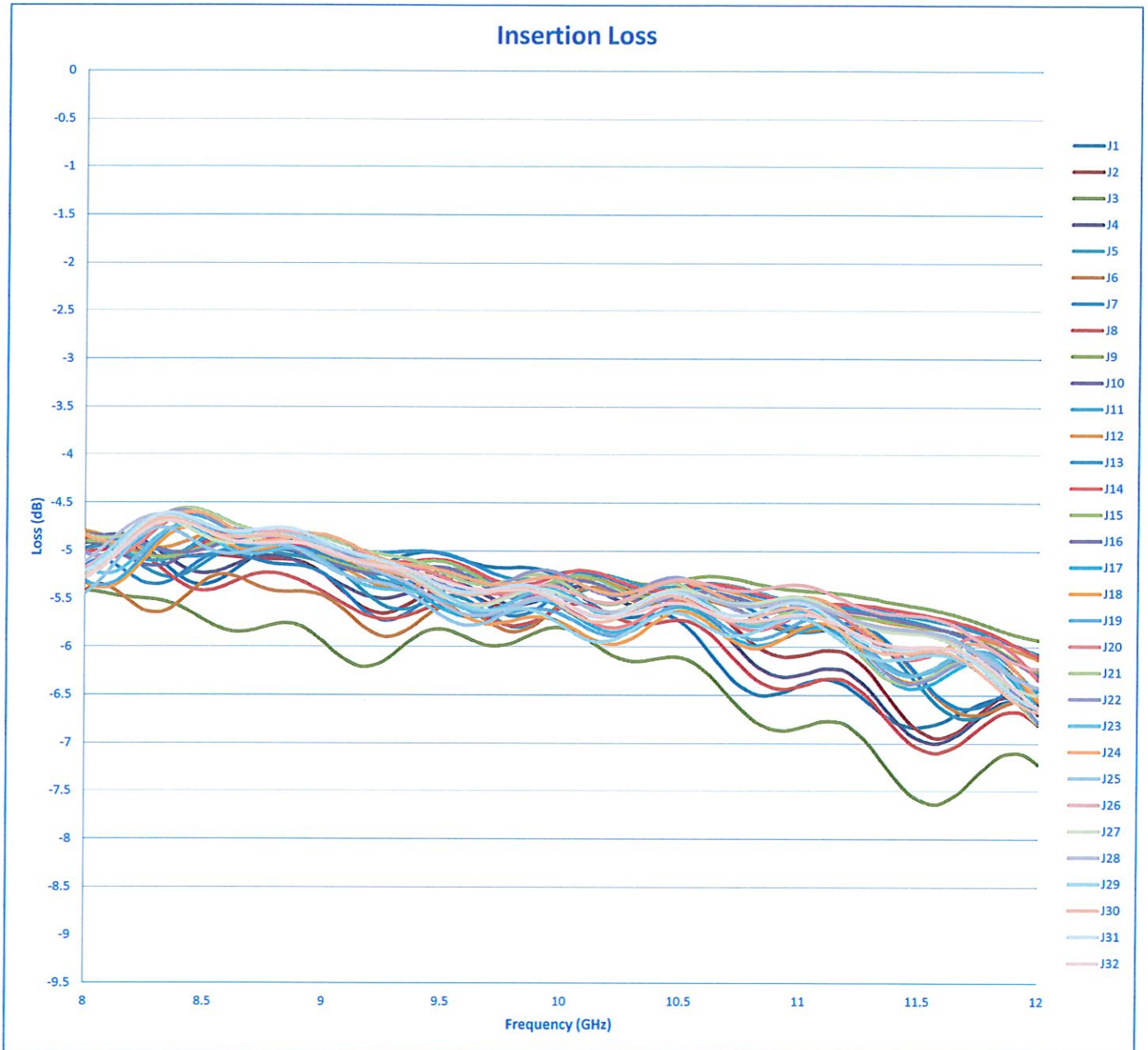
TEST ITEM No.	PARAMETERS	SPECIFIED VALUE	TEST RESULTS	QA QC	
1	Frequency Range:	0.5 to 18.0 GHz (Optimized for 8 to 12 GHz)	0.5 to 18 GHz (Optimized for 8 to 12 GHz)	PMI QA2	
2	Insertion Loss:	9.5 dB Max.	7.6 dB See Plot		
3	Isolation:	70 dB Min.	76.3 dB See Plot		
4	VSWR (In/Out):	2.0:1 Max.	1.97:1 In 1.99:1 Out See Plot		
5	Switching Speed:	100 ns Max.	<100 ns See Typical Characteristics		
6	Input Power:	20 dBm CW Max. (Operating)	20 dBm CW See Typical Characteristics		
7	Survival Power:	1 Watt CW, 10 Watts Peak, 1 μs	Pass See Typical Characteristics		
8	Control:	Decoded (See Logic Table)	Pass		
9	DC Voltage:	+5 VDC @ 1600 mA -5 VDC @ 200 mA	+5 VDC @ 1300 mA -5 VDC @ 57 mA		PMI QA2

QA/QC Approval: *[Signature]* *[Signature]* *[Signature]* PMI QA2 Date: 8/21/20



SUMMARY TEST DATA ON P32T-0R5G18G-60-T-SFF-OPT0812

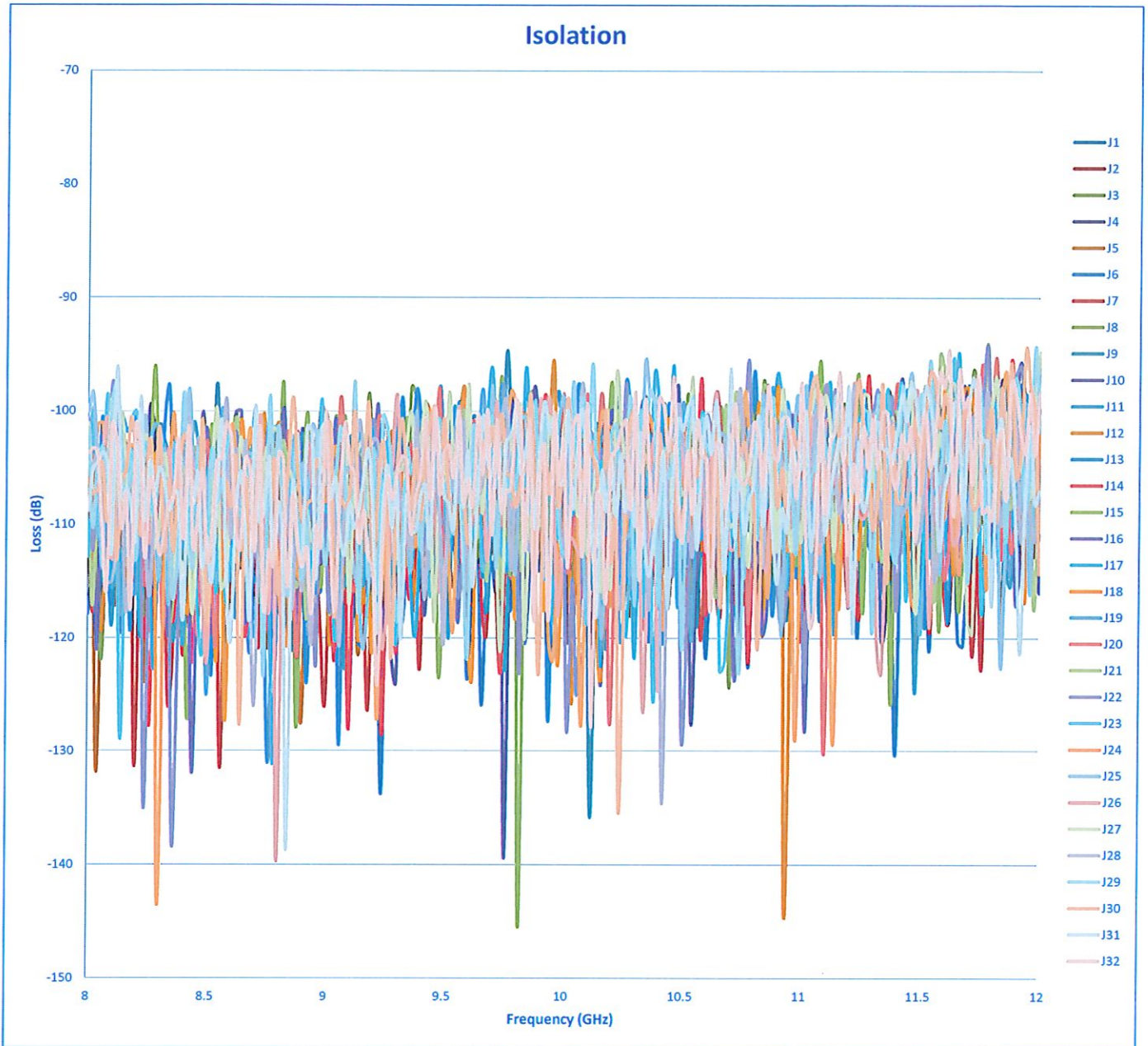
PL29956/2033





SUMMARY TEST DATA ON P32T-0R5G18G-60-T-SFF-OPT0812

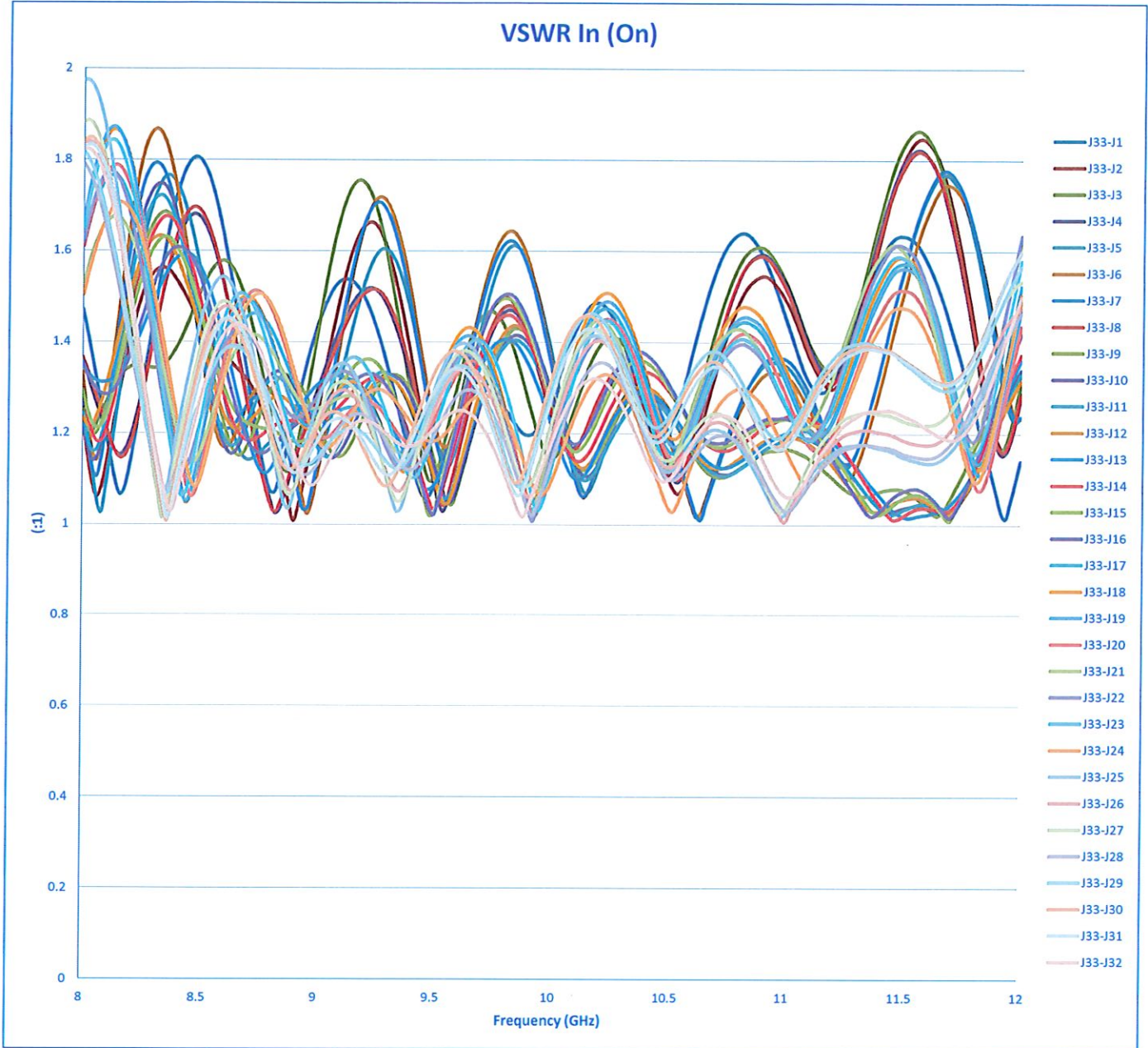
PL29956/2033





SUMMARY TEST DATA ON P32T-0R5G18G-60-T-SFF-OPT0812

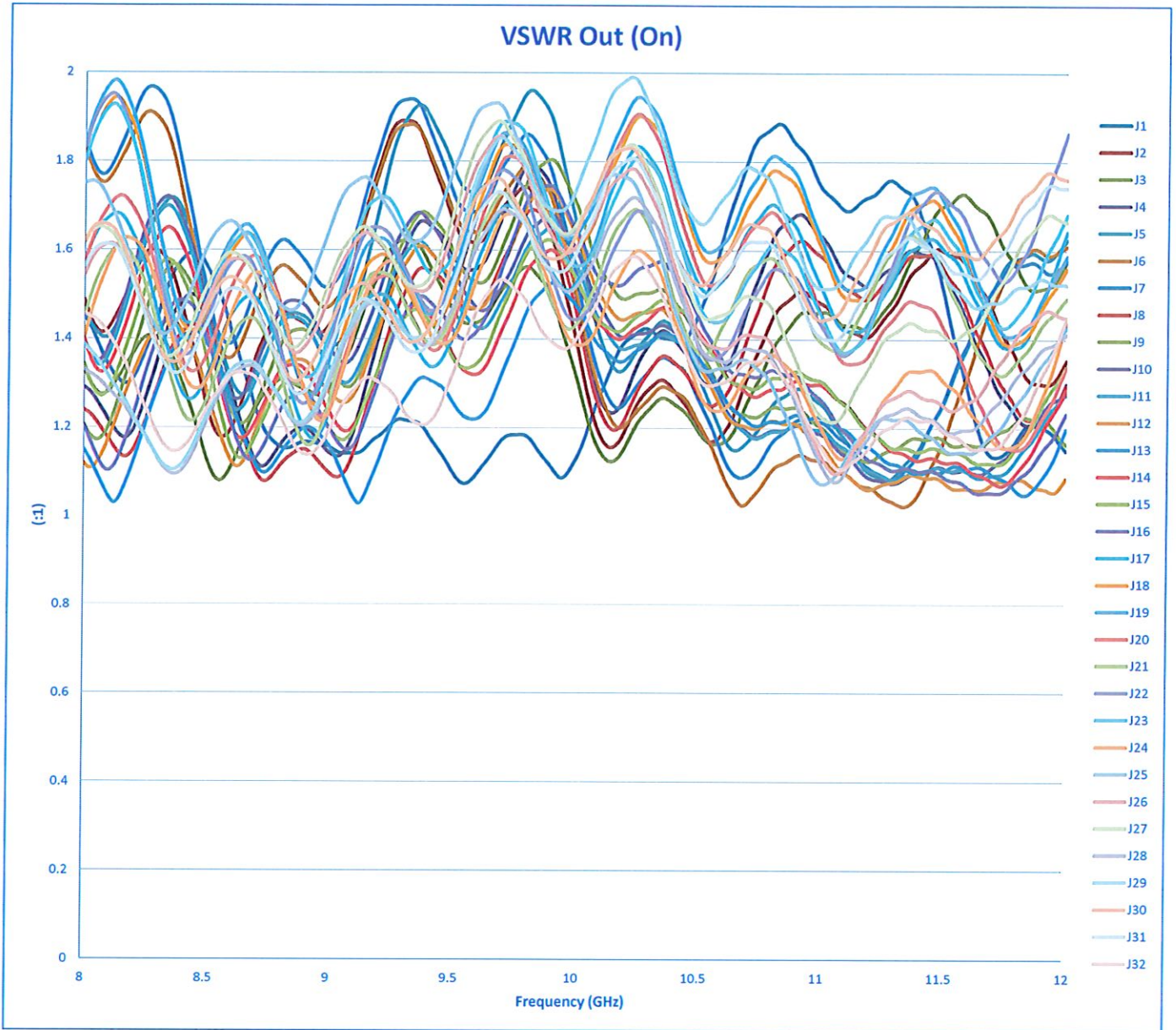
PL29956/2033





SUMMARY TEST DATA ON P32T-0R5G18G-60-T-SFF-OPT0812

PL29956/2033





SUMMARY TEST DATA ON P32T-0R5G18G-60-T-SFF-OPT0812

PL29956/2033

