



**SUMMARY TEST DATA  
ON  
P4T-2G18G-70-T-SFF**

PL30118/2036

Customer: \_\_\_\_\_  
 SO No: \_\_\_\_\_  
 Model No: **P4T-2G18G-70-T-SFF**  
 Serial No: **PL30118/2036**

Tested By: **John R**  
 Temperature: **25 Degrees C**  
 Date: **9/22/2020**  
 Drawing No: **27635280**      Rev: **A1**

TEST ITEM NO.	PARAMETERS	SPECIFIED VALUE	TEST RESULTS	QA QC
1	Frequency Range:	2.0 GHz to 18.0 GHz	2.0 GHz to 18.0 GHz	<b>PMI QA 2</b> 
2	Insertion Loss:	3.5 dB Max.	3.1 dB See Plot	
3	Isolation:	70 dB Min	70 dB See Plot	
4	VSWR: In/Out	2.0:1 Max.	1.8:1 In 1.9:1 Out See Plots	
5	Input Power:	+30 dBm Max. (Survival) +20 dBm Max. (Operational)	Pass See Typical Characteristics	
6	Switching Speed:	100 ns Max.	Pass See Typical Characteristics	
7	DC Supply:	+5 VDC @ 200 mA Typ. -15 VDC @ 100 mA Typ.	+5 VDC @ 112 mA -15 VDC @ 54 mA	
8	Control Signal:	TTL Logic "0" = Low Loss TTL Logic "1" = Isolation E1 Controls J1-J2 E2 Controls J1-J3 E3 Controls J1-J4 E4 Controls J1-J5	Pass	<b>PMI QA 2</b>

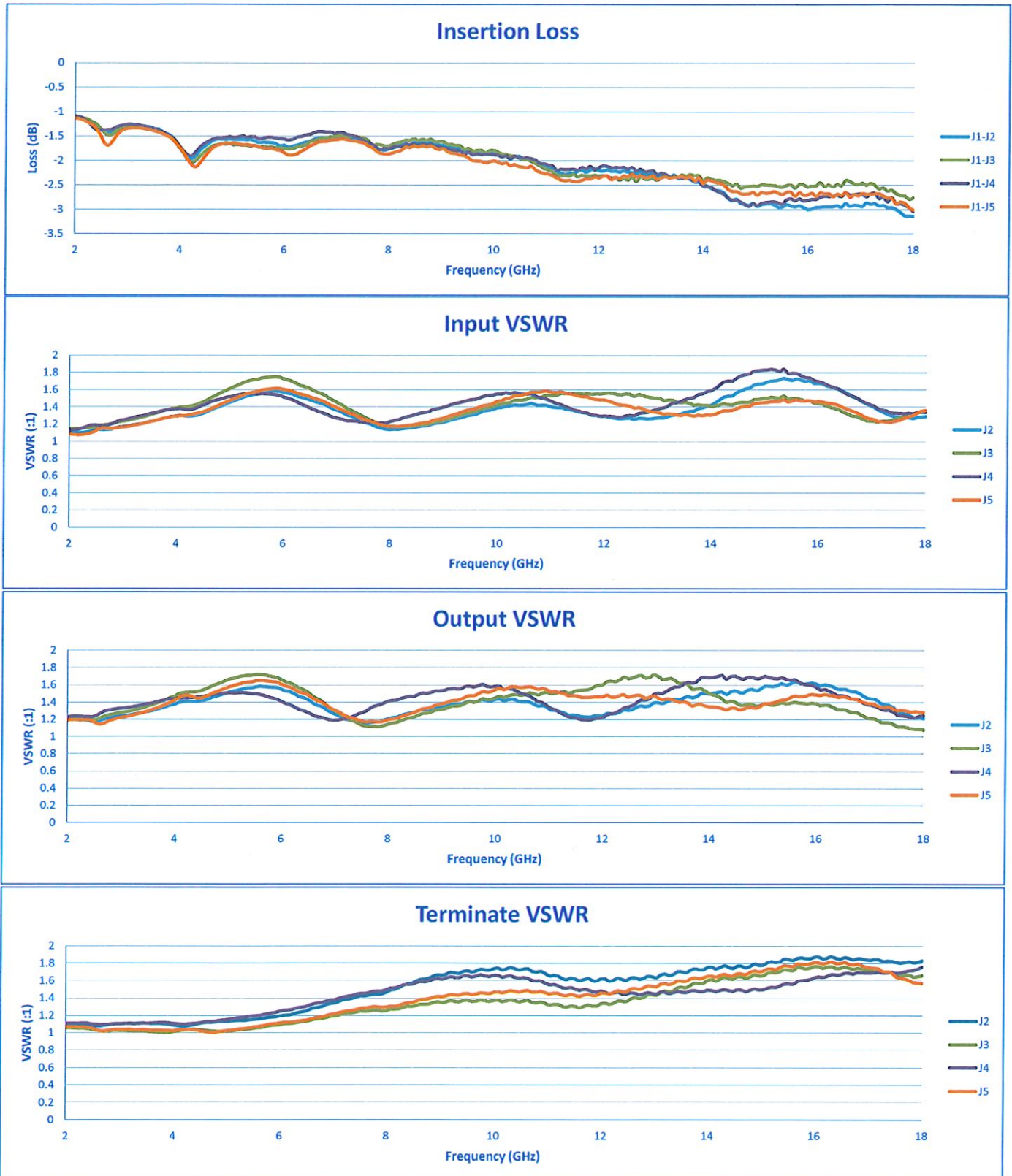
QA/QC Approval: \_\_\_\_\_ **PMI QA 2**

Date: 9/24/20



# SUMMARY TEST DATA ON P4T-2G18G-70-T-SFF

PL30118/2036





# SUMMARY TEST DATA ON P4T-2G18G-70-T-SFF

PL30118/2036

