



**SUMMARY TEST DATA
ON
P4T-2G18G-70-T-SFF**

PL30120/2036

Customer: _____
 SO No: _____
 Model No: P4T-2G18G-70-T-SFF
 Serial No: PL30120/2036

Tested By: John R
 Temperature: 25 Degrees C
 Date: 9/22/2020
 Drawing No: 27635280 Rev: A1

| TEST ITEM NO. | PARAMETERS | SPECIFIED VALUE | TEST RESULTS | QA QC |
|---------------|------------------|---|-------------------------------------|-------------|
| 1 | Frequency Range: | 2.0 GHz to 18.0 GHz | 2.0 GHz to 18.0 GHz | PMI QA 2 |
| 2 | Insertion Loss: | 3.5 dB Max. | 3.4 dB See Plot | |
| 3 | Isolation: | 70 dB Min | 70 dB See Plot | |
| 4 | VSWR: In/Out | 2.0:1 Max. | 1.9:1 In 1.9:1 Out See Plots | |
| 5 | Input Power: | +30 dBm Max. (Survival) +20 dBm Max. (Operational) | Pass See Typical Characteristics | |
| 6 | Switching Speed: | 100 ns Max. | Pass See Typical Characteristics | |
| 7 | DC Supply: | +5 VDC @ 200 mA Typ. -15 VDC @ 100 mA Typ. | +5 VDC @ 112 mA -15 VDC @ 54 mA | |
| 8 | Control Signal: | TTL Logic "0" = Low Loss TTL Logic "1" = Isolation E1 Controls J1-J2 E2 Controls J1-J3 E3 Controls J1-J4 E4 Controls J1-J5 | Pass | |

QA/QC Approval: *[Signature]* PMI QA 2

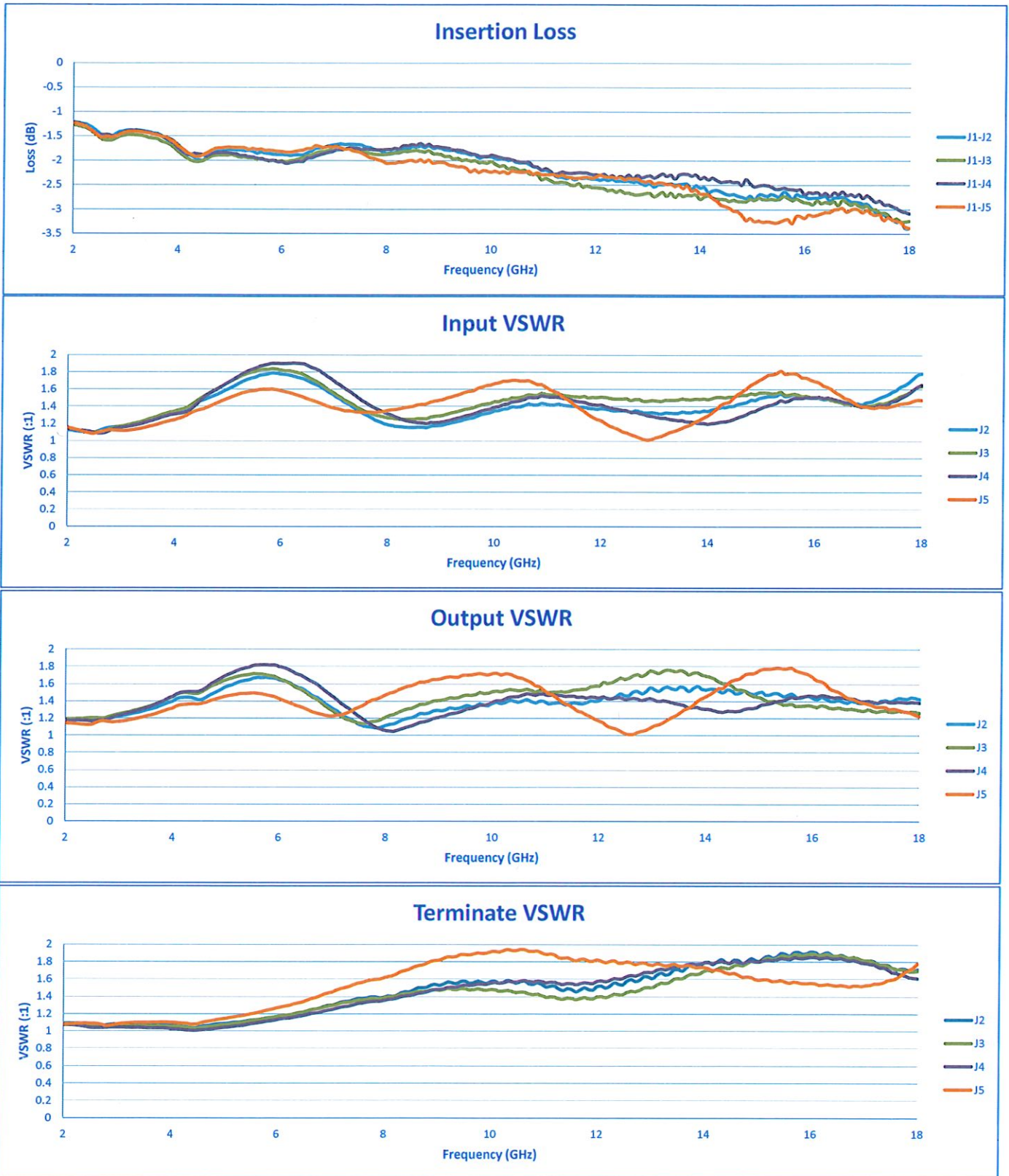
Date: 9/24/20

7311-F Grove Road Frederick, MD 21704 USA Phone: (301)662-5019 Fax: (301)662-1731
 Email: sales@pmi-rf.com



SUMMARY TEST DATA ON P4T-2G18G-70-T-SFF

PL30120/2036





SUMMARY TEST DATA ON P4T-2G18G-70-T-SFF

PL30120/2036

