



**SUMMARY TEST DATA  
ON  
TCDRO-16G-CD-1**

PL31050/2052

Customer: \_\_\_\_\_ Tested By: Bryan K.  
SO No: \_\_\_\_\_ Temperature: +25°C  
Model No: TCDRO-16G-CD-1 Date: 3/12/2021  
Serial No: PL31050/2052 Drawing No: 27634780 Rev: A1

TEST. ITEM NO	PARAMETERS	SPECIFIED VALUE	TEST RESULTS	QA QC
1	Center Frequency:	16 GHz	16.0 GHz See Plot	PMI QA 2
2	Mechanical Tuning Frequency:	±10 MHz	± 12.5 MHz	
3	Output Power:	18 dBm Min.	+19.95 dBm See Plot	
4	Spurious:	-85 dBc Min.	-87.50 dBc	
5	Harmonics:	-25 dBc Min.	-31.07 dBc See Plot	
6	*Phase Noise:	10 kHz Offset = -80 dBc/Hz 100 kHz Offset = -95 dBc/Hz	10 kHz Offset = -76.95 dBc/Hz 100 kHz Offset = -95.39 dBc/Hz	
7	Frequency Drift Temperature Coefficient :	0.8 ppm/°C	See typical characteristics	
9	DC Supply:	+15±0.5 VDC @ 200 mA Max	90 mA @ +15 VDC	PMI QA 2

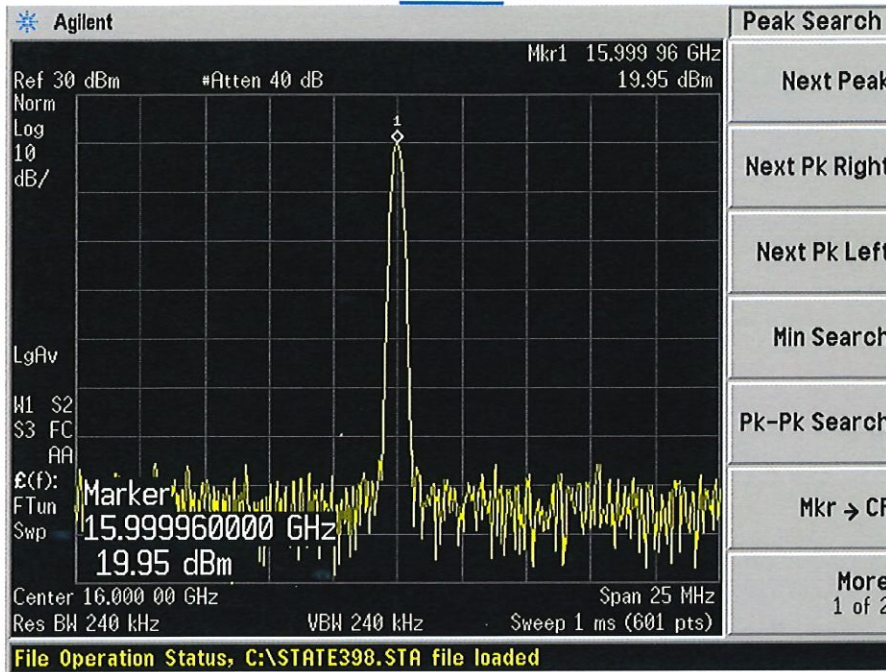
QA/QC Approval:   PMI QA 2 Date: 3/13/21



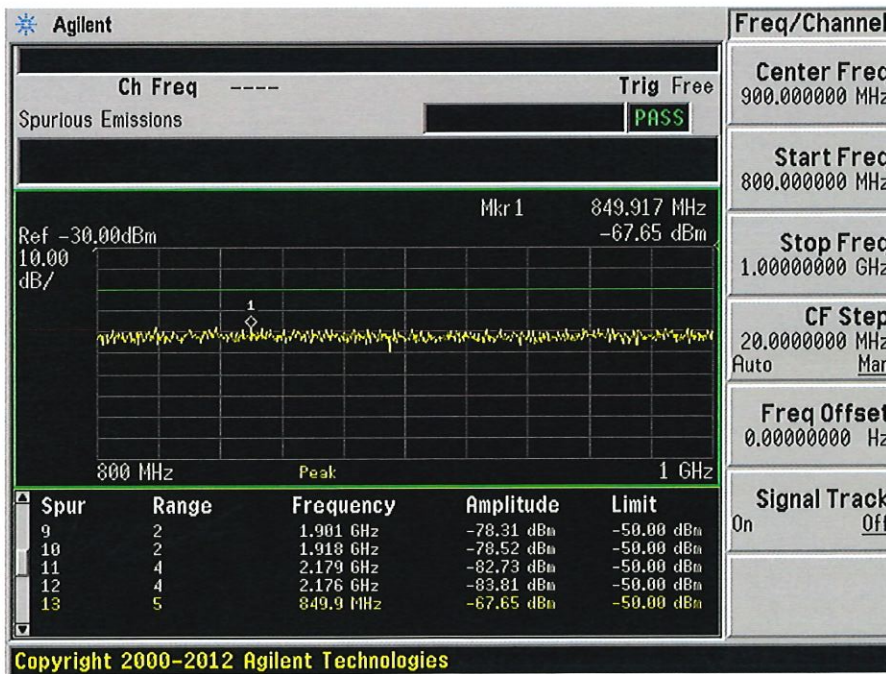
**SUMMARY TEST DATA  
ON  
TCDRO-16G-CD-1**

PL31050/2052

Carrier



Spurious



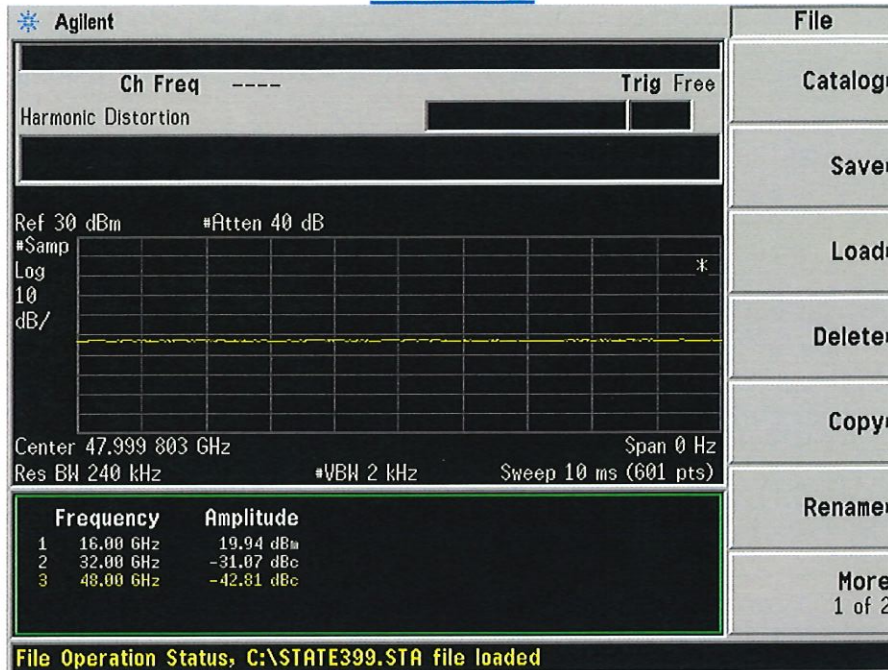




**SUMMARY TEST DATA  
ON  
TCDRO-16G-CD-1**

PL31050/2052

Harmonics



Phase Noise

