



**SUMMARY TEST DATA
ON
P8T-20M6G-80-R-515-SFF**

Customer: _____
 SO No: _____
 Model No: P8T-20M6G-80-R-515-SFF
 Serial No: PL31705/2108

Tested By: S. O'Neill
 Temperature: 25 C
 Date: 4/10/2024
 Drawing No: 27625043 Rev: A1

TEST ITEM NO.	PARAMETERS	SPECIFIED VALUE	TEST RESULTS	QA QC
1	Frequency Range:	20 MHz - 6 GHz	20 MHz - 6 GHz	PMI QA2
2	Insertion Loss:	2.75 dB Typ. 3.25 dB Max.	2.44 dB (See Plot)	
3	Isolation:	80 dB Min. 100 dB Typ.	81 dB (See Plot)	
4	VSWR:	2.0:1 Max.	1.7:1 (See Plot)	
5	Switching Speed:	250 ns Max.	<240 ns (See Typical Characteristics)	
6	Operating Power:	23 dBm CW Max.	Pass	
7	DC Supply:	+5 VDC @ 350 mA -15 VDC @ 100 mA	190 mA 30 mA	
8	Control Signal:	3 Bit Decoded TTL Logic	Pass	

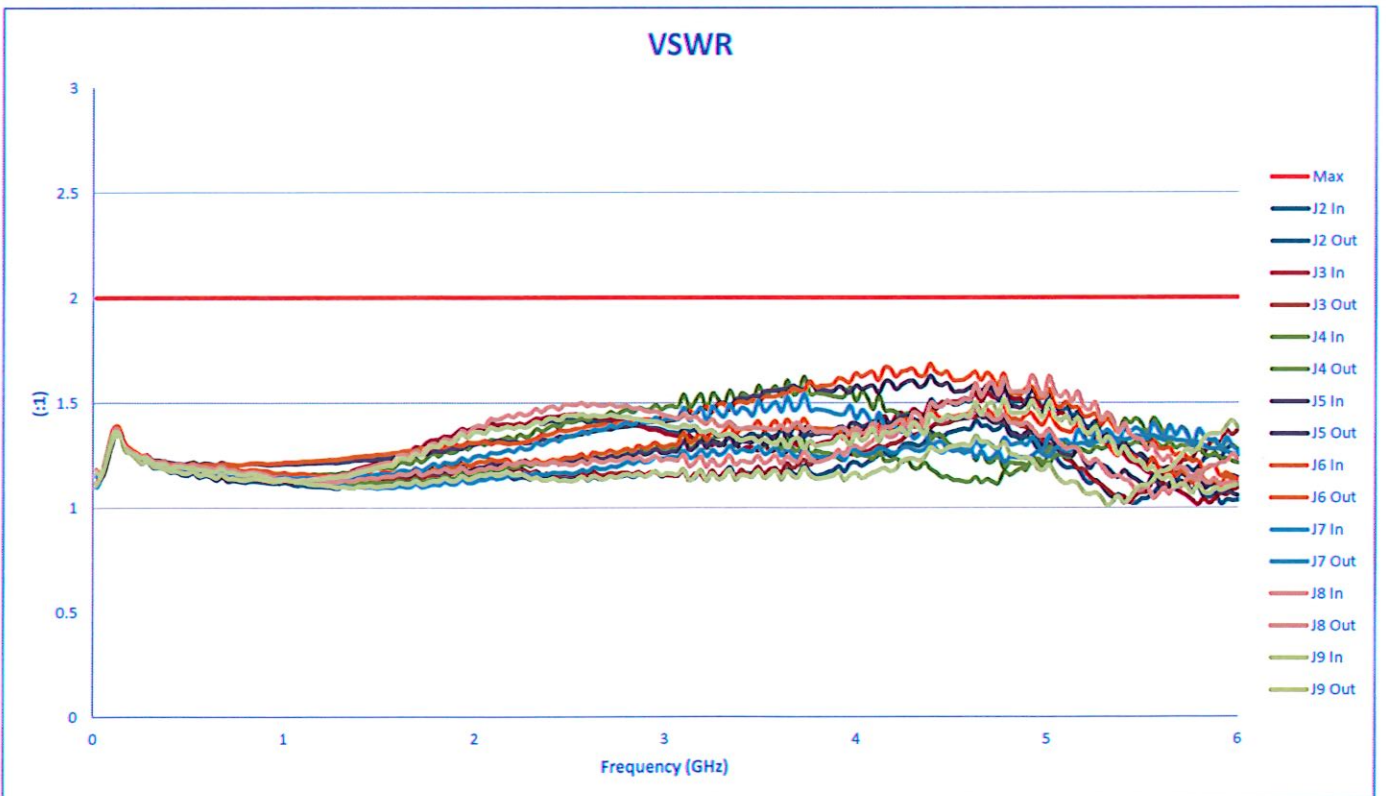
QA/QC Approval: _____ PMI
QA2

Date: 4/15/2024



SUMMARY TEST DATA ON P8T-20M6G-80-R-515-SFF

PL31705/2108





**SUMMARY TEST DATA
ON
P8T-20M6G-80-R-515-SFF**

PL31705/2108

