



**SUMMARY TEST DATA
ON
P4T-0R1G20G-100-T-SFF-ROHS**

Customer: _____
SO No: _____
Model No: P4T-0R1G20G-100-T-SFF-ROHS
Serial No: PL32647/2123

Tested By: Bryan K.
Temperature: +25°C
Date: 6/9/2021
Drawing No: 27639820 Rev: A1

| TEST ITEM NO. | PARAMETERS | SPECIFIED VALUE | TEST RESULTS | QA QC |
|---------------|-------------------|---|-----------------------------------|----------|
| 1 | Frequency Range: | 0.1 GHz TO 20.0 GHz | 0.1 GHz TO 20.0 GHz | PMI QA 2 |
| 2 | Insertion Loss: | 5.0 dB MAX | 4.2 dB See Plot | |
| 3 | Isolation: | 110 dB MIN | 110.02 dB See Plot | |
| 4 | VSWR: In/Out | 2.0:1 Max | 1.9:1 See Plot | |
| 5 | Switching Speed: | 300 ns (10% - 90% RF) | See Typical Characteristics | |
| 6 | Survival Power: | +30 dBm (1 WATT) | Pass | |
| 7 | RF Phase Tracking | 2 Degrees Per °C | Pass | |
| 8 | Power Supply: | +5 VDC @ 200mA MAX -12 VDC @ 100mA MAX | +5 VDC @ 90 mA -15 VDC @ 50 mA | |

QA/QC Approval: _____

PMI
QA 2

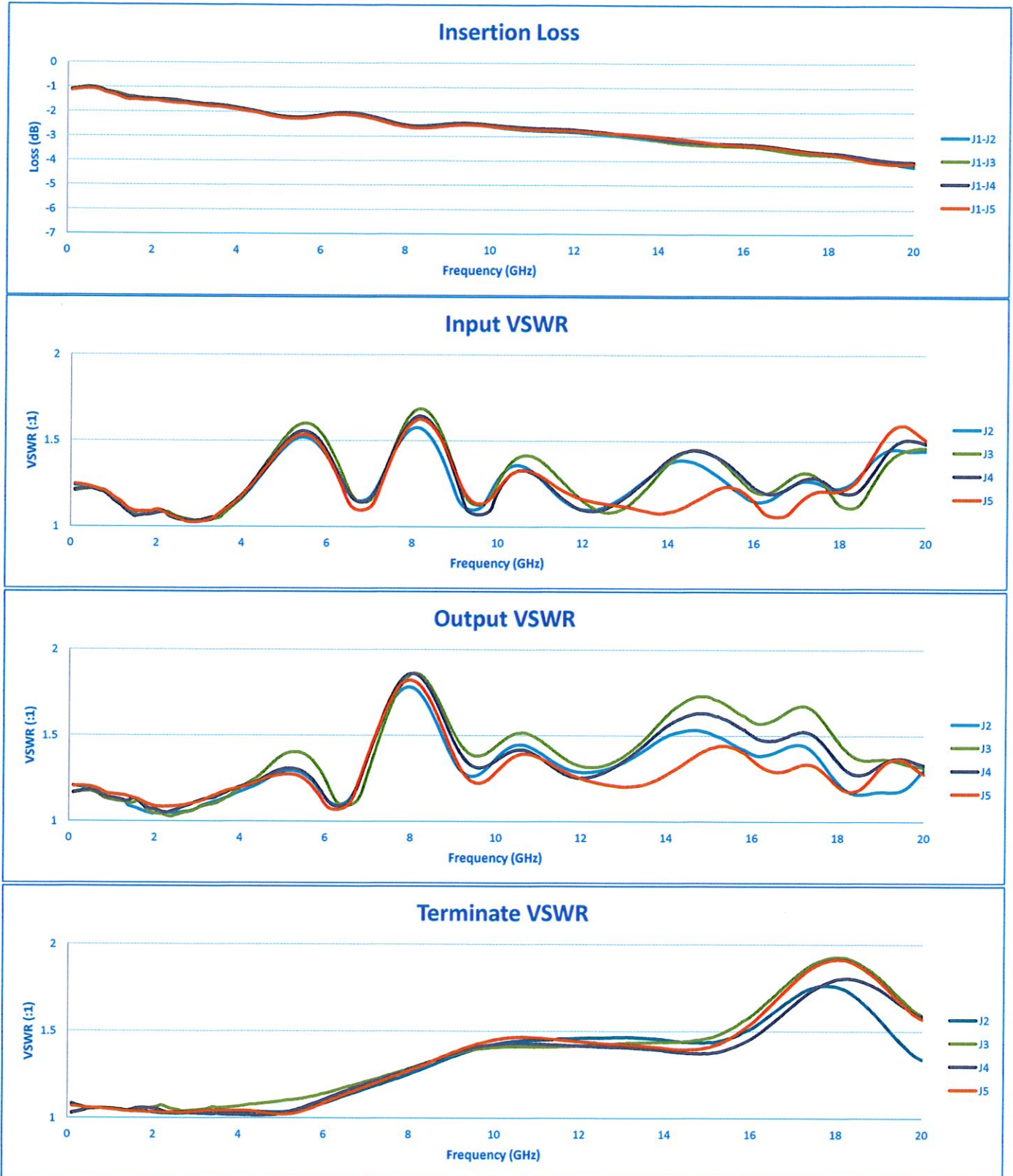
Date: _____

6/9/21



SUMMARY TEST DATA ON P4T-0R1G20G-100-T-SFF-ROHS

PL32647/2123





**SUMMARY TEST DATA
ON
P4T-0R1G20G-100-T-SFF-ROHS**

PL32647/2123

