



## SUMMARY TEST DATA ON P16T-100M20G-60-T-512-SFF-DEC

Customer: \_\_\_\_\_  
 SO No: \_\_\_\_\_  
 Model No: P16T-100M20G-60-T-512-SFF-DEC  
 Serial No: PL34285/2142

Tested By: S. O'Neill  
 Temperature: +25° C  
 Date: 3/30/2023  
 Drawing No: 27620911      Rev: A2

TEST ITEM No.	PARAMETERS	SPECIFIED VALUE	TEST RESULTS	QA QC	
1	Frequency Range:	0.1 to 20 GHz	0.1 to 20 GHz	PMI QA2	
2	Insertion Loss:	8.5 dB Typ.	7.43 dB See Plot		
3	Isolation:	60 dB Typ.	76 dB See Plot		
4	VSWR (Input/Output):	2.0:1 Typ., 2.5:1 Max.	2.39:1 See Plot		
5	VSWR (Output/Off):	2.0:1 Typ., 2.5:1 Max.	1.93:1 See Plot		
6	Switching Speed (Rise/Fall):	50 ns Typ. / 10 ns TYP.	<50 ns See Typical Characteristics		
7	Switching Speed (Delay On/Off):	150 ns Max.	<150 ns See Typical Characteristics		
8	Input Power:	+20 dBm CW	Pass See Typical Characteristics		
9	Survival Power:	1 Watt CW 10 Watts Peak, 1 µsec	Pass See Typical Characteristics		
10	Control:	4-BIT Decoded TTL Logic (See Table)	Pass		
11	DC Supply:	+5 VDC @ 750 mA -12 VDC @ 200 mA	+5 V @ 199 mA -12 V @ 186 mA		PMI QA2

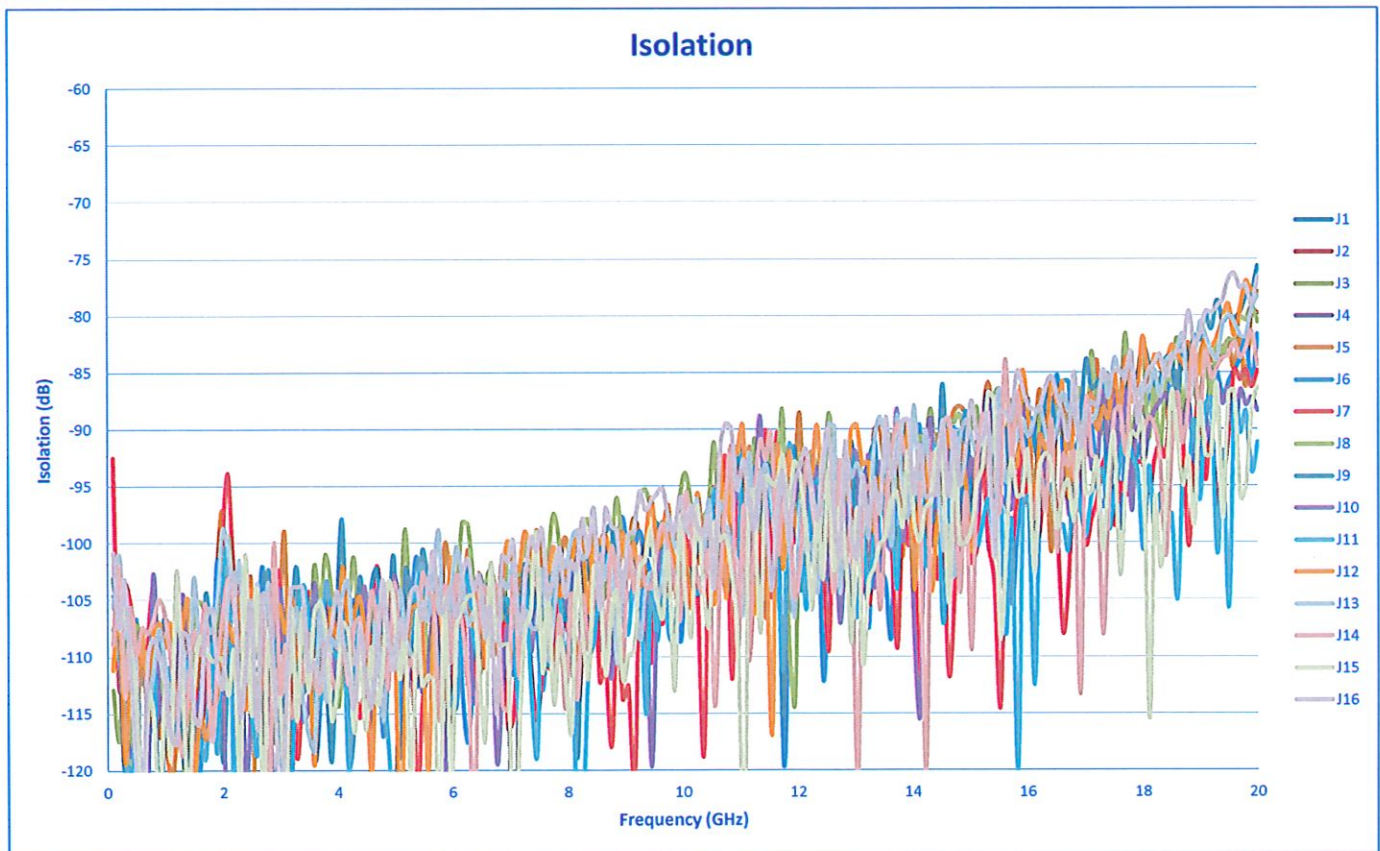
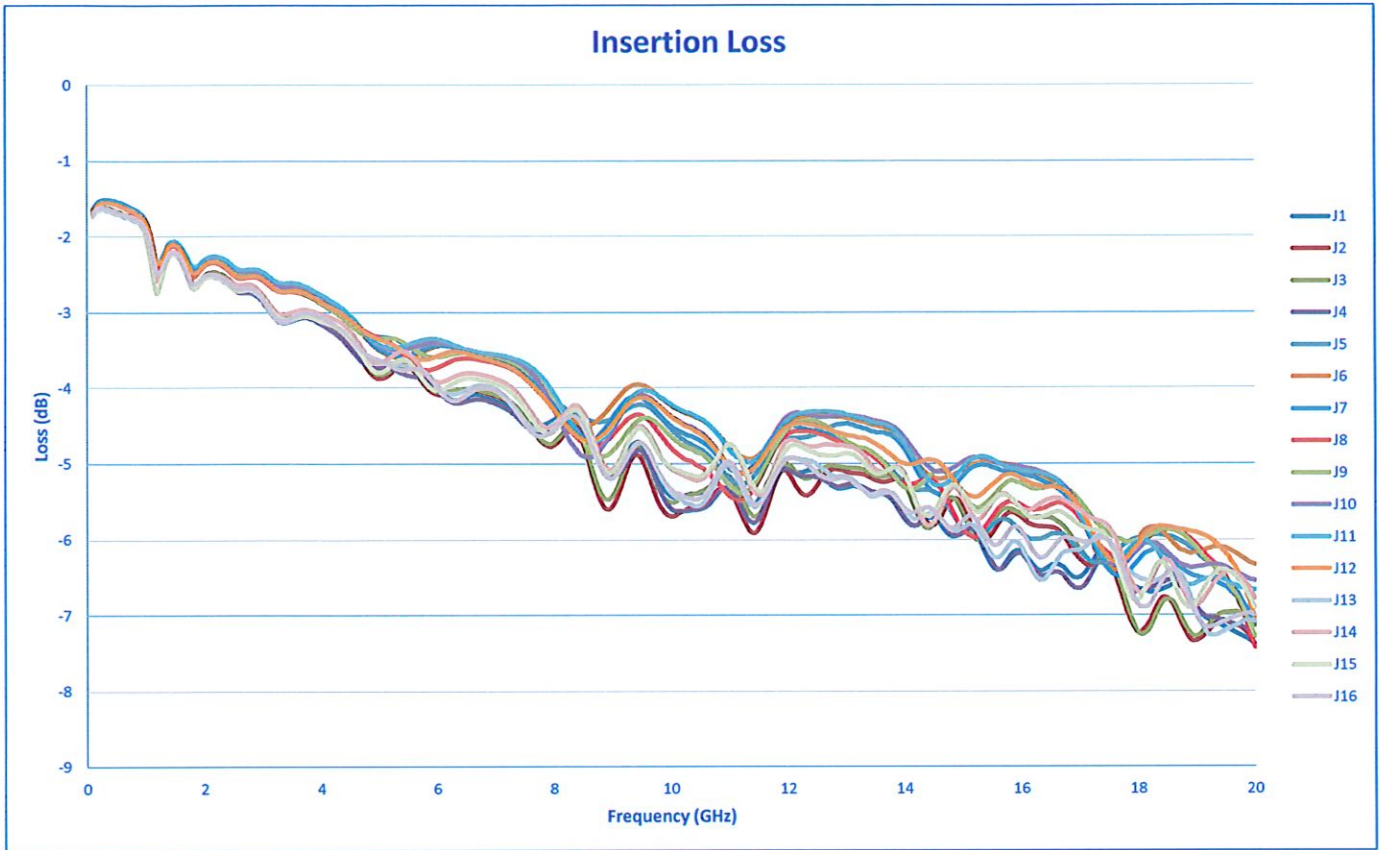
QA/QC Approval:       PMI  
QA2

Date: 3/31/2023



# SUMMARY TEST DATA ON P16T-100M20G-60-T-512-SFF-DEC

PL34285/2142







# SUMMARY TEST DATA ON P16T-100M20G-60-T-512-SFF-DEC

PL34285/2142

