



**SUMMARY TEST DATA
ON
P6T-0R5G18G-60-T-SFF**

Customer: _____
SO No: _____
Model No: P6T-0R5G18G-60-T-SFF
Serial No: PL34307/2142

Tested By: Bryan K.
Temperature: +25° C
Date: 10/21/2021
Drawing No: 27641600 Rev: A1

TEST ITEM NO.	PARAMETERS	SPECIFIED VALUE	TEST RESULTS	QA QC
1	Frequency Range	0.5 GHz to 18 GHz	0.5 GHz to 18 GHz	PMI QA 2
2	Isolation	60 dB Min.	64.4 dB	
3	Insertion Loss	4.25 dB Max.	3.7 dB	
4	VSWR: In/Out	2:1 Max.	1.8:1 In 1.85:1 Out	
5	Input Power	20 dBm CW Max.	20 dBm CW	
6	DC Supply	+5VDC @ 300 mA Max. -5VDC @ 100 mA Max.	+5VDC @ 269 mA -5VDC @ 92 mA	
7	Control Signal	TTL LOGIC "0" : Insertion Loss "1" : Isolation E1 : J1-J2 E2 : J1-J3 E3 : J1-J4 E4 : J1-J5 E5 : J1-J6 E6 : J1-J7	PASS	

QA/QC Approval: _____

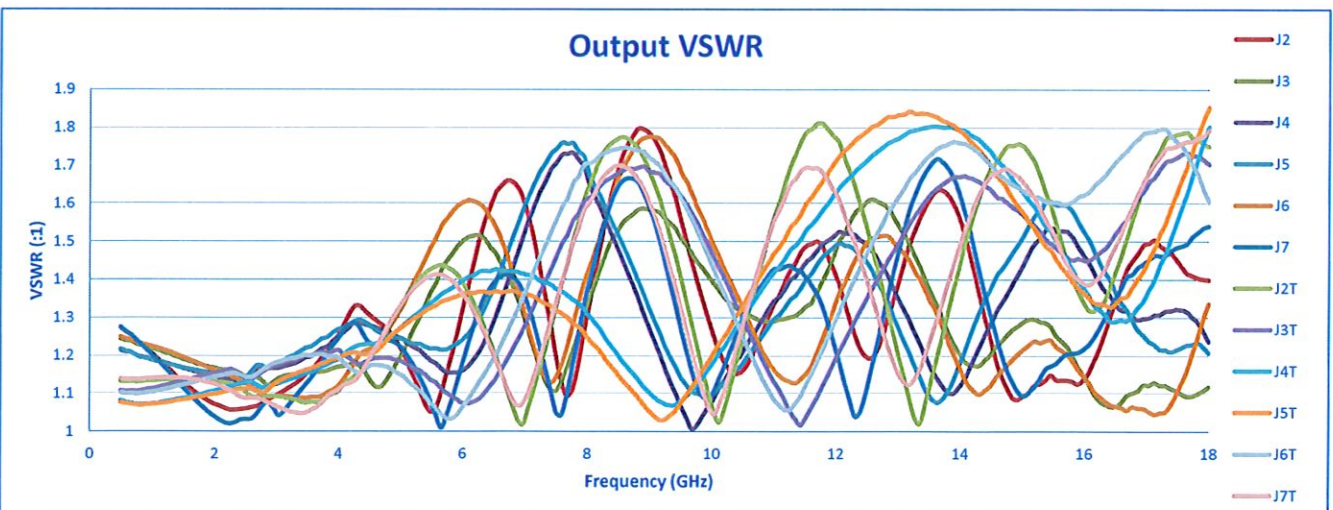
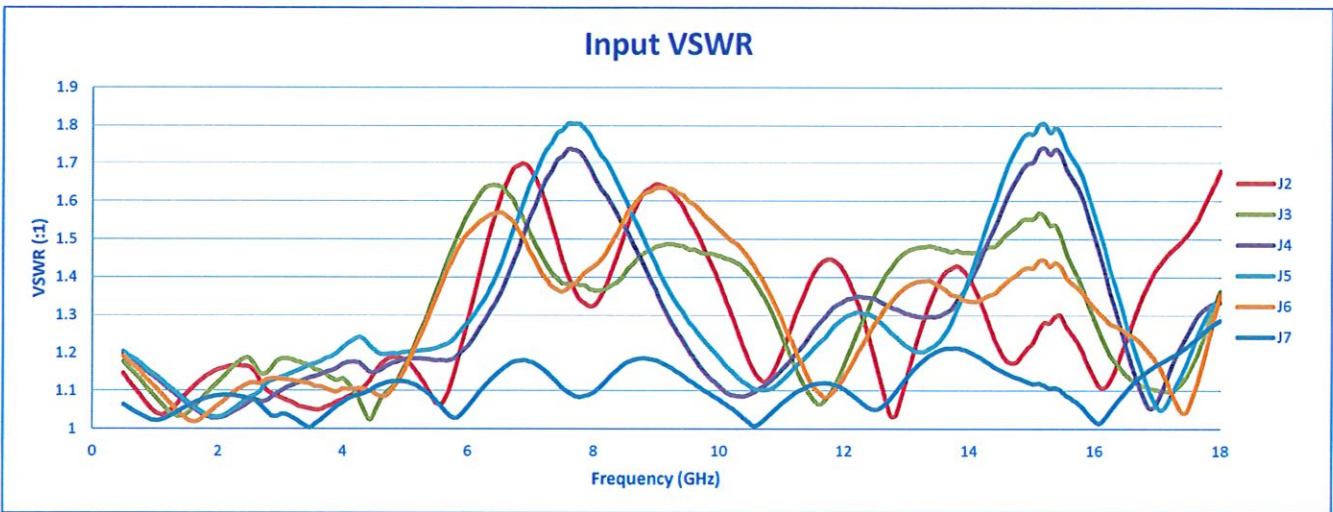
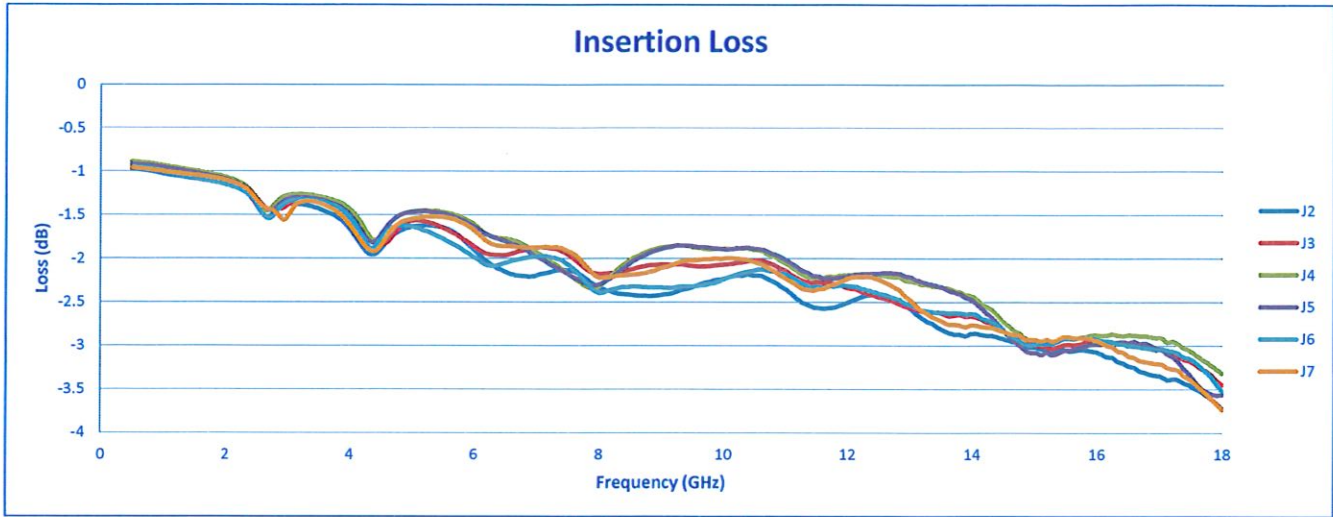
PMI
QA 2

Date: 10/27/2021



SUMMARY TEST DATA ON P6T-0R5G18G-60-T-SFF

PL34307/2142

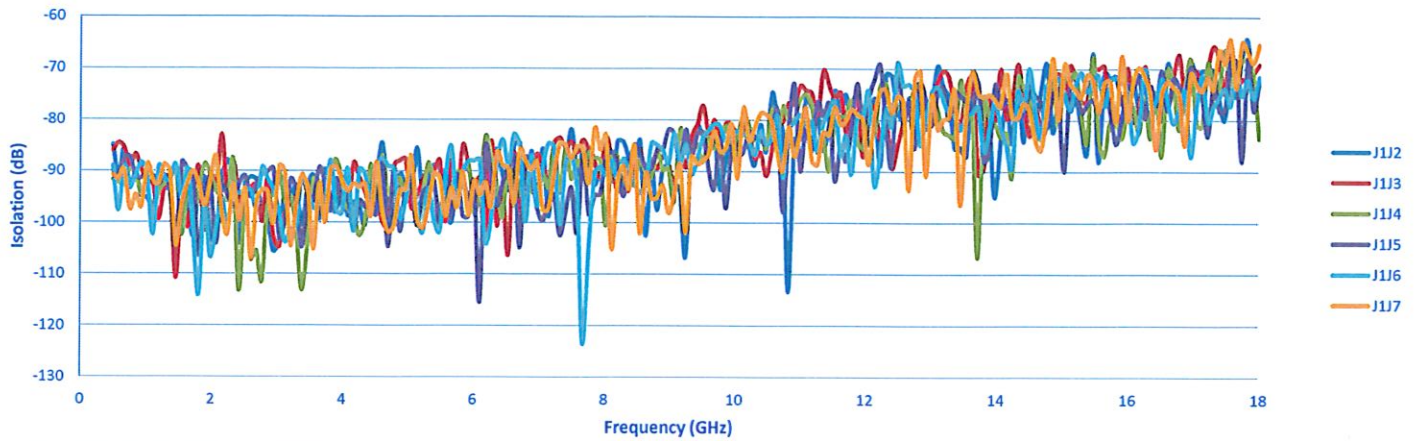




SUMMARY TEST DATA ON P6T-0R5G18G-60-T-SFF

PL34307/2142

Isolation



Isolation Port to Port

