



SUMMARY TEST DATA ON P16T-100M40G-100-T-I-292

Customer: _____
 SO No: _____
 Model No: P16T-100M40G-100-T-I-292
 Serial No: PL41650/2332

Tested By: S. O'Neill
 Temperature: +25° C
 Date: 8/3/2023
 Drawing No: 27632520 Rev: A1

TEST ITEM No.	PARAMETERS	SPECIFIED VALUE	TEST RESULTS	QA QC	
1	Frequency Range:	0.1 GHz to 40.0 GHz	0.1 GHz to 40.0 GHz	PMI QA2	
2	Insertion Loss:	10.0 dB @ 0.1 - 18 GHz Max 15 dB @ 18 - 40 GHz Max	7.8 dB @ 0.1 - 18 GHz 14.7 dB @ 18 - 40 GHz See Plot		
3	Isolation:	70 dB @ 0.1 - 1 GHz Min 80 dB @ 1 - 18 GHz Min 80 dB @ 18 - 40 GHz Min	101.1 dB @ 0.1 - 1 GHz 95.6 dB @ 1 - 18 GHz 80.3 dB @ 18 - 40 GHz See Plot		
4	VSWR ON (In/Out):	2.5:1 @ 0.1 - 18 GHz Max 2.75:1 @ 18 - 40 GHz Max	2.3:1 @ 0.1 - 18 GHz 2.5:1 @ 18 - 40 GHz See Plot		
5	VSWR Off (Out):	2.5:1 @ 0.1 - 18 GHz Max 2.75:1 @ 18 - 40 GHz Max	1.7:1 @ 0.1 - 18 GHz 2.1:1 @ 18 - 40 GHz See Plot		
6	Input Power:	20 dBm CW Max.	Pass See Typical Characteristics		
7	Switching Speed:	100 ns Max.	Pass See Typical Characteristics		
8	Power Supply:	+5 V @ 800 mA Max. -5 V @ 700 mA Max.	+5 V @ 734 mA -5 V @ 514 mA		PMI QA2

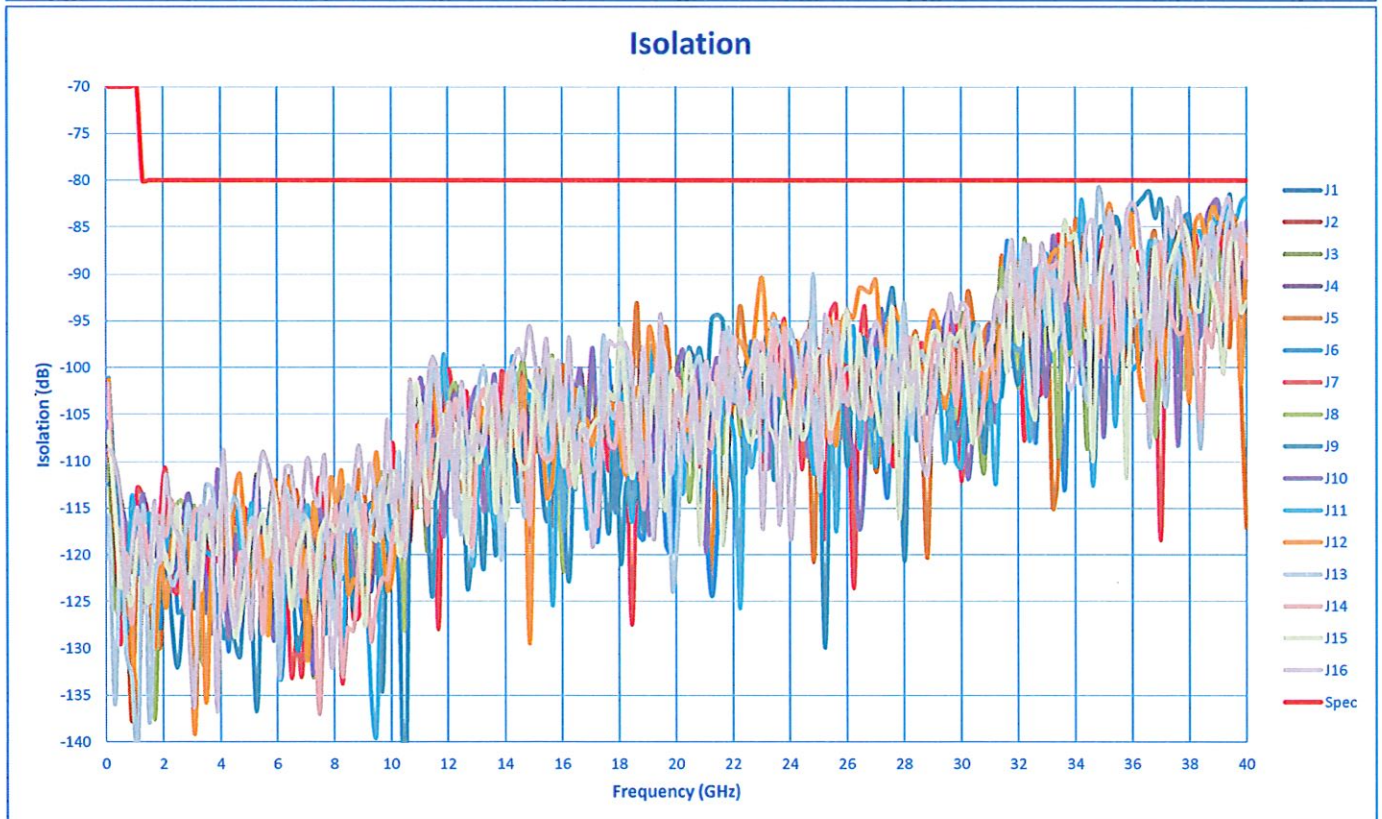
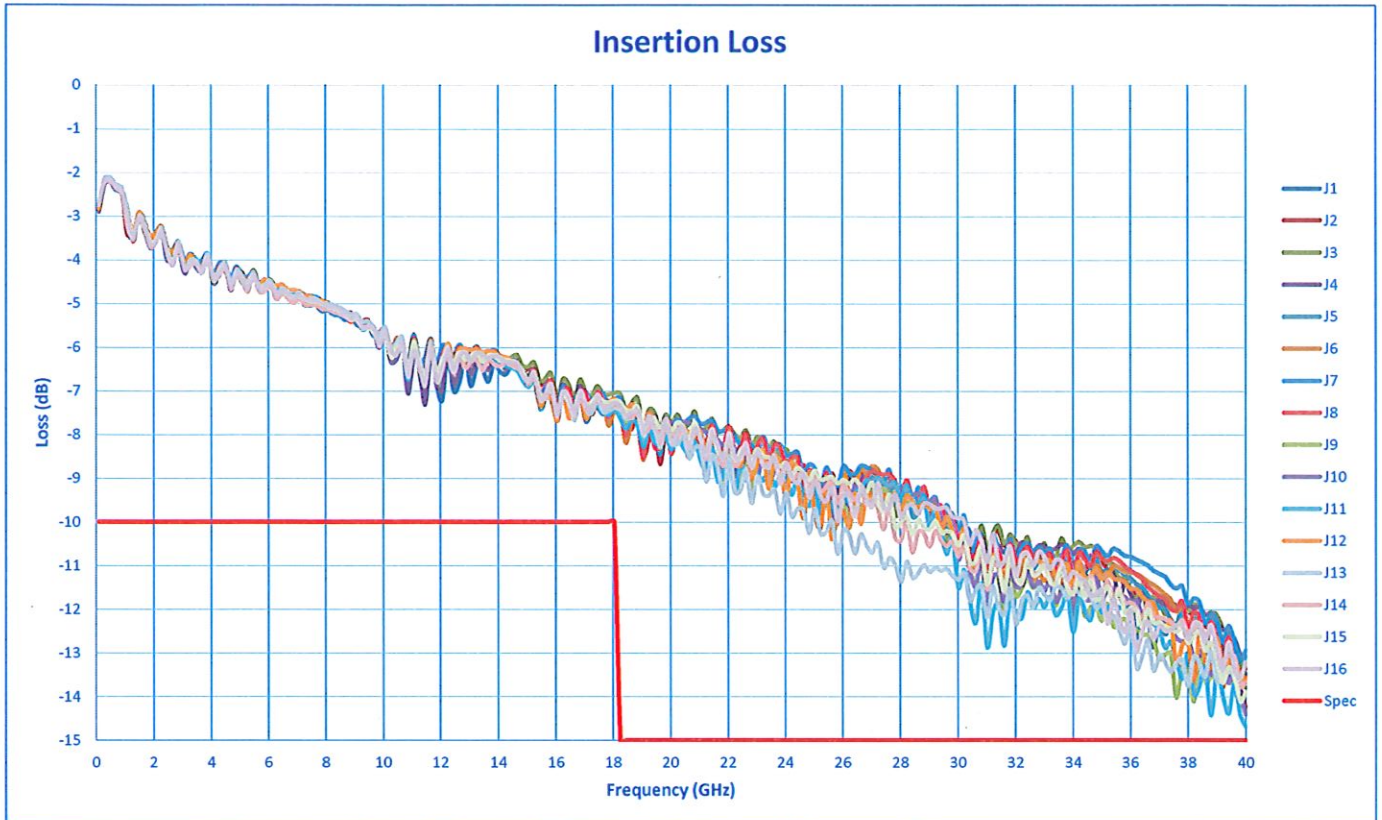
QA/QC Approval: PMI
 QA2

Date: 8/4/2023



SUMMARY TEST DATA ON P16T-100M40G-100-T-I-292

PL41650/2332



SUMMARY TEST DATA ON P16T-100M40G-100-T-I-292

PL41650/2332

