



SUMMARY TEST DATA
ON
PEC-20M3G-3T-SFF-LV-ROHS

Customer: _____
 SO No: _____
 Model No: PEC-20M3G-3T-SFF-LV-ROHS
 Serial No: PL44319/2406

Tested By: S. O'Neill
 Temperature: 25 °C
 Date: 2/8/2024
 Drawing No: 27643560 Rev: A1

TEST ITEM NO.	PARAMETERS	SPECIFIED VALUE	TEST RESULTS	QA QC
1	Frequency Range:	20 MHz to 3.0 GHz	20 MHz to 3.0 GHz	PMI QA2
2	Insertion Loss:	0.02 - 1.0 GHz 2.0 dB Max. 1.0 - 2.0 GHz 2.5 dB Max. 2.0 - 3.0 GHz 4.0 dB Max.	1.95 dB 1.84 dB 3.28 dB	PMI QA2
3	Isolation:	0.02-1.0 GHz 70dB Min. 1.0 - 2.0 GHz 60dB Min. 2.0 - 3.0 GHz 50 dB Min.	85.51 dB 83.7 dB 72.63 dB	
4	VSWR: (0.02-3.0 GHz)	2.0:1 Max.	1.94:1 See Plot	
6	Video Transients	ABOVE 20 MHz -100 dBm BELOW 20 MHz -75 dBm	PASS See Typical Characteristics	
7	Control	TTL1 "0", TTL2 "0" J1-J4 TTL1 "0", TTL2 "1" J2-J4 TTL1 "1", TTL2 "0" J3-J4 TTL1 "1", TTL2 "1" UNDEFINED	PASS	PMI QA2
8	Power Supply:	+5V @ 250 mA Max. -12V @ 120 mA Max.	+5V @ 140 mA -12V @ 110 mA	

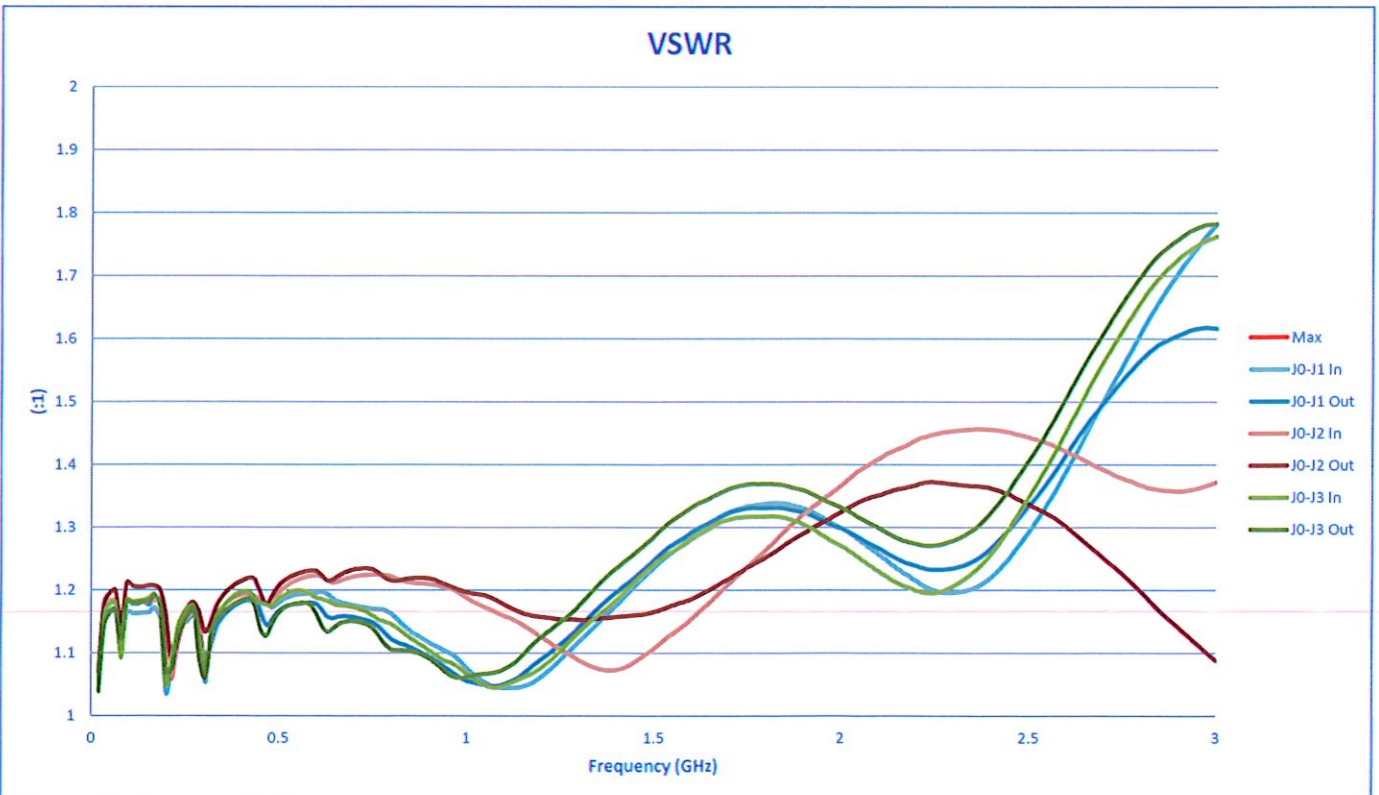
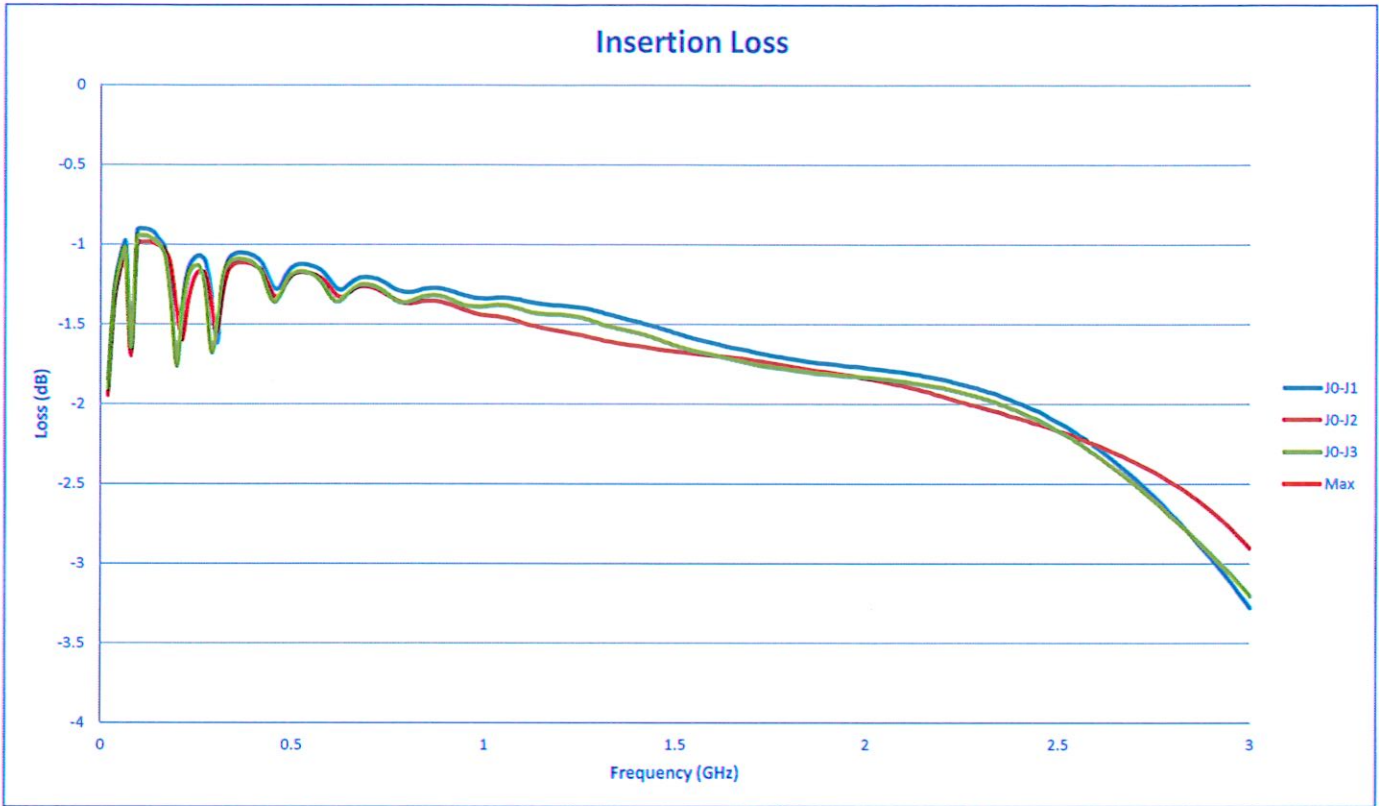
QA/QC Approval: PMI QA2

Date: 2/8/2024



SUMMARY TEST DATA
ON
PEC-20M3G-3T-SFF-LV-ROHS

PL44319/2406





SUMMARY TEST DATA
ON
PEC-20M3G-3T-SFF-LV-ROHS

PL44319/2406

