



**SUMMARY TEST DATA**  
**ON**  
**PEC-20M3G-3T-SFF-LV-ROHS**

Customer: \_\_\_\_\_  
 SO No: \_\_\_\_\_  
 Model No: PEC-20M3G-3T-SFF-LV-ROHS  
 Serial No: PL44998/2411

Tested By: S. O'Neill  
 Temperature: 25 °C  
 Date: 3/11/2023  
 Drawing No: 27643560 Rev: A1

TEST ITEM NO.	PARAMETERS	SPECIFIED VALUE	TEST RESULTS	QA QC
1	Frequency Range:	20 MHz to 3.0 GHz	20 MHz to 3.0 GHz	PMI QA2
2	Insertion Loss:	0.02 - 1.0 GHz 2.0 dB Max. 1.0 - 2.0 GHz 2.5 dB Max. 2.0 - 3.0 GHz 4.0 dB Max.	1.9 dB 1.85 dB 3.32 dB	
3	Isolation:	0.02-1.0 GHz 70dB Min. 1.0 - 2.0 GHz 60dB Min. 2.0 - 3.0 GHz 50 dB Min.	83.19 dB 82.44 dB 72.06 dB	
4	VSWR: (0.02-3.0 GHz)	2.0:1 Max.	1.98:1 See Plot	
6	Video Transients	ABOVE 20 MHz -100 dBm BELOW 20 MHz -75 dBm	PASS See Typical Characteristics	
7	Control	TTL1 "0", TTL2 "0" J1-J4 TTL1 "0", TTL2 "1" J2-J4 TTL1 "1", TTL2 "0" J3-J4 TTL1 "1", TTL2 "1" UNDEFINED	PASS	PMI QA2
8	Power Supply:	+5V @ 250 mA Max. -12V @ 120 mA Max.	+5V @ 140 mA -12V @ 110 mA	

QA/QC Approval:

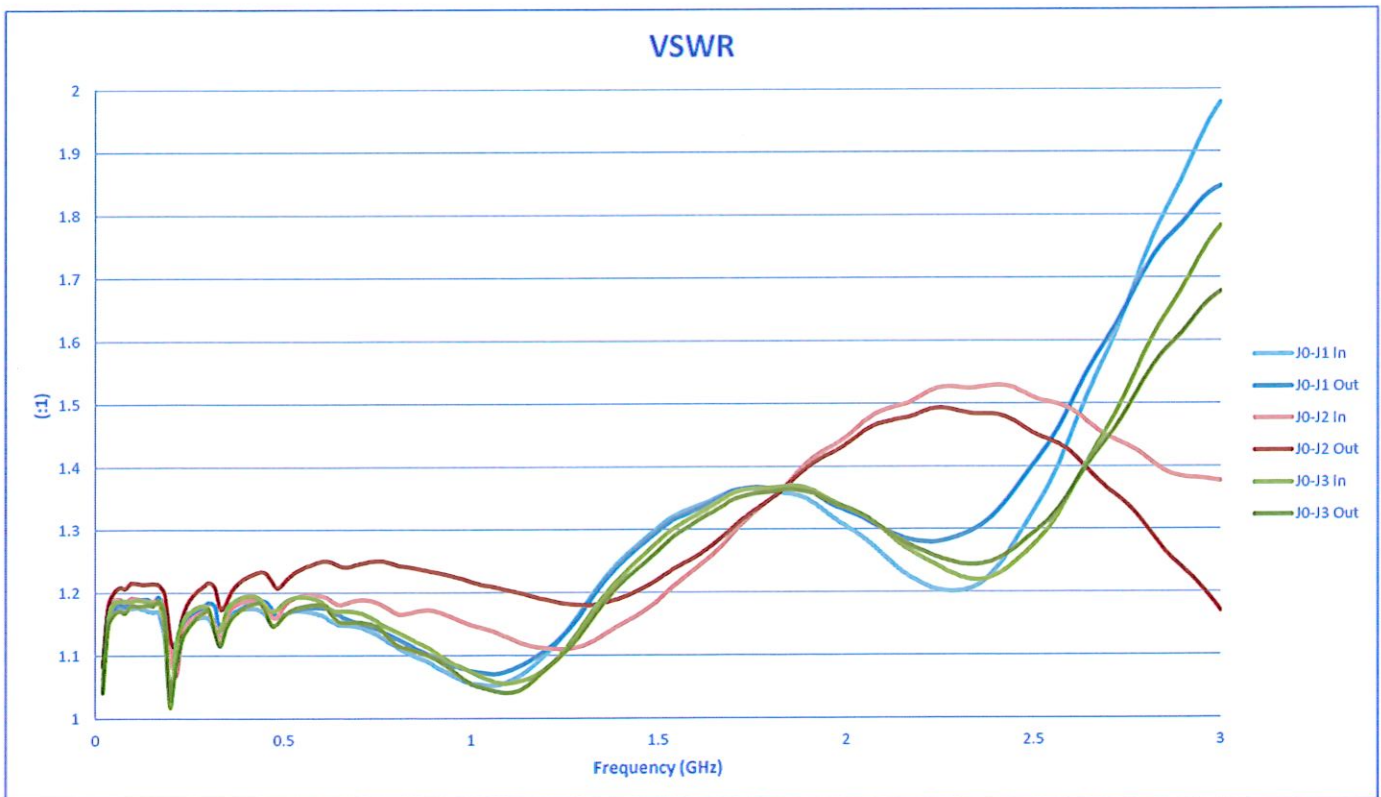
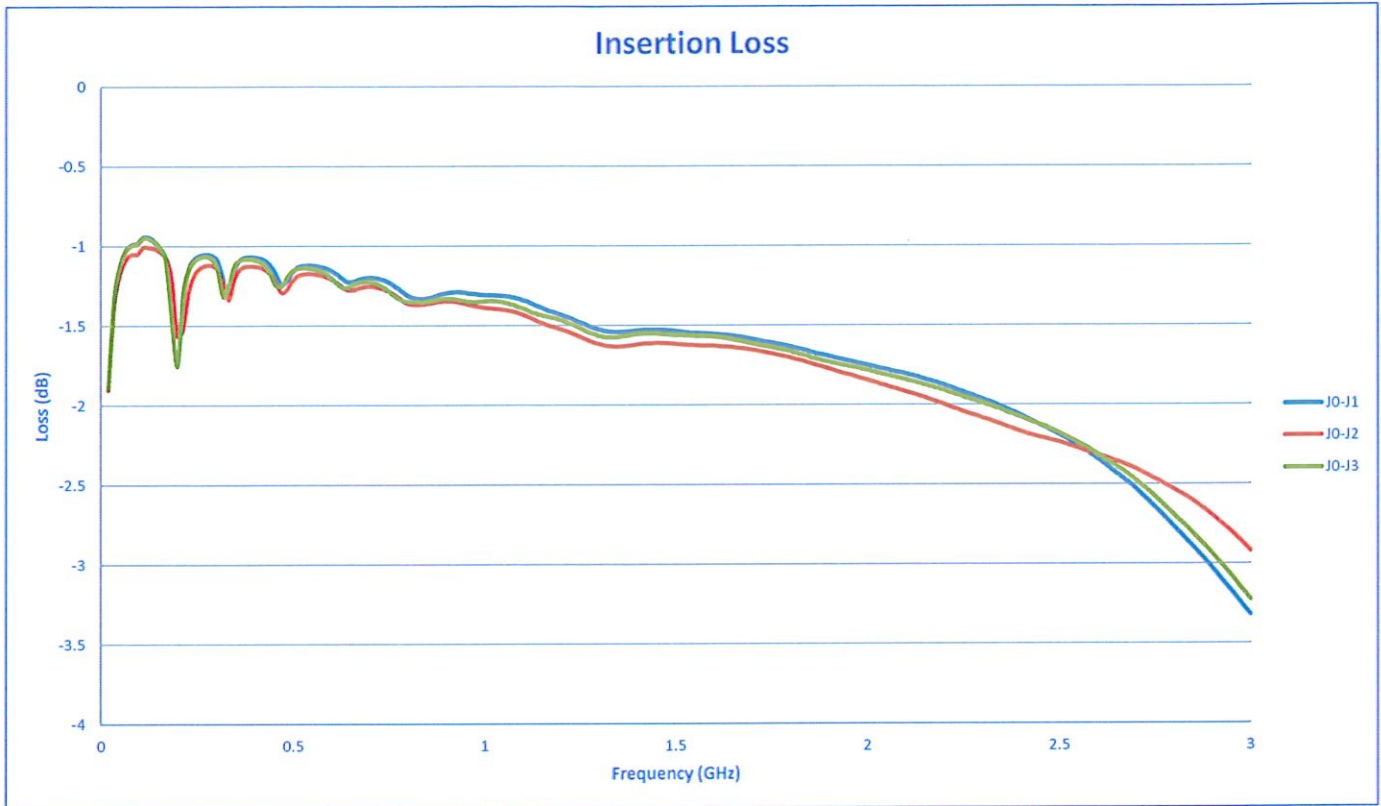
PMI  
QA2

Date: 3/11/2024



SUMMARY TEST DATA  
ON  
PEC-20M3G-3T-SFF-LV-ROHS

PL44998/2411





SUMMARY TEST DATA  
ON  
PEC-20M3G-3T-SFF-LV-ROHS

PL44998/2411

