

**SUMMARY TEST DATA
ON
P16T-100M50G-100-T-DEC**

Customer: _____
SO No: _____
Model No: P16T-100M50G-100-T-DEC
Serial No: PL45110/2411

Tested By: S. O'Neill
Temperature: +25° C
Date: 3/16/2024
Drawing No: 27635060 Rev: B1

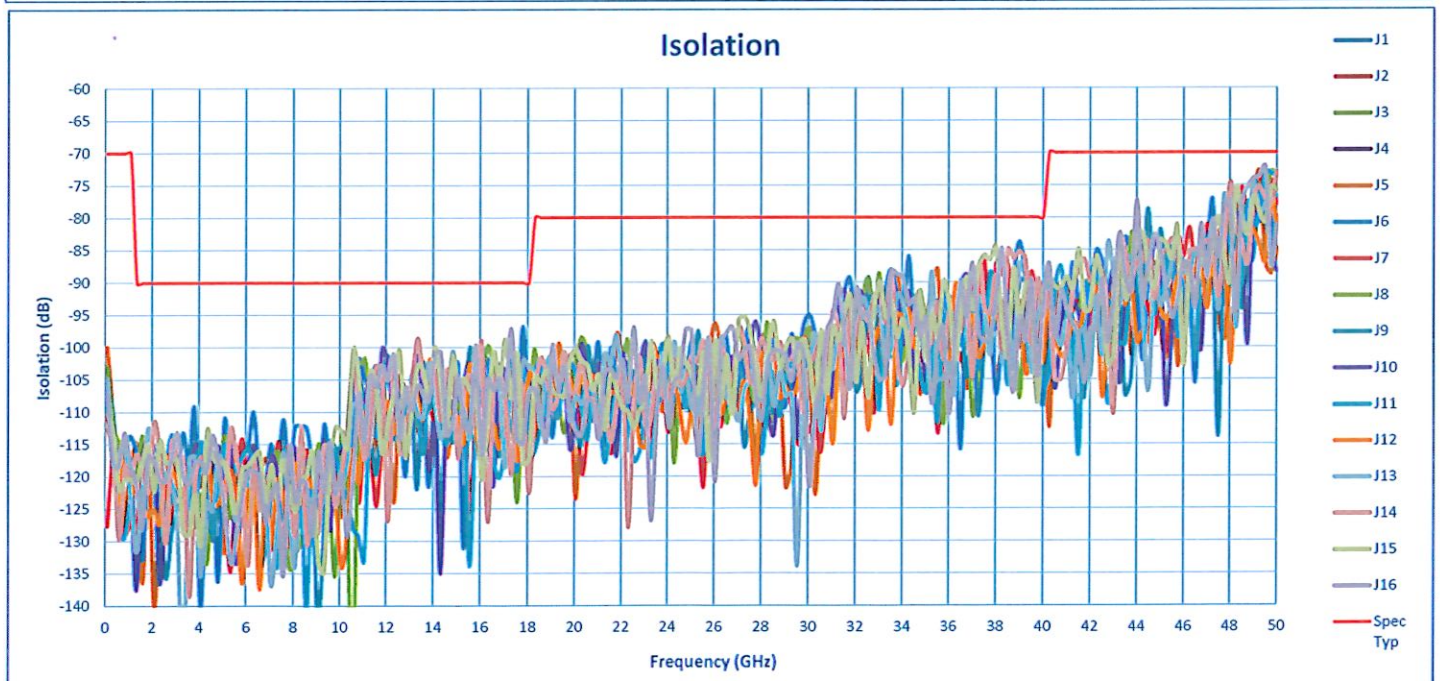
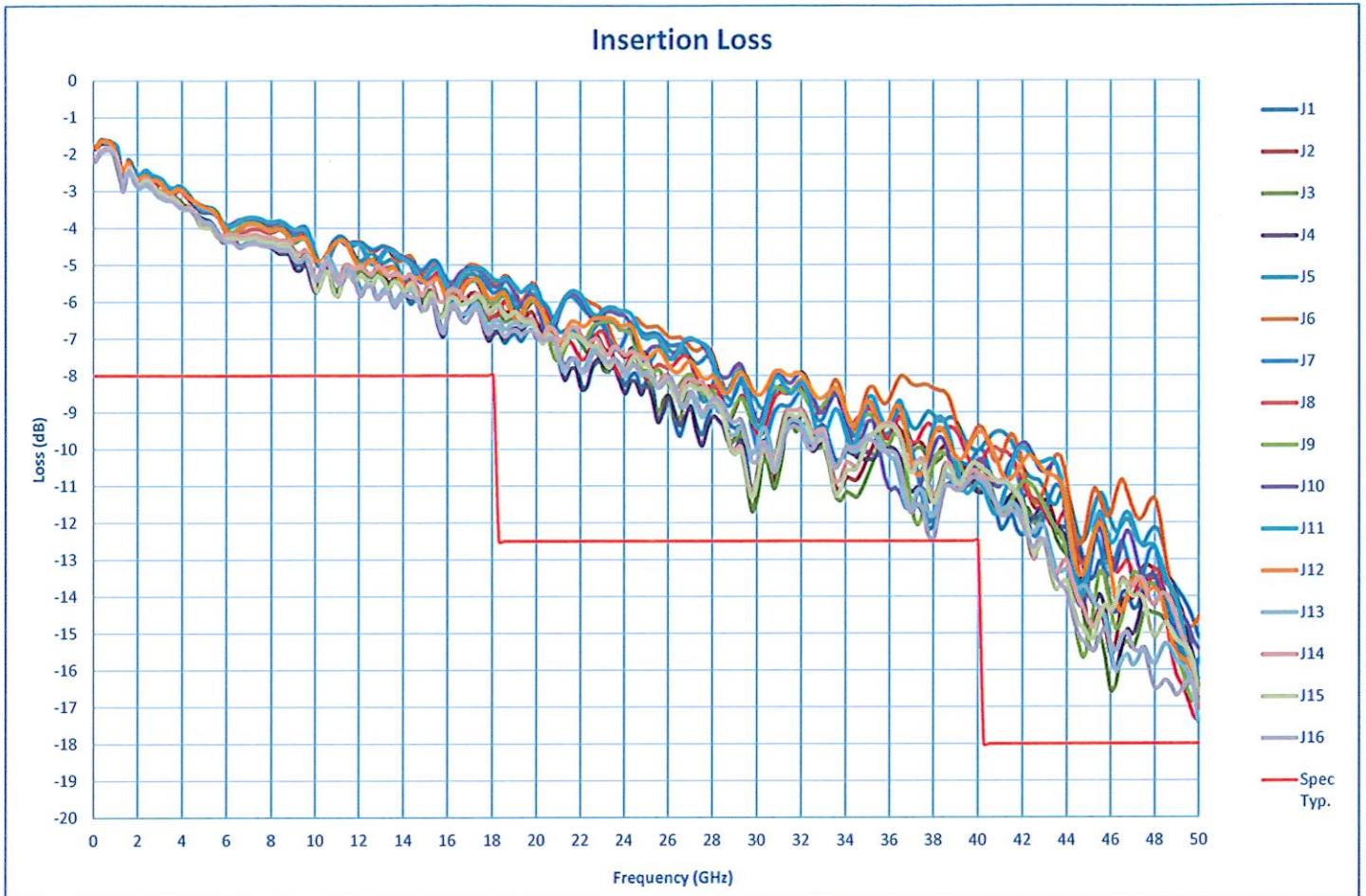
TEST ITEM No.	PARAMETERS	SPECIFIED VALUE	TEST RESULTS	QA QC																																																																																										
1	Frequency Range:	0.1 GHz to 50.0 GHz	0.1 GHz to 50.0 GHz	PMI QA2																																																																																										
2	Insertion Loss:	8.0 dB @ 0.1 - 18 GHz Typ. 12.5 dB @ 18 - 40 GHz Typ. 18.0 dB @ 40 - 50 GHz Typ.	7.1 dB @ 0.1 - 18 GHz 12.4 dB @ 18 - 40 GHz 17.4 dB @ 40 - 50 GHz See Plot																																																																																											
3	Isolation:	70 dB @ 0.1 - 1 GHz Typ. 90 dB @ 1 - 18 GHz Typ. 80 dB @ 18 - 40 GHz Typ. 70 dB @ 40 - 50 GHz Typ.	100 dB @ 0.1 - 1 GHz 96.9 dB @ 1 - 18 GHz 81.7 dB @ 18 - 40 GHz 72.2 dB @ 40 - 50 GHz See Plot																																																																																											
4	VSWR ON (In/Out):	2.5:1 @ 0.1 - 18 GHz Typ. 3.0:1 @ 18 - 40 GHz Typ. 3.5:1 @ 40 - 50 GHz Typ.	2.4:1 @ 0.1 - 18 GHz 3.1:1 @ 18 - 40 GHz 3.2:1 @ 40 - 50 GHz See Plot																																																																																											
5	VSWR Off (Out):	2.5:1 @ 0.1 - 18 GHz Typ. 3.0:1 @ 18 - 40 GHz Typ. 3.5:1 @ 40 - 50 GHz Typ.	2.1:1 @ 0.1 - 18 GHz 2.6:1 @ 18 - 40 GHz 2.4:1 @ 40 - 50 GHz See Plot																																																																																											
6	Input Power:	20 dBm CW Max.	Pass See Typical Characteristics																																																																																											
7	Switching Speed:	100 ns Max.	Pass See Typical Characteristics																																																																																											
8	Power Supply:	+5 V @ 1100 mA Max. -12 V @ 720 mA Max.	+5 V @ 1032 mA -12 V @ 340 mA																																																																																											
9	Control Logic:	<table border="1"> <thead> <tr> <th colspan="5">Logic Table</th> </tr> <tr> <th>C1</th> <th>C2</th> <th>C3</th> <th>C4</th> <th>Connector</th> </tr> </thead> <tbody> <tr><td>0</td><td>0</td><td>0</td><td>0</td><td>J1 On</td></tr> <tr><td>0</td><td>0</td><td>0</td><td>1</td><td>J2 On</td></tr> <tr><td>0</td><td>0</td><td>1</td><td>0</td><td>J3 On</td></tr> <tr><td>0</td><td>0</td><td>1</td><td>1</td><td>J4 On</td></tr> <tr><td>0</td><td>1</td><td>0</td><td>0</td><td>J5 On</td></tr> <tr><td>0</td><td>1</td><td>0</td><td>1</td><td>J6 On</td></tr> <tr><td>0</td><td>1</td><td>1</td><td>0</td><td>J7 On</td></tr> <tr><td>0</td><td>1</td><td>1</td><td>1</td><td>J8 On</td></tr> <tr><td>1</td><td>0</td><td>0</td><td>0</td><td>J9 On</td></tr> <tr><td>1</td><td>0</td><td>0</td><td>1</td><td>J10 On</td></tr> <tr><td>1</td><td>0</td><td>1</td><td>0</td><td>J11 On</td></tr> <tr><td>1</td><td>0</td><td>1</td><td>1</td><td>J12 On</td></tr> <tr><td>1</td><td>1</td><td>0</td><td>0</td><td>J13 On</td></tr> <tr><td>1</td><td>1</td><td>0</td><td>1</td><td>J14 On</td></tr> <tr><td>1</td><td>1</td><td>1</td><td>0</td><td>J15 On</td></tr> <tr><td>1</td><td>1</td><td>1</td><td>1</td><td>J16 On</td></tr> </tbody> </table>			Logic Table					C1	C2	C3	C4	Connector	0	0	0	0	J1 On	0	0	0	1	J2 On	0	0	1	0	J3 On	0	0	1	1	J4 On	0	1	0	0	J5 On	0	1	0	1	J6 On	0	1	1	0	J7 On	0	1	1	1	J8 On	1	0	0	0	J9 On	1	0	0	1	J10 On	1	0	1	0	J11 On	1	0	1	1	J12 On	1	1	0	0	J13 On	1	1	0	1	J14 On	1	1	1	0	J15 On	1	1	1	1	J16 On
Logic Table																																																																																														
C1	C2	C3	C4	Connector																																																																																										
0	0	0	0	J1 On																																																																																										
0	0	0	1	J2 On																																																																																										
0	0	1	0	J3 On																																																																																										
0	0	1	1	J4 On																																																																																										
0	1	0	0	J5 On																																																																																										
0	1	0	1	J6 On																																																																																										
0	1	1	0	J7 On																																																																																										
0	1	1	1	J8 On																																																																																										
1	0	0	0	J9 On																																																																																										
1	0	0	1	J10 On																																																																																										
1	0	1	0	J11 On																																																																																										
1	0	1	1	J12 On																																																																																										
1	1	0	0	J13 On																																																																																										
1	1	0	1	J14 On																																																																																										
1	1	1	0	J15 On																																																																																										
1	1	1	1	J16 On																																																																																										

QA/QC Approval:

PMI
QA2

Date: 3/18/2024

**SUMMARY TEST DATA
ON
P16T-100M50G-100-T-DEC**



**SUMMARY TEST DATA
ON
P16T-100M50G-100-T-DEC**

