



## SUMMARY TEST DATA ON PMC-2D22D4-6D8-SFF

Customer: \_\_\_\_\_  
 SO No: \_\_\_\_\_  
 Model No: PMC-2D22D4-6D8-SFF  
 Serial No: PL47219/2430

Tested By: K Craven  
 Temperature: +25°C  
 Date: 7/19/2024  
 Drawing No: 27648400      REV: A1

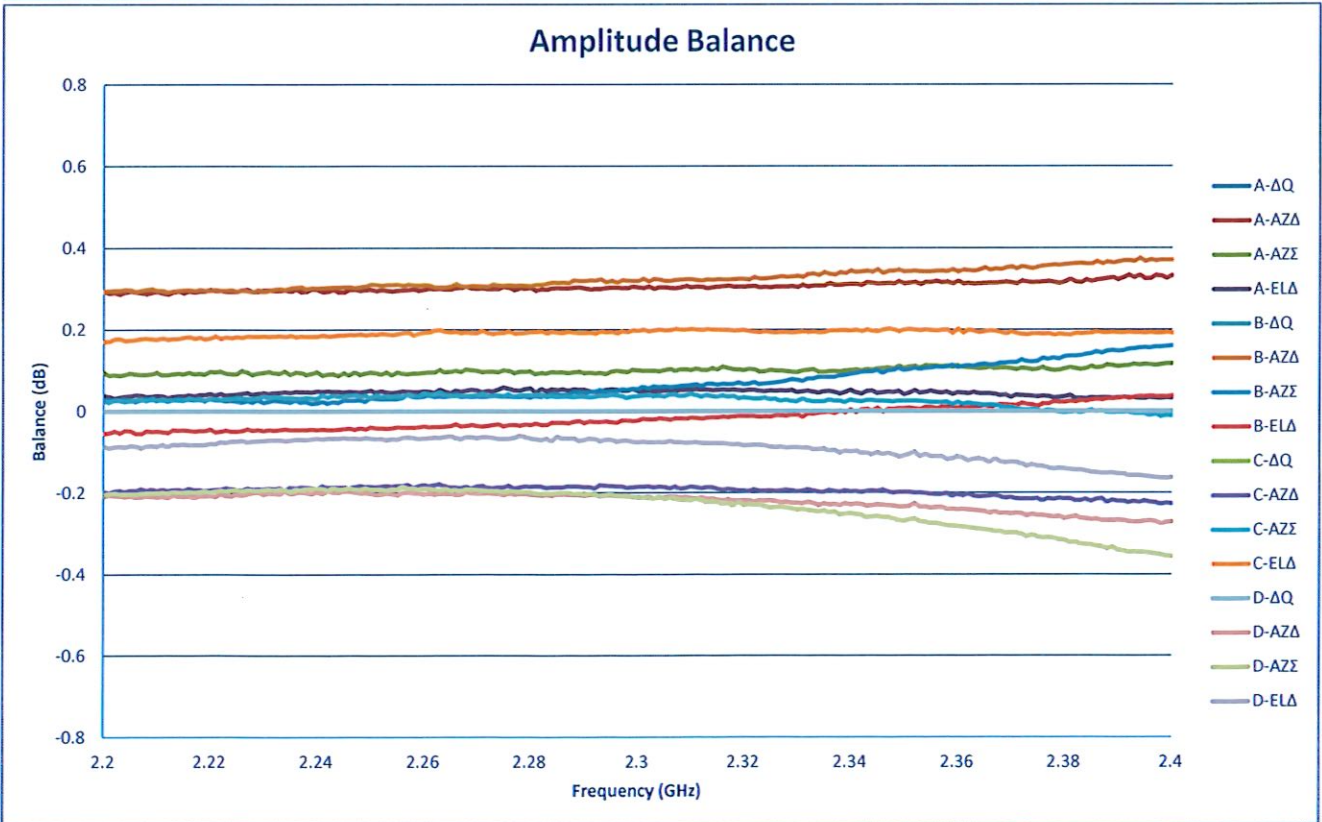
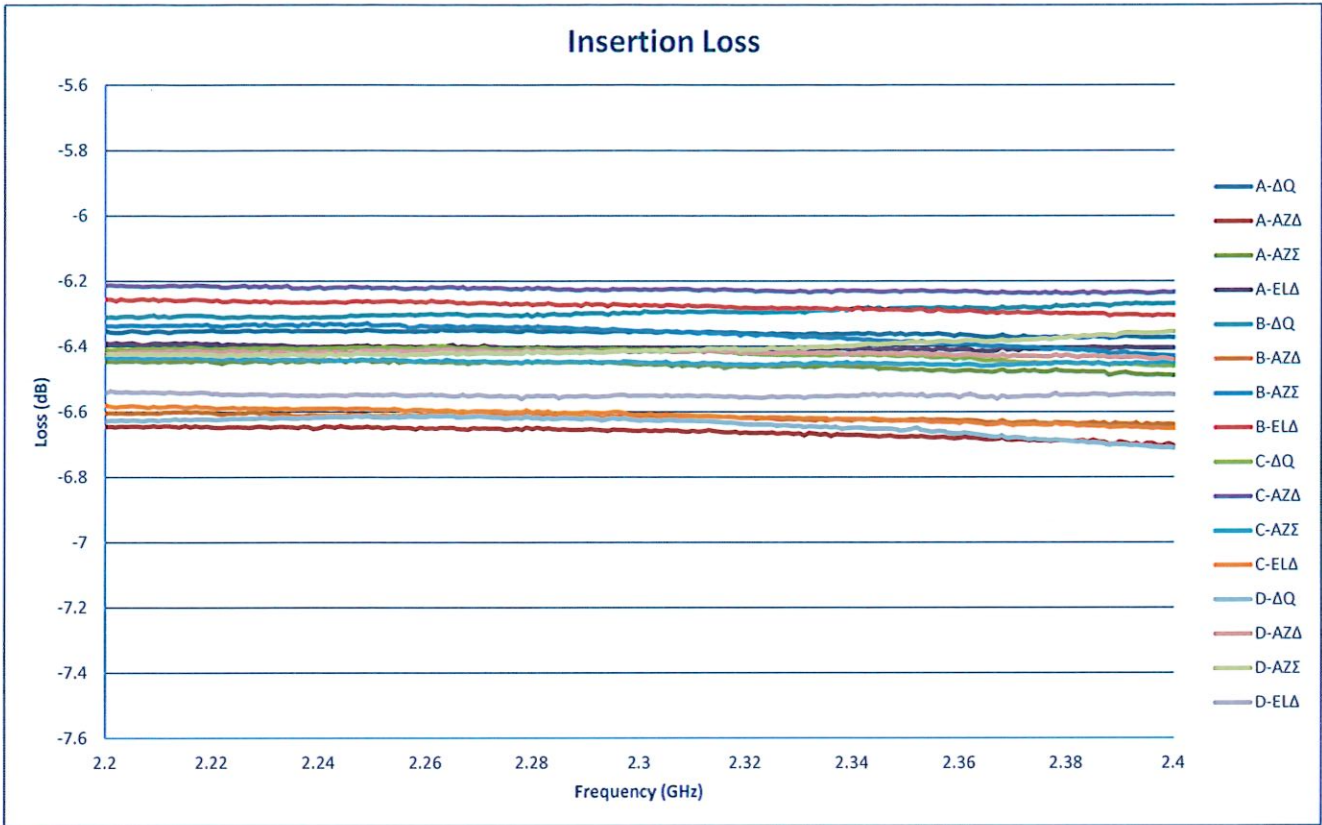
TEST ITEM NO.	PARAMETERS	SPECIFIED VALUE	Test Results	QA QC
1	Frequency Range:	2.2 GHz to 2.4 GHz	2.2 GHz to 2.4 GHz	PMI QA2
2	Insertion Loss:	6.8 dB Max.	6.71 dB See Graph	
3	Amplitude Balance:	±0.5 dB Max.	+0.37 dB -0.36 dB See Graph	
4	Phase Balance:	±5° Max.	±0.87°	
5	Isolation:	20 dB Min.	21 dB	
6	VSWR:	1.3:1 Typ. 1.5:1 Max.	1.29:1 See Graph	
7	Power Handling:	Average: 10 W Max. (Port A, B, C, & D) Peak: 0.1 kW Max.	See Typical Characteristics	

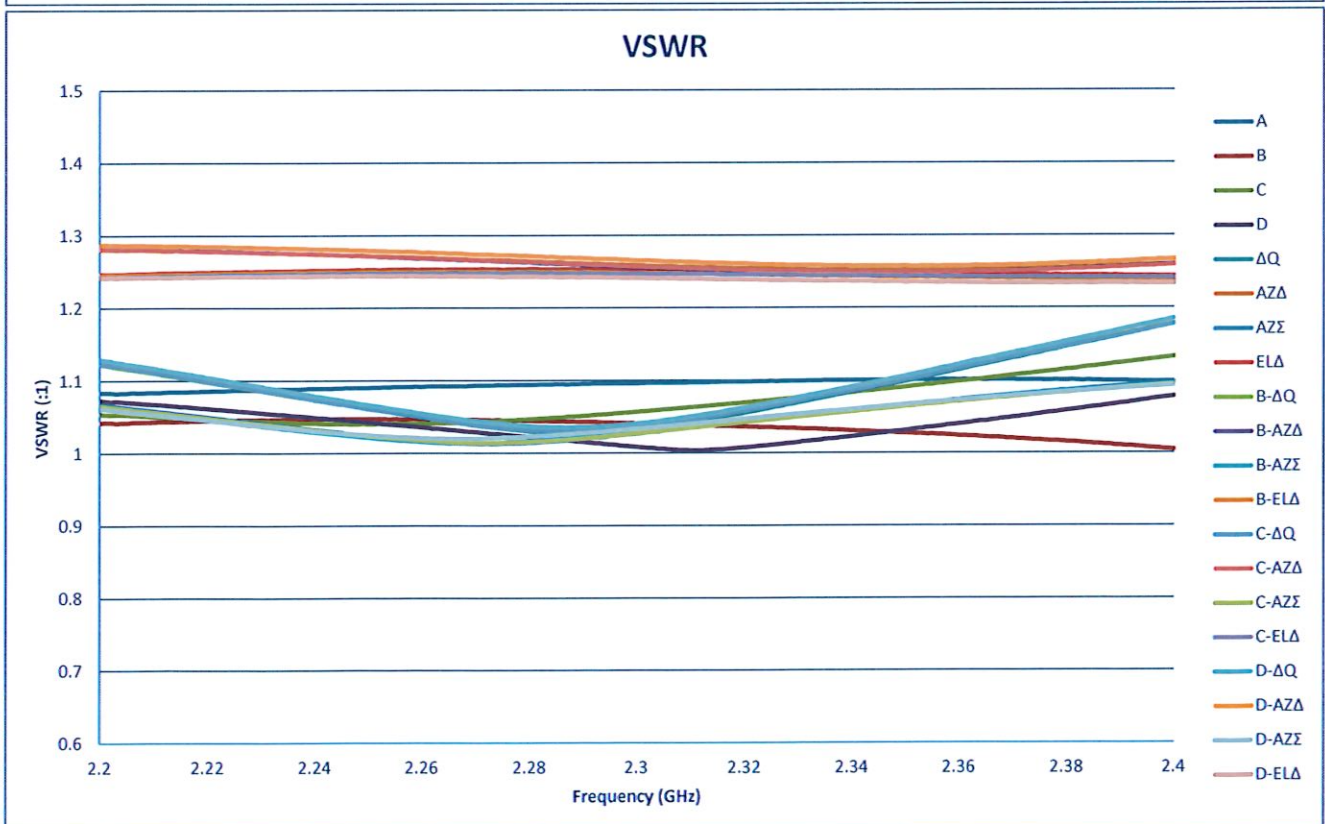
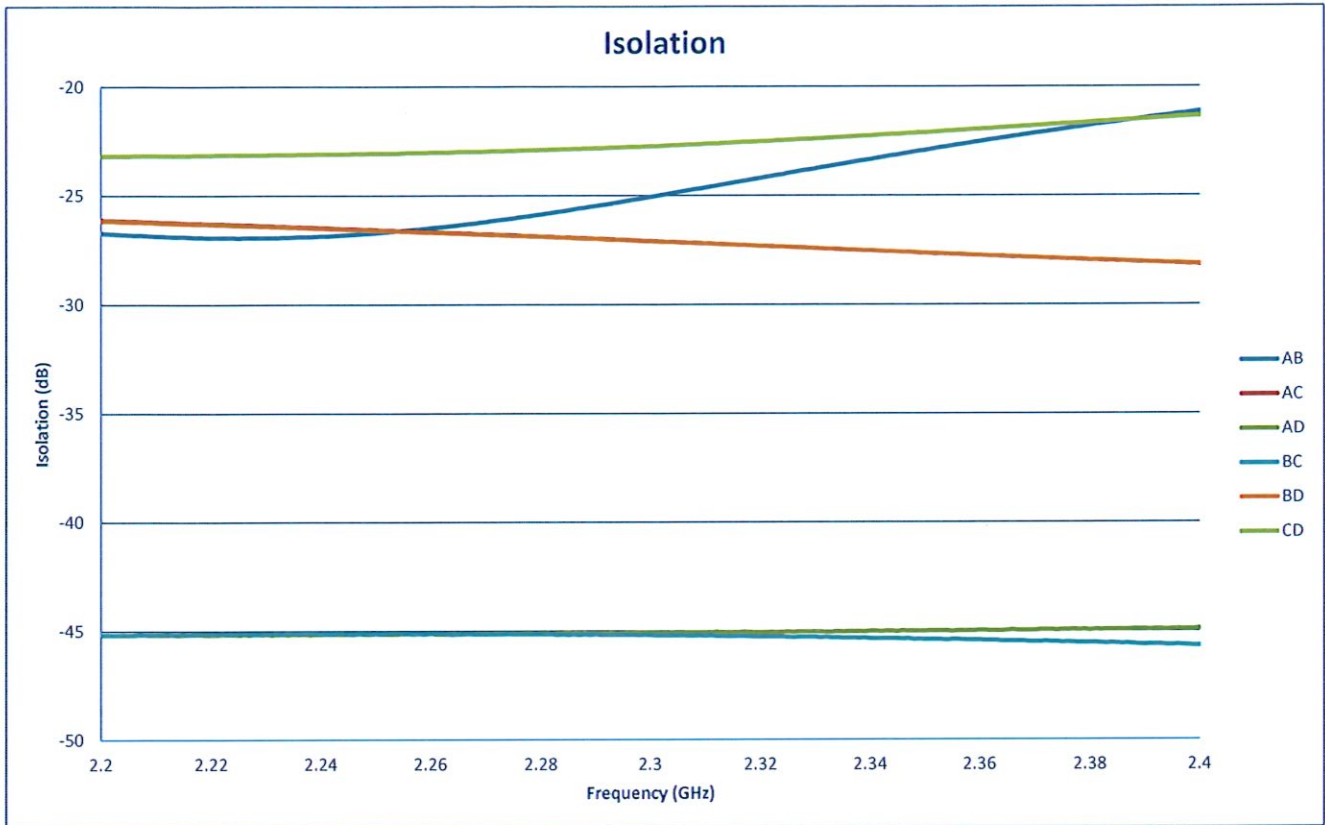
QA/QC Approval:       PMI  
QA2

Date: 7/29/2024

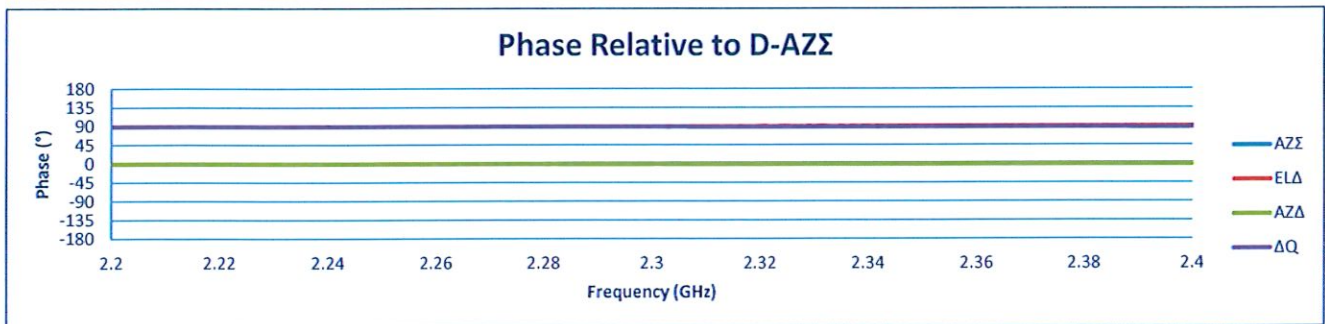
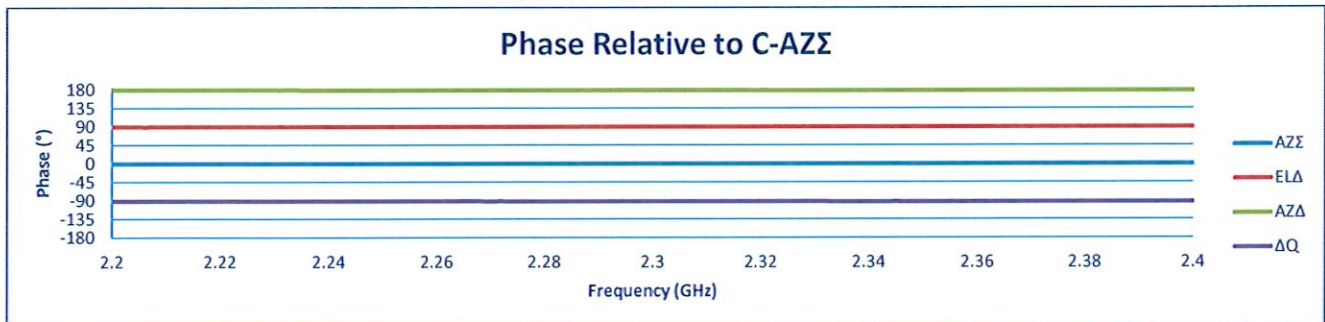
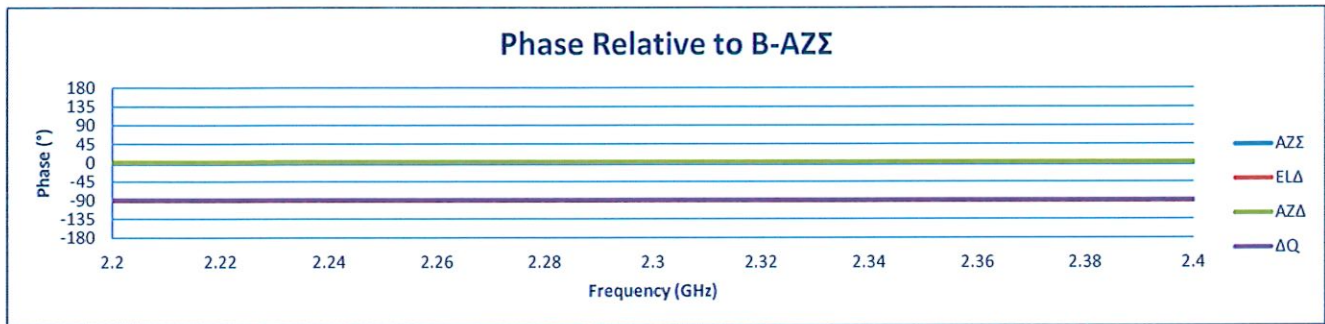
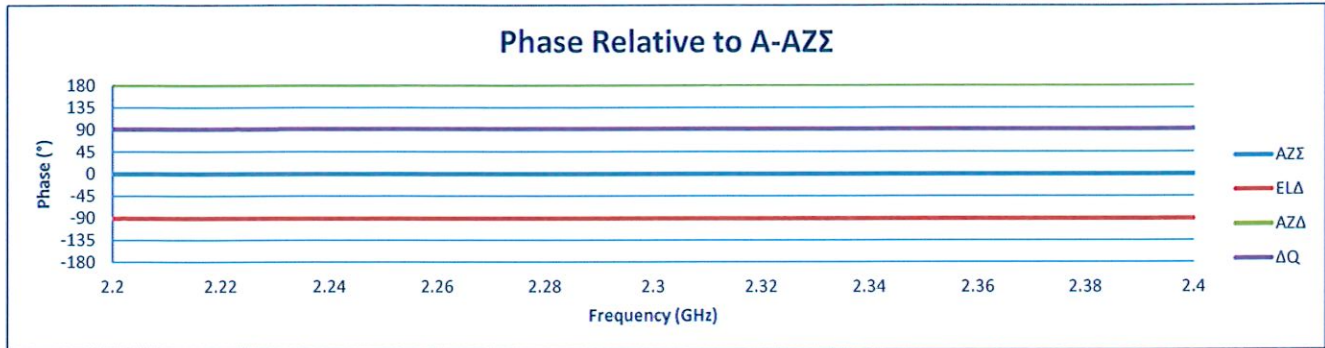
7309-A Grove Road Frederick, MD 21704 USA Phone: (301) 662-5019 Fax: (301) 662-1731  
 Email: sales@pmi-rf.com

**SUMMARY TEST DATA  
ON  
PMC-2D22D4-6D8-SFF**





**SUMMARY TEST DATA  
ON  
PMC-2D22D4-6D8-SFF**



Phase Data Relative to AZΣ	A	B	C	D	AZΣ	ELΔ	AZΔ	ΔQ	
	A	-	Isolation	Isolation	Isolation	0°	-91°	182°	92°
	B	Isolation	-	Isolation	Isolation	0°	-91°	2°	-89°
	C	Isolation	Isolation	-	Isolation	0°	90°	179°	-92°
	D	Isolation	Isolation	Isolation	-	0°	90°	-1°	89°
	AZΣ	0°	0°	0°	0°	-	Isolation	Isolation	Isolation
	ELΔ	-91°	-91°	90°	90°	Isolation	-	Isolation	Isolation
	AZΔ	182°	2°	179°	-1°	Isolation	Isolation	-	Isolation
	ΔQ	92°	-89°	-92°	89°	Isolation	Isolation	Isolation	-