

**SUMMARY TEST DATA
ON
P4T-100M50G-100-T-RD**

Customer: _____
 SO No: _____
 Model No: P4T-100M50G-100-T-RD
 Serial No: PL49632/2442

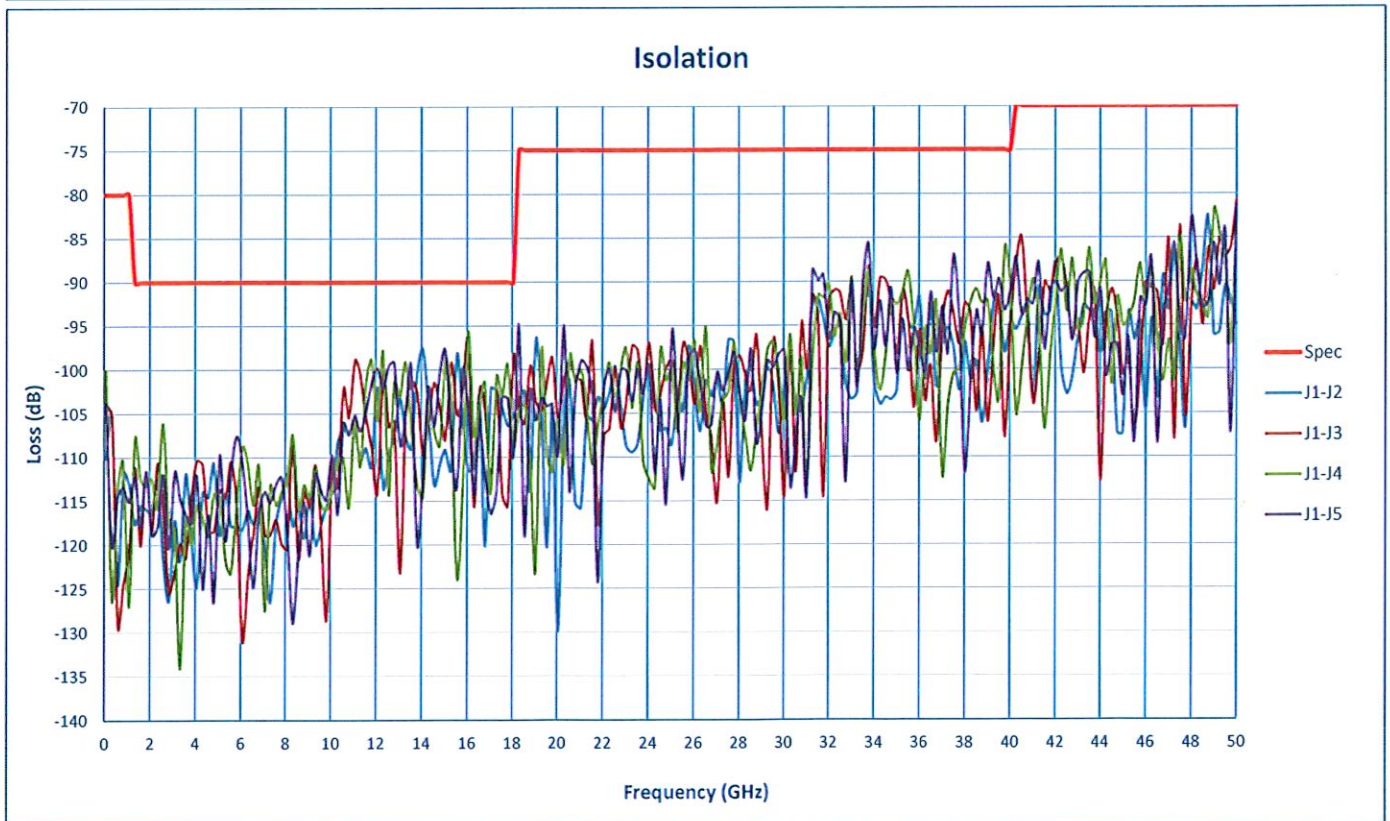
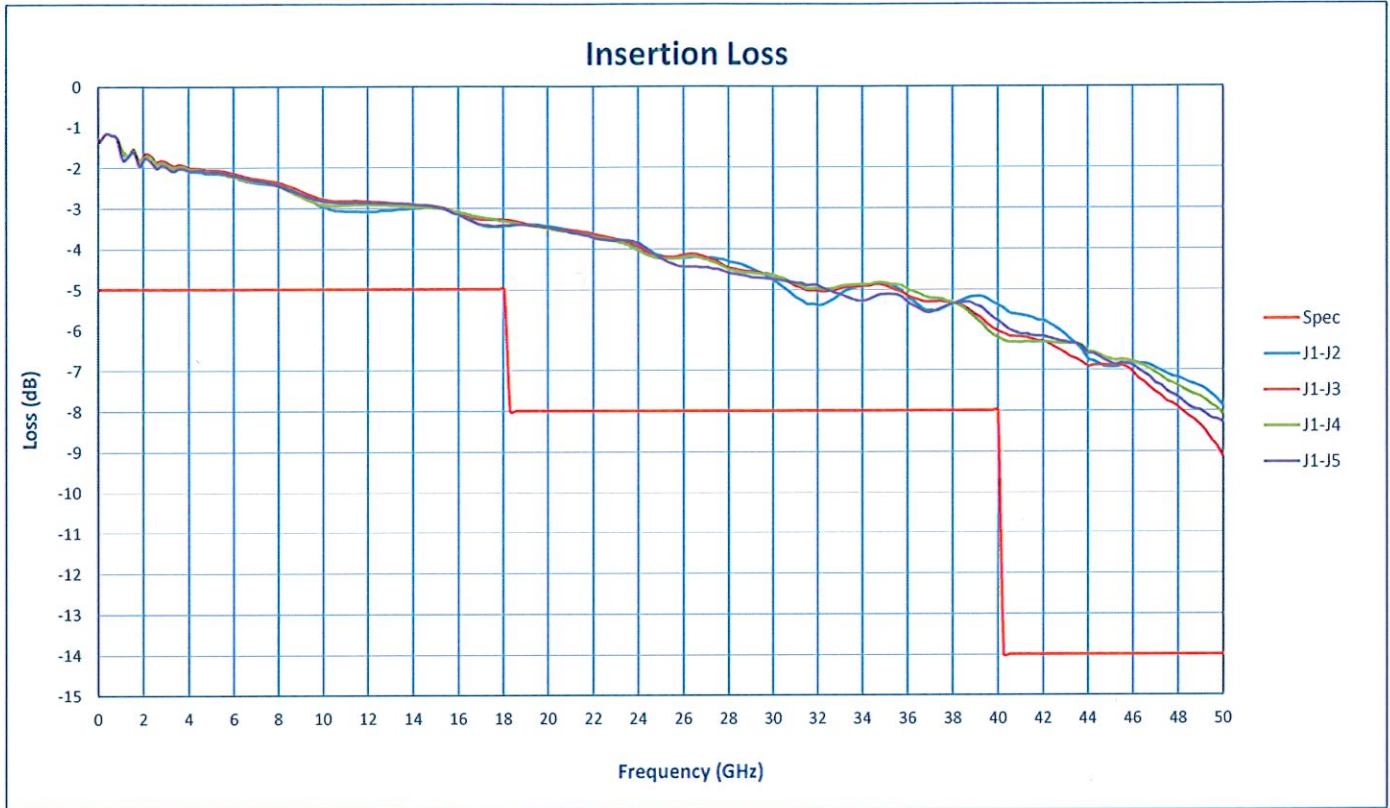
Tested By: S. O'Neill
 Temperature: +25°C
 Date: 10/16/2024
 Drawing No: 27627786 REV: B1

TEST ITEM NO.	PARAMETERS	SPECIFIED VALUE	TEST RESULTS	QA
			+25°C	QC
1	Frequency Range:	0.1 to 50 GHz	0.1 to 50 GHz	PMI QA4
2	Insertion Loss:	5.0 dB (0.1 to 18GHz) MAX	3.46 dB	
		8.0 dB (18 to 40GHz) MAX	6.19 dB	
		14.0 dB (40 to 50GHz) MAX	9.12 dB	
			See Graphs	
3	VSWR Input/Output	2.2:1 (0.1 to 18GHz) MAX	1.77 :1	
		2.7:1 (18 to 40GHz) MAX	2 :1	
		3.2:1 (40 to 50GHz) MAX	2.1 :1	
			See Graphs	
4	Isolation:	80 dB (0.1 to 1GHz) Min.	100.06 dB	
		90 dB (1 to 18GHz) Min.	95.7 dB	
		75 dB (18 to 40GHz) Min.	85.8 dB	
		70 dB (40 to 50GHz) Min.	80.79 dB	
			See Graphs	
5	Switching Speed	50 ns Max.	Pass See Typical Characteristics	
6	Input Power:	+20 dBm CW Max.	Pass See Typical Characteristics	
7	Control Signal:	See TTL Logic Table	Pass	
8	DC Supply:	+5 VDC @ 200 mA Max. -5 VDC @ 200 mA Max.	+5 VDC @ 160 mA -5 VDC @ 131 mA	PMI QA4

QA/QC Approval: *Cameron Kelly*

Date: 10/15/24

SUMMARY TEST DATA ON P4T-100M50G-100-T-RD



SUMMARY TEST DATA ON P4T-100M50G-100-T-RD

