

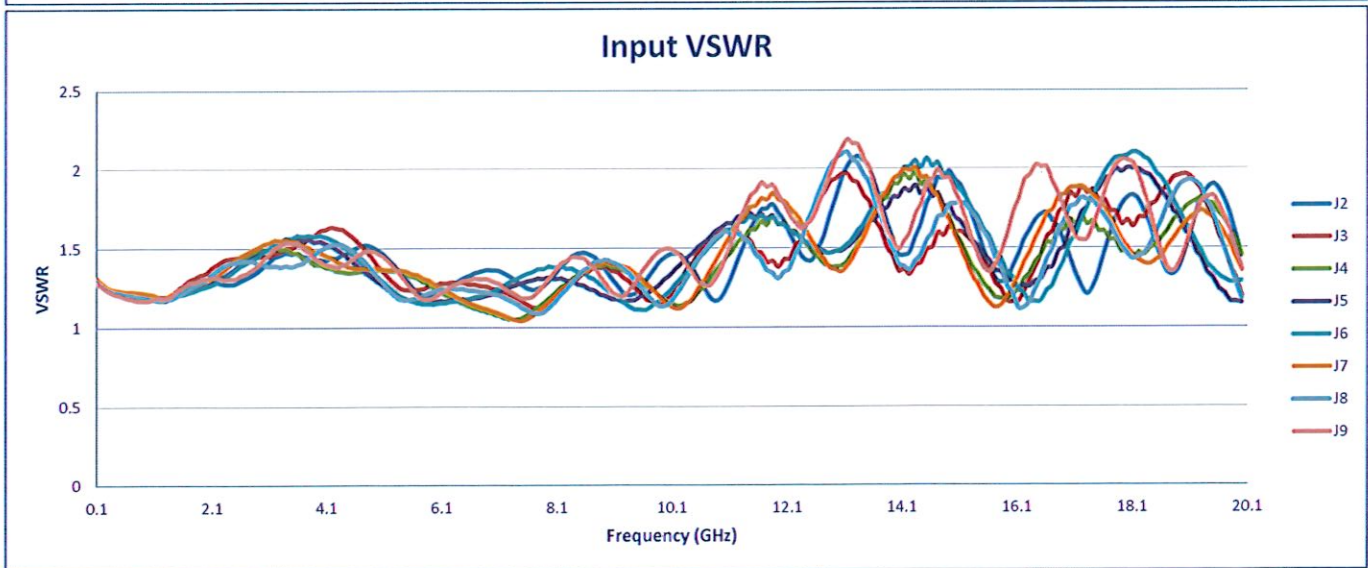
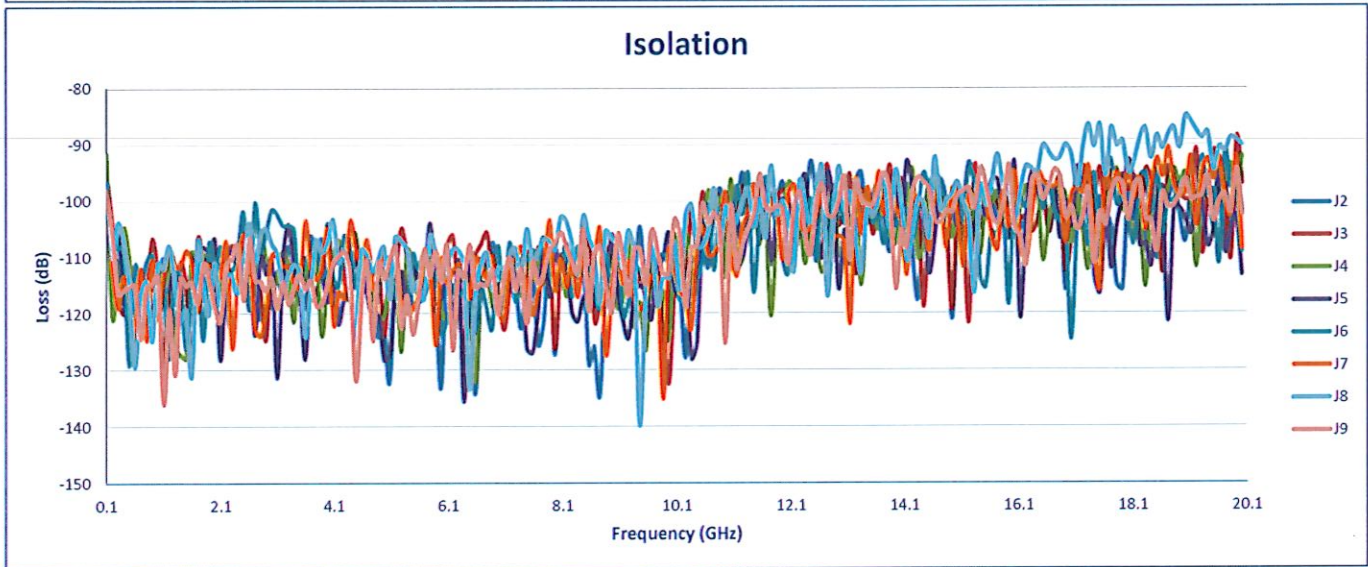
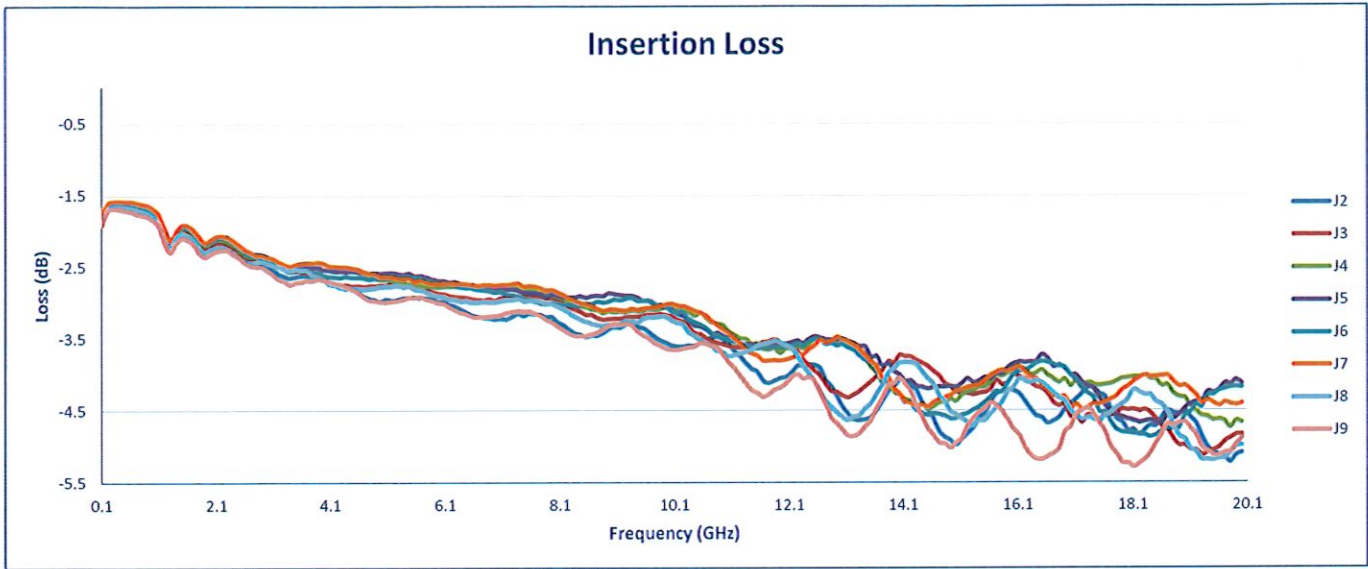
**SUMMARY TEST DATA
ON
P8T-100M40G-95-T-512-292FF-IND-OPT100M20G**

Customer: _____ Tested By: L. McGraw
 SO No: _____ Temperature: +25°C
 Model No: P8T-100M40G-95-T-512-292FF-IND-OPT100M20G Date: 1/9/2025
 Serial No: PL50877/2502 Drawing No: 27641380 Rev: A2

TEST ITEM NO.	PARAMETERS	SPECIFIED VALUE	TEST RESULTS	QA QC	
1	Frequency Range:	0.1 - 20 GHz	0.1 - 20 GHz	PMI QA2	
2	Insertion Loss:	5.5 dB Max.	5.29 dB (See Plot)		
3	Isolation:	80 dB Min.	85.07 dB (See Plot)		
4	VSWR: In/Out	2.5.0:1 Max.	2.18:1 In 2.33:1 Out (See Plot)		
5	Switching Speed:	100 ns Max.	<100 ns See Typical Characteristics		
6	Input Power:	+20 dBm CW Max.	See Typical Characteristics		
7	DC Supply:	+5 VDC @ 500 mA -12 VDC @ 200 mA	+5 VDC @ 213 mA -12 VDC @ 66 mA		
8	Control Signal:	EIGHT LINE TTL: "0" ISOLATION "1" INSERTION LOSS E1: J1-J2 E2: J1-J3 E3: J1-J4 E4: J1-J5 E5: J1-J6 E6: J1-J7 E7: J1-J8 E8: J1-J9	Pass		PMI QA2

QA/QC Approval:  PMI QA2

Date: 1/9/2025



P8T-100M40G-95-T-512-292FF-IND-OPT100M20G

