



**SUMMARY TEST DATA**  
**ON**  
**PEC-20M3G-3T-SFF-LV-ROHS**

Customer: \_\_\_\_\_

SO No: \_\_\_\_\_

Model No: PEC-20M3G-3T-SFF-LV-

Serial No: PL52460/2516

Tested By: S. O'Neill

Temperature: 25 °C

Date: 4/14/2025

Drawing No: 27643560 Rev: A1

TEST ITEM NO.	PARAMETERS	SPECIFIED VALUE	TEST RESULTS	QA QC	
1	Frequency Range:	20 MHz to 3.0 GHz	20 MHz to 3.0 GHz	<b>PMI QA4</b>	
2	Insertion Loss:	0.02 - 1.0 GHz 2.0 dB Max. 1.0 - 2.0 GHz 2.5 dB Max. 2.0 - 3.0 GHz 4.0 dB Max.	1.54 dB 1.58 dB 2.53 dB		
3	Isolation:	0.02-1.0 GHz 70dB Min. 1.0 - 2.0 GHz 60dB Min. 2.0 - 3.0 GHz 50 dB Min.	88.88 dB 83.6 dB 75.12 dB		
4	VSWR: (0.02-3.0 GHz)	2.0:1 Max.	1.86:1 See Plot		
6	Video Transients	ABOVE 20 MHz -100 dBm BELOW 20 MHz -75 dBm	PASS See Typical Characteristics		
7	Control	TTL1 "0", TTL2 "0" J1-J4 TTL1 "0", TTL2 "1" J2-J4 TTL1 "1", TTL2 "0" J3-J4 TTL1 "1", TTL2 "1" UNDEFINED	PASS		<b>PMI QA4</b>
8	Power Supply:	+5V @ 250 mA Max. -12V @ 120 mA Max.	+5V @ 140 mA -12V @ 110 mA		

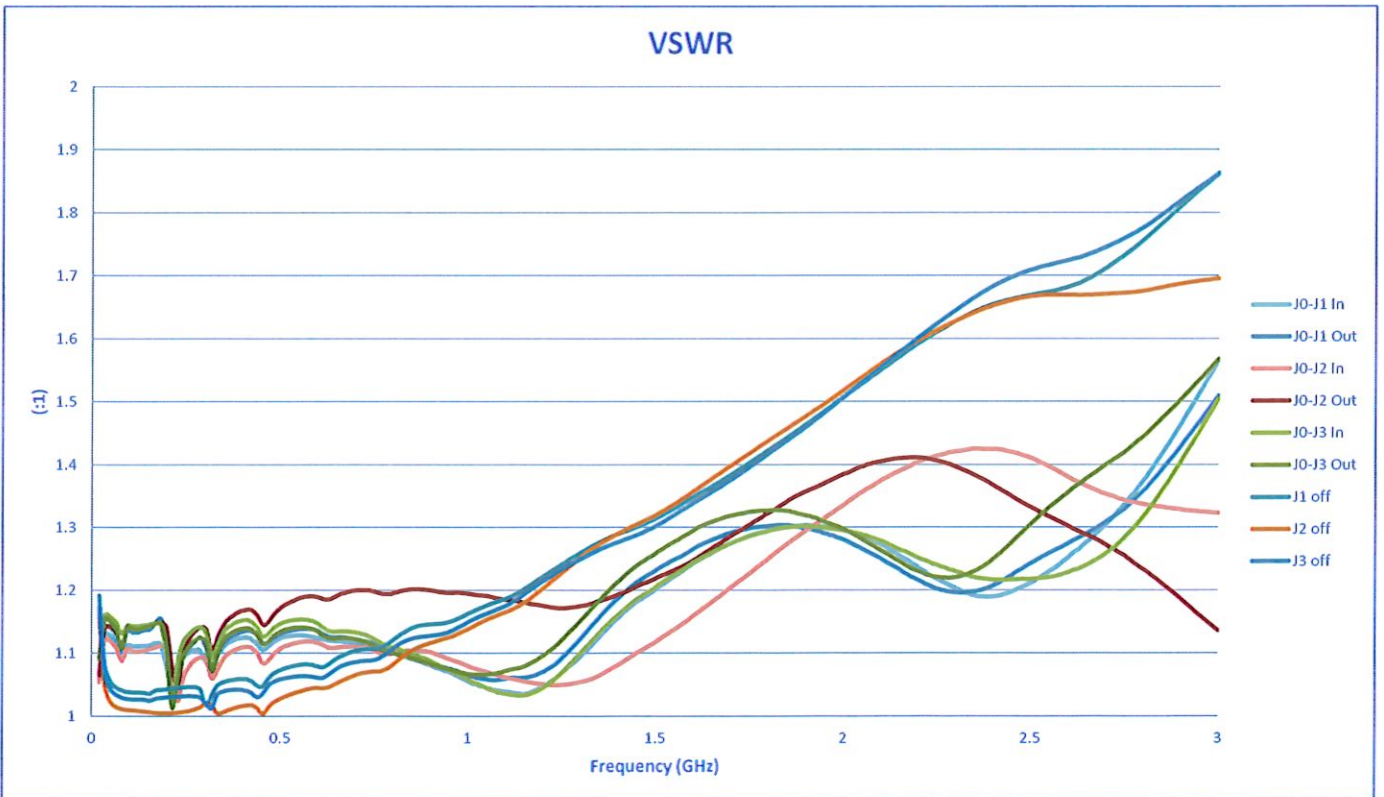
QA/QC Approval: *Cameron Kelly*

Date: 4/14/25



SUMMARY TEST DATA  
ON  
PEC-20M3G-3T-SFF-LV-ROHS

PL52460/2516





SUMMARY TEST DATA  
ON  
PEC-20M3G-3T-SFF-LV-ROHS

PLS2460/2516

