

**SUMMARY TEST DATA
ON
P4T-50M40G-55-T-292FF**

Customer: TELEPHONICS
SO No: 2025011
Model No: P4T-50M40G-55-T-292FF
Serial No: PL53187/2522

Tested By: L. McGraw
Temperature: 25°C
Date: 5/29/2025
Drawing No: 27618988 Rev: A1

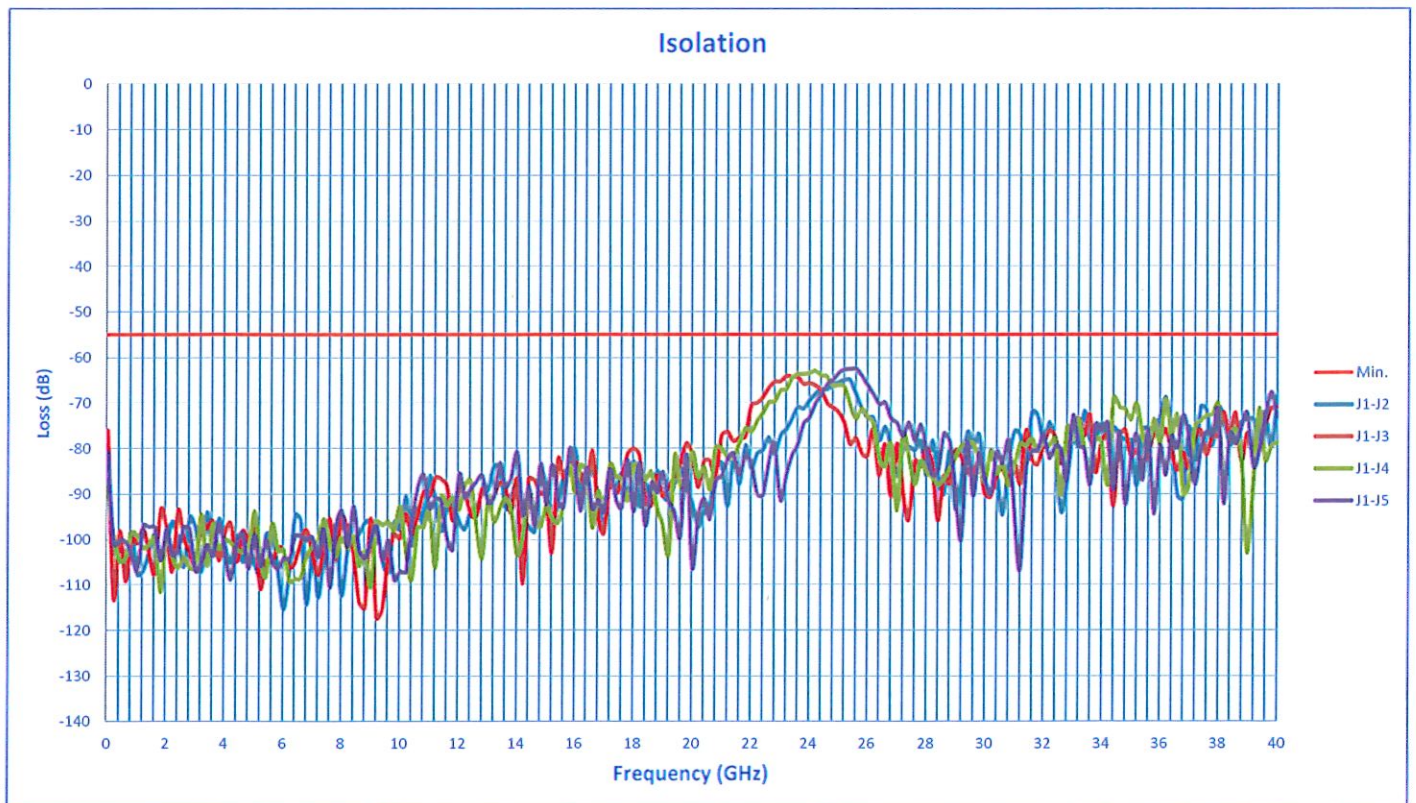
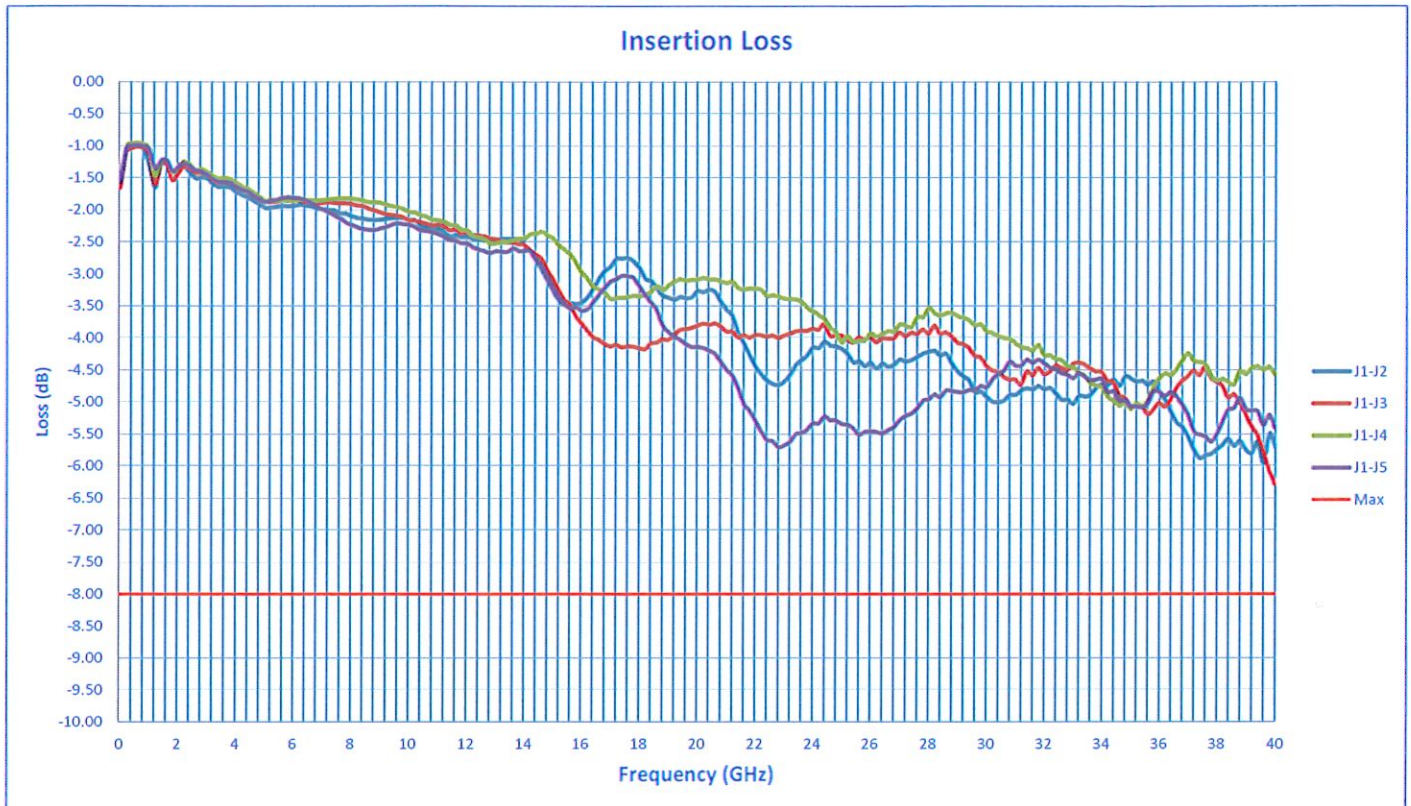
| TEST ITEM NO. | PARAMETERS | SPECIFIED VALUE | TEST RESULTS | QA |
|---------------|------------------|---|---|---------|
| | | | +25°C | QC |
| 1 | Frequency Range: | 50MHz to 40GHz | 50MHz to 40GHz | PMI QA4 |
| 2 | Insertion Loss: | 8dB Max | 6.28 dB See Graph | |
| 3 | Isolation: | 55dB Min | 62.57 dB See Graph | |
| 4 | VSWR: | 2.5:1 Max | 2.39 :1 See Graph | |
| 5 | Speed: | 50% TTL to 10%/90% RF 85ns Typ, 100ns Max | Pass See Typical Characteristics | |
| 6 | Input Power: | +20dBm CW | Pass See Typical Characteristics | |
| 7 | Survival Power: | 0.5W CW, 5W Peak, 1us | Pass See Typical Characteristics | |
| 8 | Control TTL | 4 Line Independent Logic "0" = Insertion Loss Logic "1" = Isolation | Pass | |
| 9 | Power Supply: | +12 to +15VDC @ 150mA * -12 to -15VDC @ 100mA * | +12 to +15VDC @ 115mA -12 to -15VDC @ 66mA | PMI QA4 |

*Voltage Regulation & Reverse Bias Protection Included

QA/QC Approval: *Cameron Kelly*

Date: 6/3/25

**SUMMARY TEST DATA
ON
P4T-50M40G-55-T-292FF**





SUMMARY TEST DATA ON P4T-50M40G-55-T-292FF

