

**SUMMARY TEST DATA
ON
P16T-100M20G-60-T-512-SFF**

Customer: _____
 SO No: _____
 Model No: P16T-100M20G-60-T-512-SFF
 Serial No: PL53191/2522

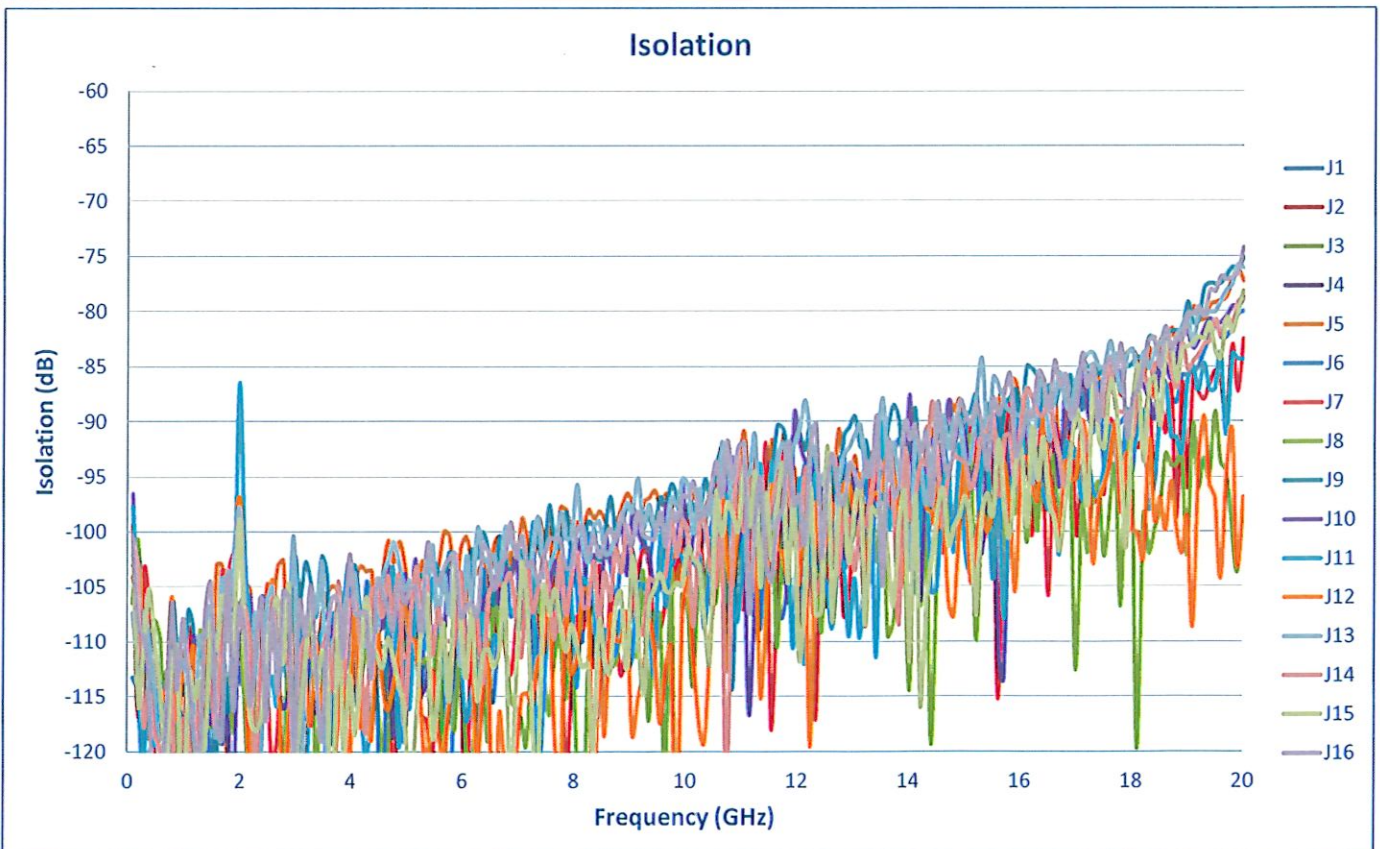
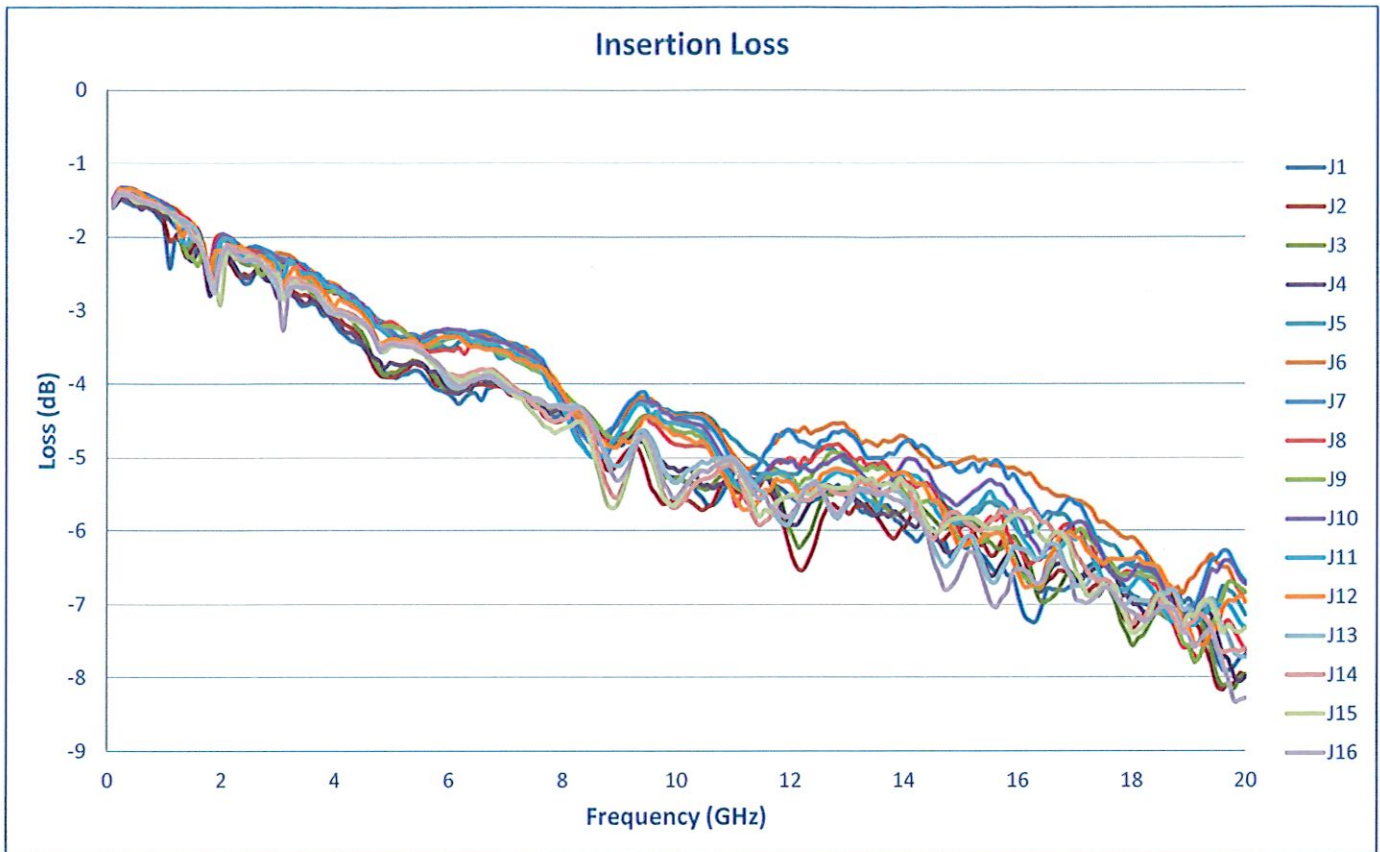
Tested By: L. McGraw
 Temperature: +25° C
 Date: 5/29/2025
 Drawing No: 27620911 Rev: A2

TEST ITEM No.	PARAMETERS	SPECIFIED VALUE	TEST RESULTS	QA QC
1	Frequency Range:	0.1 to 20 GHz	0.1 to 20 GHz	PMI QAA
2	Insertion Loss:	8.5 dB Typ.	8.32 dB See Plot	
3	Isolation:	60 dB Typ.	74 dB See Plot	
4	VSWR (Input/Output):	2.0:1 Typ., 2.5:1 Max.	2.45:1 See Plot	
5	VSWR (Output/Off):	2.0:1 Typ., 2.5:1 Max.	2.14:1 See Plot	
6	Switching Speed (Rise/Fall):	50 ns Typ.	<50 ns See Typical Characteristics	
7	Switching Speed (Delay On/Off):	150 ns Max.	<150 ns See Typical Characteristics	
8	Input Power:	+20 dBm CW	Pass See Typical Characteristics	
9	Survival Power:	1 Watt CW 10 Watts Peak, 1 µsec	Pass See Typical Characteristics	
10	Control:	TTL Logic "0" = ON "1" = OFF	Pass	
11	DC Supply:	+5 VDC @ 750 mA -12 VDC @ 200 mA	+5 V @ 204 mA -12 V @ 186 mA	

QA/QC Approval: _____

Cameron Kelly

Date: 6/3/25



**SUMMARY TEST DATA
ON
P16T-100M20G-60-T-512-SFF**

