

SUMMARY TEST DATA
ON

P5T-500M40G-60-T-55-292FF-OPT250M

Customer: _____
 SO No: _____
 Model No: P5T-500M40G-60-T-55-292FF-OPT250M
 Serial No: PL73550/2526

Tested By: S. O'Neill
 Temperature: +25°C
 Date: 6/27/2025
 Drawing No: 27650220 REV: A1

| TEST ITEM NO. | PARAMETERS | SPECIFIED VALUE | TEST RESULTS | | |
|---------------|-------------------|---|-------------------------------|------------|------------|
| | | | +25°C | QA/QC | |
| 1 | Frequency Range: | 0.25 to 40 GHz | 0.25 to 40 GHz | PMI QA2 | |
| 2 | Insertion Loss: | 6 dB Max. | 5.65 dB | | |
| 3 | VSWR Input/Output | 2.5:1 Max. | 2.2 :1 Max. | | |
| 4 | Isolation: | 70 dB Min. | 77.96 dB | | |
| 5 | Switching Speed | 100 ns Max. | See Typical Characteristics | | |
| 6 | Input Power: | +25 dBm CW MAX (250 MHz to 18 GHz) +23 dBm CW MAX (18 GHz to 40 GHz) +20 dBm CW MAX (HOT SWITCHING) | See Typical Characteristics | | |
| 7 | Control Signal: | TTL Logic (See Logic Table Below) | Pass | | |
| 8 | DC Supply: | +5 V @ 300 mA Typ. -5 V @ 100 mA Typ. | +5 V @ 164 mA -5 V @ 56 mA | | PMI QA2 |

| CTL1 | CTL2 | CTL3 | J1-J2 | J1-J3 | J1-J4 | J1-J5 | J1-J6 |
|------|------|------|-------|-------|-------|-------|-------|
| 0 | 0 | 0 | LOSS | ISO. | ISO. | ISO. | ISO. |
| 0 | 0 | 1 | ISO. | LOSS | ISO. | ISO. | ISO. |
| 0 | 1 | 0 | ISO. | ISO. | LOSS | ISO. | ISO. |
| 0 | 1 | 1 | ISO. | ISO. | ISO. | LOSS | ISO. |
| 1 | 0 | 0 | ISO. | ISO. | ISO. | ISO. | LOSS |

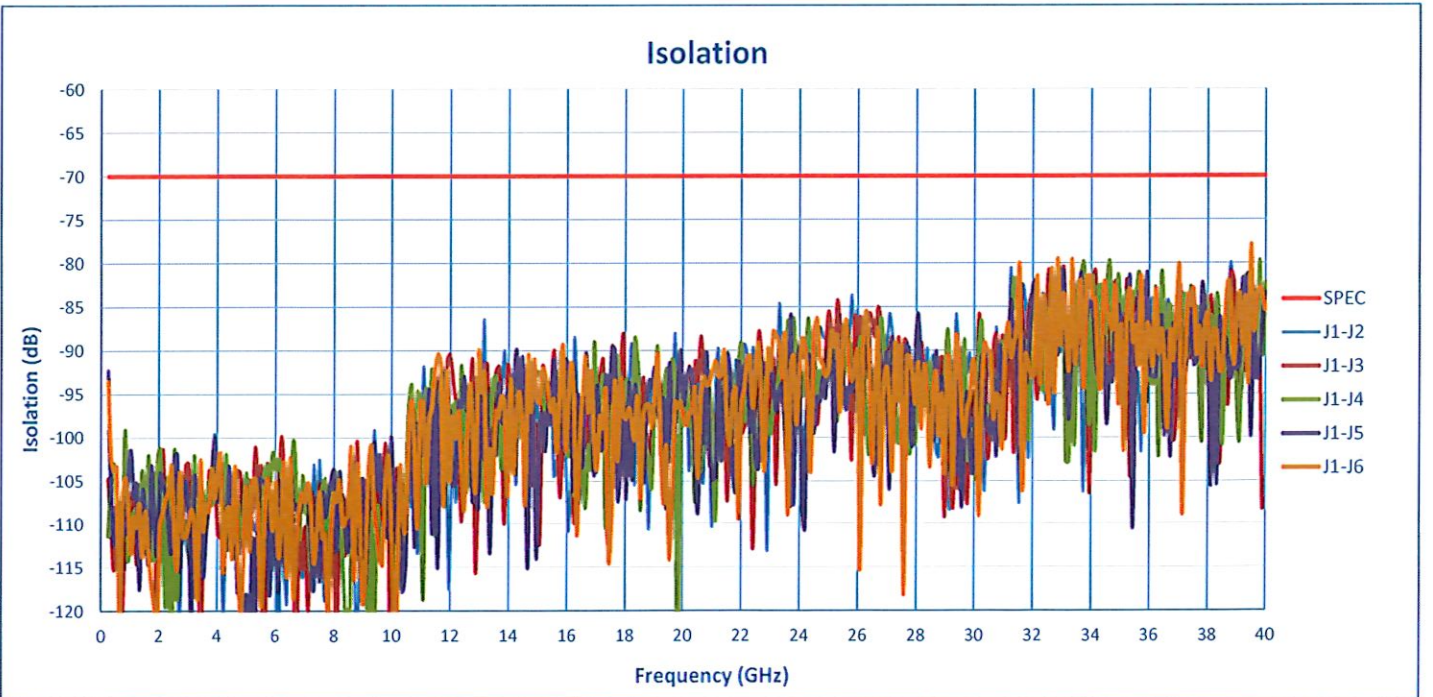
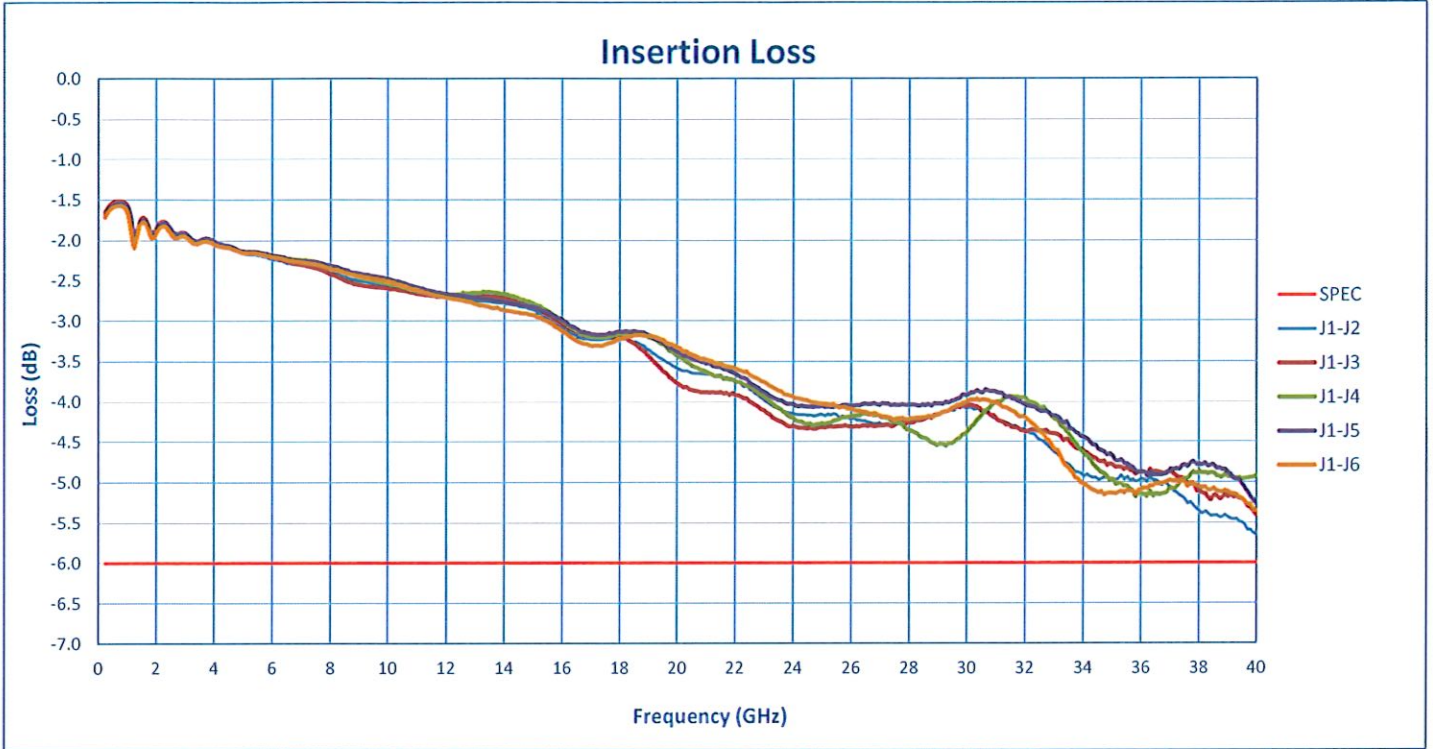
QA/QC Approval: PMI
QA2

Date: 6/30/2023



SUMMARY TEST DATA ON

P5T-500M40G-60-T-55-292FF-OPT250M



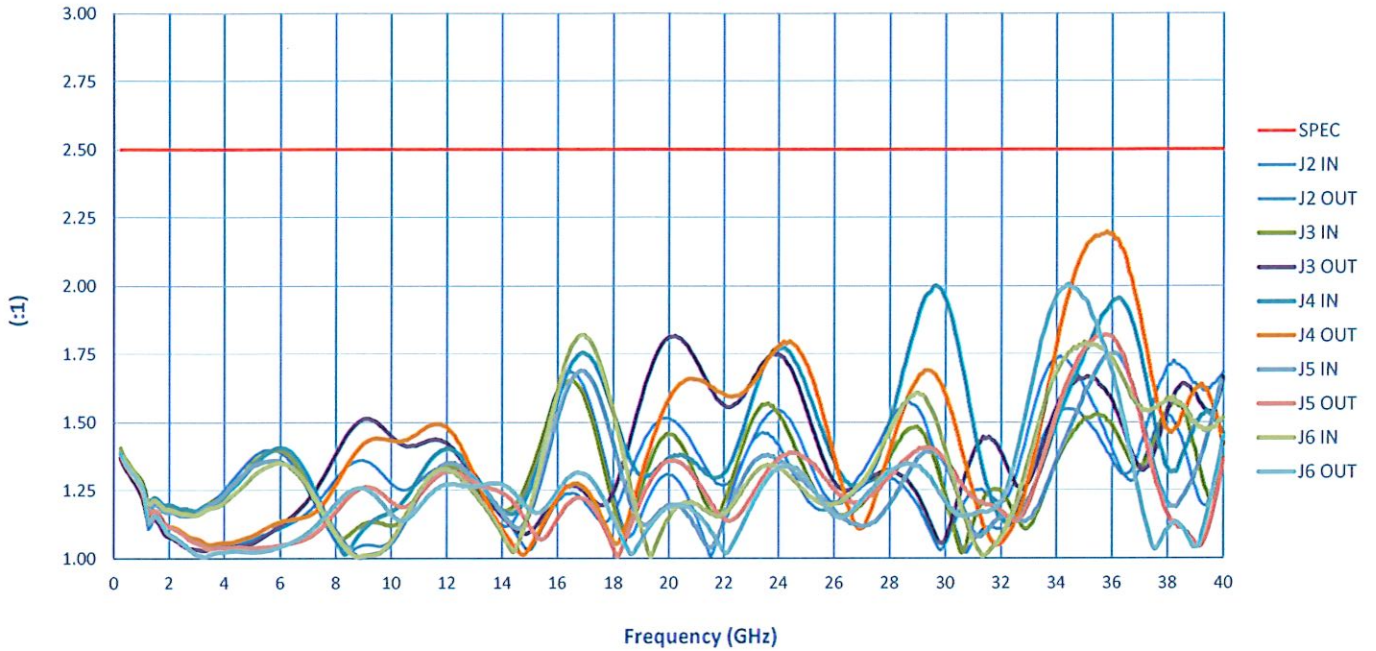
7309-A Grove Road Frederick, MD 21704 USA Phone: (301)662-5019 Fax: (301)662-1731
Email: sales@quanticpmi.com

SUMMARY TEST DATA

ON

P5T-500M40G-60-T-55-292FF-OPT250M

VSWR In/Out



VSWR Absortive Out/OFF

