

**SUMMARY TEST DATA**

**ON**

**P5T-500M40G-60-T-55-292FF-OPT250M**

Customer: PMI  
 SO No: PMI  
 Model No: P5T-500M40G-60-T-55-292FF-OPT250M  
 Serial No: PL53756/2526

Tested By: S. O'Neill  
 Temperature: +25°C  
 Date: 6/27/2025  
 Drawing No: 27650220      REV: A1

TEST ITEM NO.	PARAMETERS	SPECIFIED VALUE	TEST RESULTS		
			+25°C	QA/QC	
1	Frequency Range:	0.25 to 40 GHz	0.25 to 40 GHz	PMI QA2	
2	Insertion Loss:	6 dB Max.	5.72 dB		
3	VSWR Input/Output	2.5:1 Max.	2.08 :1 Max.		
4	Isolation:	70 dB Min.	77.41 dB		
5	Switching Speed	100 ns Max.	See Typical Characteristics		
6	Input Power:	+25 dBm CW MAX (250 MHz to 18 GHz) +23 dBm CW MAX (18 GHz to 40 GHz) +20 dBm CW MAX (HOT SWITCHING)	See Typical Characteristics		
7	Control Signal:	TTL Logic (See Logic Table Below)	Pass		
8	DC Supply:	+5 V @ 300 mA Typ. -5 V @ 100 mA Typ.	+5 V @ 164 mA -5 V @ 56 mA		PMI QA2

CTL1	CTL2	CTL3	J1-J2	J1-J3	J1-J4	J1-J5	J1-J6
0	0	0	LOSS	ISO.	ISO.	ISO.	ISO.
0	0	1	ISO.	LOSS	ISO.	ISO.	ISO.
0	1	0	ISO.	ISO.	LOSS	ISO.	ISO.
0	1	1	ISO.	ISO.	ISO.	LOSS	ISO.
1	0	0	ISO.	ISO.	ISO.	ISO.	LOSS

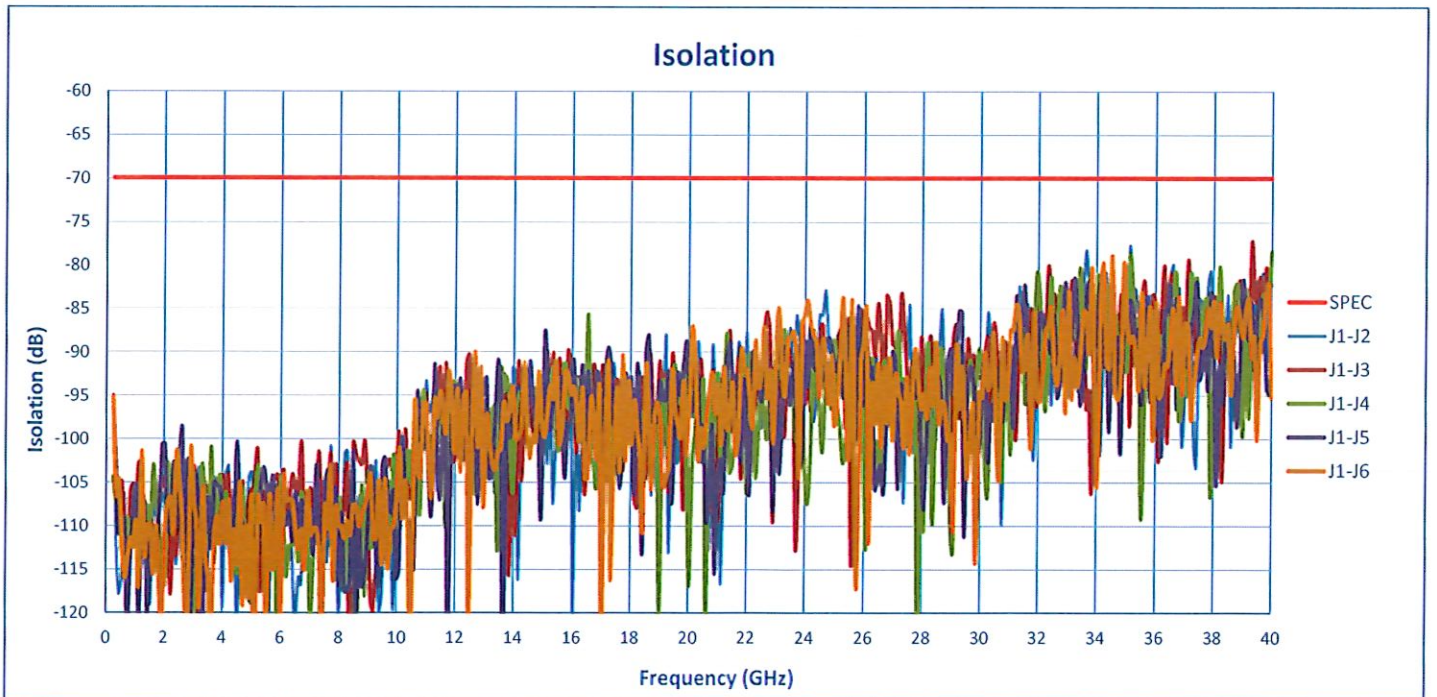
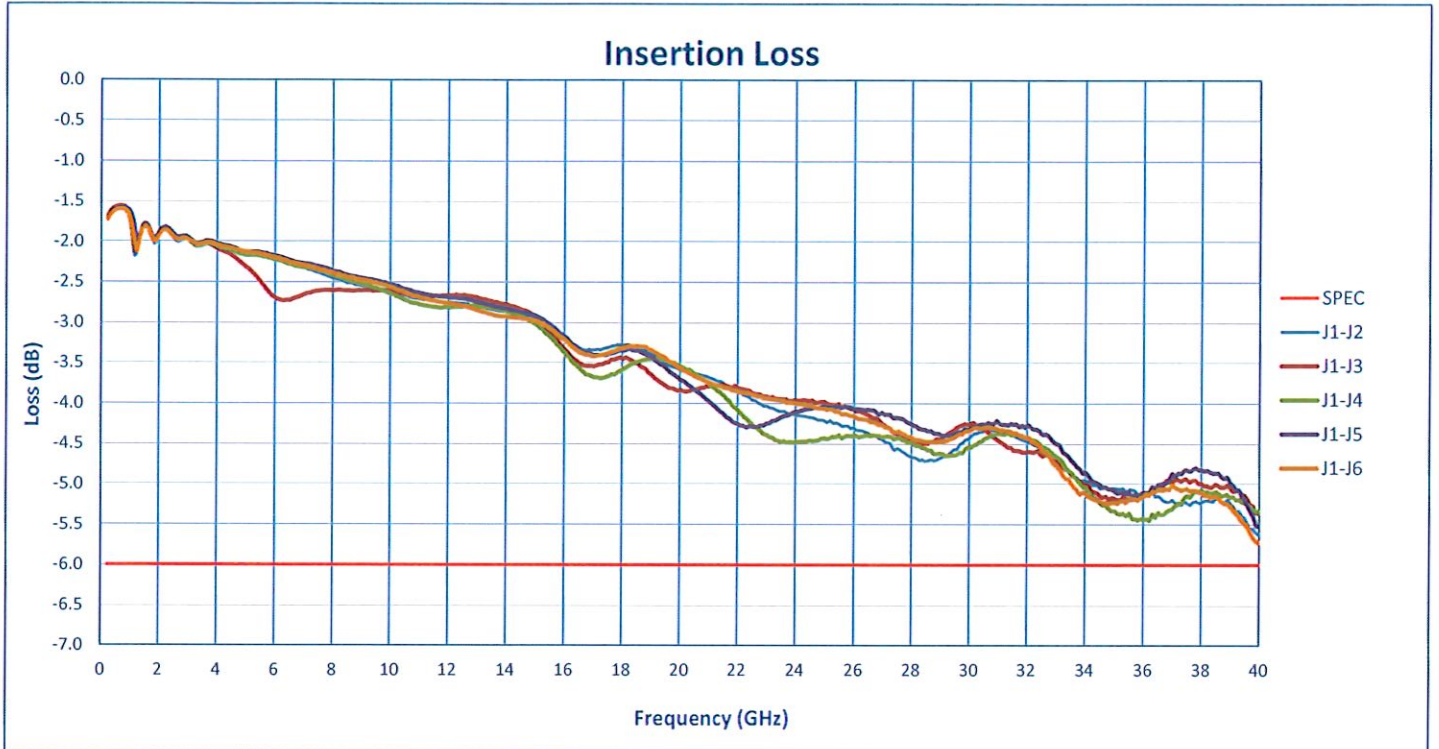
QA/QC Approval: *[Signature]* *PMI QA2*

Date: 6/30/2025



# SUMMARY TEST DATA ON

## P5T-500M40G-60-T-55-292FF-OPT250M



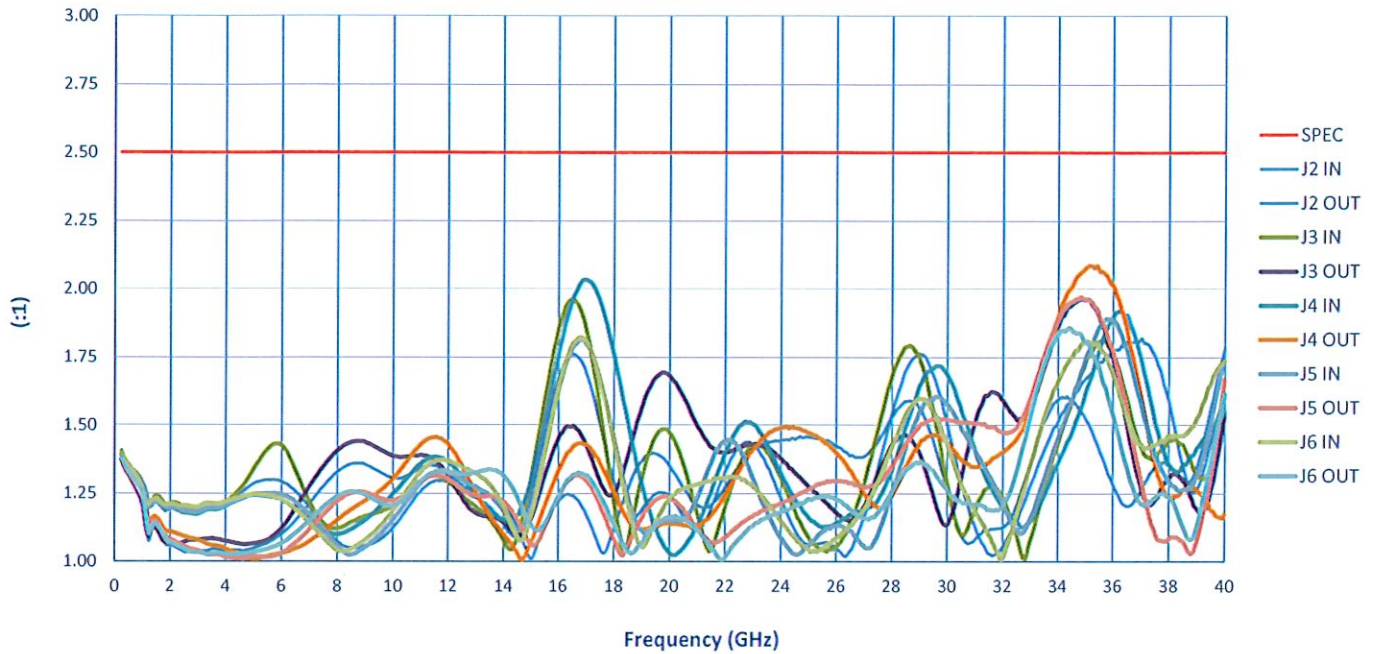
7309-A Grove Road Frederick, MD 21704 USA Phone: (301)662-5019 Fax: (301)662-1731  
Email: sales@quanticspmi.com

**SUMMARY TEST DATA**

**ON**

**P5T-500M40G-60-T-55-292FF-OPT250M**

**VSWR In/Out**



**VSWR Absorptive Out/OFF**

