

**SUMMARY TEST DATA
ON
P16T-100M50G-100-T-DEC**

Customer: _____
SO No: _____
Model No: P16T-100M50G-100-T-DEC
Serial No: PL53846/2527

Tested By: S. O'Neill
Temperature: +25° C
Date: 7/3/2025
Drawing No: 27635060 Rev: B1

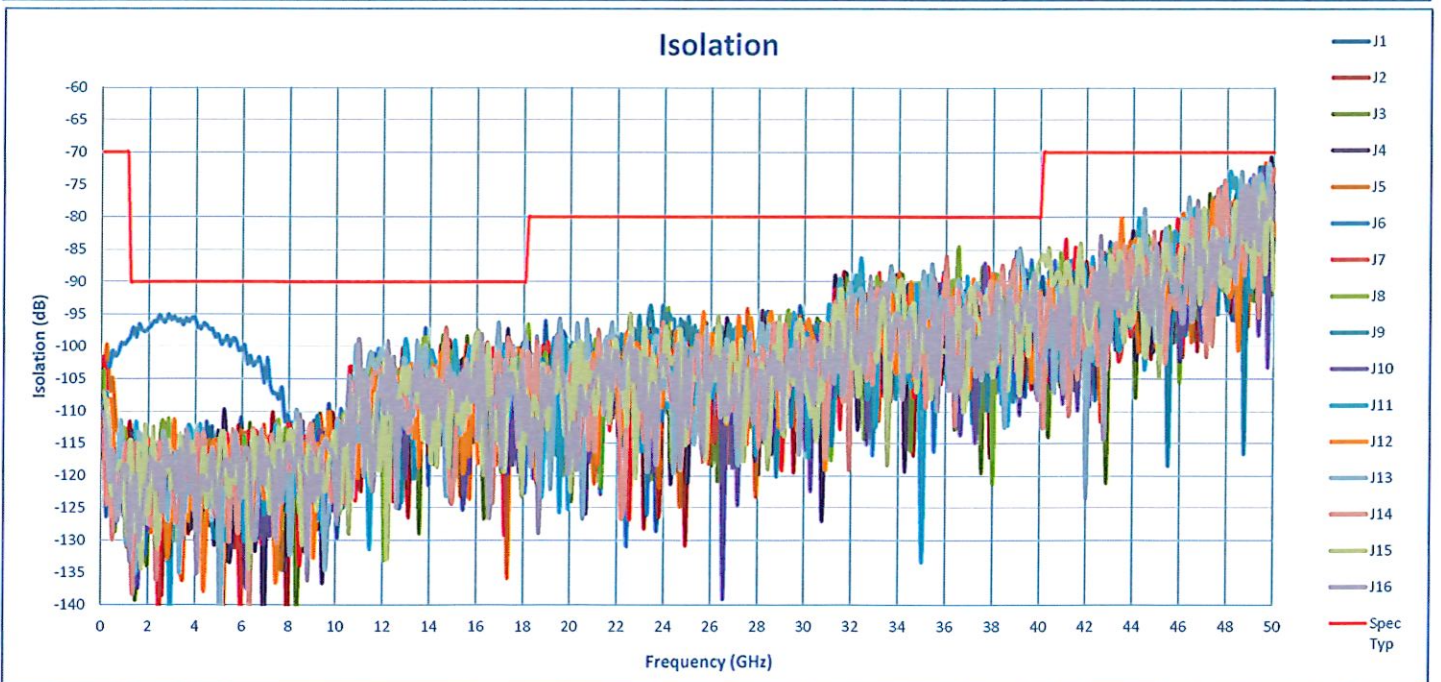
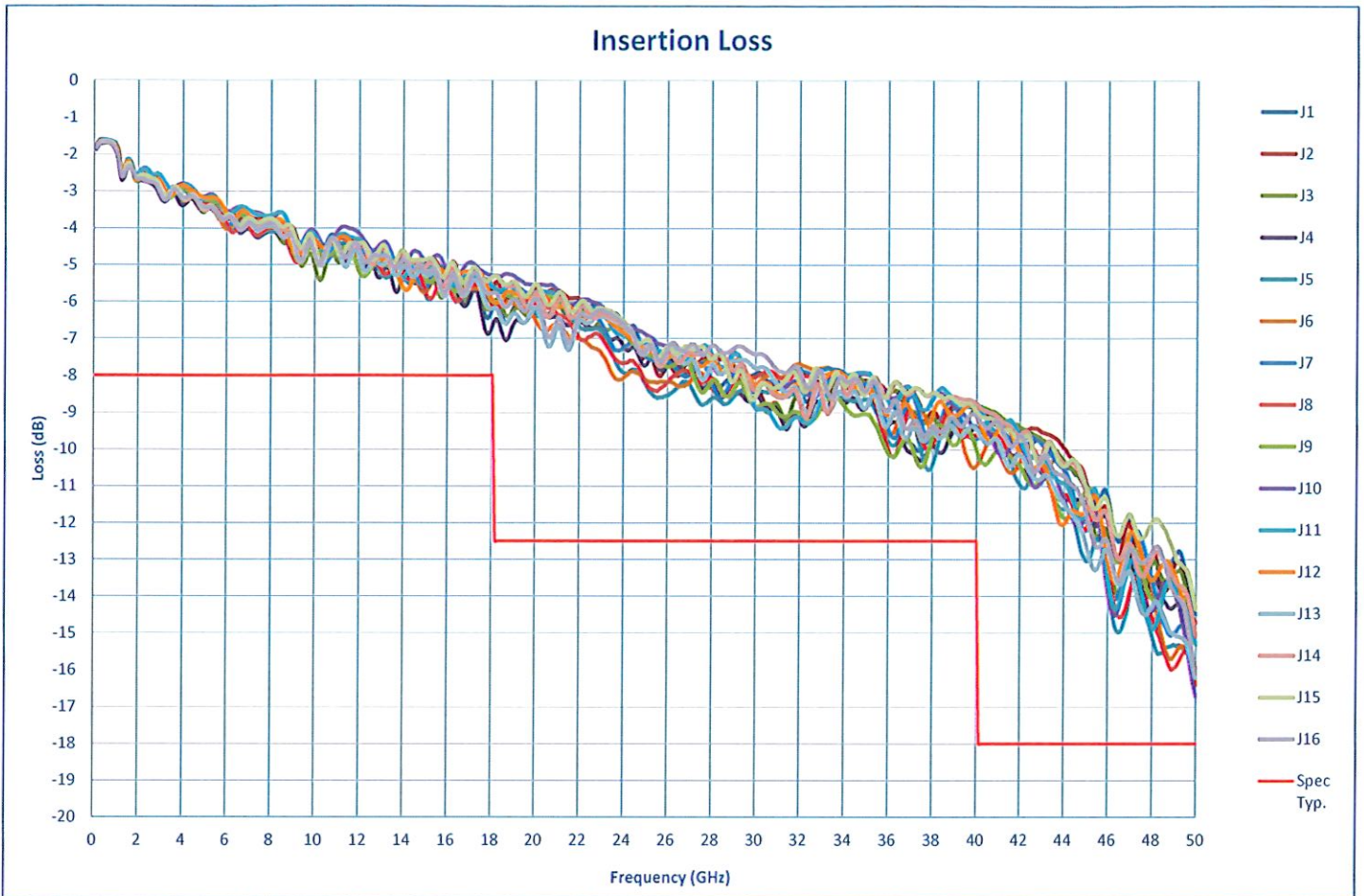
TEST ITEM No.	PARAMETERS	SPECIFIED VALUE	TEST RESULTS	QA QC			
1	Frequency Range:	0.1 GHz to 50.0 GHz	0.1 GHz to 50.0 GHz	PMI QA			
2	Insertion Loss:	8.0 dB @ 0.1 - 18 GHz Typ. 12.5 dB @ 18 - 40 GHz Typ. 18.0 dB @ 40 - 50 GHz Typ.	6.9 dB @ 0.1 - 18 GHz 10.6 dB @ 18 - 40 GHz 16.7 dB @ 40 - 50 GHz See Plot				
3	Isolation:	70 dB @ 0.1 - 1 GHz Typ. 90 dB @ 1 - 18 GHz Typ. 80 dB @ 18 - 40 GHz Typ. 70 dB @ 40 - 50 GHz Typ.	99.1 dB @ 0.1 - 1 GHz 95.1 dB @ 1 - 18 GHz 84.7 dB @ 18 - 40 GHz 70.8 dB @ 40 - 50 GHz See Plot				
4	VSWR ON (In/Out):	2.5:1 @ 0.1 - 18 GHz Typ. 3.0:1 @ 18 - 40 GHz Typ. 3.5:1 @ 40 - 50 GHz Typ.	2.3:1 @ 0.1 - 18 GHz 2.4:1 @ 18 - 40 GHz 2.5:1 @ 40 - 50 GHz See Plot				
5	VSWR Off (Out):	2.5:1 @ 0.1 - 18 GHz Typ. 3.0:1 @ 18 - 40 GHz Typ. 3.5:1 @ 40 - 50 GHz Typ.	1.8:1 @ 0.1 - 18 GHz 1.8:1 @ 18 - 40 GHz 1.9:1 @ 40 - 50 GHz See Plot				
6	Input Power:	20 dBm CW Max.	Pass See Typical Characteristics				
7	Switching Speed:	100 ns Max.	Pass See Typical Characteristics				
8	Power Supply:	+5 V @ 1100 mA Max. -12 V @ 720 mA Max.	+5 V @ 1032 mA -12 V @ 340 mA				
9	Control Logic:	Logic Table				PMI QA	
		C1	C2	C3	C4		Connector
		0	0	0	0		J1 On
		0	0	0	1		J2 On
		0	0	1	0		J3 On
		0	0	1	1		J4 On
		0	1	0	0		J5 On
		0	1	0	1		J6 On
		0	1	1	0		J7 On
		0	1	1	1		J8 On
		1	0	0	0		J9 On
		1	0	0	1		J10 On
		1	0	1	0		J11 On
		1	0	1	1		J12 On
		1	1	0	0		J13 On
		1	1	0	1		J14 On
1	1	1	0	J15 On			
1	1	1	1	J16 On			

QA/QC Approval:

Comarong Keluz

Date: 7/10/25

**SUMMARY TEST DATA
ON
P16T-100M50G-100-T-DEC**



**SUMMARY TEST DATA
ON
P16T-100M50G-100-T-DEC**

