

Customer: \_\_\_\_\_  
 SO No: \_\_\_\_\_  
 Model No: P4T-100M50G-100-R-RD-292-OPT40  
 Serial No: PL56237/2545

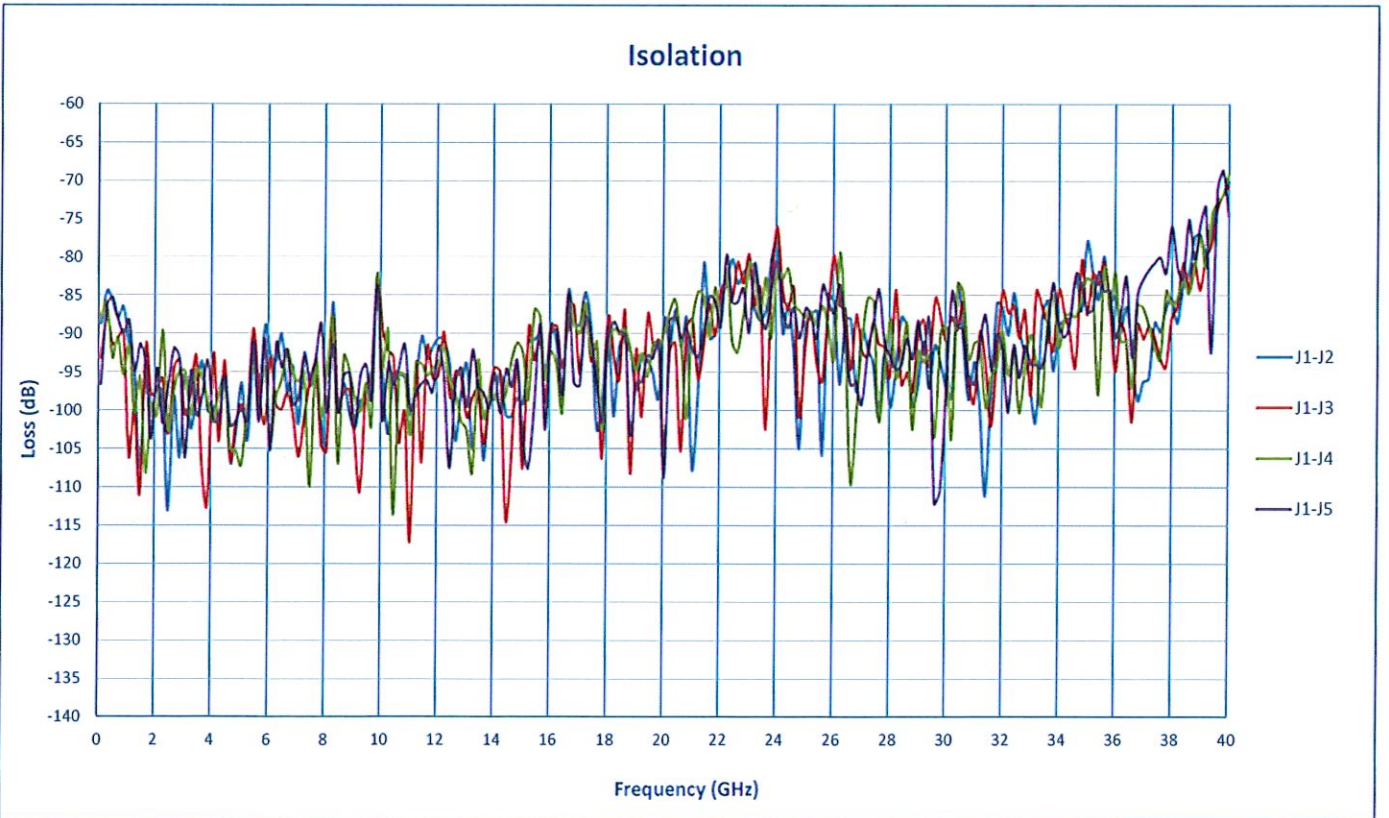
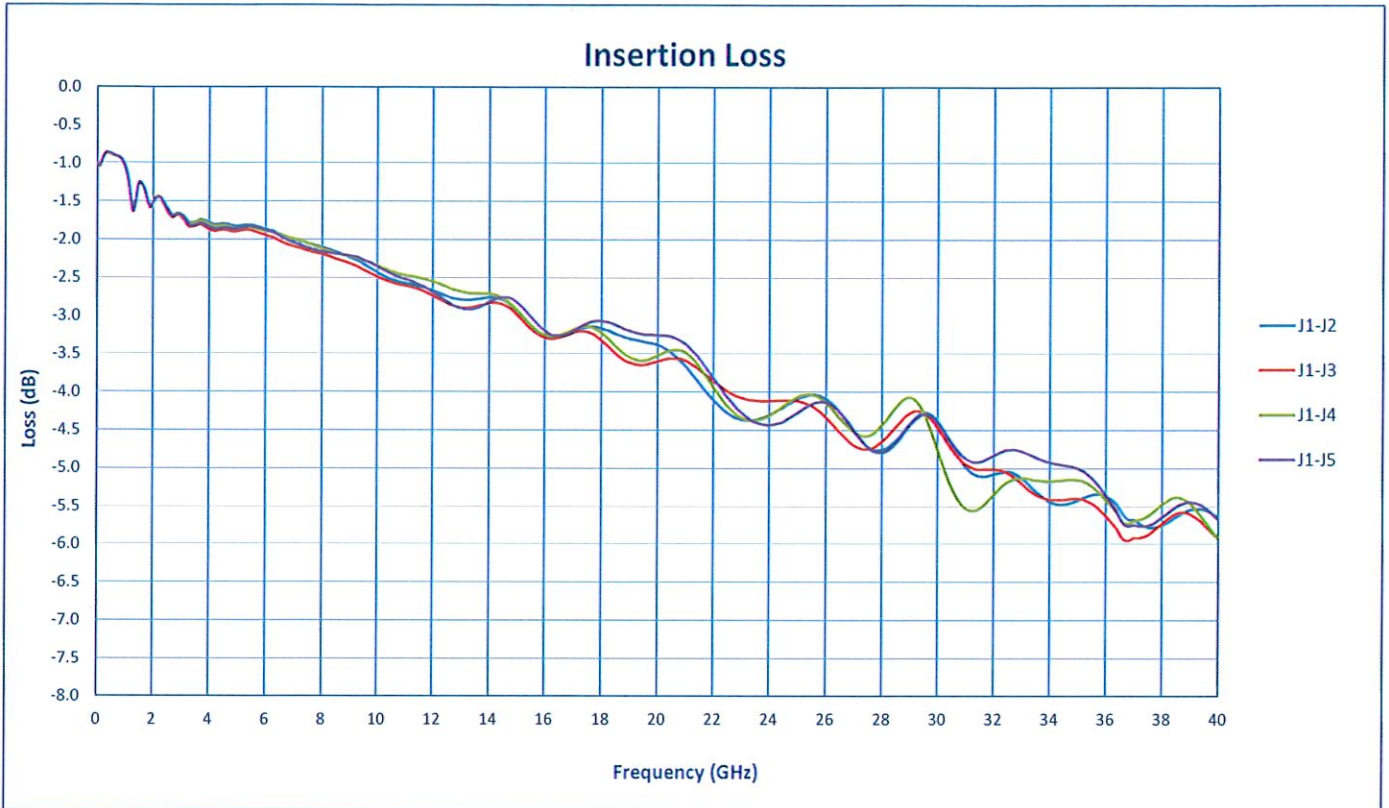
Tested By: A. Mousavi  
 Temperature: +25°C  
 Date: 11/8/2025  
 Drawing No: 27632661      REV: A1

TEST ITEM NO.	PARAMETERS	SPECIFIED VALUE	TEST RESULTS	QA
			+25°C	QC
1	Frequency Range:	0.1 to 40 GHz	0.1 to 40 GHz	PMI QA5
2	Insertion Loss:	3.5 dB (0.1 to 18GHz) MAX	2.92 dB	
		6.0 dB (18 to 40GHz) MAX	5.95 dB	
			See Graphs	
3	VSWR Input/Output	2.0:1 (0.1 to 18GHz) MAX	1.73 :1	
		2.25:1 (18 to 40GHz) MAX	2.2 :1	
			See Graphs	
4	Isolation:	70 dB (0.1 to 1GHz) TYP	84.45 dB	
		100 dB (1 to 18GHz) TYP	82.15 dB	
		100 dB (18 to 40GHz) TYP	68.69 dB	
			See Graphs	
5	Switching Speed	50 ns Max.	Pass See Typical Characteristics	
6	Input Power:	+20 dBm CW Max.	Pass See Typical Characteristics	
7	Control Signal:	See TTL Logic Table	Pass	
8	DC Supply:	+5 VDC @ 200 mA Max. -5 VDC @ 200 mA Max.	+5 VDC @ 140 mA -5 VDC @ 70 mA	PMI QA5

QA/QC Approval: Jordan Syed

Date: 11/13/25

# SUMMARY TEST DATA ON P4T-100M50G-100-R-RD-292-OPT40



# SUMMARY TEST DATA ON P4T-100M50G-100-R-RD-292-OPT40

