

SUMMARY TEST DATA
ON
P4T-100M50G-100-R-RD-292-OPT40

Customer: _____
SO No: _____
Model No: P4T-100M50G-100-R-RD-292-OPT40
Serial No: PL56907/2551

Tested By: L. McGraw
Temperature: +25°C
Date: 12/9/2025
Drawing No: 27632641 REV: B1

TEST ITEM NO.	PARAMETERS	SPECIFIED VALUE	TEST RESULTS	QA
			+25°C	QC
1	Frequency Range:	0.1 to 40 GHz	0.1 to 40 GHz	PMI QA4
2	Insertion Loss:	3.5 dB (0.1 to 18GHz) MAX	2.7 dB	
		6.0 dB (18 to 40GHz) MAX	5.98 dB	
			See Graphs	
3	VSWR Input/Output	2.0:1 (0.1 to 18GHz) MAX	1.95 :1	
		2.25:1 (18 to 40GHz) MAX	2.2 :1	
			See Graphs	
4	Isolation:	70 dB (0.1 to 1GHz) TYP	81.84 dB	
		100 dB (1 to 18GHz) TYP	92.88 dB	
		100 dB (18 to 40GHz) TYP	86.12 dB	
			See Graphs	
5	Switching Speed	50 ns Max.	Pass See Typical Characteristics	
6	Input Power:	+20 dBm CW Max.	Pass See Typical Characteristics	
7	Control Signal:	See TTL Logic Table	Pass	
8	DC Supply:	+5 VDC @ 200 mA Max. -5 VDC @ 200 mA Max.	+5 VDC @ 140 mA -5 VDC @ 70 mA	PMI QA4

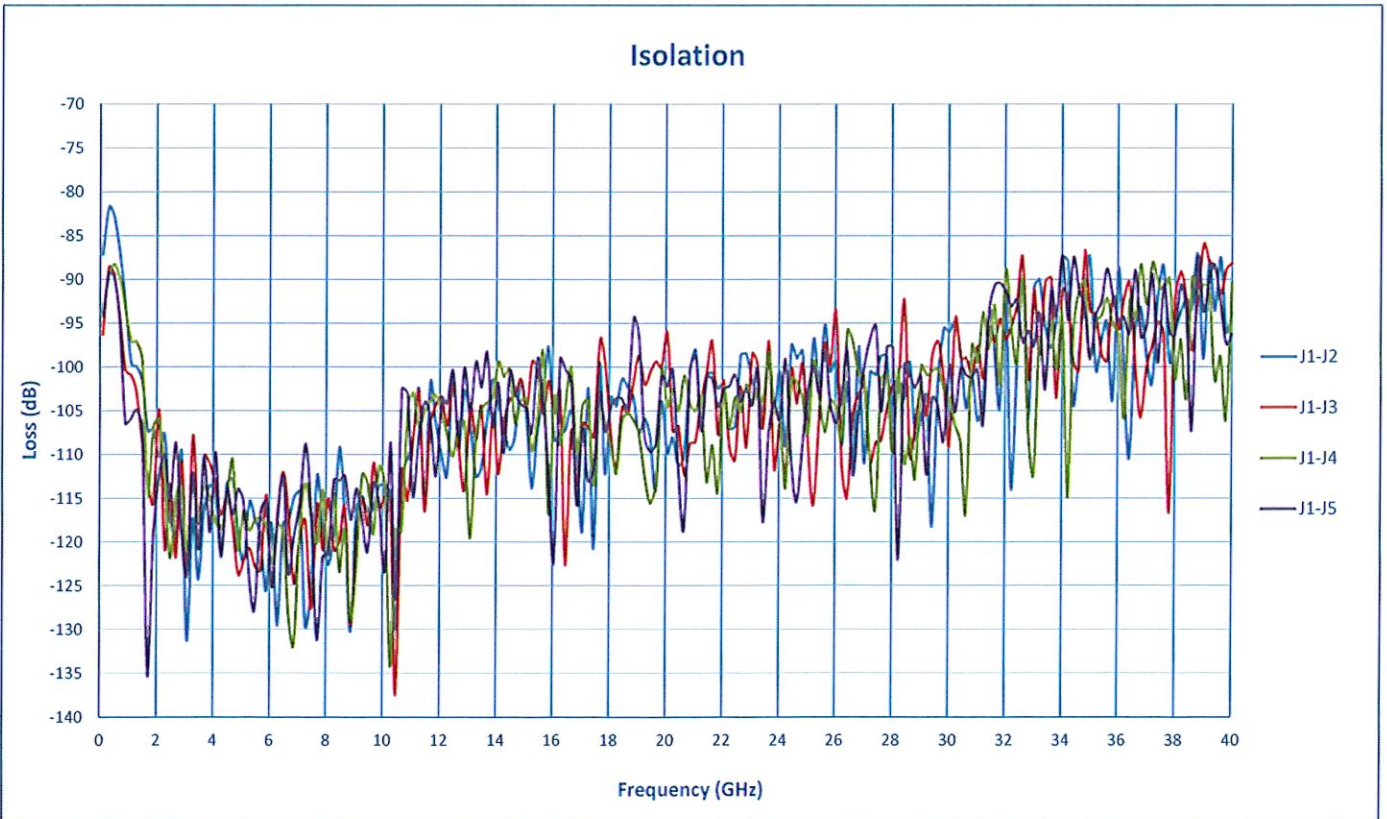
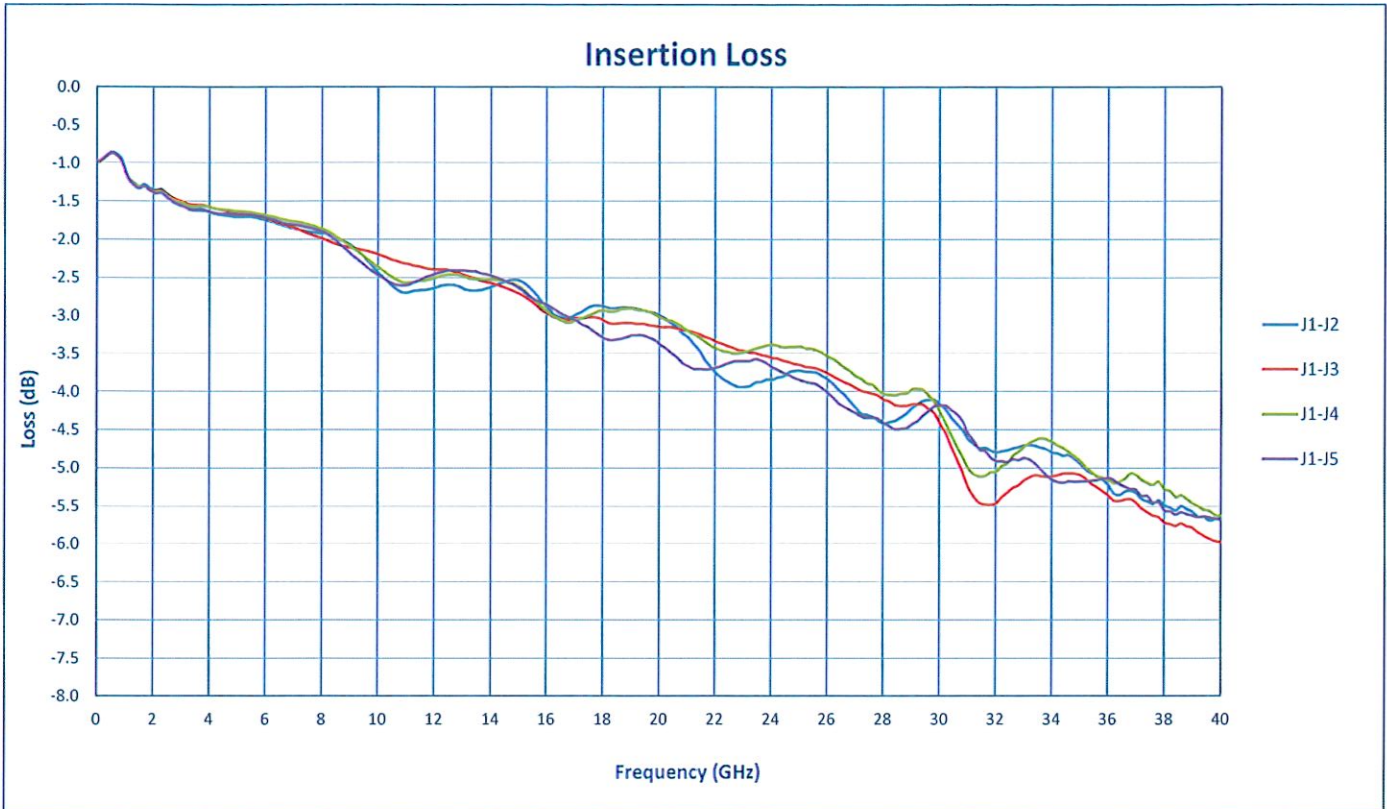
QAI/QC Approval:



Date:

12/10/2025

SUMMARY TEST DATA ON P4T-100M50G-100-R-RD-292-OPT40



SUMMARY TEST DATA ON P4T-100M50G-100-R-RD-292-OPT40

