



**SUMMARY TEST DATA
ON
P8T-500M40G-60-T-55-292FF**

Customer: _____
 SO No: _____
 Model No: P8T-500M40G-60-T-55-292FF
 Serial No: PL57425/2603

Tested By: W. Gonzalez
 Temperature: +25°C
 Date: 1/15/2025
 Drawing No: 27619563 Rev: A1

TEST ITEM NO.	PARAMETERS	SPECIFIED VALUE	TEST RESULTS	QA QC		
1	Frequency Range:	0.5 to 40 GHz	0.5 to 40 GHz	PMI QA2		
2	Insertion Loss:	10 dB Max.	8.13 dB (See Plot)			
3	Isolation:	60 dB Min.	68.7 dB (See Plot)			
4	VSWR: In/Out	2.5:1 Typ.	2.5:1 In 2.6:1 Out (See Plot)			
5	Operating Input Power:	+20 dBm CW	Pass See Typical Characteristics			
6	Switching Speed:	50 ns Typ.	<50 ns See Typical Characteristics			
7	DC Supply:	+5 VDC @ 70 mA -5 VDC @ 20 mA	61 mA @ +5 VDC 20 mA @ -5 VDC			
8	Control Signal:	Logic Table		Pass		
		3 BIT Decoder				
		E1	E2		E3	Function
		0	0		0	J1-J2 "Low Loss"
		0	0		1	J1-J3 "Low Loss"
		0	1		0	J1-J4 "Low Loss"
		0	1		1	J1-J5 "Low Loss"
		1	0		0	J1-J6 "Low Loss"
		1	0		1	J1-J7 "Low Loss"
1	1	0	J1-J8 "Low Loss"			
1	1	1	J1-J9 "Low Loss"			
				PMI QA2		

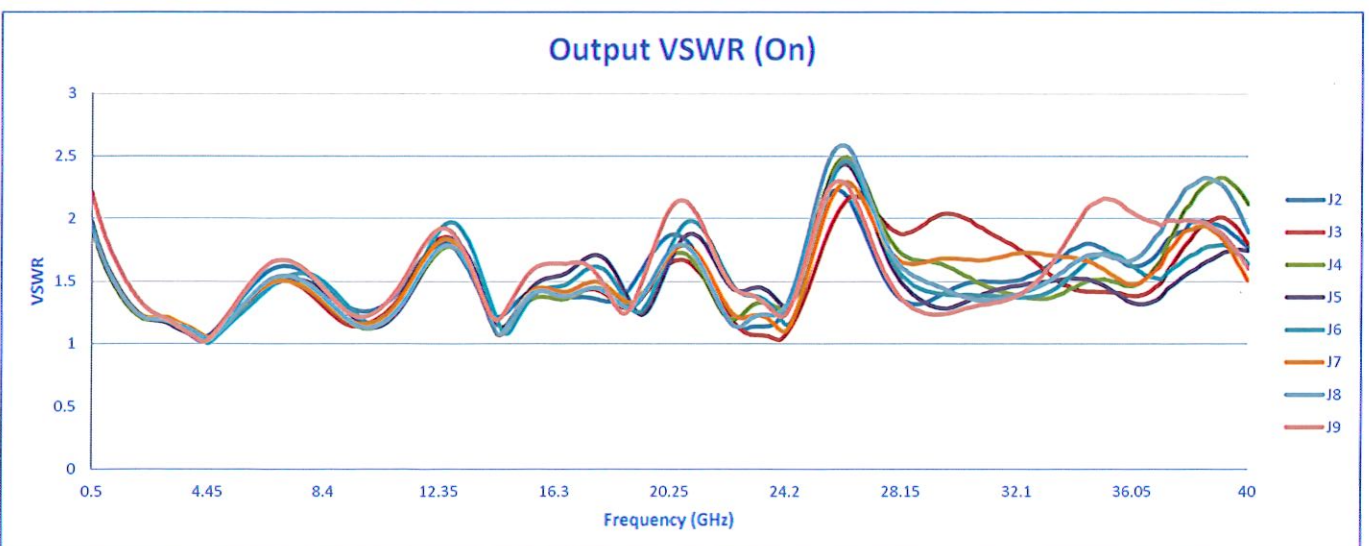
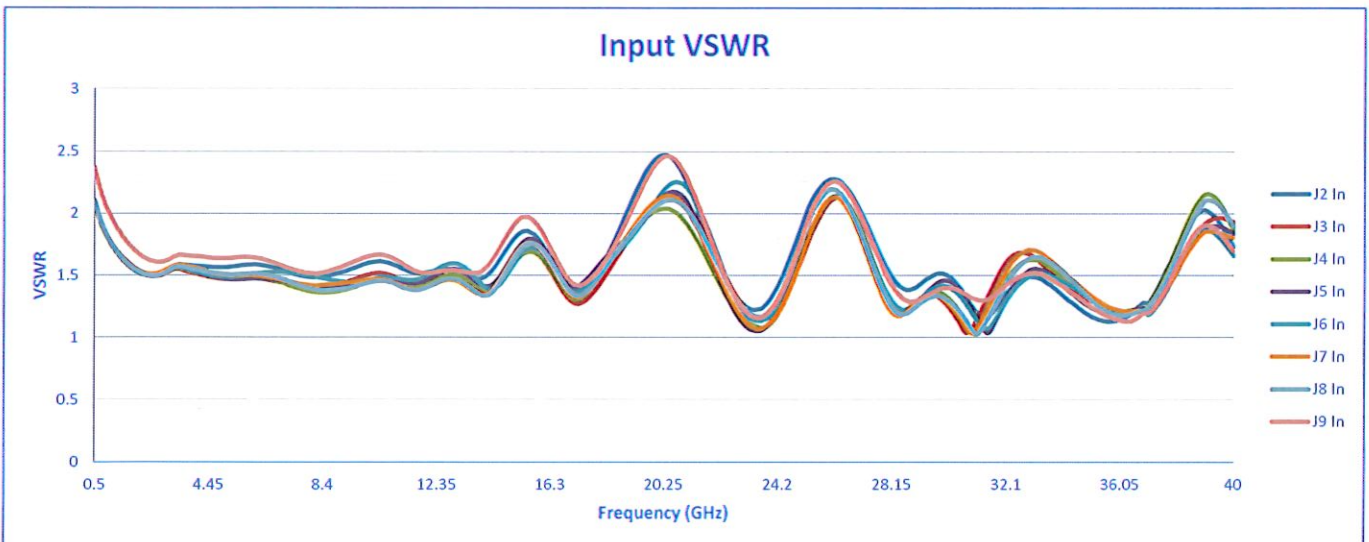
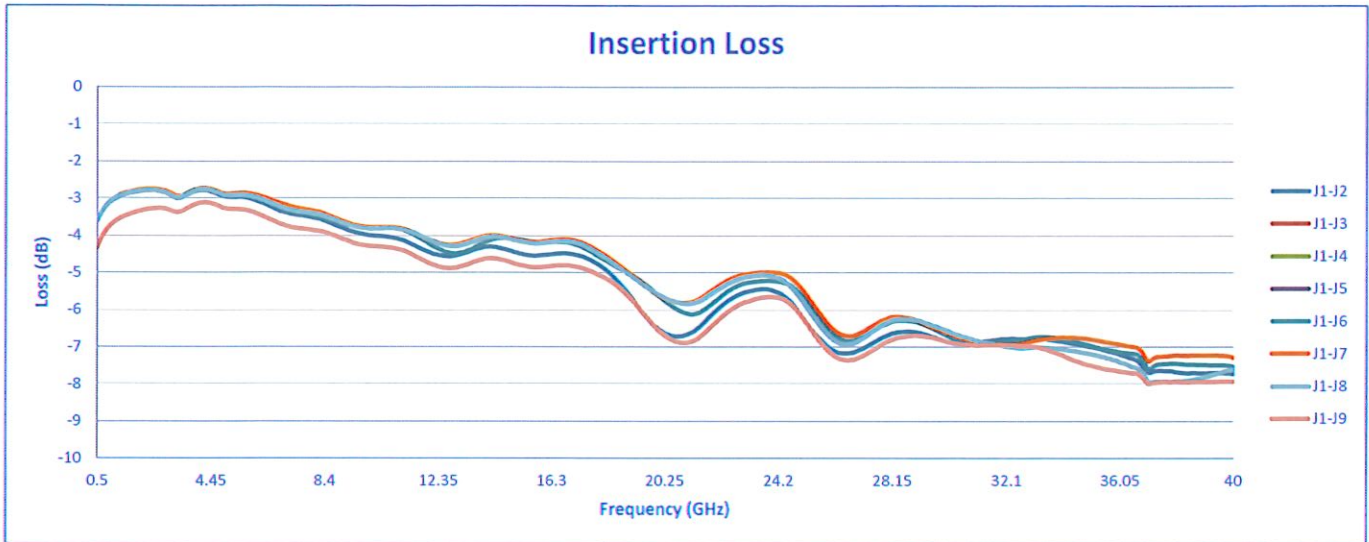
QA/QC Approval:  PMI QA2

Date: 1/16/2026



SUMMARY TEST DATA ON P8T-500M40G-60-T-55-292FF

PL57425/2603





SUMMARY TEST DATA ON P8T-500M40G-60-T-55-292FF

PL57425/2603

