



SUMMARY TEST DATA ON P4T-0R1G20G-100-T-SFF

Customer: _____
 SO No: _____
 Model No: P4T-0R1G20G-100-T-SFF
 Serial No: PL60336/2621

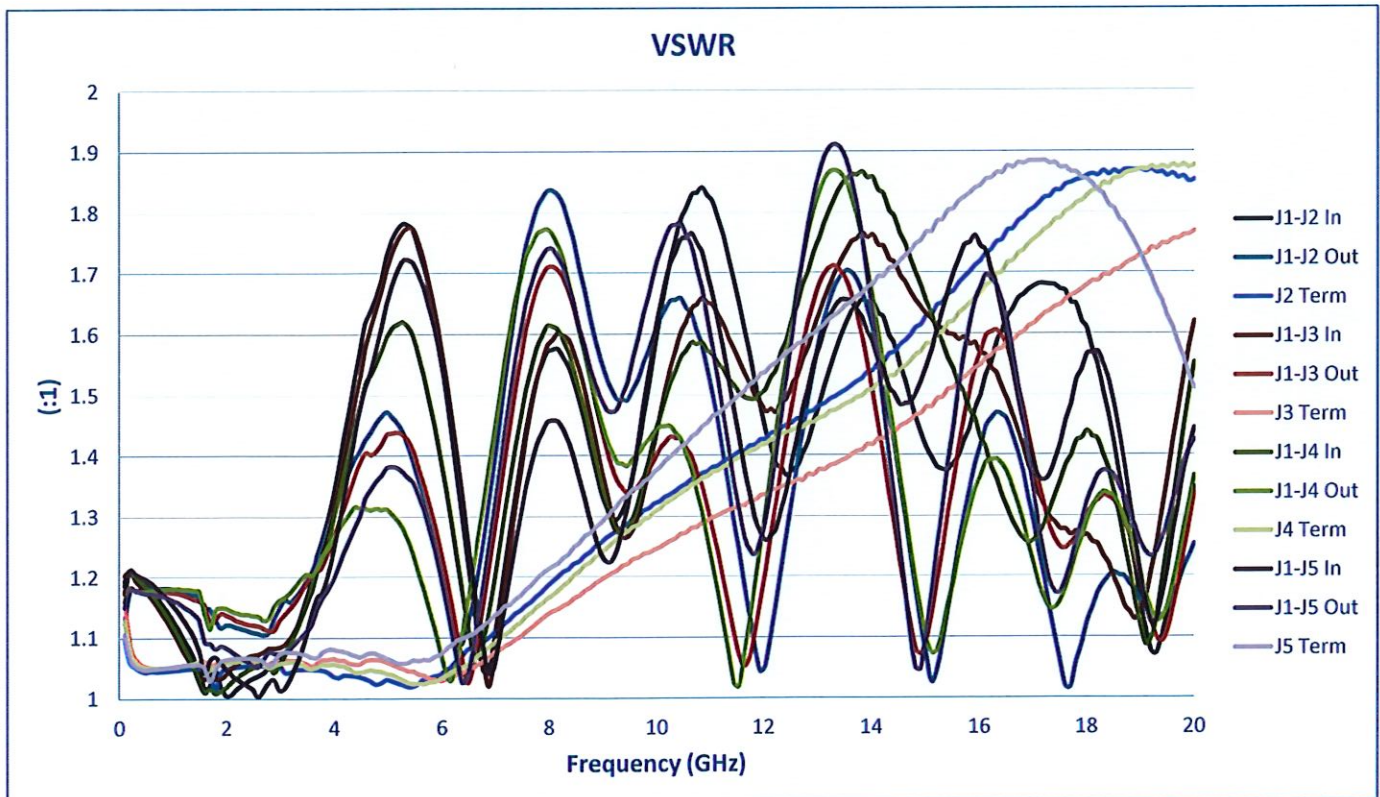
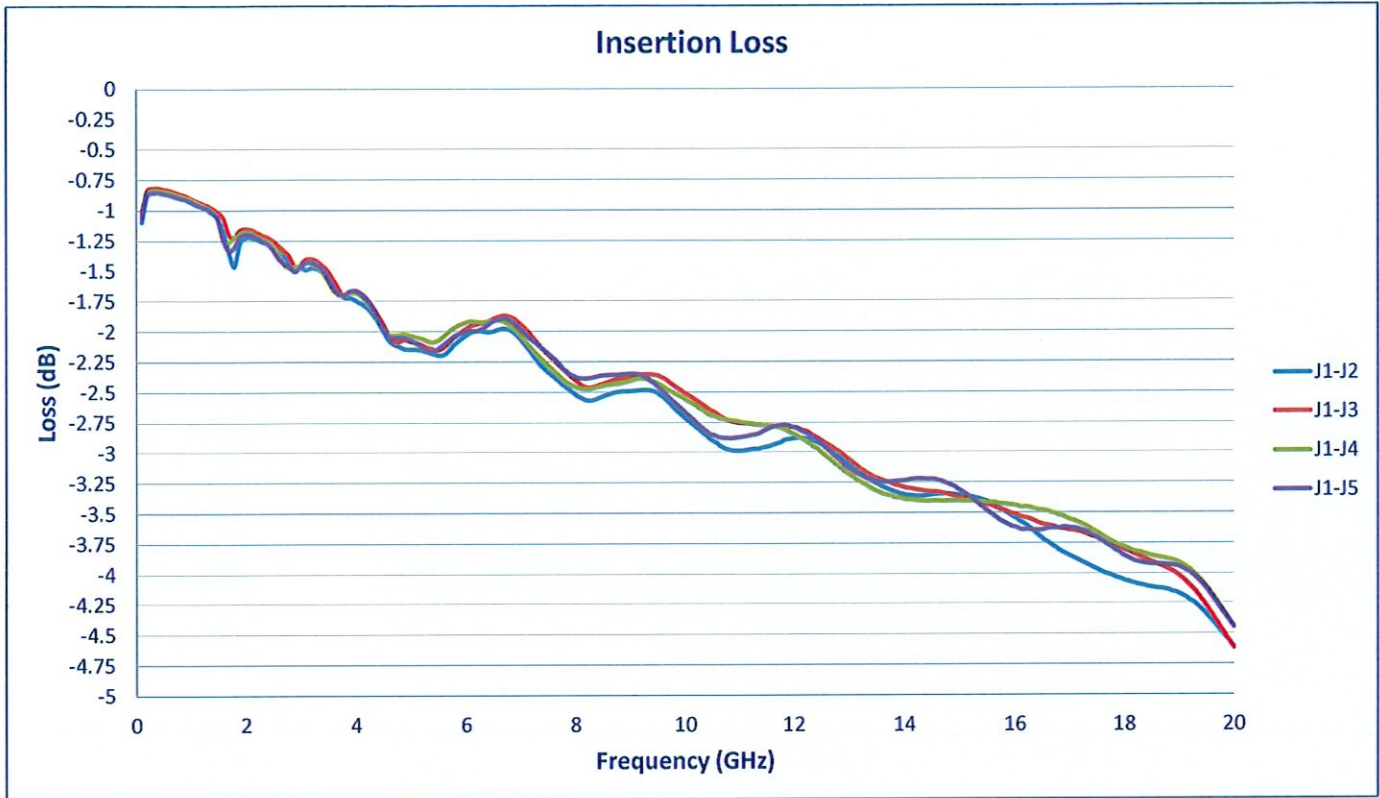
Tested By: K. Wagaman
 Temperature: 25 Degrees C
 Date: 5/22/2026
 Drawing No: 27615308 Rev: A2

TEST ITEM NO.	PARAMETERS	SPECIFIED VALUE	TEST RESULTS	QA QC
1	Frequency Range:	0.1 GHz to 20 GHz	0.1 GHz to 20 GHz	PMI QA6
2	Insertion Loss:	5.0dB Max	4.6 dB (See Plot)	
3	Isolation	110dB Min	110.1 dB (See Plot)	
4	VSWR: (ON/OFF)	2.0:1 Max.	1.9:1 (See Plot)	
5	Switching Speed:	300 ns (10%-90% RF)	See Typical Characteristics	
6	Control TTL:	Logic "0" = ON Logic "1" =OFF	Pass	
7	Survival Power	+30 dBm (1 Watt)	Pass	
8	Operating Power	+20 dBm Max	Pass	
9	RF Phase Tracking	2 Degree per Degree Celsius	See Typical Characteristics	
10	DC Supply	+5 VDC @ 200 mA Max -12 VDC @ 100 mA Max	+5 VDC @ 140 mA -12 VDC @ 41 mA (See Plot)	PMI QA6

QA/QC Approval: Anthony Hardy PMI QA6

Date: 5/22/26

**SUMMARY TEST DATA
ON
P4T-0R1G20G-100-T-SFF**



SUMMARY TEST DATA ON P4T-0R1G20G-100-T-SFF

