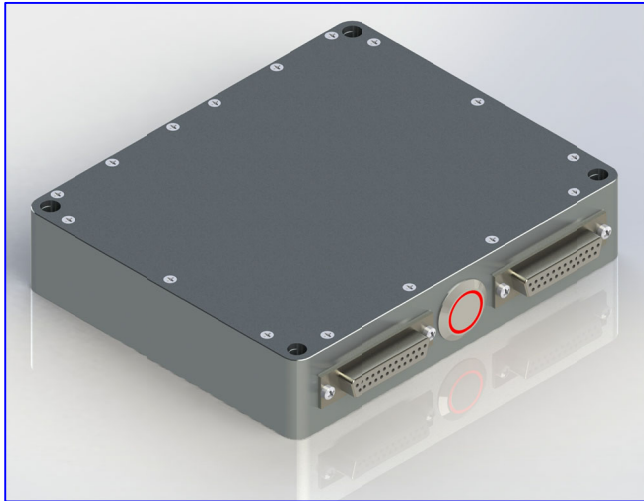


DESCRIPTION

PMI MODEL: PL-ENET-18BIT-0V5V-2X IS A DUAL MICROPROCESSOR MODULE THAT CAN CONTROL ATTACHED DEVICES I/O CONTROL PORT. IT FEATURES TWO ETHERNET PORTS TO COMMUNICATE WITH THE CONTROLLING COMPUTER, AND TWO 25 PIN D-SUB CONNECTORS TO COMMUNICATE WITH THE DESIRED DEVICE. IT FEATURES A RED LED LIT PUSH BUTTON SWITCH TO TOGGLE POWER ON OR OFF.

SPECIFICATIONS

- SWITCH: _____ RED LED LIT PUSH BUTTON
- POWER CONNECTOR: _____ 2.1mm ID X 5.5mm OD DC CONNECTOR
- DIGITAL OUTPUT: _____ 25 PIN D-SUB (FEMALE)
- ETHERNET: _____ RJ-45 (x2)
- IP ADDRESS: _____ FACTORY PRESET
- DC POWER: _____ 6 V @ 1 A
- SIZE: _____ 6" X 5" X 1.25"
- VOLTAGE PROTECTION: _____ ±10 V
- TTL PROTECTION: _____ 1 KΩ
- DIGITAL OUTPUT: _____ 0 TO 5 V (THRU 1 kΩ)
- NUMBER OF BITS: _____ 18 BIT (x2)
- FINISH: _____ NICKEL PLATED



18 BIT OUTPUT LOGIC TABLE FOR J4 & J5

25 PIN CONNECTOR	BIT
1	1
2	2
3	3
4	4
5	5
6	6
7	7
8	8
9	9
10	10
11	11
12	12
13	13
14	14
15	15
16	16
17	17
18	18
19	GND
20	N/C
21	N/C
22	N/C
23	N/C
24	N/C
25	N/C

ENVIRONMENTAL RATINGS

- TEMPERATURE: _____ -20 °C TO +55 °C (OPERATING)

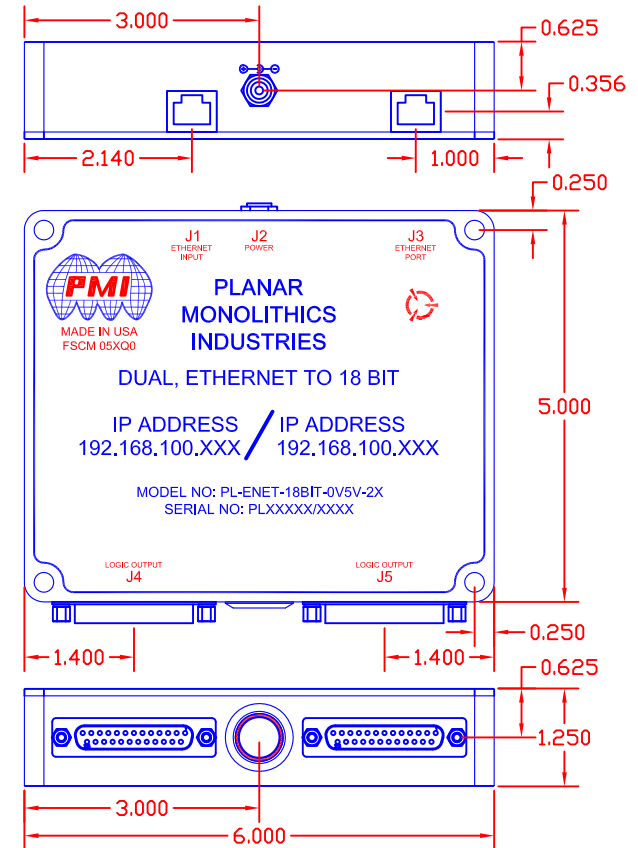
NOTE: THE ABOVE SPECIFICATIONS ARE SUBJECT TO CHANGE OR REVISION

ALL DIMENSIONS ARE IN INCHES
TOLERANCES:
X.XX ±0.020
X.XXX ±0.010

PMI CONFIDENTIAL AND PROPRIETARY

REVISIONS				
ZONE	REV.	DESCRIPTION	DATE	APPROVED
	1	ORIGINAL RELEASE	9/27/2015	
	A1	ECN # 20-0045	9/6/2020	

MECHANICAL OUTLINE



PLANAR MONOLITHICS INDUSTRIES, INC.
7311-F GROVE ROAD
FREDERICK, MARYLAND 21704 USA
TEL: (301)-662-5019, FAX: (301)-662-1731
WEB: www.pmi-rf.com, EMAIL: sales@pmi-rf.com
ISO 9001 CERTIFIED



APPROVALS		DATE	TITLE		
DRAWN		9/27/15	PRODUCT FEATURE PL-ENET-18BIT-0V5V-2X		
CHECKED			SIZE	FSCM NO.	DWG NO.
ISSUED			A	05XQ0	27025224
			SCALE	N:S	SHEET 1 OF 1
					REV. A1